

MORYA FEDERATION

ESOTERIC SCHOOLS OF MEDITATION, STUDY AND SERVICE



Morya Federation Student Webinars

The 7 Ray Energies & Influences Module 3 of 3

“Formulating the Ray Chart”

(This webinar will be available for viewing
by all Morya Federation personnel and the public)

YOUR RAY CHART:

SOUL RAY: (any of the 7 rays) find the “HEART VOCATION”; selfless service that makes the heart sing; creative work you love doing to help people.

Personality Ray: (any of the 7 rays) how you assert your authority, try to control others.

*The lower rays are all subrays of the Personality Ray.
When it is present, it colours the lower rays.*

Mind Ray: (rays 1, 4 or 5). How you think, plan, analyse, build thoughtforms and communicate your thoughts.

Emotional Ray: (rays, 2 or 6). How you express emotions.

Physical-etheric Ray: (rays 3 or 7). Your body type, how you move the body, the daily routines and habits that you most like.

NB. Disciples can have bodies on any ray

The Physical-etheric Ray - 3 or 7

except for disciples who can have any ray

**Your body type, how you move the body,
daily routines and habits that you most like.**



3 Etheric-Physical Body**7 Etheric-Physical Body**

Body type: muscular, stocky, larger boned. Very strong + resilient, can be pushed to endure.

_finer boned, smaller, delicate. Can be strong, but not as resilient as 3, needs a break to recuperate.

Movement: unless there is a higher 7, lacks grace, plods along. Restless, fidgety, freedom loving; dislikes long periods of inactivity. Lives a busy, uncoordinated daily schedule.

_graceful, glides while walking. Happy to be quiet + still. Highly organised, rhythmic daily schedule, therefore an excellent ritualist.

Hands: strong, useful instruments.

_graceful, dance when owner talks

Brain: rapid brain activity, voluble, can babble.

_organises thoughts before speaking, more measured.

Home: can live in a mess, with noise. Can sleep anywhere, any time.

_loves a beautiful, serene home. Ritualised sleep patterns.

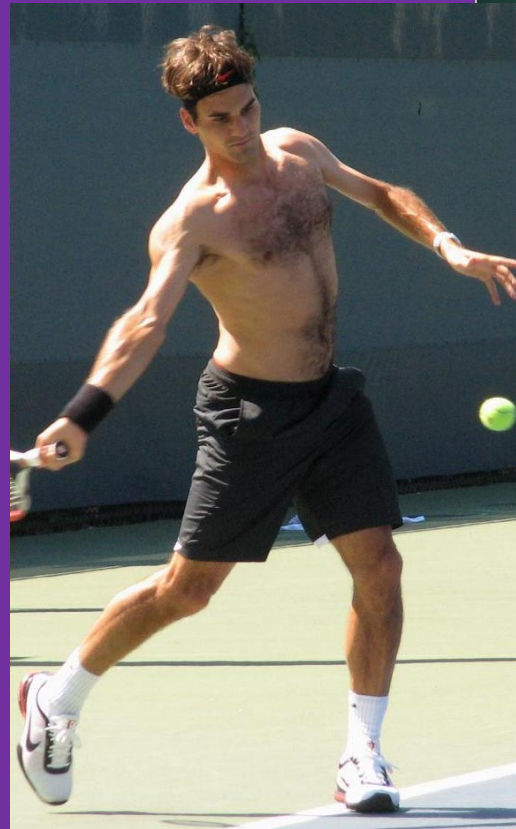
Pain: not especially sensitive to pain

_sensitive to, or the thought of pain

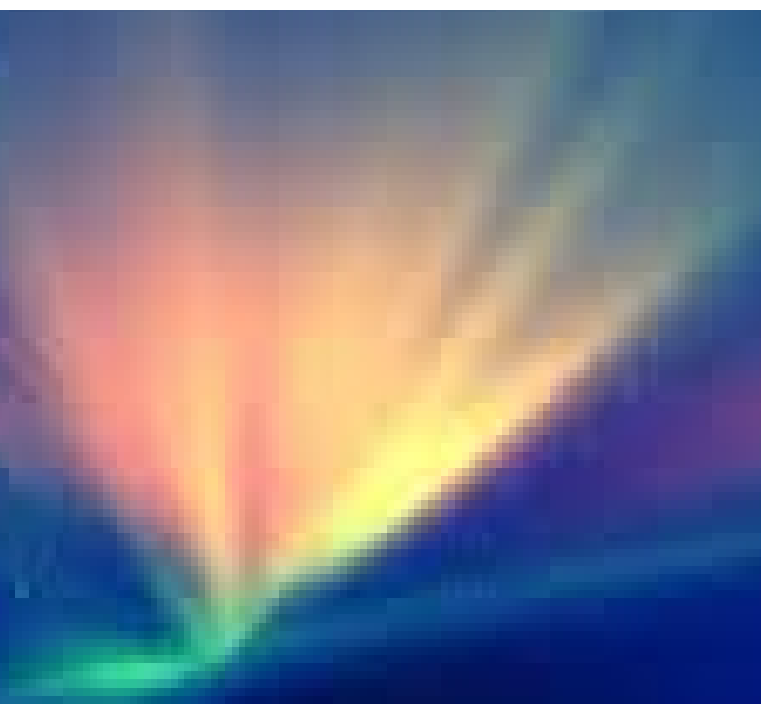
R3: stockier, have more muscle mass. Serena + Rafael rely on strength power and endurance to beat opponents into submission.



R7: finer builds. Roger + Daniela are graceful, have to rely on skill, to pace themselves.



The Emotional Ray – 2 or 6
except for disciples who can have any ray
How you express emotions.



Ray 2 Emotional Field	Ray 6 Emotional Field
<p><i>Emotional force:</i> very sensitive + fearful. Calmer, quieter than 6, easily overwhelmed by circumstances. Curls in if attacked.</p>	<p>_intense, HOT, boils, fiery; very reactive, retaliating if attacked. Lacks emotional control under stress.</p>
<p><i>Loves:</i> a quiet, non-threatening life, luxury + all the good things in life. Attracts partners in.</p>	<p>_fireworks + passion, craves to be loved + adored by the one who is loved. Ardently pursues.</p>
<p><i>Selfish personal love:</i> binds others through manipulation, by playing the victim. Selfish unselfishness.</p>	<p>_burning desire and passion to possess the loved one. All or nothing. "Revenge is sweet"</p>
<p><i>When it wants something others have:</i> uses guilt/ charm to get it; gives it up thru fear of upsetting someone, a doormat.</p>	<p>_it feels intensely JEALOUS, envious, will try to take the cherished object. Fights fate.</p>
<p><i>Higher 2:</i> inclusive + accepting.</p>	<p>_6: inclusive + inspirational.</p>

A 2nd ray emotional response, when it rules the nature

Sorry, I'm in love with someone else

Oh!!

I'm so hurt!

I'll do anything if you'll only come back... no?

I'll do anything. Don't leave me



icclain Images.com

A 6th ray emotional REACTION, when it rules the nature

Sorry, I'm in love with someone else

What did you say??



**How dare you!
I'm so angry! Who is she?**



Jealous!

Jealous!

**If you don't come back
I'll stalk you! I'll kill myself – or you!**

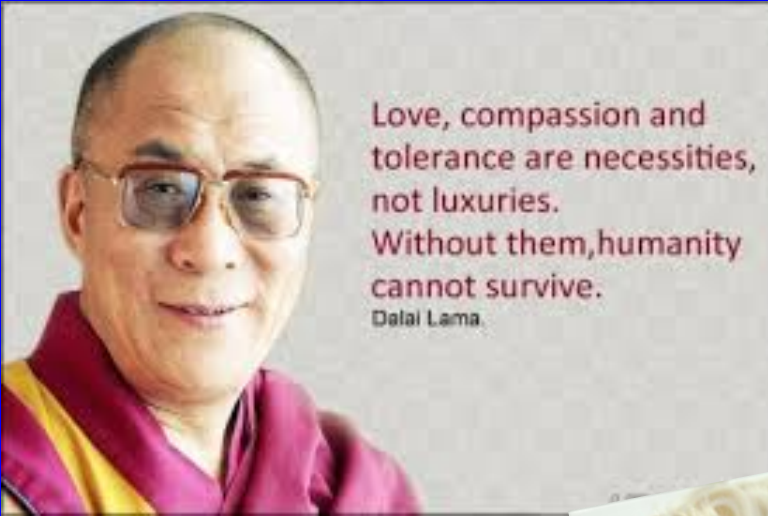


Jealous

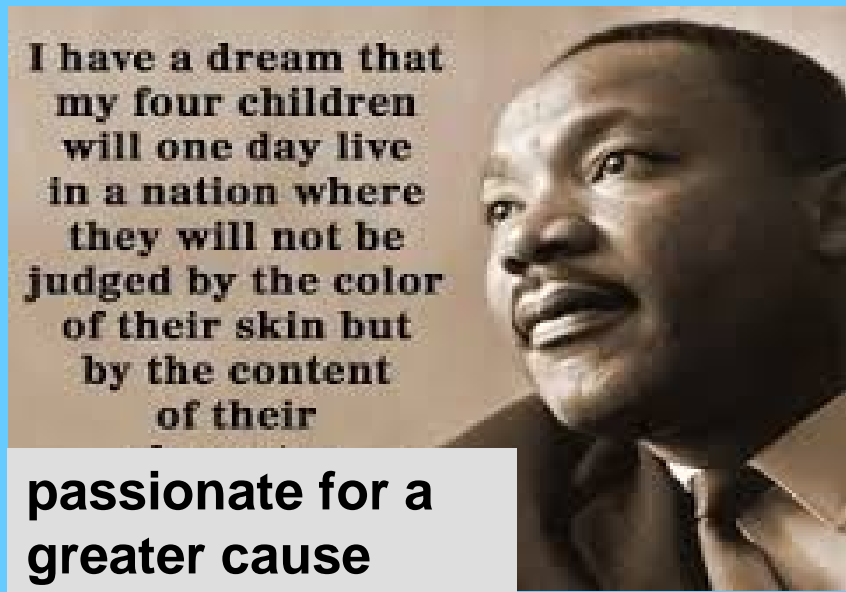
Jealous

**I'll do anything.
Don't leave me**





Love, compassion and tolerance are necessities, not luxuries. Without them, humanity cannot survive.
Dalai Lama



I have a dream that my four children will one day live in a nation where they will not be judged by the color of their skin but by the content of their

passionate for a greater cause

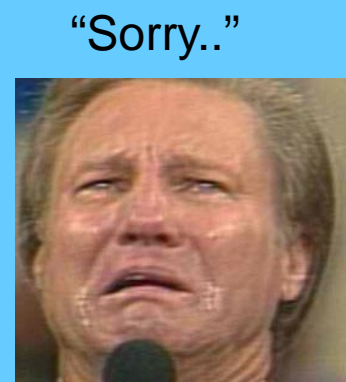


Norma Jean's voice was so very soft and gentle; so warm and full of love + caring

(C Hamlin) "the gentleness in her manner". "the warmth, compassion"



passionate, emotional for a personal cause.

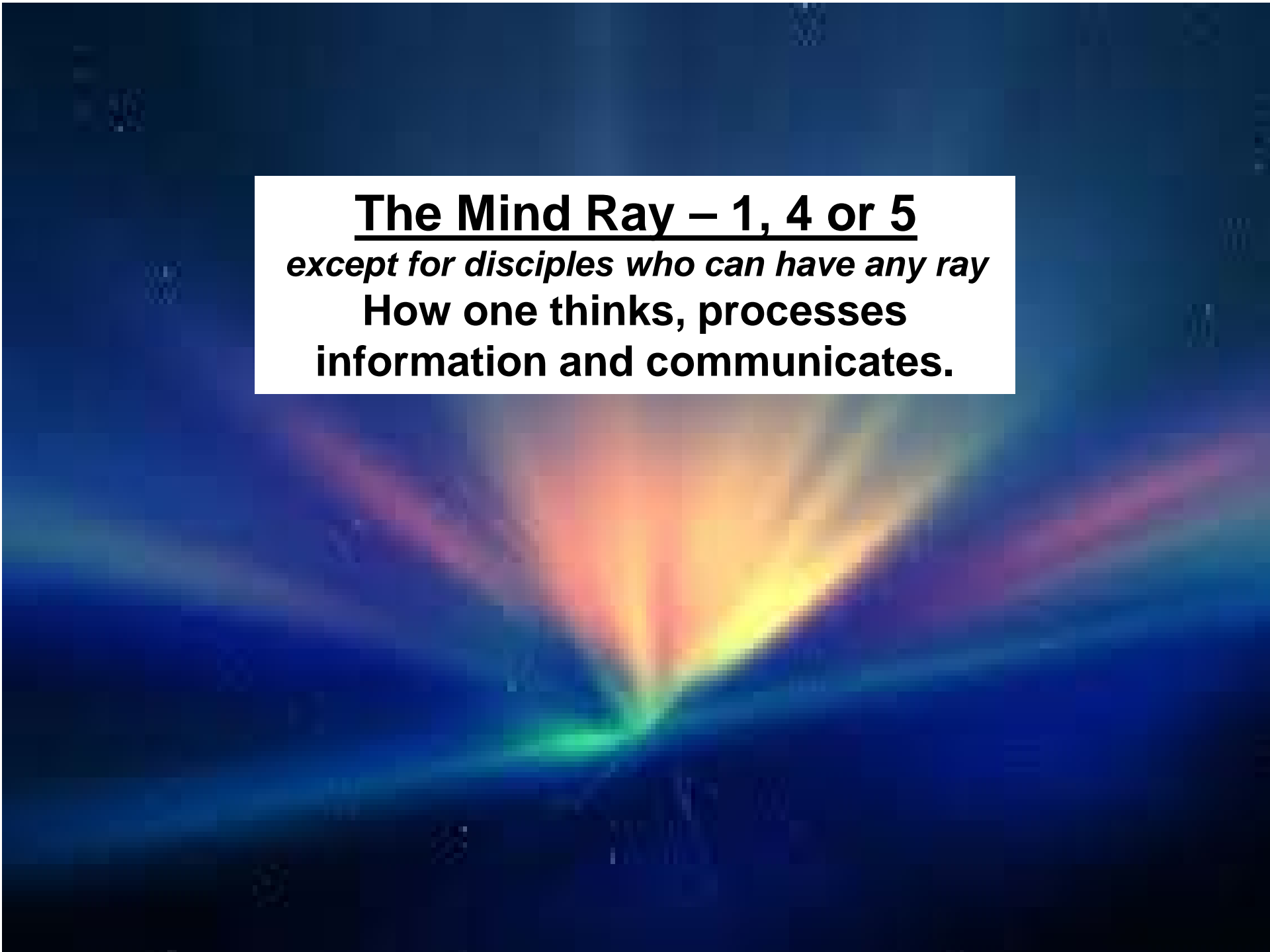


"Sorry.."

The Mind Ray – 1, 4 or 5

except for disciples who can have any ray

**How one thinks, processes
information and communicates.**



1	4	5
The occult mind.	The intuitive mind	The scientific mind
A sensible realistic	Creative, artistic mind.	Interpreting literally
Firm, stubborn mind.	Indecisive mind	Firm with “the facts”
Fast, moves in a straight	Oscillates, weighing	Careful/ deliberate
Goes straight to the point, jumps to	Learns by osmosis	Assembles all the facts and weighs them
Hard edged, sharp thoughts	Exaggeration and dramatic thoughts.	Highly accurate thoughts,
Deals with the larger picture	Fudges details for dramatic effect	Thrives on dealing with detail.
Brief, trenchant in speech. Straight to the	Colourful ideas and speech, uses humour.	Explains the facts in a verbal monotone.
Excellent organising, prioritising mind.	Not well ordered (unless affected by a higher ray)	Very orderly, logical, sequential mind.
Assertive, aggressive, sometimes emotional.	Mind easily overwhelmed when	Hyper-critical, narrow, non-emotional mind.

R1 minds: “Firm, stubborn mind... Goes straight to the point” *“Mrs. Clinton's stubborn insistence that she understands economic hardship”*



R4 minds: “Colourful ideas and speech, uses humour.” *“Billy Connolly learned to use humour to disarm his parents and it ultimately helped him to thrive”*



Tim Berners-Lee



scientist - gave internet to the world

R5 minds: “The scientific mind.. Very orderly, logical, sequential mind.”

Berners-Lee, creator of the WWW. “.. why we need to enable more logical thinking education in schools

**The Personality Ray (if it exists)
can be any of the seven. It is found by
analysing how one asserts authority, how one
controls the environment and others**



Personality Type Groupings

Hard Will-Power line

R1 Will-Power



k5258115 www.fotosearch.com

R7 Ceremony, Order + Magic

These leaders assert authority through:
1) raw power and ruthlessness;
7) thru superb organising and social skills.

Soft Feeling-Emotion line

R2 Love-Wisdom

R4 Harmony through Conflict



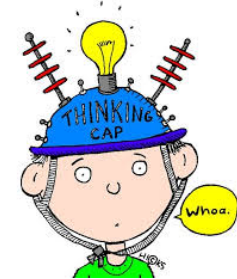
R6 Idealism - Devotion

These feeling/ emotional people assert authority:
2) by being attractive;
4) thru war + drama;
6) by being devotional and preaching narrow ideals.



Hard-mind Intelligence-line

R3 Active-Intelligence



R5 Concrete-Mind + Science

These thinkers assert superiority:
3) by using brilliant + clever manipulation;
5) by using “the facts” to gain advantage, to be right.

Basic Character: "hard power egos" they are forces to be reckoned with. 1 powerful, aggressive, dominating. 7 has rigid attitudes, sets rules, resists change. Both are proud + independent.

_"feeling-emotional" egos with softer exteriors so are more sensitive or reactive, either curling in defensively or outwards on attack. They 'feel' their way thru life, are more intuitive or instinctual.

_"mind egos", mentally developed they try to dominate others + life from the mental plane.

Express authority: by taking the lead 1) thru displays of raw power + ruthlessness, 7) thru superb organising and social skills.

_thru emotional combat or manipulation. 2 charmingly manipulate people, 4 argue + dramatise situations, 6 threaten punishment.

_out-think others. 3 verbal manipulation, 5 uses "the facts" to prove itself right.

Major differences: 1 loud + aggressive, 7 courteous, civil. 1 an isolationist, 7 likes people. 1 doesn't care what other people think, 7 is vain + concerned with appearances.

_2 expands emotionally to include all; 4 oscillates indecisively between war + peace, 6 quickly rejects those different to itself.

_3 mentally versatile, expansive, 5 tight + narrow; 3 is philosophical, 5 technical, scientific.

1-7

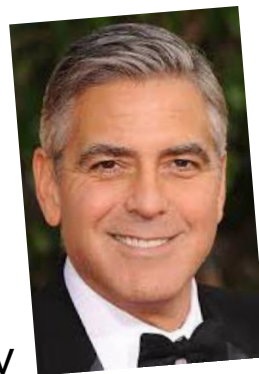


Power 1's assert by bullying (lower type) or asserting (higher type)



7's assert by being highly disciplined & *organised*. (Obama, Kofi Annan)

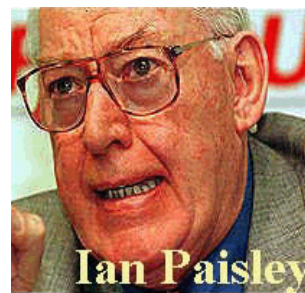
2-4-6



Love 2's assert by oozing charm. (Clinton, Clooney)

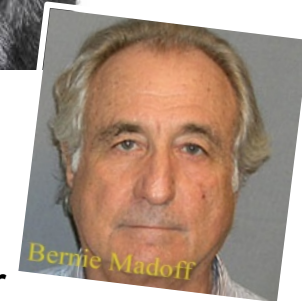
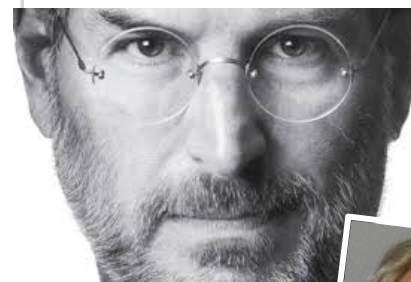


Conflicted 4's down then up *Judy Garland, Sally Field*



6's assert with passion

3-5



3's assert thru mental brilliance or con-artist cunning (*Jobs, Madoff*)

5's assert by using knowledge for personal gain / profit; or to benefit the greater good.



Mengele Berners-Lee 17

The Soul Ray

can be any of the seven, but will only be obvious when soul contact is made. It is most easily found by finding our heart vocation, by reading the contents of the heart – EG: “What makes your heart sing”



The Soul Ray is experienced as surge of:

**1-7 Spiritual
Will-Power**

2-4-6 Love and Wisdom

**3-5 Spiritual
Intelligence**

.. that inspires one's heart to ..

1) Become the One and Only.
7) Achieve perfection in form

2) To love all, attain spiritual omniscience. 4) Create + live in beauty, become beauty. 6) Be loved by one's Beloved; express one's highest ideals.

3) Plan along with God + manifest his plan. 5) To know the truth & reveal life's mysteries.

.. and instils a deep yearning to become ..

A leader: 1) who is powerful, benevolent, 7) highly organised, efficient, manifesting projects skillfully.

2) A healer, teacher.
4) A counselor, mediator, artist, warrior, peace-maker.
6) A worker in religion, care/ service industries.


3) Thinker, teacher, philosopher, philanthropist, cosmologist.
5) Scientist, researcher, worker in technology.

.. and help people move forward / be free by ..

1) freeing them from oppression,
7) helping them to bring their lives into divine order.

2) comforting the suffering;
giving them the wisdom they need to move forward.
4) resolving conflict,
beautifying their lives.
6) inspiring people to follow their highest ideals/ truth/ God.

3) stimulating their minds/ mental creativity.
5) discovering new truths/ technology that will lighten man's load.



Summary and Final Questions