

MORYA FEDERATION

ESOTERIC SCHOOLS OF MEDITATION, STUDY AND SERVICE



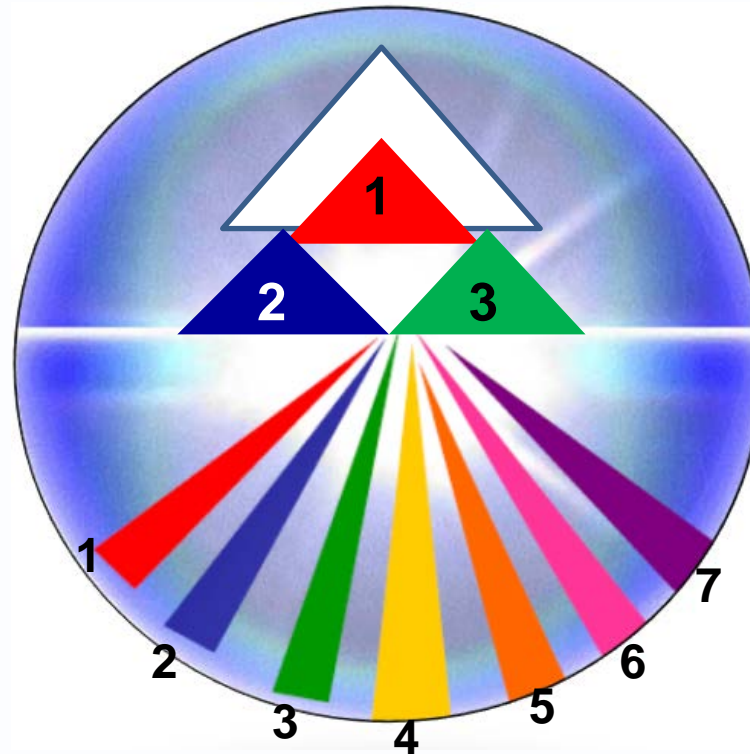
Morya Federation Student Webinars

The 7 Ray Energies & Influences, Module 1 of 3

(This webinar will be available for viewing
by all Morya Federation personnel and the public)

The birth of a new universe is managed by 3 Logoi (“Gods) representing the 3 divine aspects Spirit, Soul, Body.

Under these 3 work the Seven Ray Lords.



The universe “opens” when the 7 ray energies “burst” out. They build the forms that contain or house spirit, and give quality and colour to everything in the universe – on all levels.

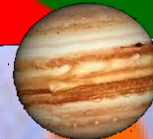
The 7 Rays working in our system originate
from 7 Stars in the Great Bear (Esoteric Astrology p85)



they flow through
the Constellations – Zodiac Signs



into our Solar System



to Earth
and to us



RAY GROUPS

SPIRIT

Power rays
"Hard line"

1 Will-Power

7 Ceremony,
Order, Magic

SOUL

Feeling-Emotional
"Soft" Rays

2 Love-Wisdom

4 Harmony thru Conflict

6 Idealism-Devotion

INTELLIGENCE

Thinking rays
"Hard line"

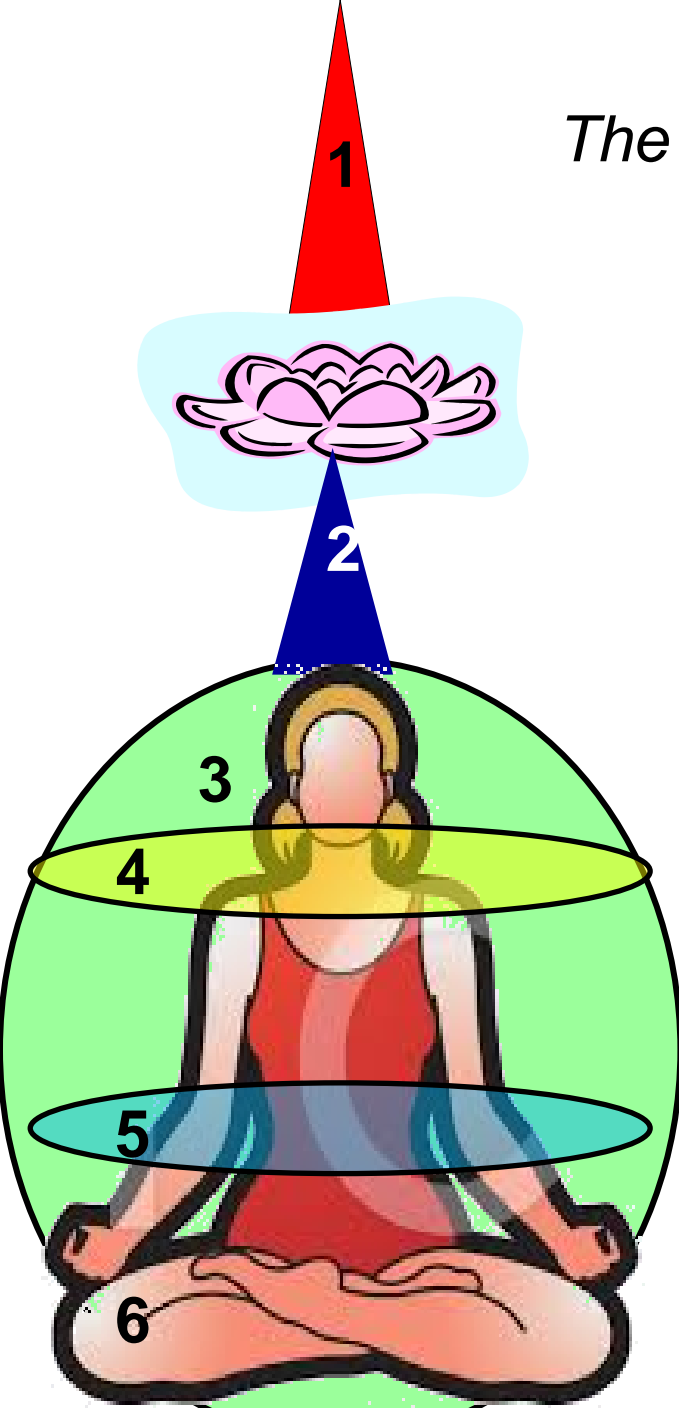
3 Intelligent-Activity

5 Concrete
Mind/ Science



OUR RAYS

The energy make-up of a person consists of:



1. Monadic Ray – but, beyond discovery until the 3rd Initiation has been taken.

2. Soul Ray – source of Love and Wisdom

3. Personality Ray– appears late, when mind-emotions-physical integrate into a dominant, intelligent ,“personality”.

4. Mind Ray– how we think.

5. Emotional Ray - emotional expression.

6. Physical Ray – body type, daily habits and routines.

- 1. Observe the rays in nature, in the world, in others.**
- 2. Identify your own rays, by observing how you express on each level. Start from the outside and work in.**
 - a. Physical-etheric Ray: rays 3 or 7**
 - b. Emotional Ray: rays, 2 or 6**
 - c. Mind Ray: rays 1, 4 or 5**
 - d. Personality Ray: can be any of the seven rays**
 - e. SOUL RAY: can be any of the seven rays**
 - (1) Disciples can have bodies on any ray**
 - (2) The Soul Ray is different to the Personality Ray**
- 3. The great benefit of analysing your personal rays: it trains the mind to detach from its automatic identification with your personality habits and expressions, and become an observer. The more you can do this, the more you identify with your spiritual nature.**

The SOFT LINE RAYS

Intuitive, Feeling, Emotional Rays

2

4

6

THE “SOFT” LINE

THE 2ND RAY OF LOVE-WISDOM

The Energy of “ATTRACTION”

Ray 2 Love-Wisdom

(Softens: gives kindness, sensitivity, charm, inclusiveness)

2a. LOVE

(heart emphasis)

Power to heal,
save, redeem



2b. WISDOM

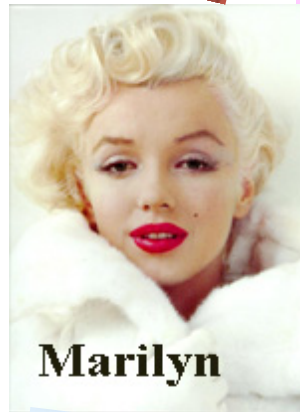
Power to teach, illumine.

Love of pure truth.



2a. (love types) Power to heal, save, redeem

2b. (wisdom) Power to teach, illumine. Love of pure truth.



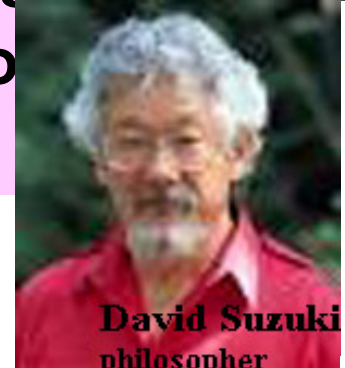
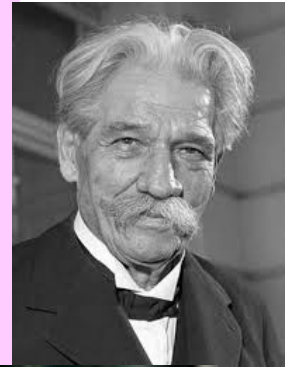
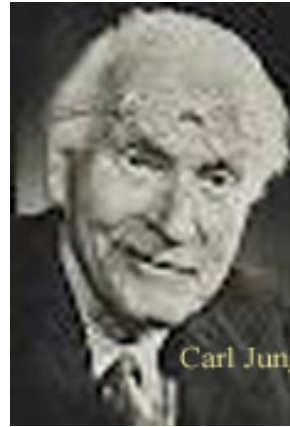
DL, Diana, Bill C, Marilyn, Catherine Hamlin, B Spears



**Selfish R2 traits:
Too - attached,
non-assertive,
self-pitying
love of comfort.**

**2a. Too - fearful,
hypersensitive,
impressionable.**

**2b. Over-absorbed
in study, scorns
mental limitation
in others**



Jung,
Schweitzer,
Suzuki

**Influences: Soul,
Personality, emotions**

THE 4th RAY OF HARMONY THROUGH CONFLICT

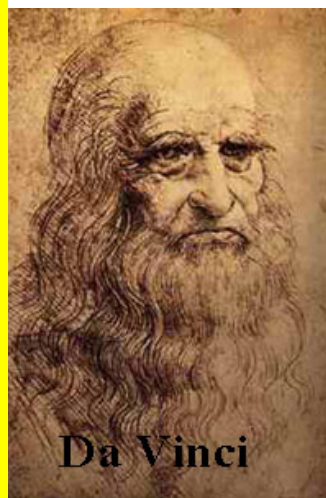
a reflection of the 2nd Ray

Ray 4 “feeling” energy of Harmony *thru* **Conflict**

Emotional < > intuitive mind, warrior-ship, “grows” thru constant agonising, crises, struggle. Bridging-reconciling tendencies, love of beauty/ drama/ art/ entertaining/ creating.



Warrior-ship, agonising, emotionalism, love of beauty, artistry



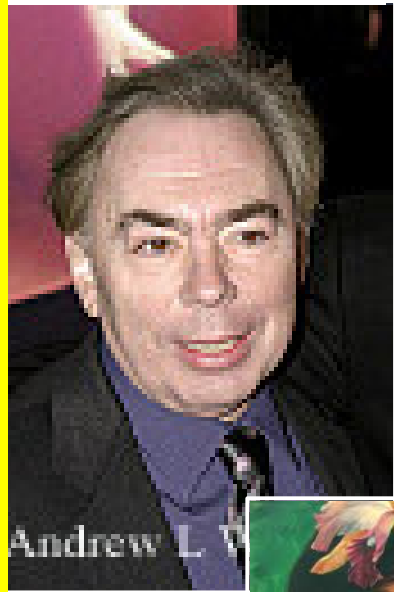
Da Vinci



Da Vinci,
Michaelangelo,
Sally Field,
Webber, Billy
Connolly,
Frieda Kahlo,
Billie Holliday,
Judy Garland



Negative R4 traits:
Emotionalism,
constant inner-outer
conflict, unregulated
passions, fights for
sake of fighting,
indecisive, confused
combativeness,
exaggeration,
procrastination.



Andrew L. W.



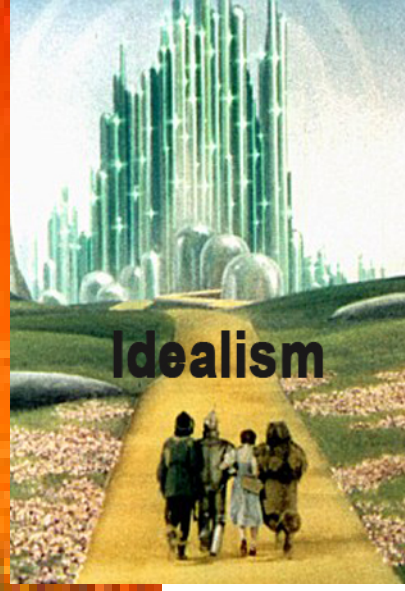
Influences: Soul,
Personality, Mind

THE 6TH RAY OF DEVOTION AND IDEALISM

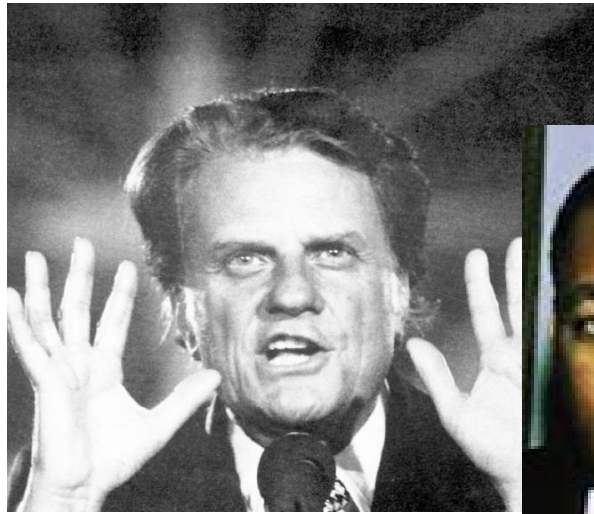
a reflection of the 2nd Ray

Ray 6 emotional energy – Devotion & Idealism

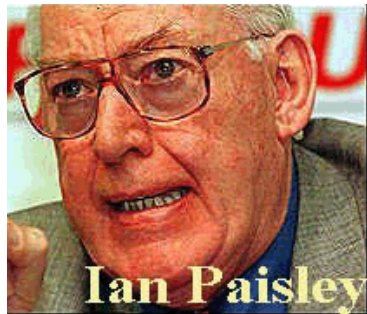
Intense emotions-feelings, self-sacrificial ardour, loyal, faithful, pure, good, self-sacrificing, earnest, sincere.



Intense emotions-feelings, self-sacrificial ardour, loyal, faithful, pure, good, self-sacrificing, earnest, sincere.




Negative R6 traits:
Selfish and jealous love, blind faith, gullible, rigid devotion/idealism. glamoured, self-abusing, fiery anger, fanatical, a victim/ martyr, susceptible to Mob behaviour, cruel.



Jesus, Billy G, MLKing, Osteen
Jane Fonda, Paisley, Swaggart

Influences: Soul, Personality, emotions



Summary and Final Questions