

Morya Webinar 12

The Divine Feminine

**Awakening the Higher Mind and Intuition
through the use of Symbols**



Goals

- One of our immediate goals is to see any esoteric truths emerging through the mainstream. (Our responsibility to Bridge)
- One of our long-term goals is to invoke the Divine Will side of our nature. (N)
- Why are the posting on Facebook often so mental.
- Show of hands how many were able to see this video
- DINA books practical outlines balance.

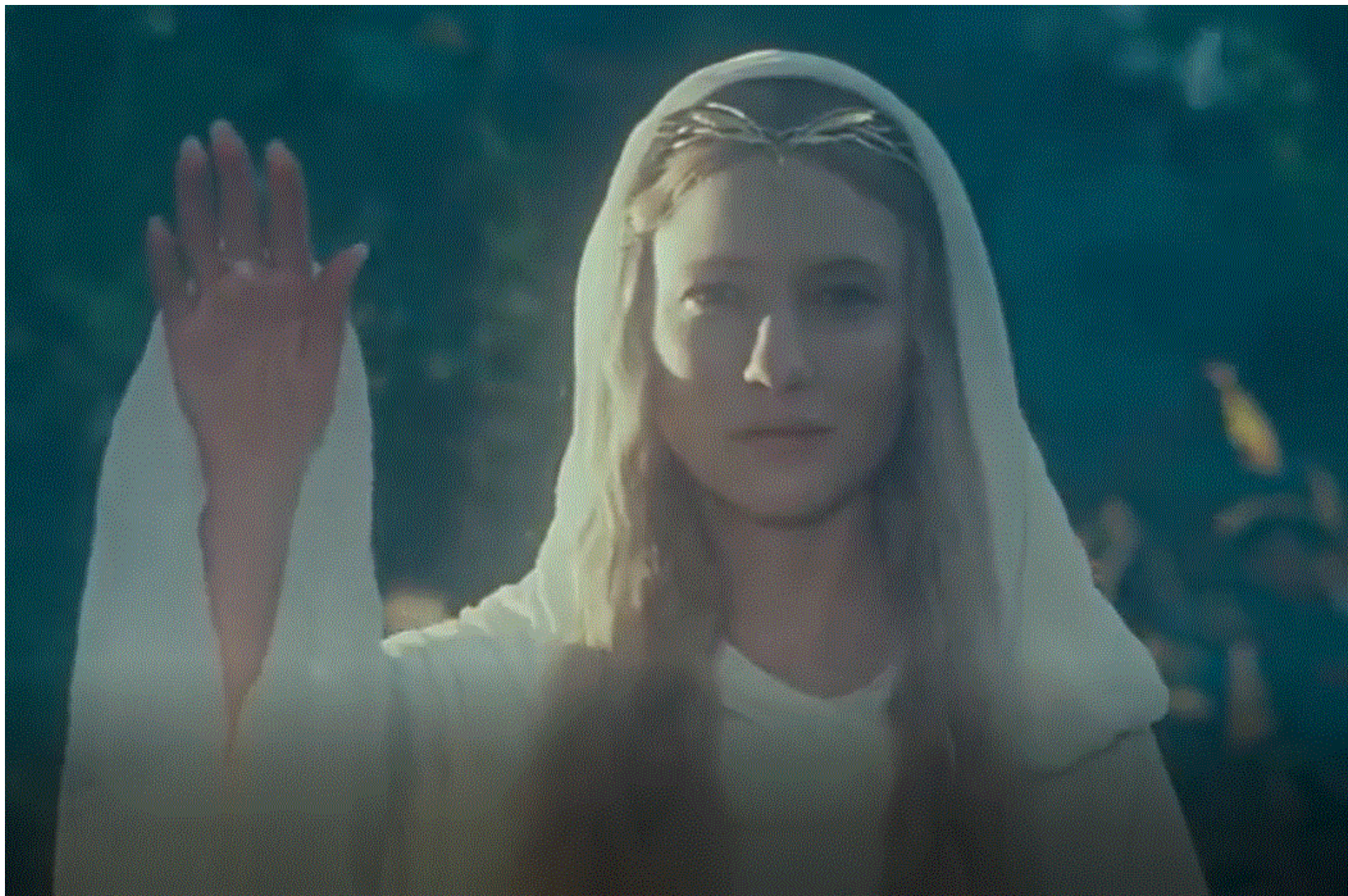
Lord of the Rings Trilogy

Violence - Lower Magic Modified

- **Story around a ring of power to rule middle Earth.**
- **Parallels between lower elemental forces and our higher solar angels.**
- **New feminine energies emerging.**
- **Fodo Baggins and his companions are not highly intelligent but have a simple devotion to doing good.**

Enya

- May it be an evening star shine down upon you.
- May it be when darkness falls,
- your heart will be true
- You will walk a lonely road.
- Oh! How far you are from home.
- Darkness has come,
- believe and you will find your way. (ENYA)







*Thus, amidst the raging fire one can see a thin sword above
the forehead of the warrior spirit.*

(Heart, p- 101 by Master Morya)

C D Carpenter



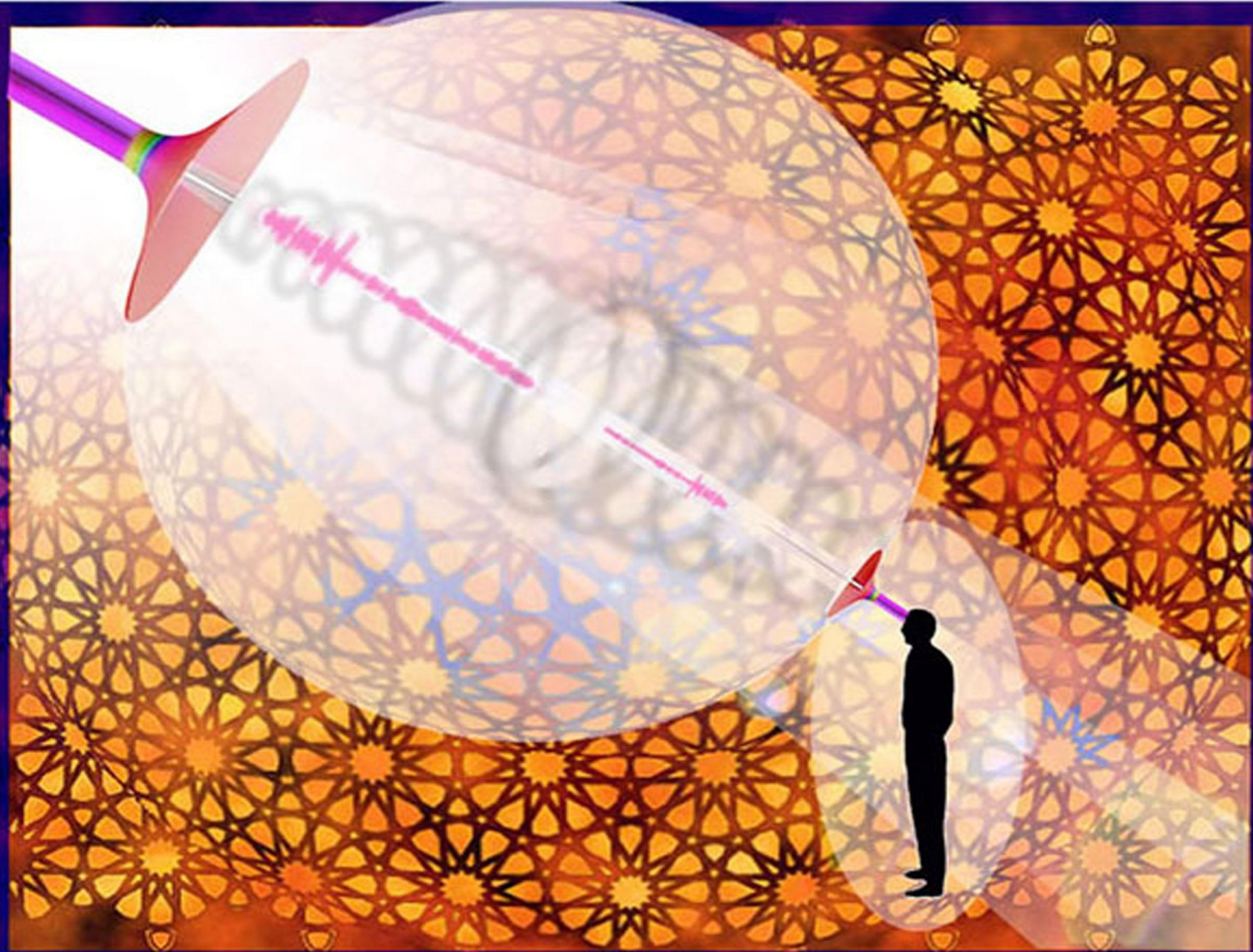
Where Fire and Water meet !

Astral Stability.

- “The student of magic aims, above all, to purify his desires, and so to transmute his emotions..... Every magician has to learn the fact that, in this solar system, during the cycle of humanity, the astral body is the pivotal point of endeavour, having a reflex effect on both the other sheaths, the physical and the mental. He, therefore, aims at transmuting (as has often been said) lower desire into aspiration; at changing the lower cruder colors which distinguish the astral body of average man, for the clearer, purer tones of the spiritual man, and of transforming its normal chaotic vibration, and the "stormy sea of life," for the steady rhythmic response to that which is highest and the centre of peace. These things he effects by constant watchfulness, unremitting control, and steady meditation.” (TCF 996)

How a vortex is established

- Old Commentary phrases as follows:
- "Those who are demanding to be saved have cried aloud. Their voices penetrate into the formless world and there evoke response.
- "Those who in distant aeons have pledged themselves to save and serve respond. Their cry too rings forth and, ringing, penetrates into the dark and distant places within the worlds of form.
- "And thus a vortex is established and kept alive by that constant dual sound. And then a touch is made and for a space and during time, the two are one—the Saving Souls and the Units to be served.
- "Slowly the vision of the Saving One becomes a light which guides the Crying Ones into the place of light."
- (EA 327)



Will and Desire

-
- **Rule 10**
- “One of the fundamental concepts which is grasped by all magical workers, is that both will and desire are force emanations. They differ in quality and vibration, but are essentially currents of energy, one forming an initial vortex or centre of activity, being centrifugal, and the other being centripetal, and the main factor in the accretion of matter into a form around the central vortex....
- The analogy in all form building holds good for gods, men and atoms. The solar system is (from the higher cosmic planes), seen as a vast blue lotus, and so on down the scale; even the tiny atom of substance can be so considered....
- (TCF 1018-19)

Monad

Atma

Under the direction of the Spiritual Will
alignments made from bridges of
devic color and sound.

Ray chart
after the 3rd initiation.

Buddhi

Monad

3

Manas

Soul fades out as intermediary
at the 3rd initiation.

Astral
Ray

4

2

Personality

5

L-Mind
Ray

Physical-etheric

Ray

Three lower rays of the
personality in direct alignment
or contact with the upper triad.

3rd Ray Monad
2nd Ray Personality







CROWN CENTER SYNTHESIZING 7 LESSER HEAD CENTERS

MONAD

1000

HEAD
RAY 2 7

EGOIC LOTUS
12 PETAL ED HEART
CENTER IN HEAD

ALTA MAJOR
Synthesizing 4 lower
personality centers

ALTA
MAJOR
RAY 3 6⁰

96
AJNA
RAY 5 3⁰
RAY 4

16
THROAT
RAY 3 6⁰

12
HEART
RAY 4 4⁰

6
SACRAL
RAY 7 1⁰

Diaphragm
10
SOLAR
PLEXUS
RAY 6 2⁰

⁰ Refers to the number
of initiation.

Major triangles to
the 5th Initiation.

1
4
7



BASE OF SPINE
RAY 1 5

Modified and adapted
from TCF page 169-170

C Duane Carpenter

“The star will shine forth”

Future astrology and a new branch of psychology

- Astrologers will eventually find it necessary to cast three horoscopes. 1. Physical.... 2. Emotional.... 3. Mental....
- It will be found that these three charts will take certain geometrical lines, the lines of energies will form patterns. These three charts, superimposed one upon the other, will give the personality diagram, the individual life pattern. Amazing symbolic charts and lineal forms will be found to emerge when this is done, and the "geometry of the individual" will grow out of this, for it will be found that each line will function in relation to another line, and the trends of the life energies will become apparent. Eventually, even in this department of knowledge, "the star will shine forth." This will constitute a new branch of psychology and its true exponent for our age will duly be found. I but indicate the lines of the future astrology in order to safeguard the present. (TWM 440-41)



XEN

@XenAligning