

23

"Blaze of Refulgent Glory"

Awakening
the Higher Mind
and the Intuition

The Vortex
Triangles
The Centers



999

New and experimental methods must be employed.

Almost a century ago the Master DK via AAB made this important statement about future teachings that would take place after the turn of this last century.

"People are apt to forget that with each forward advance of humanity, the demands upon the Hierarchy change, new needs must be met, new techniques used, new and experimental methods must be employed. As I write for disciples and initiates, I call this to their attention" (R&I V p. 246)

Awakening the Higher Mind and the Intuition



- 1. Opening Fire Meditation
- 2. Recent Solar and Moon Eclipse and Solar Cycles
- 3. AI and Augmented Reality
- 4. Closing Meditation, 4th Formula for Group Integration.

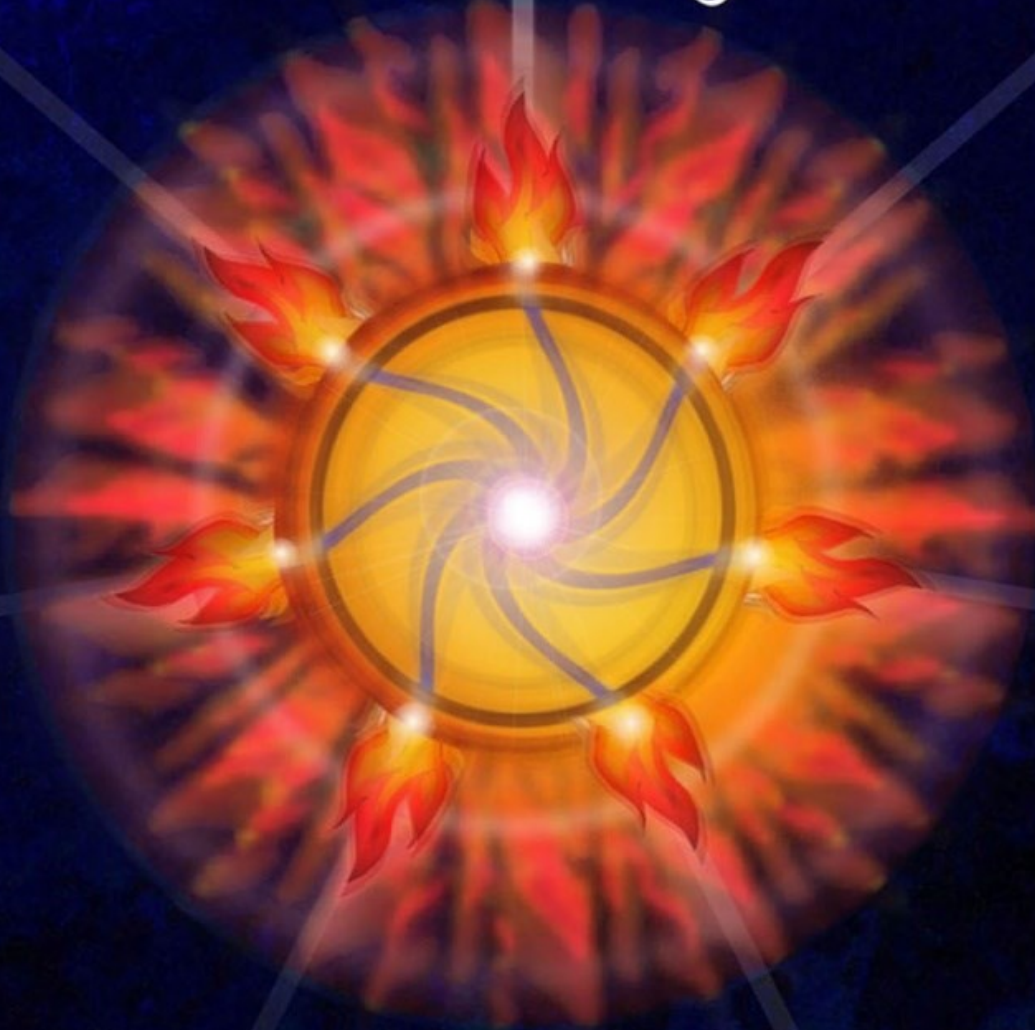
Fire Mantra

“The wheel of living fire which burns not but ever heals.”

“I would ask you—as far as you possibly can—to insulate yourself from fear and from the effect of the world situation and its allied problems. The future for you is planned and you can take the right steps through the power of your illumined mind. I would ask you to carry forward this insulation along the line of love, using the ancient method which has been called "the wheel of living fire which burns not but ever heals." This method is occult and safe and constitutes no barrier to relationships as does the building of a separative wall. The method is as follows:

See before you a wheel of fire with seven spokes. See it immediately before your eyes. Then, by an act of the creative imagination, see yourself standing in the centre at the hub of the wheel; there regard yourself as if you were that hub. From that central position, send out the seven streams of living love, radiating upon the world. When you do this you serve and are, at the same time, completely protected. This exercise can be come instantaneous and effective. It generates a protective force and at the same time makes you a living centre of light and love.” (DINA 1 157

The Wheel of Living Fire...



...which burns not but ever heals.

(Alice A Bailey Discipleship in the New Age Vol.1 p.157)

The Way of Fire

"I seek the Way; I yearn to know. Visions I see, and fleeting deep impressions. Behind the Portal, on the other side, lies that which I call home, for the circle hath been well-nigh trod, and the end approacheth the beginning.

I seek the Way. All ways my feet have trod. The Way of Fire calls me with fierce appeal. Naught in me seeks the way of peace; naught in me yearns for earth.

Let the fire rage, the flames devour; let all the dross be burnt;

and let me enter through that Gate, and tread the Way of Fire." (LOS, 209)

The Fires of Purification





The Fires of Purification

2. Eclipse of the Moon and of the Sun

"I have already indicated to you the form that the religion [universal spirituality] of the new age will take. It will be built around the periods of the Full Moon, wherein certain great Approaches will be made to the world of reality, also around two periods of massed Approaches to be made at the time of the major eclipse of the moon and of the sun during the year." (The Externalization of the Hierarchy, Alice A. Bailey. p.55.)

THE TRANSMUTATION OF LIFE INTO LOVE.

New Moon solar eclipse in Aries

[Bonnie Orgren](#) Duane, Thank you. I just wrote this comment to post -"Monday there was a New Moon solar eclipse in Aries. I'm still recovering energetically from the brief solar outage. The Sabian symbol for the the lunation at 20 degrees of Aries was according to Dane Rudhyar " A young girl feeding birds in winter"-overcoming crisis through compassion. He enlarges on this image by writing additionally that " man can maintain the life of the spirit [symbolized by birds] steady through all crisis if, like a " young girl", he is widely open to the promptings of love and sympathy...Live potency in nature spirits reaches a higher level in the human being" The theme is THE TRANSMUTATION OF LIFE INTO LOVE.

There is so much division, conflict and pain currently arising in the world, needing to be transmuted as we enter into a new era. Many feel discouraged and impotent in the face of obstacles and the resulting feelings of isolation. The rarity of this solar eclipse, its length and visibility drew millions of citizens together to view it and share the experience. Collectively we were united in our appreciation of our solar lights and the cosmos, stimulating love for our small planet and place in the universe. I viewed the eclipse from my patio and also on TV as one channel was following its path. I am glad that I was able via TV to witness the multitude of people who had gathered and also traveled to view it. Most, including the national commentators, were emotionally affected, in awe and moved to tears with a seeming new realization of their position on Earth and in the universe. It was a major initiatory experience for the citizens of the U.S. and will leave a potent legacy.

SOLAR CYCLES

Certain waves of energy impinging upon our Solar System

- **“The science of the soul in its various aspects (mental, psychical, and spiritual) is making much headway now in the world, and is absorbing more and more the attention of thinkers. This is the result of certain waves of energy impinging upon our solar system and thus eventually finding their way to our planet.”**

2025 and the impact of Divine Will

- The science of the soul in its various aspects (mental, psychical, and spiritual) is making much headway now in the world, and is absorbing more and more the attention of thinkers. This is the result of certain waves of energy impinging upon our solar system and thus eventually finding their way to our planet. (Treatise in Cosmic Fire, P. 1256)
- The four the most important star systems, or constellations, filtering through our own Solar Logos at this time and given by DK that have a direct influence on our planetary life and all the kingdoms of nature at this time are:
 - **Ray 1. Great Bear (Ursa Major)**
 - **Ray 2. Sirius**
 - **Ray 3. Pleiades**
 - **Ray 7. Draco**
- DK further states:
 - “To these would be added other streams of energy which definitely play upon and affect our planetary life, such as those coming from that great star, **Betelgeuse**, or from **Antares** and other stupendous suns and solar systems... (EP 2 15-16)
- Although all these cosmic influences distribute different ray qualities, they all, in their higher expressions, embody some aspect of Divine Will, or what DK has also designated as “the Principal of Directed Purpose.” A principal that working through the 7th ray at this time historically synthesizes all of the 7 ray qualities into something totally new and unknown into our solar system as well as our lesser planetary and human systems.

Cosmic Rays Flowing directly into our Planetary System

- **Early theories about solar activity indicated that plasma streaming in from higher cosmic sources never affected our planet earth extensively, because when impacting the sun these powerful cosmic radiations became deflected at the poles because of the vast plasma shields that surround the sun.**
- **New research indicates that this is not entirely accurate. It is now believed that Cosmic Rays flowing into the sun can also become pinched at the suns equator and therefore shoots cosmic rays directly out and in line with all of the planets in our solar system.**

The Science of Astrology which is ancient, and the Science of Electricity which is new.

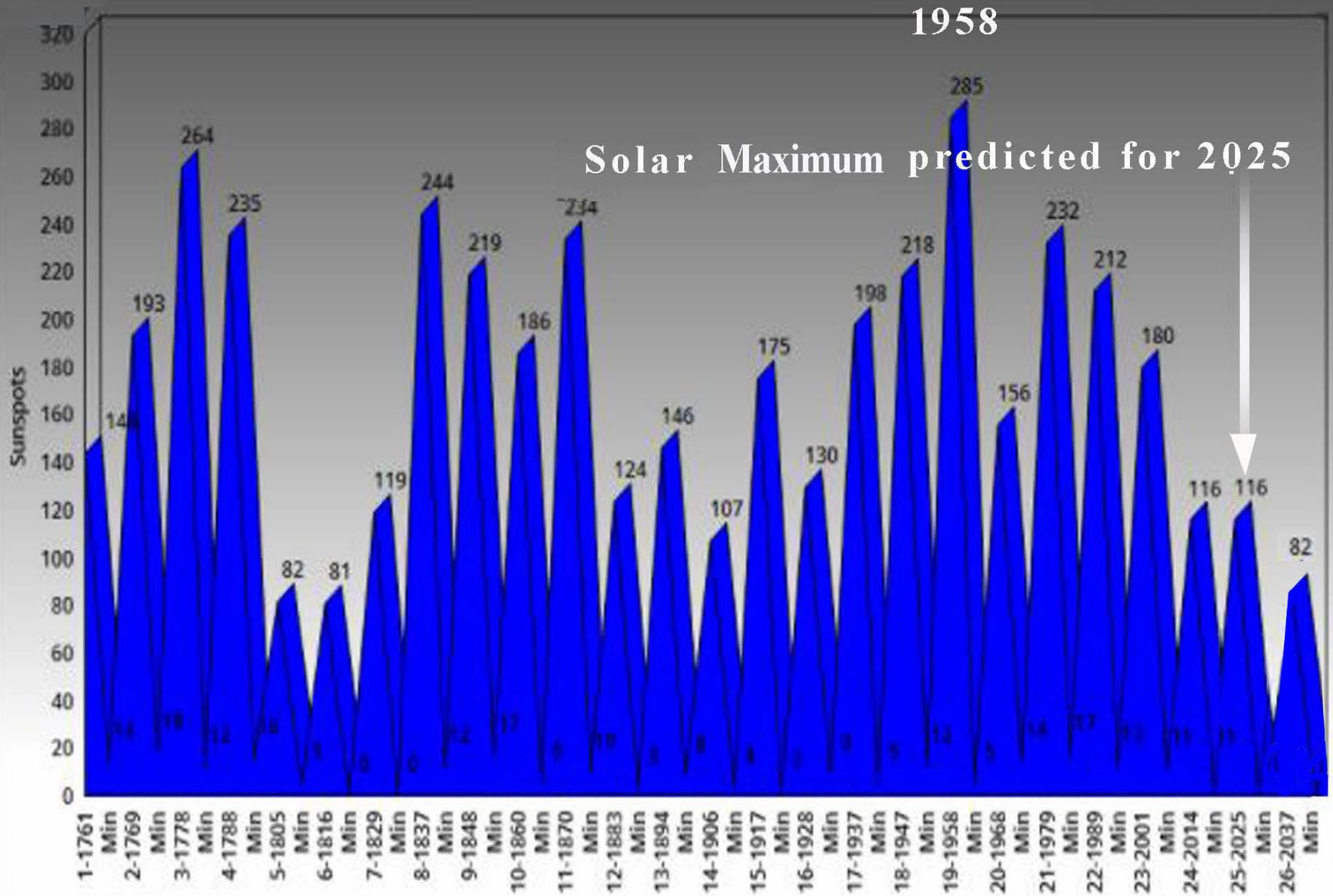
- **All Suns have an active electric and magnetic plasma shield that insulates them from powerful Cosmic Rays, this is particularly true during solar maximums where these powerful cosmic forces are deflected.**
- **When the Sun is in a solar minimum Cosmic rays can pass around or through this weakened protective plasma shield, and directly impact the planets in our Solar System. When impacting the earth this in turn effects will effect all life in the different kingdoms.**
- **We stand on the threshold of a new Super-Human Physics that will be based on two sciences, the science of Astrology which is ancient, and the Science of electricity, which is relatively new. In the merging of these two sciences many deep and profound insights into the universe and our place within it.**

**We are in a cycle of a solar maximum,
that is within an even greater cycle of
solar minimums.**

“Grand solar minima occur when several solar cycles exhibit lesser than average activity for decades or centuries. Solar cycles still occur during these grand solar minimum periods but are at a much lower intensity than usual. The grand minima form a special mode of the solar dynamo operation.”

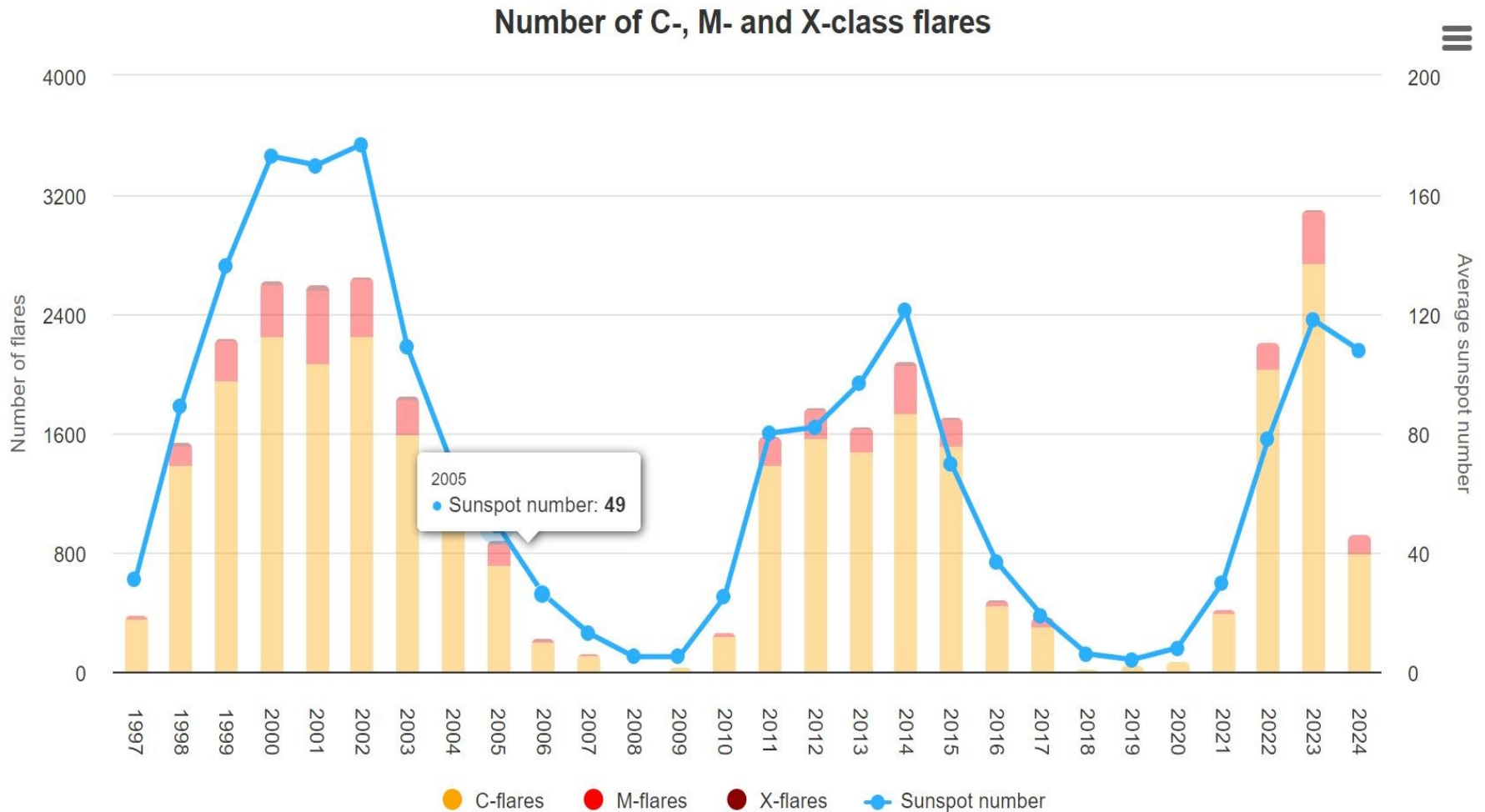
(Wikipedia)

Solar Maximum cycle found within a greater Solar Minimum cycle



Number of C, M and X-class solar flares per year

The graph below shows us the number of C, M and X-class solar flares that occur for any given year. It gives us a nice idea of the amount of solar flares in relation to the sunspot number. It is thus another way of seeing how a solar cycle evolved over time. This data comes from the NOAA SWPC and is updated daily.



2025, below the average number of sunspots

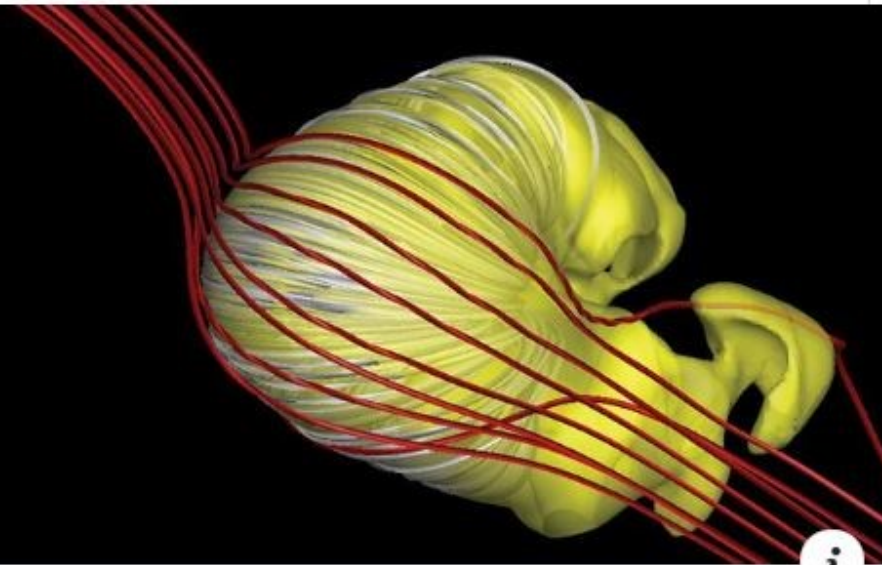
- April 2023 According to [NOAA/NASA and international experts](#): “Cycle 25 will be similar in size to Cycle 24. Solar Cycle 25 may have a slow start, but is anticipated to peak with solar maximum occurring between 2023 and 2026, and a sunspot range of 95 to 130. This is well below the average number of sunspots, which typically range from 140 to 220 sunspots per solar cycle.”



Escaped Serf

1h · 🌐

Scientists have developed a new prediction of the shape of the bubble surrounding our solar system using a model developed with data from NASA missions. The shape of the heliosphere is more than a question of academic curiosity: The heliosphere acts our solar system's shield against the rest of the galaxy. Energetic events in other star systems, like supernova, can accelerate particles to nearly the speed of light. These particles rocket out in all directions, including into our solar system. But the heliosphere acts as a shield: It absorbs about three-quarters of these tremendously energetic particles, called galactic cosmic rays, that would make their way into our solar system. Those that do make it through can wreak havoc.



NASA.GOV

Uncovering Our Solar System's Shape

Scientists have developed a new prediction of the shape of the bub...

Cosmic Rays can effect our DNA

- (Condensed from a commentary by Anna Sclar)
- Cosmic rays are very high frequency light waves that have been shown to potentially transform human DNA – thus affecting human evolution.
- In fact, an analyses of ice samples taken from polar stations of Greenland and Antarctica have shown that some 12,000 years ago and 34,000 years ago, there was an incredible increase in cosmic rays. Scientists were surprised to find that both times corresponding to periods of great leaps in human evolution in terms of art and technology.
- The effect on cosmic rays on our own genetics can lead to mutations in the body, the mind, and in the brain, and could also alter our perceptions of reality. Cosmic rays are passing through the earth and our body all the time, due to environmental processes of the cosmos and solar minimums.

Celestials Triggers

and the shift in Human Consciousness

- **The effect on cosmic rays on our own genetics can lead to mutations in the body, the mind, and in the brain, and could also alter our perceptions of reality. Cosmic rays are passing through the earth and our body all the time, due to environmental processes of the cosmos and solar minimums.**
- **In 1987 A supernova occurred close enough to earth that it was so powerful that it was visible to the naked eye.**
- **A supernova is a rare stellar explosion so powerful that its radiation can briefly outshine an entire galaxy, releasing as much energy in a flash, as the sun is expected to emit in its lifetime.**
- **A shift in human consciousness is occurring, employing celestial triggers such as supernova and the earths alignment with the galactic Center, as well as other star systems and constellations which we have earlier outlined.**

The Triple effect of Solar Minimums.

- **1. It stimulates the involutory substance inherent in man's three lower bodies to rise to the surface that demands recognition and eventually transmutation.**
- **2. It stimulates bacteria, viruses and pathogens inherent in the earth to be draw to the surface that have hitherto lain dormant. (Covid 19)**

Augmented and Virtual Reality

Virtual Reality

The computer-generated simulation of a **three-dimensional** image or environment that can be **interacted** with in a seemingly real or physical way by a person using special electronic equipment, such as a helmet with a screen inside or gloves fitted with sensors.

The Meta Quest 2, formerly known as the Oculus Quest 2, is a virtual reality (VR) headset that allows users to interact with the virtual world.



Glamor, or a new tool for spiritual transformation

Is this just another entertainment devices or is this a tool that could potentially be used, with the right interior concentration, and the right spiritual orientation, help the student contact the etheric and astral planes?

For the second ray types, whatever is first seen or visualized on the physical plane, can more easily be later transferred up onto the high mental plane where real white magic is performed.



Manipulate reality with SORA

No doubt AI programs like SORA will be used to sell all sorts of consumer products and used in the entertainment industry, but as I mentioned earlier is there a potentially deeper use that could be initiated by those who have a different intent or purpose?

After viewing this next video we would like the group to respond with how they might see this new technology used for spiritual purposes.

Henry Miller meets H.P.B

“I had just been reading Madame Blavatsky’s Isis Unveiled, but was not given to mystical experience.

As I looked at a photograph of [Madame Blavatsky’s] face....I was hypnotized by her eyes and I had a complete vision of her as if she were in the room.

Now I don’t know if that had anything to do with what happened next, but I had a flash, I came to the realization that I was responsible for my whole life, whatever had happened. I used to blame my family, society, my wife . . . and that day I saw so clearly that I had nobody to blame but myself. I put everything on my own shoulders and I felt so relieved: Now I’m free, no one else is responsible. And that was a kind of awakening...” Henry Miller

(Extracted from the Publication, Trycycle by David White)

Vocal
Source



Reference
Image



Generated
Video



8:00



Vocal
Source



Reference
Image



Generated
Video

8:00



FORMULA 4 for group integration

- A cautionary note is warranted here. The animated symbol shared here is given by the Master DK for group integration and use. It is specifically constructed to stimulate the etheric body of the viewer and its use should be discontinued if any discomfort is experienced.
- The use of this type of symbol can become a type of ritual enacted upon the mental plane when the full creative participation of the student's imagination or picture-making faculties are engaged. "Energy we know follows thought" but only if the interior focus and concentration is powerful enough. This is an important consideration since the higher initiations take place primarily in the causal field and only in the personality or physical brain as a reflex or grounding agent.

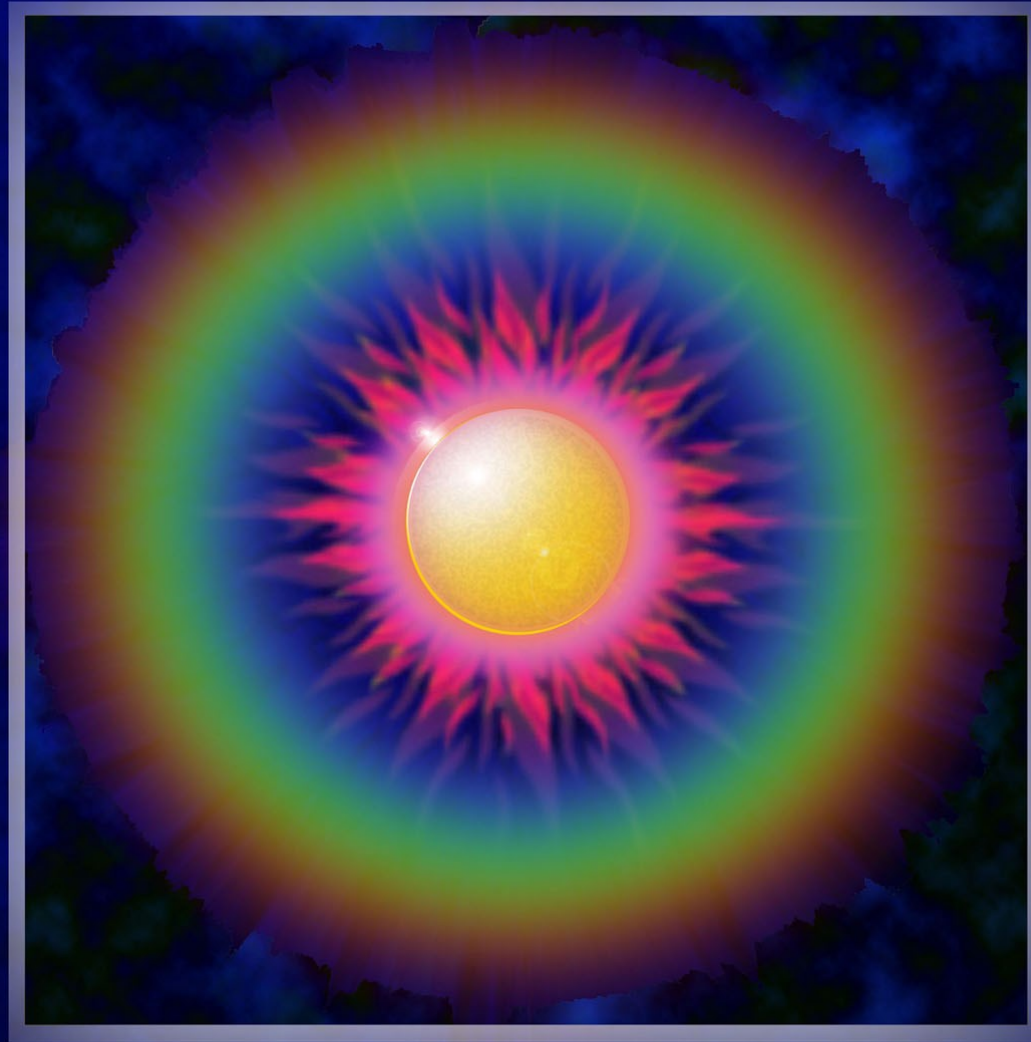
Formula 4

- **Formula 4 . . . Concerns dynamic energy and is the basis of the true Laya-Yoga; this yoga deals ever with the point within the circle and its relation to other points which condition the evolutionary process. (DINA 2 366)**
- **neither time nor space exists."**
-
- **Formula Four has a specific effect upon the "jewel in the lotus," awakening it to life; this it does (through effects produced) upon the three planes of the three worlds, thus bringing about changes in the seven wheels (centres) so that the "dynamic point at the centre of each wheel obliterates the lesser points of force, and thus the wheel begins to turn upon itself." DINA 2 250)**

Formula IV . . . Lead us from chaos to Beauty.

- “This formula is presented in the form of a symbol—one which is in such constant movement that it is most difficult to describe or to make it live before you.
-
- There lies before the investigator a square or oblong, composed of a kaleidoscopic mass of inchoate colours, moving, pulsating and in constant indescribable confusion. Superimposed upon this square is a radiant sun with a penumbra composed of the seven prismatic colours; these radiate from the sun in regular rhythmic bands and produce a marvelous blaze of colour. The background of the square appears to have its confusion of colours shown of a heavy, brilliant kind and quality; the scheme of beauty emerging (even if it appears as superimposed) is translucent and delicate and radiantly living in hue. The heavier background can be distinctly seen through the translucence.
- This formula differs according to the polarization of the one who visions it and who studies it. If he is focused in the personality, and is therefore conditioned by his personality ray, one type of energy will impinge upon his consciousness; if he is soul conscious and soul focused, another type of energy will have its effect. Thus two different pictures will emerge. Both will be correct, but the interpreting agent will be different.

Radiantly Living in Hue



...a radiant sun with a penumbra composed of the seven prismatic colours;
these radiate from the sun in regular rhythmic bands and produce a marvelous blaze of colour.

