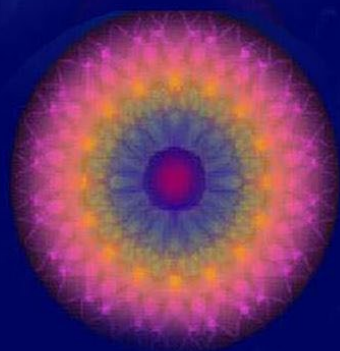


"Blaze of Refulgent Glory"

Awakening the Higher Mind and the Intuition



*Avatars - Asteroids
Part -2*



- **D. We outlined in our last meeting how the asteroid Atlas 3 moving now through our solar system in Oct-December may have spiritual implications according to the ageless wisdom teachings.**
- **What H. P. Blavatsky, DK, via Alice A. Bailey as well as the Rosecrutions stated on this important subject**

Divine Intervention:

We have, therefore, hinted at the following forms of divine intervention:

1. Divine embodiments
2. Natural cataclysms
3. Evocation of slumbering Entities
4. Emergence of inspired leadership.

There still remains one mode of intervention which is still more mysterious, illimitably more powerful, and definitely more difficult both to evoke and subsequently to contact. This is the emergence, response, or appearing of great Sons of God Who dwell in sources far removed from our planetary life altogether; this involves the appearance of Lives of such stupendous and divine expression and potency that only the massed spiritual purpose of vast numbers of men can be potent enough and far-reaching enough to pierce beyond the veil which protects the Earth, to those far distant realms where They have Their natural and everlasting abode. They cannot be reached by prayer or even by well formulated desire—the expression of the wish life of the masses. They lie utterly beyond the realm of feeling (as humanity understands it) and dwell ever in that high place which can only be reached by intentionally directed, selfless thought.

Are there enough people in the world today whose focused and illumined thought can be organized and directed towards these Lives in such a manner that They can be attracted and led to respond to human need for deliverance? Such is the problem. It is possible, but not, perhaps, probable. The problem of a blended demand from the spiritual Hierarchy and from humanity—simultaneously expressed—will have to be met, and this is by no means easy of accomplishment. Such is the question. If this can be done, the evil past and the glorious future may perhaps be brought into contact in the unhappy present, and an event take place which will produce stupendous changes.

(Externalization of the Hierarchy 261-62)

We are not alone!

PONDER ON THIS

“In my last instruction, I made the statement that meditation was the major creative agent in the universe. There are other universes that are ahead of us in development and, in them, the emphasis may not be upon creation by use of mental energies; others may not be so advanced and, in them, mental energy may be in the process of unfolding or expressing itself—in the evolutionary sense. There are also universes and solar systems where the quality and the conditions of the manifesting universe, solar system or planet are unknown to us. It must be borne in mind that though in all manifestations the three aspects (of purpose or will, attraction, magnetic love or plan, and appearance as manifestation of both of these) are necessarily present, the manifesting Entity (responsible for these expressions of divinity) may work through and "occultly declare" conditions and qualities of which we have no experience or knowledge. We may possess utterly no idea in the highest flights of our abstract thinking (and this includes the most advanced thinkers upon our planet) of the nature of the impulses and concepts which animate certain universal Creators. Ponder on this.” (DINA 2, 208-9)

Shamballa impact of 2025

One of the greatest events in the history of science and humanity is now taking place and we on a deep subjective level may be an intimate part of this awesome event.

It has been prophesized that the Shamballic impact of 2025 will bring revolutionary changes to our personal perceptions of reality, our group work, and the entire planet.

It is important to also realize that these saving forces come not only from our spiritual hierarchy that works from within our Solar Sytem but from those forces that may come from out side our Solar System all together



THE **FUTURE** OF
EVERYTHING

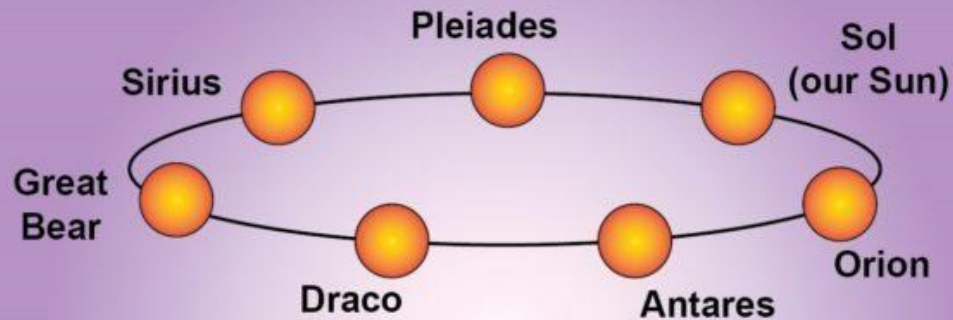
NYT WRITER TRIES TO NAVIGATE NEW YORK CITY WITHOUT A.I.



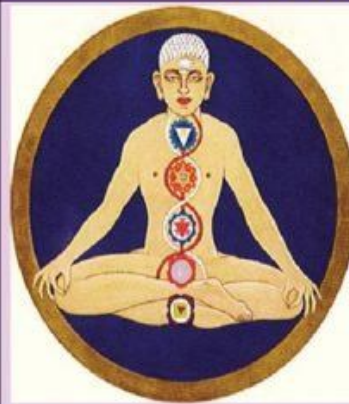
DR. Steven Greer

- Steven Green the UFO researcher shares a meditation which is actually quite advance and occult.
- [Link](#)

The Seven Solar Systems



GRAND HEAVENLY BEING: THE SEVEN CENTRES



- 1 - Head: Great Bear
- 2 - Ajna: Sirius
- 3 - Throat: Pleiades
- 4 - Heart: Sol (Our Sun)
- 5 - Solar Plexus: Orion (Betelgeuse)
- 6 - Sacral: Antares (Heart of Scorpio)
- 7 - Base of Spine: Draco

MONAD

CROWN CENTER
SYNTHESIZING 7
LESSER HEAD CENTERS

1000

HEAD
RAY 2 7

EGOIC LOTUS
12 PETALLED HEART
CENTER IN HEAD

ALTA MAJOR
Synthesizing 4 lower
personality centers

ALTA
MAJOR
RAY 3 6⁰

96
AJNA
RAY 5 3⁰

16
THROAT
RAY 3 6⁰

12
HEART
RAY 4 4⁰

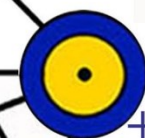
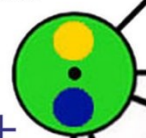
6
SACRAL
RAY 7 1⁰

10
SOLAR
PLEXUS
RAY 6 2⁰

0 Refers to the number
of initiation.

Major triangles to
the 5th Initiation.

1
4
7



Shoulder
Blades

Spleen

Diaphragm

Pranic Triangles

The Rays and the
respective initiations and
centers that they will activate
as the disciple undergoes the
divine initiatory experience.

BASE OF SPINE
RAY 1 5

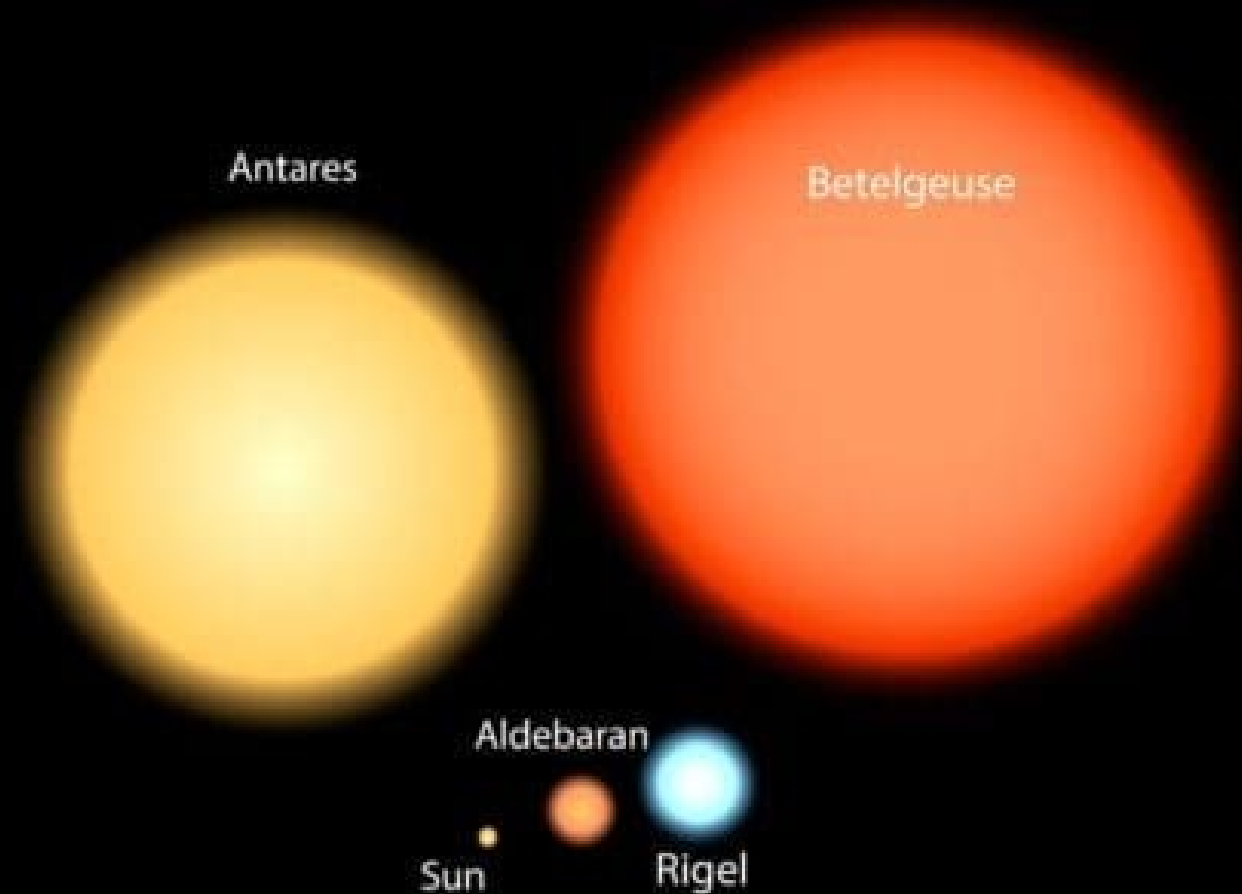
Modified and adapted
from TCF page 169-170

No claim is made by the author
to the accuracy of these correlations.
C Duane Carpenter

2025 and the impact of Divine Will

- The science of the soul in its various aspects (mental, psychical, and spiritual) is making much headway now in the world, and is absorbing more and more the attention of thinkers. This is the result of certain waves of energy impinging upon our solar system and thus eventually finding their way to our planet. (Treatise in Cosmic Fire, P. 1256)
- The most important star systems, or constellations, filtering through our own Solar Logos at this time and given by DK that have a direct influence on our planetary life and all the kingdoms of nature at this time are:
 - **Ray 1. Great Bear (Ursa Major)**
 - **Ray 2. Sirius**
 - **Ray 3. Pleiades**
 - **Ray 7. Draco**
 - DK further states:
 - “To these would be added other streams of energy which definitely play upon and affect our planetary life, such as those coming from that great star, **Betelgeuse, or from Antares** and other stupendous suns and solar systems... (EP 2 15-16)
- Although all these cosmic influences distribute different ray qualities, they all, in their higher expressions, embody some aspect of Divine Will, or what DK has also designated as “the Principal of Directed Purpose.” A principal that working through the 7th ray at this time historically synthesizes all of the 7 ray qualities into something totally new and unknown into our solar system as well as our lesser planetary and human systems.

BETELGUESE- 3rd Cosmic Path





The Orion Nebula Betelgeuse

School of Beneficent Magicians

ཨོཾ་མ་ཎི་པ་དྲེ་ནུཾ་

Quality Gained:
Cosmic Etheric Vision
Septenary Clairvoyance.

Mantra Yoga

Lords of
Cosmic Maya

Special Aptitude
in colour
and sound...

Jupiter

2nd order

Sagittarius

Path 3

The Path of the Planetary Logos

“As the stars sing together,” as the “chant of the Gods” peals forth in the great choir of the Heavens, it produces a corresponding color symphony.”

Method: Prismatic Identification

“The Chohans of high degree know the forty-nine sounds which give the quality of the consciousness aspect of these great Beings Who are as far removed from the consciousness of our Solar Logos as the consciousness of man is removed from that of a crystal. The knowledge thus appreciated by the Chohans is naturally but theoretical and conveys only to their relatively limited consciousness the general nature of the group of constellations, and the force occasionally emanating from them which has at times to be taken into calculation. For instance, the interest awakened in the public mind lately by the giant star Betelgeuse in the constellation of Orion is due to the fact that at this particular time there has been an interplay of force between our tiny system and this giant one, and communication between the two informing Existences.”(TCF 1986-87)

The Third Cosmic Path

“Students may be surprised to know that the source of the peculiar cosmic energy which is found streaming towards our system along this cosmic Path is that of the sun Betelgeuse. This name is, however, a blind. The reason that certain facts connected with this sun have lately come more prominently before the public is in reality a subjective one. The science of the soul in its various aspects (mental, psychical, and spiritual) is making much headway now in the world, and is absorbing more and more the attention of thinkers. This is the result of certain waves of energy impinging upon our solar system and thus eventually finding their way to our planet. Betelgeuse from the occult standpoint is a system of the second order, just as our solar system is one of the fourth order. There is consequently a relation between these two numbers both in the system and the cosmos. This influence reaches our system via the sign Sagittarius.” (TCF 1256)

The Third Cosmic Path

“It is difficult to express in words the method employed by a Master of the Wisdom as he enters this cosmic Path. It has been called the method of prismatic identification, for it concerns the colour veils which shroud the spiritual energy. Another mode of expressing the same truth is to say that it is the method of understanding the song of life. As the "stars sing together," as the "chant of the Gods" peals forth in the great choir of the Heavens, it produces a corresponding colour symphony. This particular mode of identification enables the adept to act as a director in the chorus and to produce the needed colour effects and chords. When he can do this to perfection he is then in a position to take up office as a planetary Logos. More it is not permitted to say and the above is but a symbolic way of expressing a basic and difficult truth.”

(TCF 1257-8)

“The symbol of this 3rd Path (and the only one it is possible to make exoteric) is a radiant Cross of coloured light; it has the long limb formed of the seven colours of the solar spectrum, and the transverse limb is composed of twelve gradations of colours as yet unknown to man. In the centre of the Cross is to be seen a five-pointed star in a deep indigo shade, and behind it is a blazing sun of a warm dark blue. Above the whole are certain Sensa characters, depicted in gold, and conveying to the initiated adept the name of one or other of the planetary Schools in which this particular line of study is undertaken. There are, as has been already said, seven such schools and candidates for this Path from our planetary scheme are transferred to the inner round and from thence to the Jupiter scheme.” (TCF 1257-8)

The Orion Nebula
Betelgeuse

School of Beneficent Magicians

Quality Gained:
Cosmic Etheric Vision
Septenary Clairvoyance.

Mantra Yoga

Lords of
Cosmic Maya

Special Aptitude
in colour
and sound...

Jupiter

2nd order

Sagittarius

Path 3

The Path of the Planetary Logos

“As the stars sing together,” as the “chant of the Gods” peals forth in the great choir of the Heavens, it produces a corresponding color symphony.”

Method: Prismatic Identification

2

The School of Beneficent Magicians.

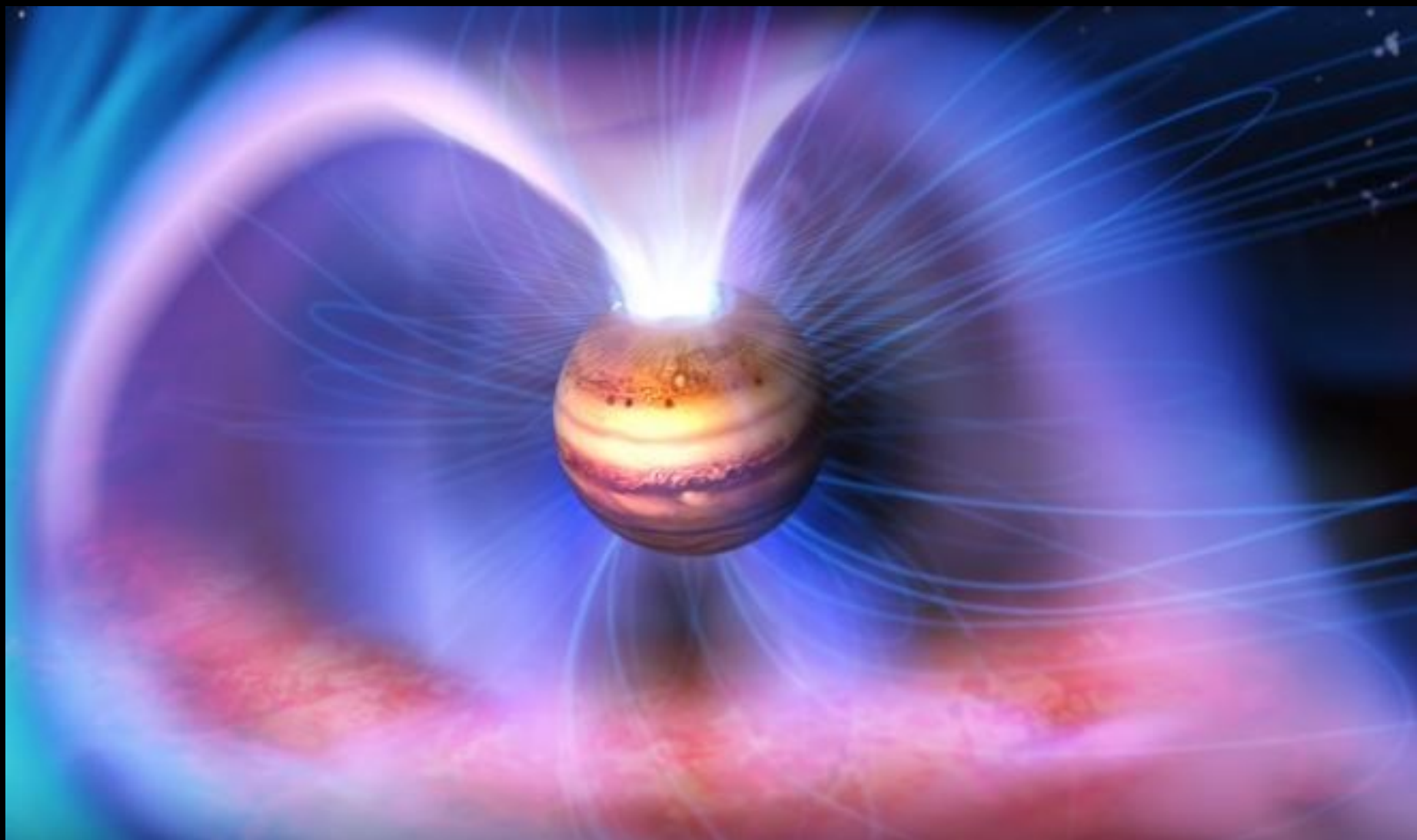
2

Jupiter



*The Palace of Opulence
The Sowers*

"College of Quadruple Force units"

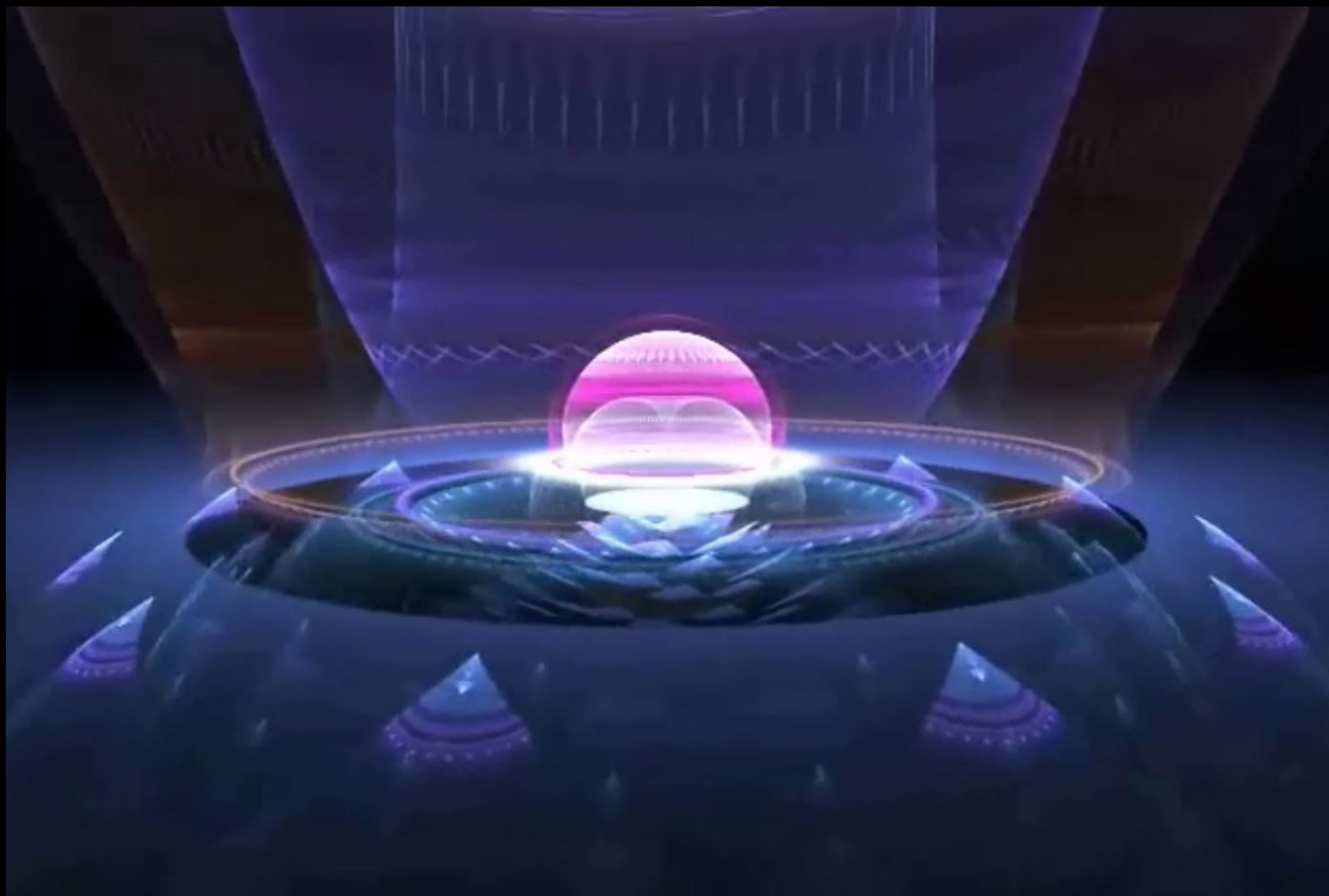


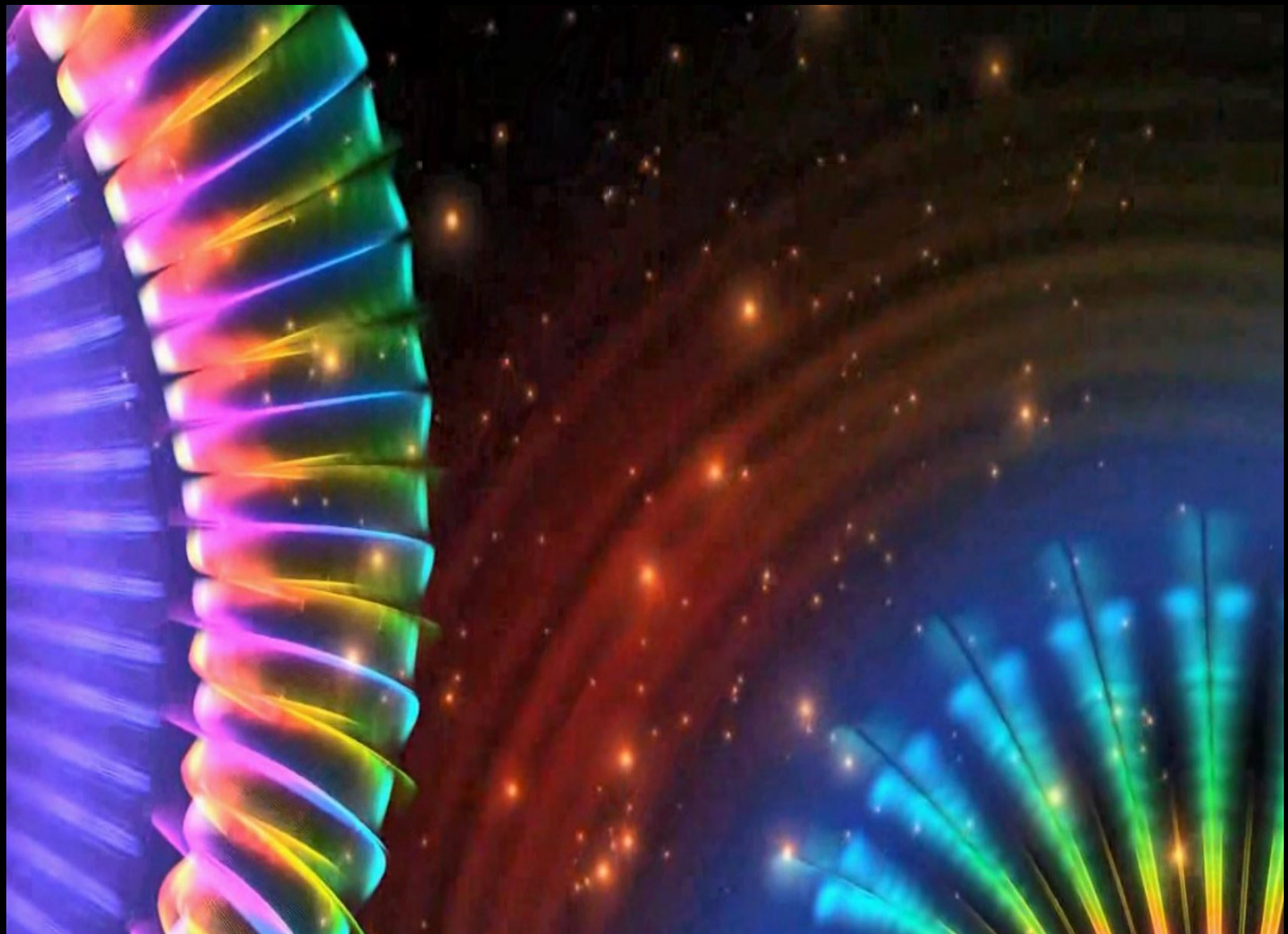
AI and factual information

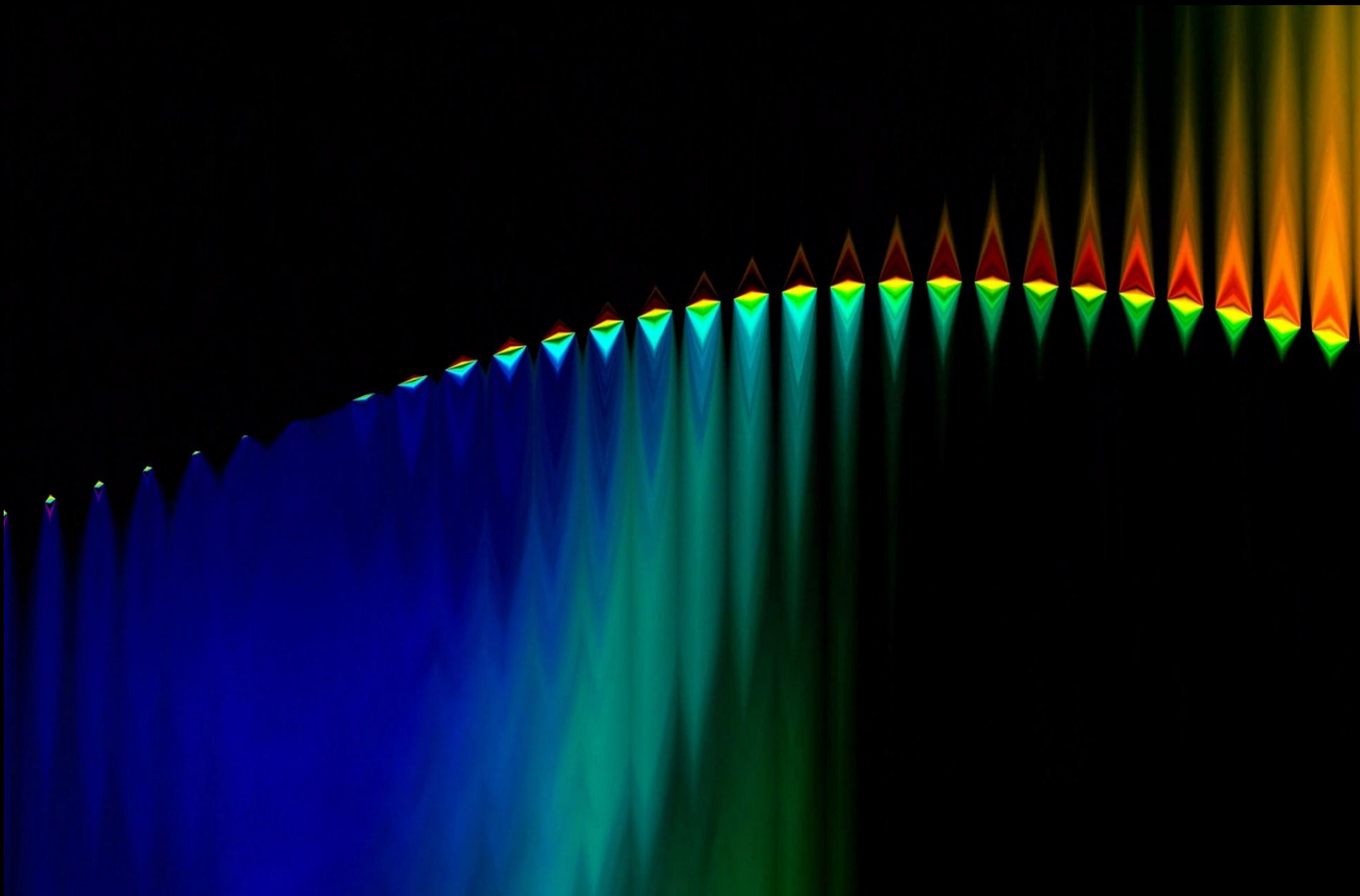
Because there are no laws governing the use of AI at this time historical there are many videos that may be a distillation of certain scientists thoughts on a given subject loosely strung together which can be accurate or they can be a falsification of that persons original statements. This next video is an example. Mikio Kaki, the famous Astro-physicist and Cosmologist may not have actually created this next video, but further research indicates that he has in fact made these different statements but have now been strung together for easy assimilation. Everyone is waiting for official information from the government on Atlas but very little has been shared. One of the things we need to understand is that whatever the government doesn't understand or can't control they often deny it exists, at least publicly.

The question one might now ask is why would someone want to use a fabricated video even if the facts are correct, as opposed to just going to the original source? Timing, and the length of the video are an important factor here in these presentations since most of Mikio Kaki's direct statements are way to long to list here.

So it is for this reason We suggest you take the time to do your own direct research.









**SCIENCE
FOR SLEEP**



THE MANTRA OF FIRE:

"I seek the way, I yearn to know.

Visions I see and fleeting deep impressions.

Behind the portal, on the other side,

lies that which I call home.

For the circle has been well nigh trod and the end approaches the beginning. I seek the way, all ways my feet have trod.

The way of fire calls me with fierce appeal.

Naught in me seeks the way of peace.

Naught in me yearns for earth.

Let the fire rage, the flames devour.

Let all the dross be burnt.

And let me enter through that gate and tread the way of fire."

The Fires of Purification

