

*"Blaze of Refulgent Glory"*

*Awakening  
the Higher Mind  
and the Intuition*



*Atlas Asteroid - 3  
Bubbles of Koilon  
Fermi Bubbles*









# Atlas as a possible Avatar From Sirius

1. Philip suggest asteroid Atlas may be an avatar from Sirius.
2. Atlas approach to the earth on December 19 coincides with
  - A. An excitement and expectation that many feel and intuit will bring great awaited changes in Humanity.
  - B. Capricorns solstice on Dec.19-20.with xmas on the 25.
  - C. Our Sun or solar logos may well be undergoing some kind of initiation, given the extraordinary degree of electrical activity and solar flares.
  - D. A potential emissary from the Great White Lodge on Sirius.
  - E. New moon on the 20<sup>th</sup> of December.

Philip Lindsey's astrological link.

[https://esotericastrologer.org/newsletters/sagittarius-new-moon-capricorn-solstice-3i-atlas/?utm\\_source=sendfox&utm\\_medium=email&utm\\_campaign=sagittarius-new-moon-capricorn-solstice-3i-atlas](https://esotericastrologer.org/newsletters/sagittarius-new-moon-capricorn-solstice-3i-atlas/?utm_source=sendfox&utm_medium=email&utm_campaign=sagittarius-new-moon-capricorn-solstice-3i-atlas)

[https://www.astrolog.org/astrolog/pic/3i\\_atlas.gif](https://www.astrolog.org/astrolog/pic/3i_atlas.gif)

The esoteric astrologer Walter Pullen has created an animated chart of interstellar comet 3I/ATLAS that shows it in an astrology chart (along with the corresponding path through the solar system orbits) It will pass the earth at its closets point on December 19<sup>th</sup>.

at: [https://www.astrolog.org/astrolog/pic/3i\\_atlas.gif](https://www.astrolog.org/astrolog/pic/3i_atlas.gif)

# The Evolution of Color and Light

Anyone else  
feel like  
WE Are going  
NEON?!

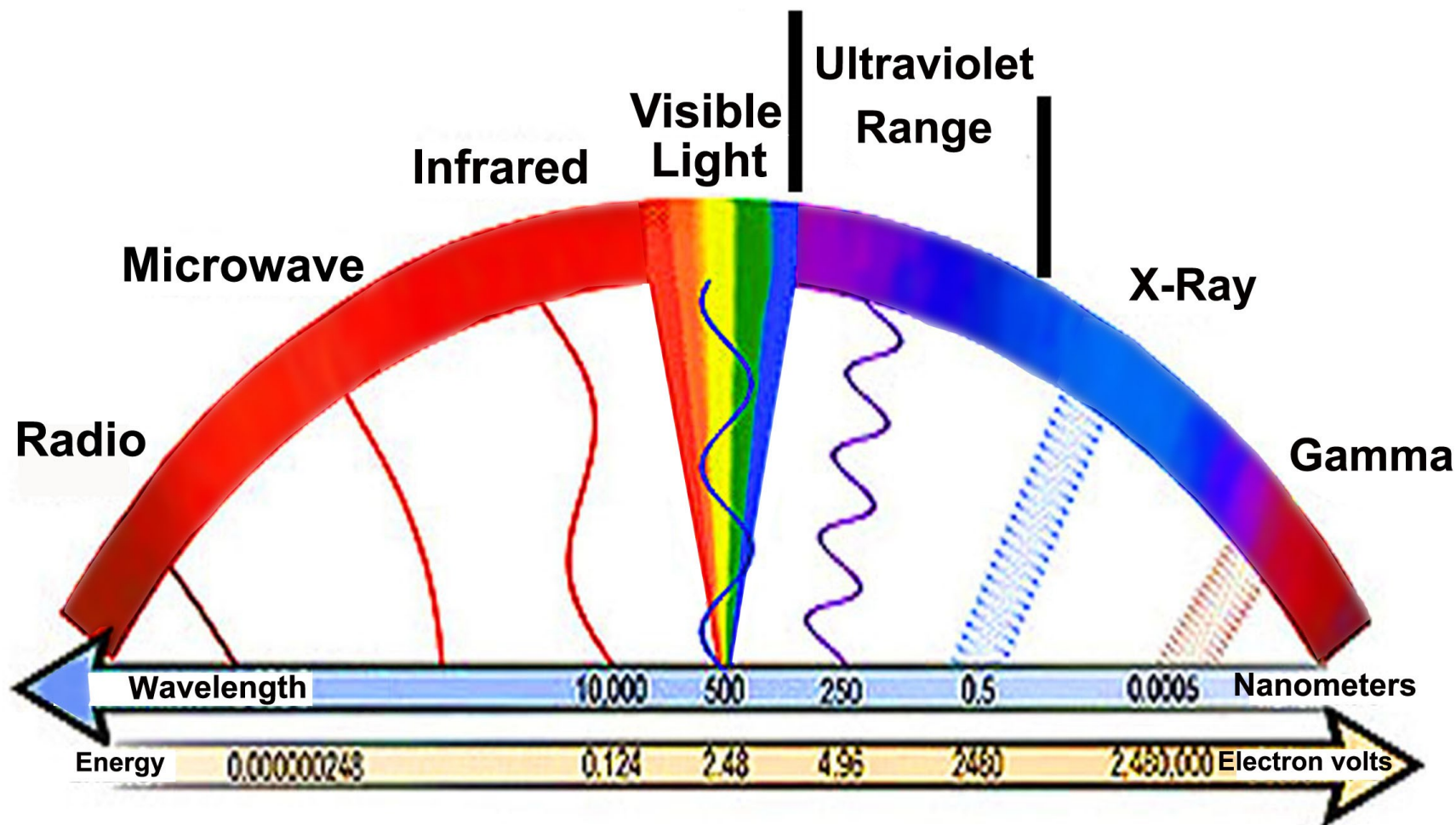
# Bring within our range of contact the infra-red and ultra-violet colours

- “In speaking about the increased radiance of light seeping in from the etheric and astral planes DK has this to say: "The light from the astral plane (a starry radiance) and the light of the planet itself will be more closely blended, and the result upon humanity and upon the three other kingdoms in nature cannot be over-emphasized... **It will bring within the radius of our range of contact the infra-red and ultra-violet gamut of colours...**"  
(EP 1, 103-4)



**Elementals**

**Devas and  
Angelic Kingdoms**



**Light-Weaver**



# 2025 and the impact of Divine Will

- The science of the soul in its various aspects (mental, psychical, and spiritual) is making much headway now in the world, and is absorbing more and more the attention of thinkers. This is the result of certain waves of energy impinging upon our solar system and thus eventually finding their way to our planet. (Treatise in Cosmic Fire, P. 1256)
- The most important star systems, or constellations, filtering through our own Solar Logos at this time and given by DK that have a direct influence on our planetary life and all the kingdoms of nature at this time are:
  - **Ray 1. Great Bear (Ursa Major)**
  - **Ray 2. Sirius**
  - **Ray 3. Pleiades**
  - **Ray 7. Draco**
  - DK further states:
  - “To these would be added other streams of energy which definitely play upon and affect our planetary life, such as those coming from that great star, **Betelgeuse, or from Antares** and other stupendous suns and solar systems... (EP 2 15-16)
- Although all these cosmic influences distribute different ray qualities, they all, in their higher expressions, embody some aspect of Divine Will, or what DK has also designated as “the Principal of Directed Purpose.” A principal that working through the 7<sup>th</sup> ray at this time historically synthesizes all of the 7 ray qualities into something totally new and unknown into our solar system as well as our lesser planetary and human systems.

# Ray 1: The Great Bear

**“The stars in the Ursa Major constellation (which is not a single star but a group of stars, often associated with the Big Dipper asterism) emit ultraviolet (UV) light as part of their blackbody radiation spectrum, given their surface temperatures typically range from about 5,000–10,000 K or higher for the brighter ones like Alioth or Dubhe. This UV light does travel through space and reaches Earth”. (Grok)**

## Ray 2: Sirius

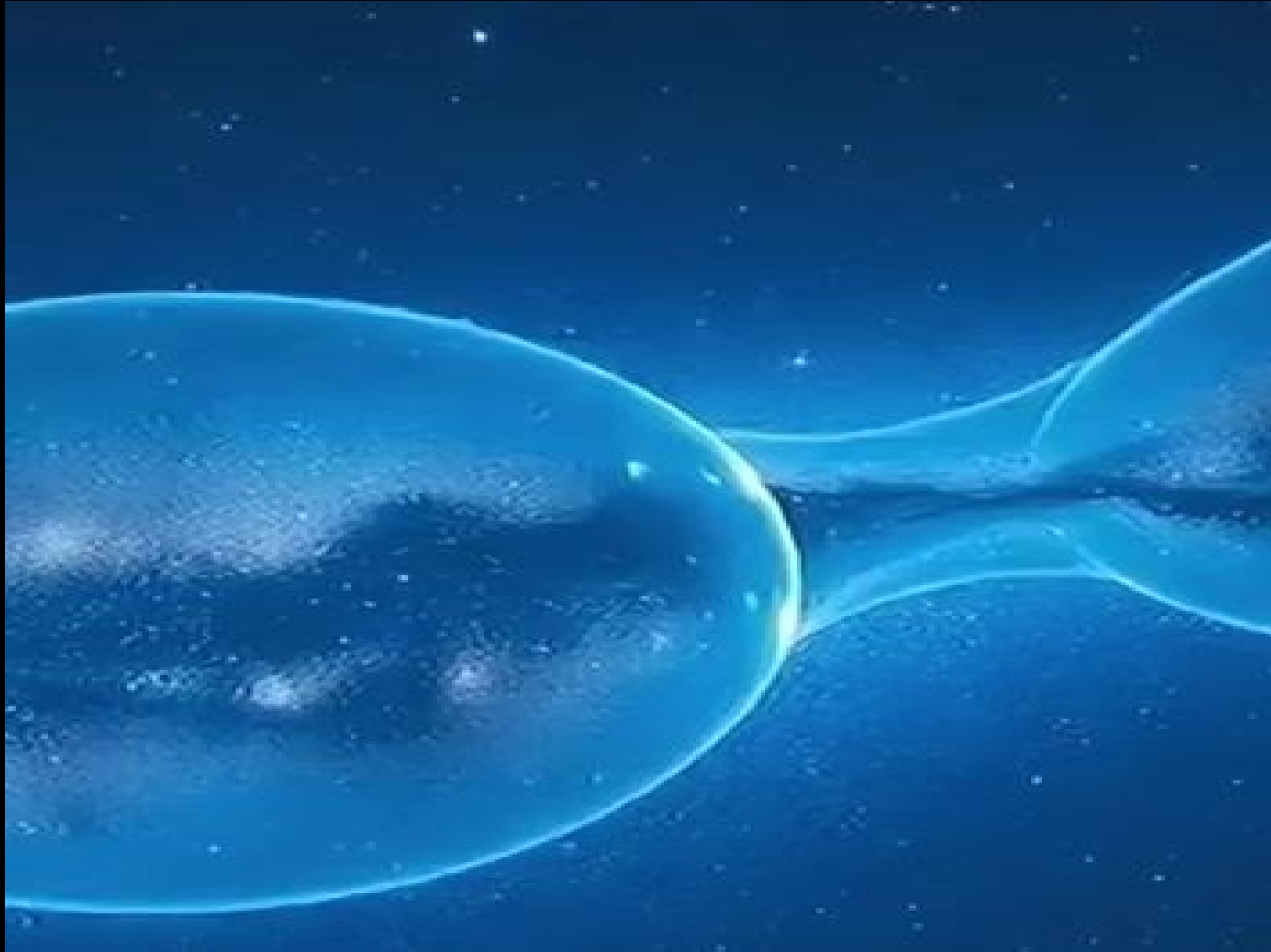
**“Electromagnetic radiation (often referred to as “cosmic energy”.... is emitted by the Sirius star system, particularly from its primary component Sirius A, includes ultraviolet (UV) light. Sirius A is a hot, blue-white star with a surface temperature of approximately 9,940 K, which causes it to emit strongly across the visible spectrum and into the ultraviolet range.”**



# Ray 3: The Pleiades

**“The Pleiades, also known as Messier 45, is an open star cluster containing hot, young B-type stars that emit light across a broad spectrum, including significant amounts of ultraviolet (UV) radiation due to their high surface temperatures (typically 10,000–30,000 K). This UV emission has been directly observed and studied using space-based telescopes, confirming that the light travels the approximately 444 light-years to reach Earth's vicinity.” (Wikipedia)**

# FERMI BUBBLES

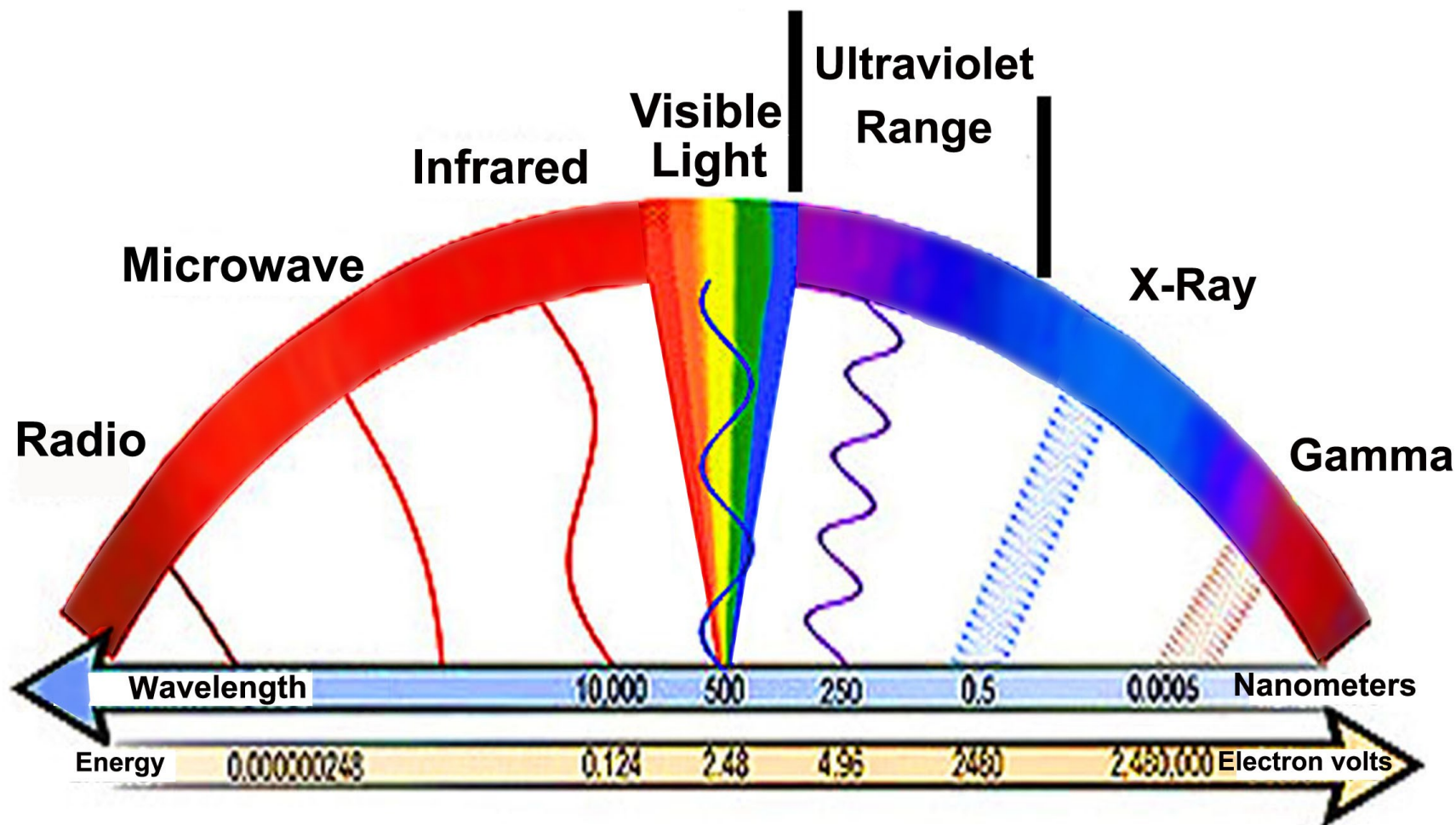






**Elementals**

**Devas and  
Angelic Kingdoms**

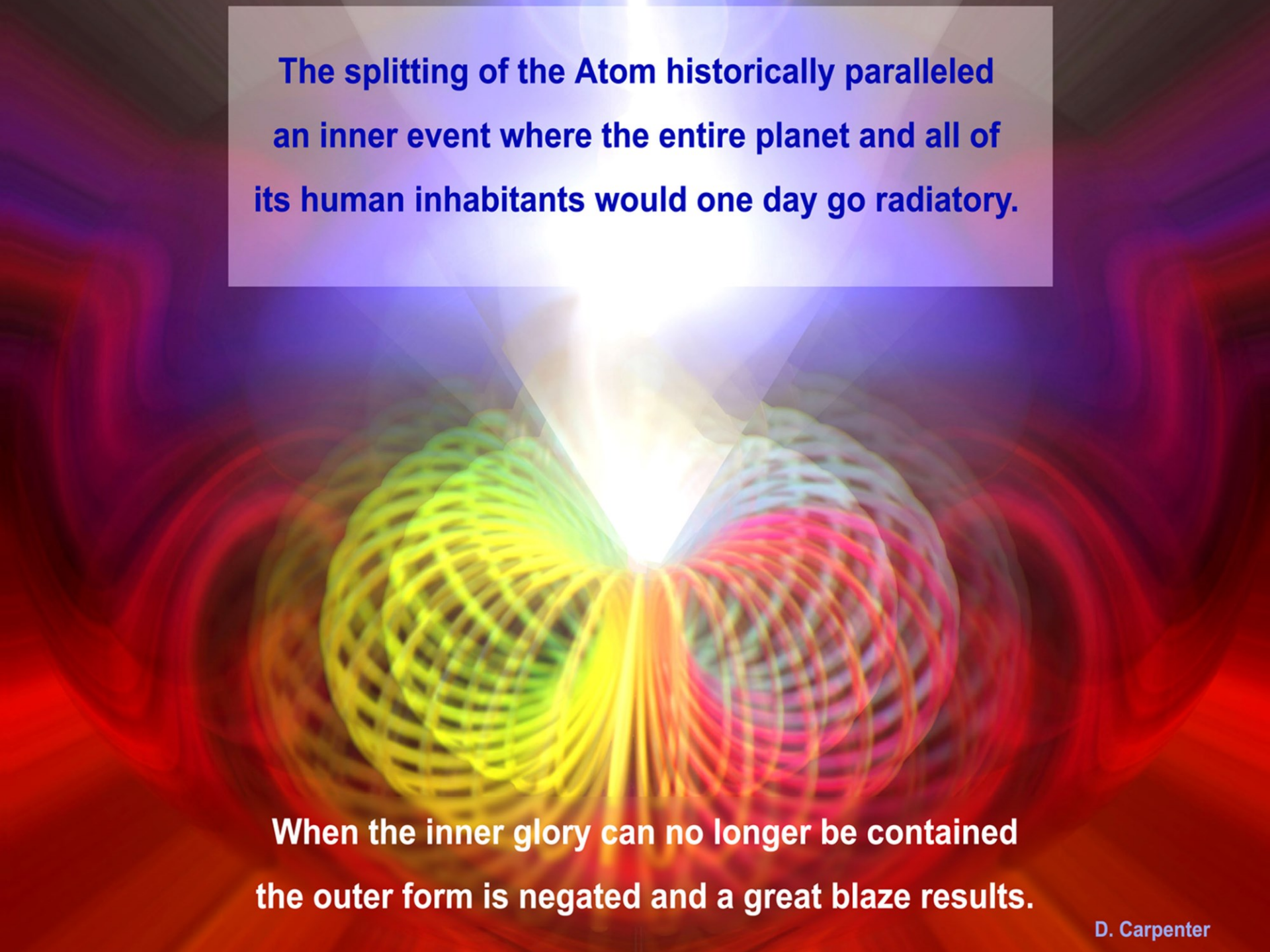


**Light-Weaver**

# **Fermi bubbles act as electrical transistors that amplifies or switches electrical signals and power.**

The space between stars or atoms is equivalent to a transistor which will not flow electricity until saturated by opposing charge. The system flops back and forth as long as there is flow. Since there is no specific production to standardize the capacitance of a star it's likely one will have a higher capacitance than the other and when discharging the smaller star now has to deal with the normal incoming current plus the added slap of the returning stored charge from the larger body, thus the smaller star takes on too much charge, arcs, and explodes.

The differential between two electrical units of occult life is what creates the attraction or repulsion between two entities. The greater and more powerful occult force will in time overpower or draw into itself the lesser life as shared in the previous description and cause it to become repolarized. This occult fact is revealed when we point out that electricity cannot flow between two suns or star systems until one or other become "saturated by the opposing charge." The lesser life stimulated from its center to its outer periphery becomes so powerfully charged that the borders or walls of its confining form or what the occultist calls the "ring-pass-not" disintegrates and there is a rupture and release of energy. This release of energy is what the esotericist's calls initiation and the long term goal between all lesser forms under the impact or influence of a greater life than itself.



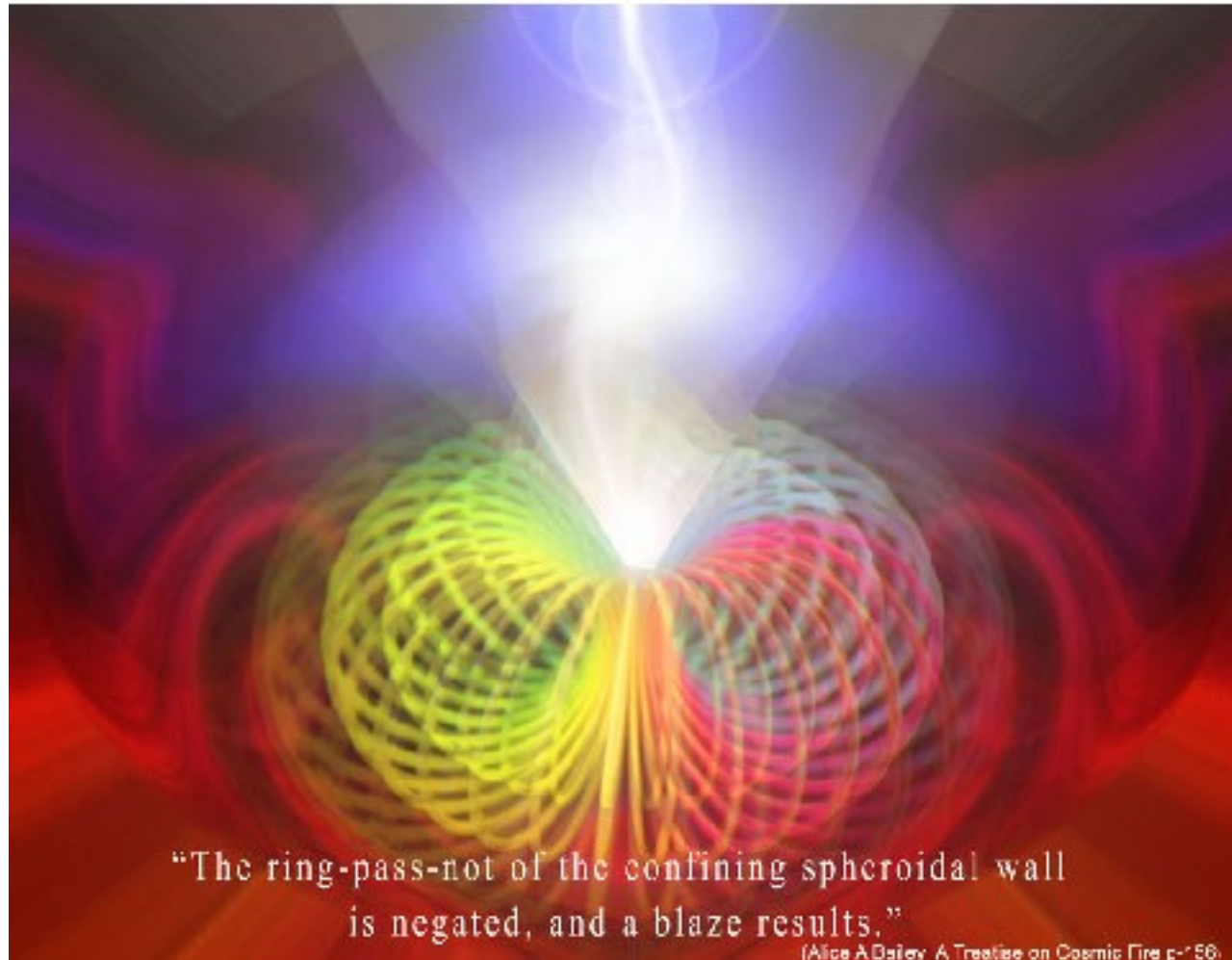
**The splitting of the Atom historically paralleled  
an inner event where the entire planet and all of  
its human inhabitants would one day go radiatory.**

**When the inner glory can no longer be contained  
the outer form is negated and a great blaze results.**



## THE COLORS OF THE RAYS AND THE PLANES

*"It must become apparent how the heavenly man (planetary logoi), as a self conscious entity works with his negative aspect through positive force, thus bringing to maturity the atoms and cells of his body, fanning the flame until each unit becomes fully group conscious and aware of his place within the body corporate..this is the basis of the evolutionary process." (CF p. 612)*



"The ring-pass-not of the confining spheroidal wall  
is negated, and a blaze results."

(Alice A Bailey A Treatise on Cosmic Fire p. 56)



# Discovering ones Geometry

The electronic combinations that compose the atom which has suffered polarisation are grouped in a different geometrical form to those which have not yet experienced the process. It is the effect of the life of the Ego, playing on the matter of the atom and causing various approximations and differentiations unseen in a non-polarised atom. The matter is abstruse and complex.



# PLATONIC SOLIDS



TETRAHEDRON



OCTAHEDRON



DODECAHEDRON

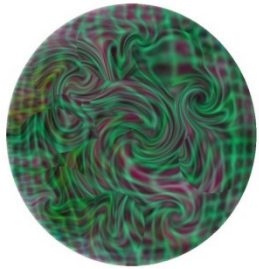


ICOSAHEDRON

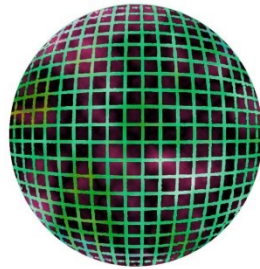


HEXAHEDRON

# The rule of the square is ending

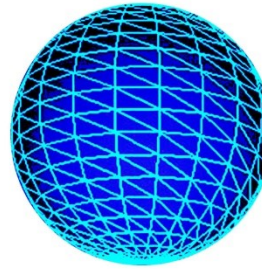


**Inchoate mass of  
diffused and swirling colors**



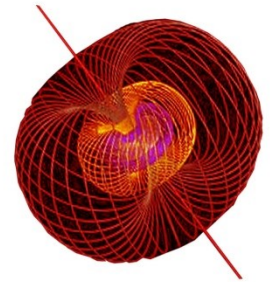
**Personality integration**

Series of squares  
(Green)



**Soul awareness**

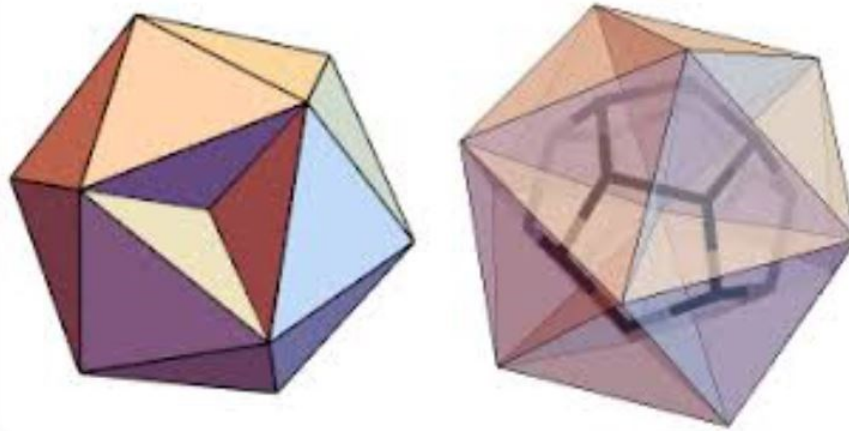
Grid of triangles  
(Blue)



**Monadic fusion**

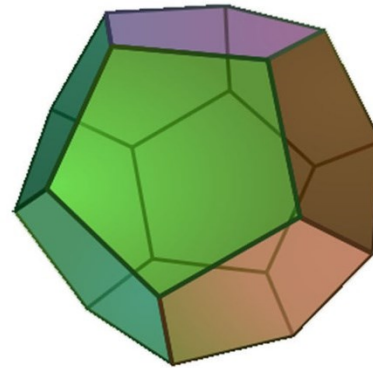
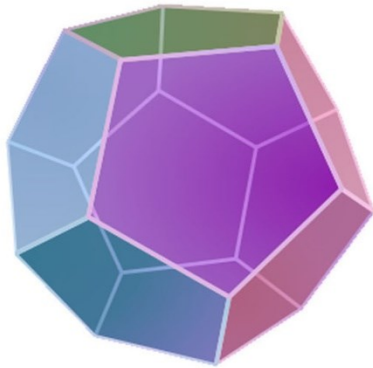
Sphere of circles  
(Red)

Another related view shows how tetrahedra can compose an icosahedron (which is the dual of the dodecahedron), highlighting the geometric relationship:

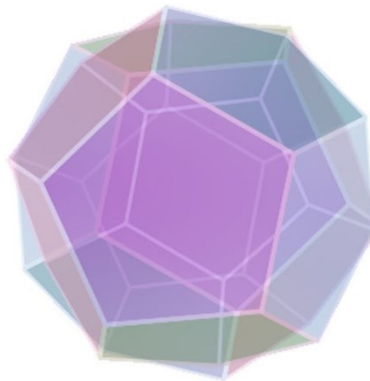


**“The combination of two dodecahedrons is  
useful for promoting the rhythm of fire”**

**Agni Yoga, 361**

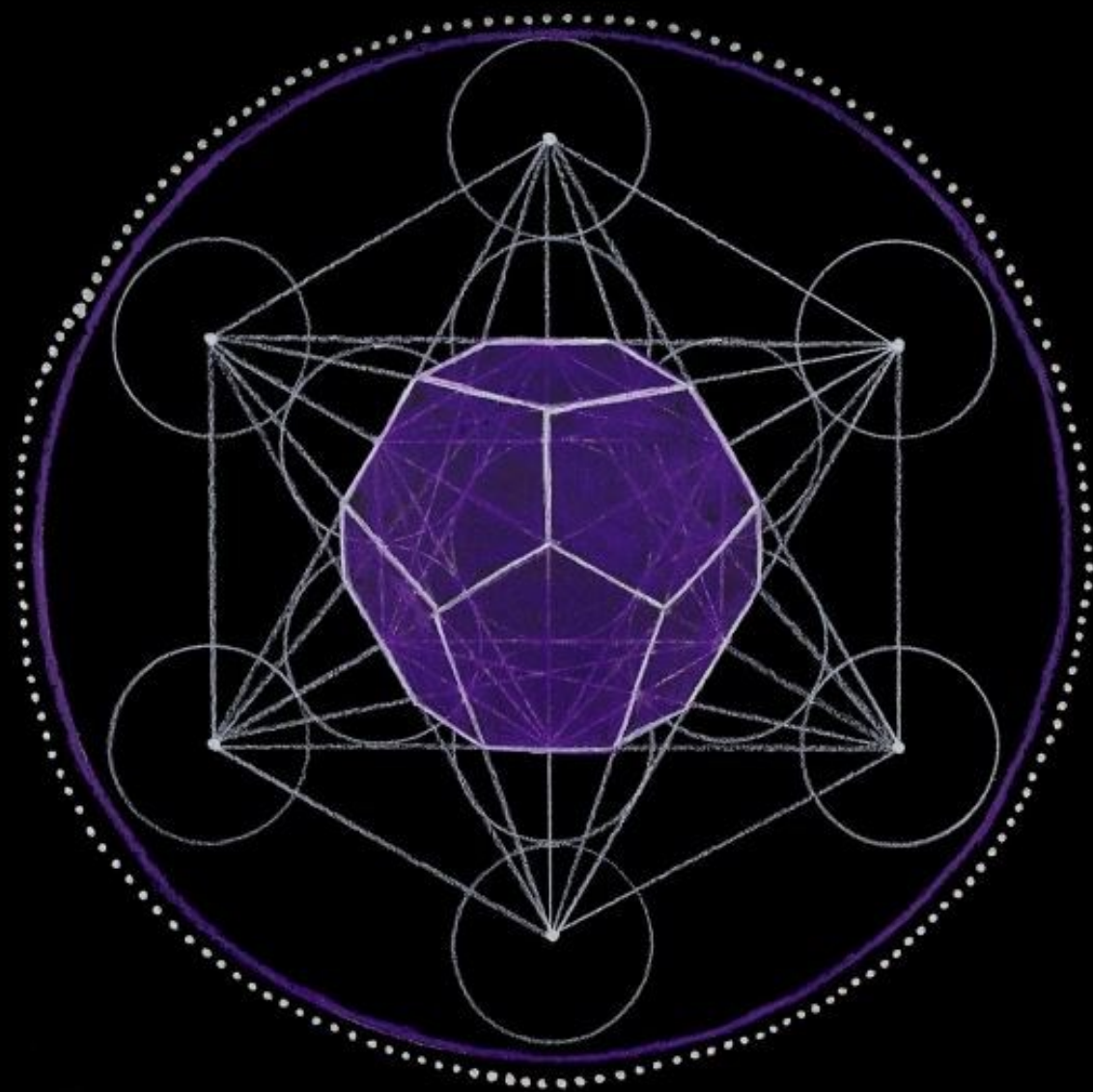


Two Dodecahedrons, each a mirror image of the other



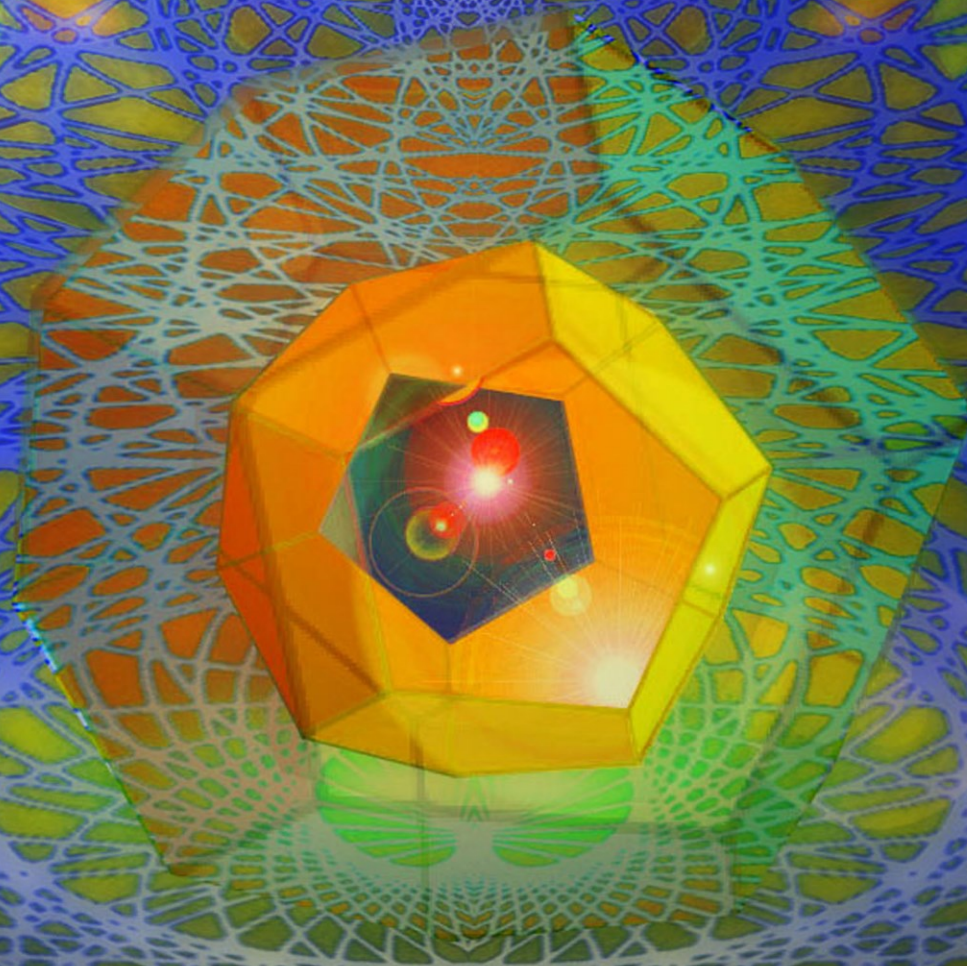
Combination of two Dodecahedrons  
one superimposed over the other.





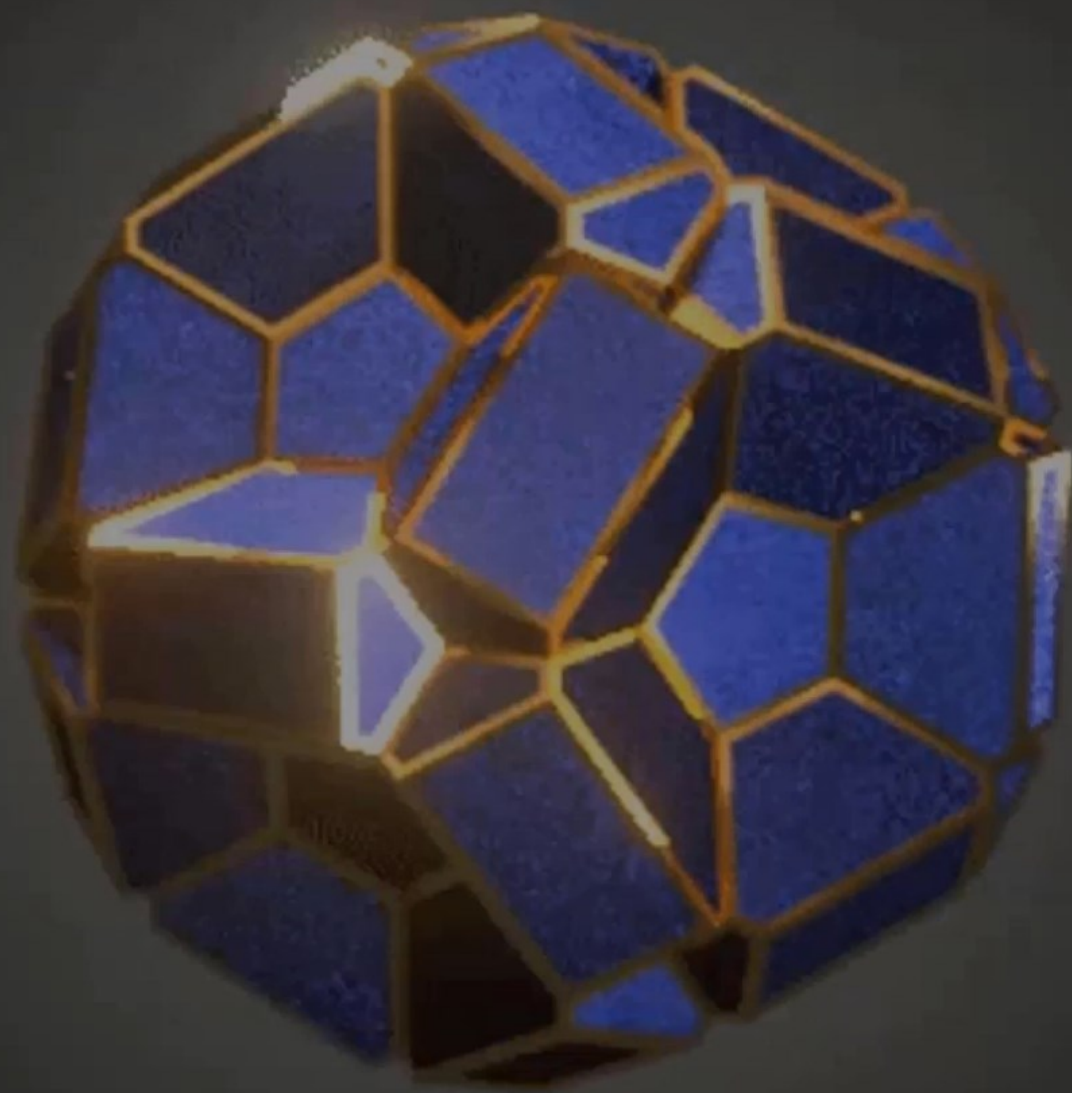


**Multiple Dodecahedrons nesting  
within each other.**



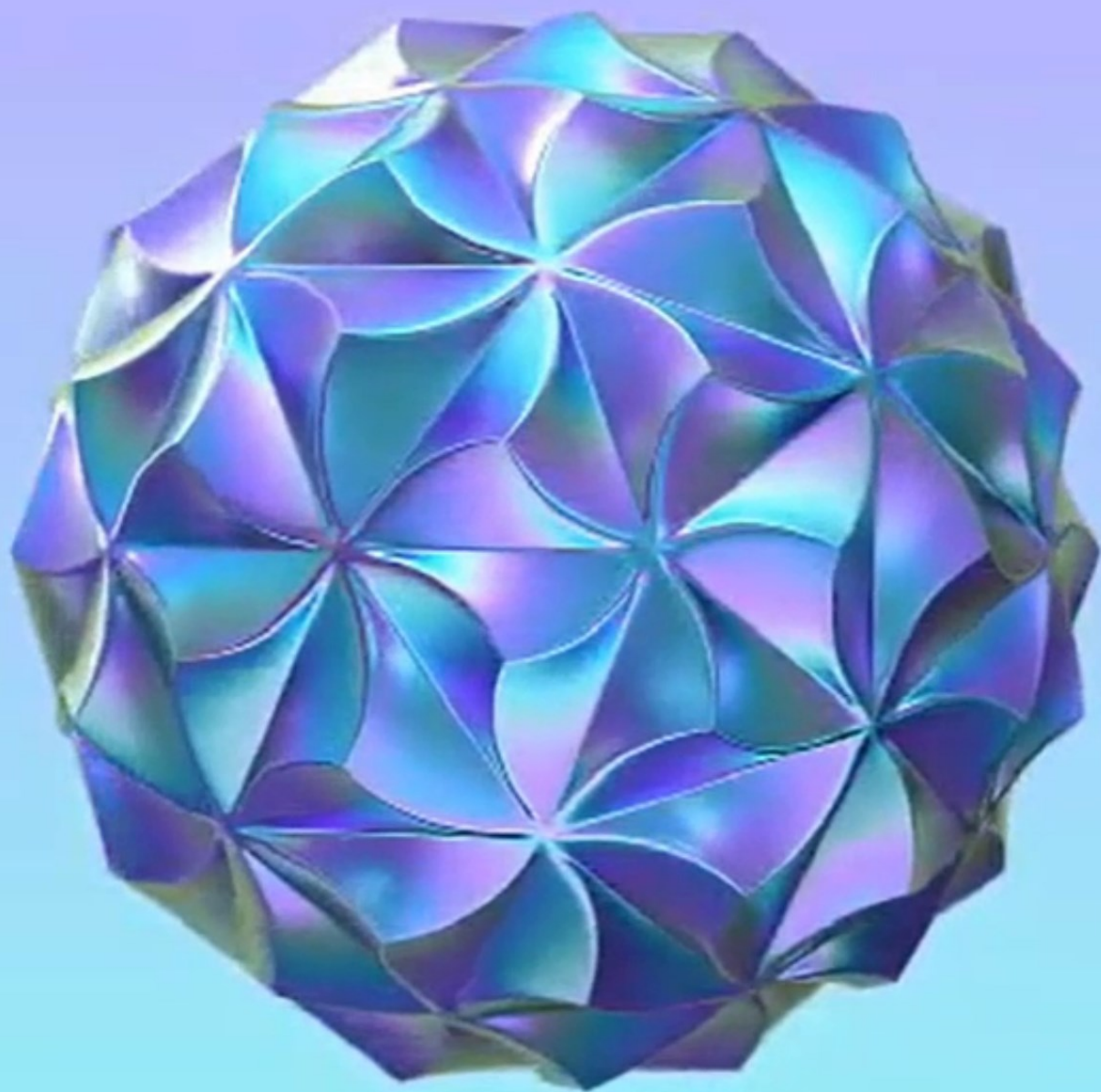
















**The Great Stellated  
Dodecahedron - 12 pointed Star**



# The new astrology will be occupied with the charting of the life of the Soul.

These words were once spoken to me by an ancient seer who bisected the square esoterically, thus forming two triangles and united them in a fresh manifestation to form a Star of Life. Ponder on this.

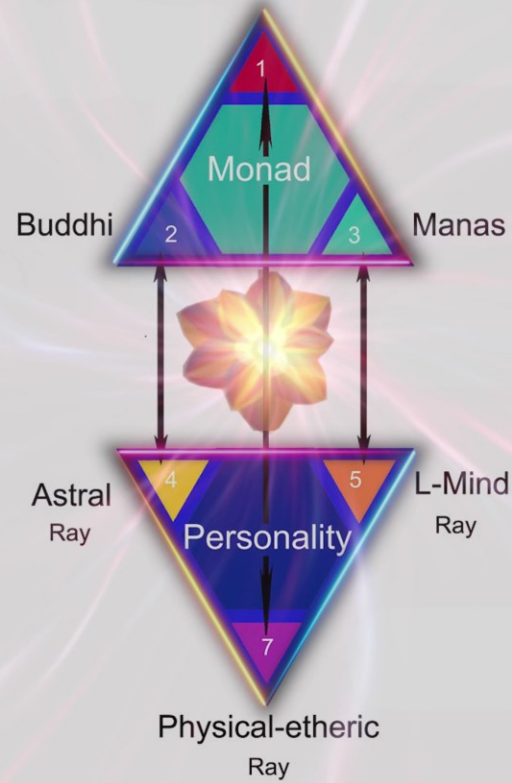
It is for this reason that the astrologers of the future will emphasise the relation and the interrelation of triangles. The new astrologer will, as I have hinted before, lay the emphasis upon:

1. The Science of Triangles, as the result of the growth of the initiate understanding.
2. The rising sign, as it indicates the way of the soul.
3. The place of the three Crosses (the Cardinal Cross, the Fixed Cross and the Mutable Cross) in the life of the soul. This will eventually supersede the houses in the horoscope and the 12 arms of the three crosses will take the place of the 12 houses when casting the horoscope of the soul.

I would reiterate again the fact that the new astrology will be occupied with the charting of the life of the soul. The 12 constellations, as they play their part in the life of the disciple through the medium of their distributing agents, the ruling esoteric planets, will gradually transform the exoteric form of the chart of the individual. This will be due to the focussing of the various energies in man, consciously and through intent, and will not concern his negative reaction to the conditioning energies. (EA 480-81)

Monad

Atma











# Cosmic Consciousness:

## A Study in the Evolution of the Human Mind and the Color Sense

Richard Maurice Bucke in his 1901 book *Cosmic Consciousness: A Study in the Evolution of the Human Mind* discusses the evolution of the human color sense as a relatively recent development in sensory and mental faculties, emerging well after the intellect but within the last 30,000–40,000 years. He positions it as a superficial, acquired ability rather than a fundamental aspect of vision, drawing on philological, etymological, literary, scientific, evidence to support his claims. Below is a summary of his key arguments and the evolutionary progression he outlines.

### Key Arguments

**Recent Evolutionary Acquisition:** Bucke asserts that color perception is "much more modern" than core visual faculties like perceiving light/shade, form, or distance. It did not exist in human progenitors and only arose in the race tens of thousands of years ago, long after basic intellect.

**Evidence from Ancient Literature:** In texts like the Rig Veda (circa 1500–1200 BCE), Zend Avesta, Homeric poems (Iliad and Odyssey), and the Bible, the sky, sea, and other blue objects are described extensively (over 430 references to the sky/heaven across these works) but never by color—specifically, blue is omitted. Bucke interprets this not as accidental but as evidence that blue was not perceived distinctly, often merged with black. For instance, the Rig Veda mentions sky features thousands of times without noting its hue, despite vivid descriptions.

**Etymological and Linguistic Support:** Primitive languages lacked distinct color terms. Bucke cites scholars like Max Müller and Geiger, noting no Sanskrit roots for colors in early Indo-European speech. Colors evolved by splitting: words for blue often derive from black (e.g., English "blue" from German "blau" meaning black; Chinese "hi-uan" for sky-blue originally meant black). This indicates gradual differentiation over millennia.

**Scientific Alignment with Physics:** The order of color acquisition matches the energy gradient in the light spectrum (red has the highest energy/amplitude, violet the lowest). Bucke argues the eye evolved sensitivity starting with higher-energy colors, confirmed by ancient scholars like Xenophanes (three colors: purple, red, yellow) and Aristotle (tricolored rainbow).

Bucke integrates this into his broader theory of consciousness evolution, viewing color sense as a step toward higher faculties like cosmic consciousness. (Grok)

# New Colors Emerging

“Women who can see extra colors may have tetrachromacy, a rare condition where they have a fourth type of cone cell in their retina, allowing them to perceive nearly 100 million more colors than most people. This condition is believed to be exclusive to women because it is linked to genes on the X chromosome, and approximately 12% of women have the genetic potential for it, although only a fraction have the enhanced ability.

What it is: Tetrachromacy is a genetic variation that gives individuals an extra type of cone cell, the photoreceptors in the retina that detect color.

How it works:

While most people have three types of cones (trichromacy), tetrachromats have four, which allows them to see a much wider spectrum of hues.

Why it's more common in women:

The genes for the red and green cone cells are on the X chromosome. Women have two X chromosomes, which gives them a greater chance of carrying different versions of these genes, potentially leading to a fourth cone type.”

*..a triangle of force in shades of varying rose.*



“The Master throws himself - under the liberating Law of  
Sacrifice - into the vortex of the astral life of the One to  
Whom our Lord relates himself with Humble joy.  
And as the Master works, there forms before his eyes a  
triangle of force in shades of varying rose.  
By His magnetic power, he concentrates the energy required.  
then through this triangle of force, as through an open door,  
He sends the potency of love into our planet,  
and till His cycle ends He thus must work.”





# Bubbles of Koilon

“The force or energy that pours through from the higher planes (the breath of the Monad, if you care so to term it) produces a vacuum, or something analogous to a bubble in koilon, and the sheath of the causal body—the ring-pass-not of the central Life is formed” (TCF 508)







# Bubbles of Koilon are created by Divine Will

“In Theosophical teachings, particularly as described in the book "Occult Chemistry" by Annie Besant and Charles Leadbeater, "bubbles of Koilon" refer to the fundamental, primordial units that form the basis of all physical matter. Koilon itself is conceptualized as the ultimate aether or dense, all-pervading substance filling the universe—essentially the "stuff" of space. These bubbles are not made of Koilon but are voids or absences within it, like holes punched in an otherwise continuous medium. Just as bubbles in water are empty spaces surrounded by liquid, these are spherical emptinesses in Koilon, representing the smallest building blocks of reality at the sub-atomic level.

According to this esoteric model, derived from clairvoyant investigations in the late 19th and early 20th centuries, the bubbles are created by the divine will (often termed the "Logos") and are arranged in spiral formations—typically seven bubbles per spiral coil. They serve as the foundation for higher structures: vortices in the aether draw in groups of these bubbles (e.g., 49 per vortex) to form "ultimate atoms" or sub-atomic particles, which then aggregate into chemical elements and all manifest matter. The movement of these bubbles through the resistant Koilon is said to produce inertia, explaining why matter has mass and resists motion.

This concept predates modern quantum physics but has been retrospectively linked to ideas like quantum foam or vacuum fluctuations, as noted in some discussions tying it to Helena Blavatsky's earlier Theosophical writings around 1880. In the Theosophical cosmology, before the formation of a solar system or cosmic plane, the universe consisted solely of these atomic bubbles in Koilon, which were then organized into more complex forms.” (GROK)

# The Divine Anu

**"The Anu has, as observed so far - three proper motions, i.e. motions of its own, independent of any imposed upon it from outside. It turns incessantly upon its own axis, spinning like a top; it describes a small circle; it has a regular pulsation, a contraction and expansion, like the pulsation of the heart. When a force is brought to bear upon it, it dances up and down, flings itself wildly from side to side, performs the most astonishing and rapid gyrations, but the three fundamental motions incessantly persist. If it be made to vibrate, as a whole, at the rate which gives any one of the seven colours, the whorl belonging to that colour glows out brilliantly. An electric current brought to bear upon the Anu checks their proper motions, i.e. render them slower; the Anu exposed to it arrange themselves in parallel lines, and in each line the heart shaped depression receives the flow, which passes out through the apex into the depression of the next, and so on. The Anu always set themselves to the current". (Charles Leadbeater)**

## The Concept of Koilon

**Their is not such a concept in the occidental thought. However an aspect of this essential concept is understood by modern science as the "void". Seen with etheric perceptiveness, the Anu exists in an ocean of undifferentiated substance, which properties are infinite elasticity and density. In this unknown substance which forms an unbreakable whole, the infinite power called "Fohat" by the theosophists digs holes in this primordial matrix. The latter arrange themselves in a double spiral movement to create the spirillae of the very first particle, Anu. (Quotation: Occult chemistry, p. 16-17 ☺)**

The background is a dark, almost black, space filled with vibrant, ethereal energy. Swirling, glowing lines in shades of purple, magenta, and pink create a sense of dynamic movement. A bright, yellowish-white point of light is visible near the center, surrounded by concentric, glowing rings and radiating beams of light. The overall effect is one of cosmic power and spiritual energy.

**“Purpose is the magnetised line along  
which the Fire may travel”**

**Shamballa**

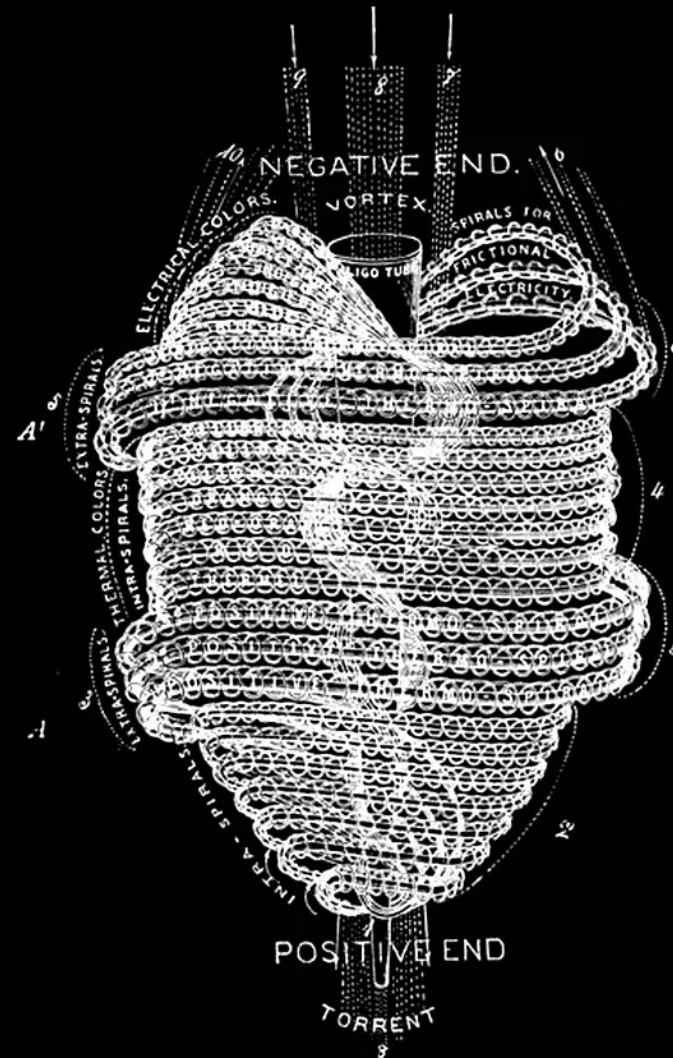
# Final combustion or disintegration

Final combustion or disintegration, when the fires latent and radiatory have achieved a specific stage. This is the secret of final obscurity and of pralaya, but cannot be dissociated from the two other factors of solar and electric fire.

4. Absorption, through that expression which is seen in all whirling spheres of atomic matter at whichever surface in the sphere corresponds to the point called in a planet the North Pole. Some idea of the intention that I seek to convey may be grasped by a study of the atom as portrayed in Babbitt's "Principles of Light and Colour," and later in Mrs. Besant's "Occult Chemistry." This depression is produced by radiations which proceed counter to the rotations of the sphere and pass down from the north southwards to a midway point. From there they tend to increase the latent heat, to produce added momentum and to give specific quality according to the source from which the radiation comes. This absorption of extra-spheroidal emanation is the secret of the dependence of one sphere upon another, and has its correspondence in the cycling of a ray through any plane sphere. Every atom, though termed spheroidal, is more accurately a sphere slightly depressed at one location, [Page 156] that location being the place through which flows the force which animates the matter of the sphere. This is true of all spheres, from the solar down to the atom of matter that we call the cell in the body physical. Through the depression in the physical atom flows the vitalising force from without. Every atom is both positive and negative; it is receptive or negative where the inflowing force is concerned, and positive or radiatory where its own emanations are concerned, and in connection with its effect upon its environment. (TCF 155-6)

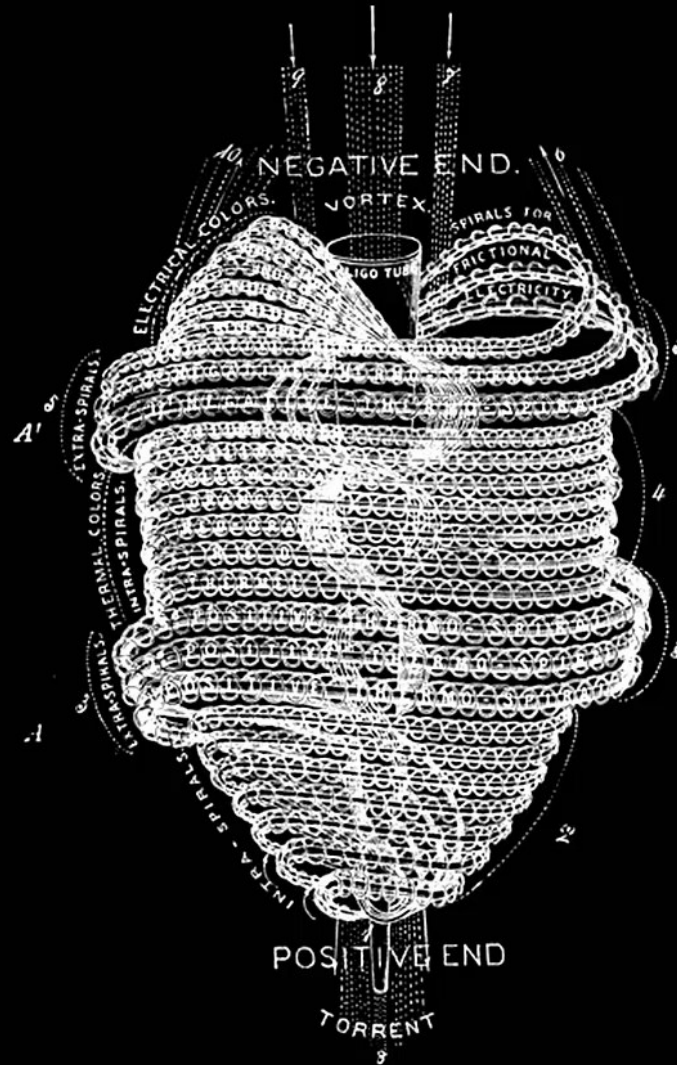


# Babbitt's Ultimate Atom



## The Divine ANU

# Babbitt's Ultimate Atom



The Divine ANU

# { IDEA } VISUALIZATION

IN COLLABORATION WITH

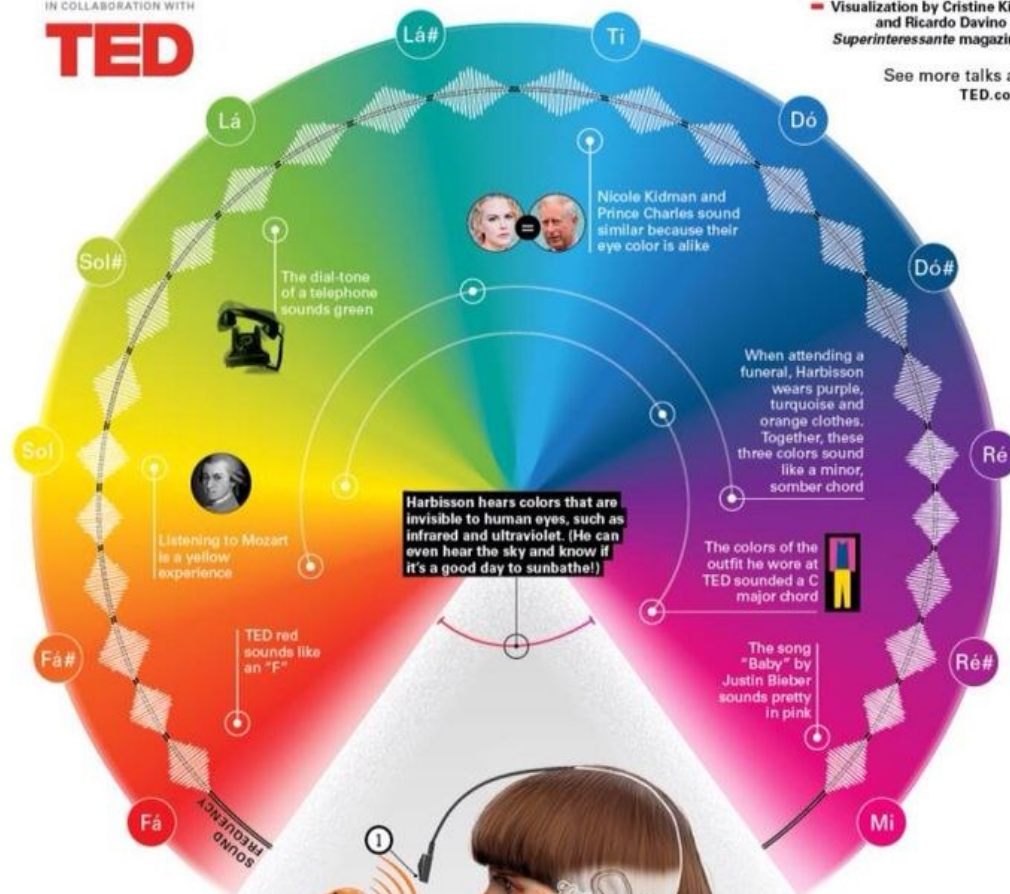
**TED**

## The sound of colors

In his talk at TEDGlobal 2012, colorblind artist Neil Harbisson delighted the audience with his brightly colored outfit, his quirky personality, and his eyeborg — a device implanted in Harbisson's head that lets him hear a rainbow of color. Instead of seeing a world in grayscale, he can listen to the audible frequencies transmitted by the colors in faces, paintings, even the weather. Step inside the mind of Neil's symphony of color.

Visualization by Cristine Kist and Ricardo Davino of *Superinteressante* magazine

See more talks at:  
[TED.com](http://TED.com)



### THE EYEBORG

Understand how the device implanted in Neil's head transforms color into sound.

1 A sensor detects the frequency of the color in front of Harbisson and transmits it through a chip installed on the back of his head.



2 The chip converts the colors into sound waves. Each color corresponds to a musical note.

3 These sound waves travel through the skull using bone conduction and arrive at Harbisson's auditory system.