

Ray 1 Soul/Personality Expressions

Ray 1 Soul, Ray 2 Personality

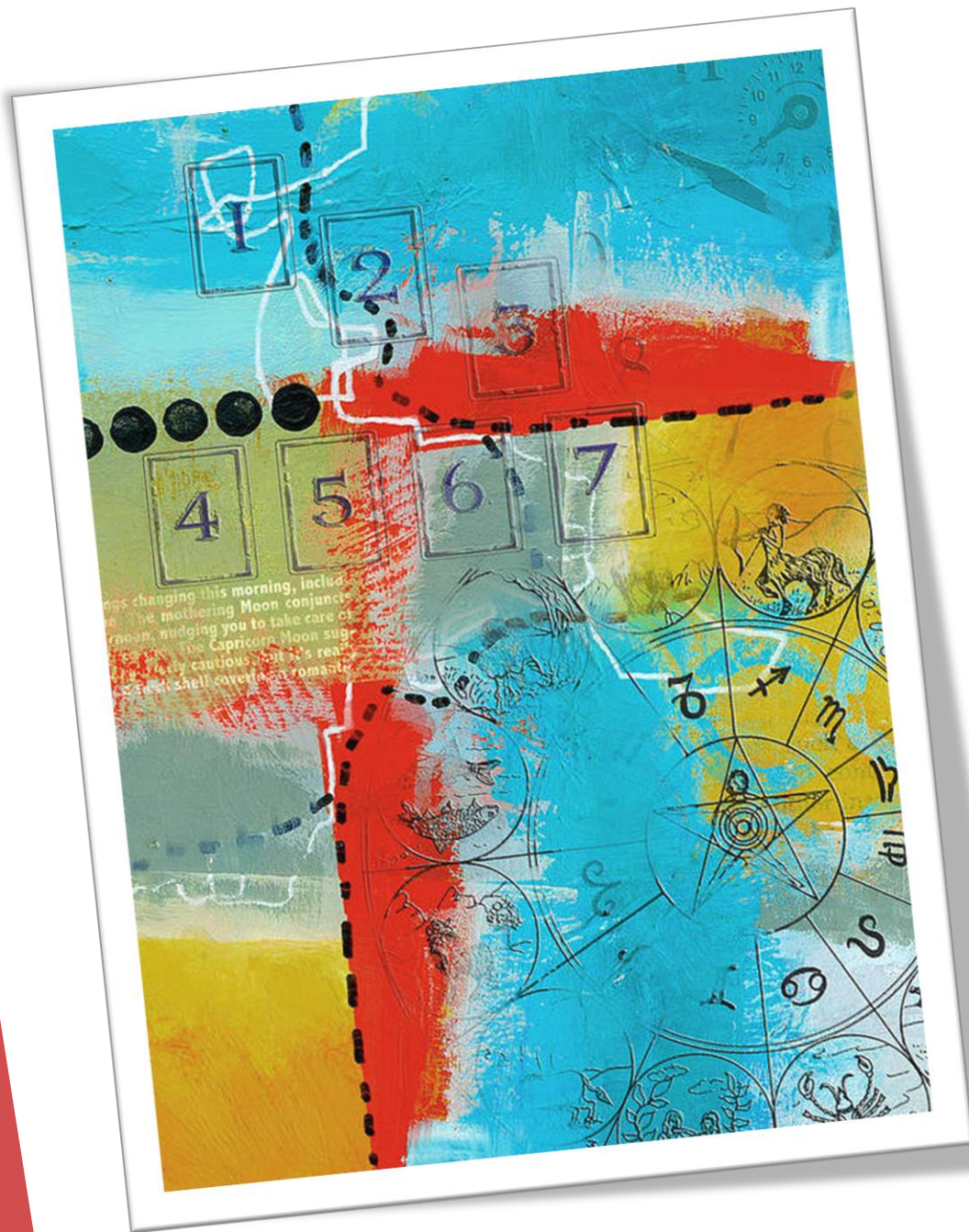
Ray 1 Soul, Ray 3 Personality

Ray 1 Soul, Ray 4 Personality

Ray 1 Soul, Ray 5 Personality

Ray 1 Soul, Ray 6 Personality

Ray 1 Soul, Ray 7 Personality



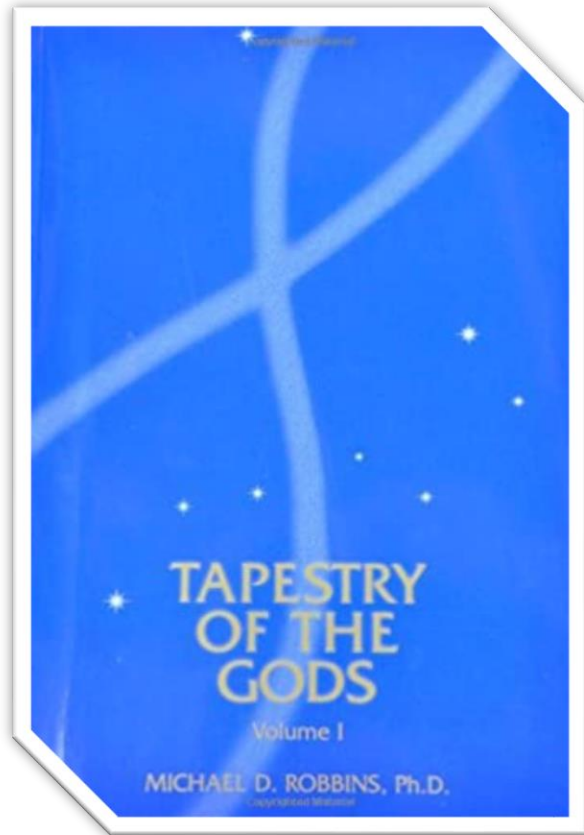
- Identical soul and personality rays rarely occur, and then only in advanced disciples or initiates
- So we will only be exploring six personality expressions in relation to each of the Soul Rays this series
- None of DK's disciples had the same ray on both the soul and personality

There are many ways of thinking about how a particular Soul and Personality Ray interact

The purpose in this series of webinars on the soul-personality combinations of each of the 7 Rays is to help you begin the process of interpreting your Personal Identity Profile from the point of view of your two most important vehicles.



For more extensive information on how the Soul and Personality Rays interact, please see *Tapestry of the Gods, Volume II*, by Michael D. Robbins available in pdf download:
<http://makara.us/04mdr/01writing/02tg/tapestry2.pdf>



For further information on the Personal Identity Profile (PIP), you can take the PIP III test here:
<https://www.moryafederation.com/pipiii-is-here-2-2/>

Ray 1 – Will and Power



Word of Power: I assert the fact.

Ray 1 Type A – Will



Ray 1 Type B – Power



You Might be a Ray 1 Soul if . . .

You have deep spiritual humility because you sense the vastness of the One

You have undeviating fulfillment of divine law, purpose and intention

You show spiritual impersonality and divine indifference

You are willing to take drastic action for the sake of preserving spiritual values

You have keen understanding of principles and priorities

You have a bold and clear enunciation of the facts as perceived

You have the power to take unilateral action for the sake of spiritual values

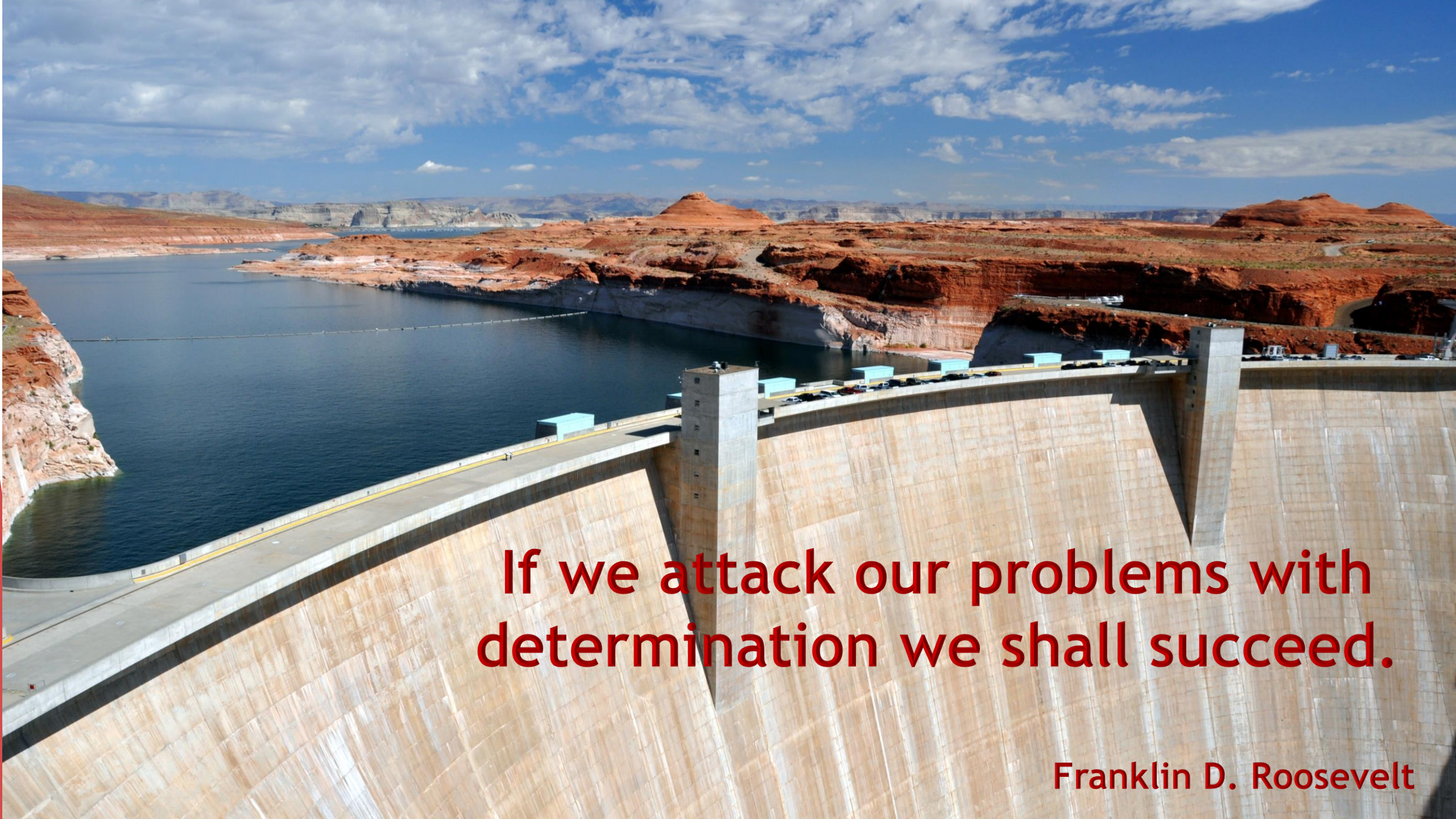
You have the clear-sighted capacity for immediate action

You have spiritual assuredness, selfless spiritual will and persist as a spiritual being
(you realize the Oneness of spirit)



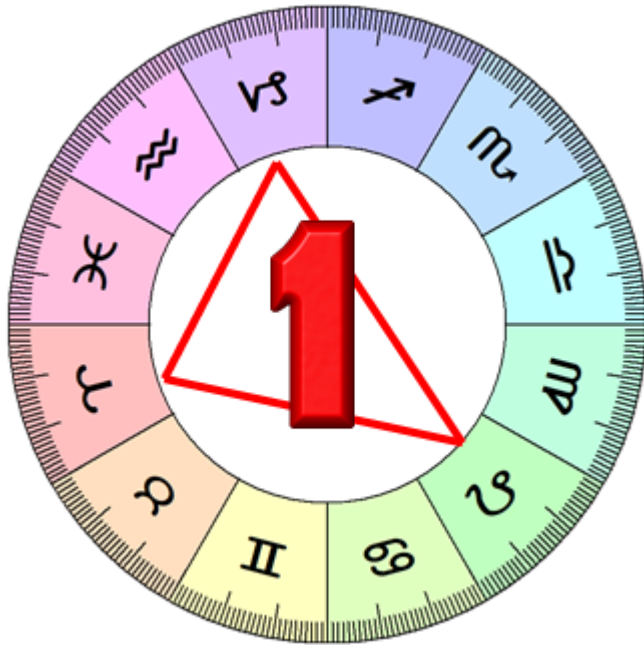
Vocational Indications:
Positions of leadership and authority. Chief executive officers, leaders in government and politics, the military and law enforcement, etc.





If we attack our problems with determination we shall succeed.

Franklin D. Roosevelt



It's a struggle between the Ray 1 Soul's need to express spiritual detachment. . . counteracted by the Ray 2 Personality's need to express personal attachment.



Spiritual Will versus Personal Love

Spiritual assertiveness vs placid reliance on personal magnetism

Ease expelling what is spiritually worthless vs retention of much that is worthless

Attitude of spiritual centralization vs loss of center due to excessive number of ties

Easily achieved spiritual impersonality vs tendency to be too close and too personal

Ray 1 Soul/Ray 2 Personality Integration

- It's the task of the R1 Soul to impose its well-developed impersonality/detachment on a personality that tends to remain attached to others.
 - ❖ Soul seeks to liberate the personality from the many nonessentials it has surrounded itself, with that it has accumulated through a personal use of the Law of Attraction.
 - ❖ Soul will seeks to destroy the bondage of strictly personal love, personal popularity, personal magnetism/attraction; instead it directs personality towards a soul-inspired goal.
 - ❖ Soul must force personality to act now, rather than wait until studious inquiry is satisfied.
 - ❖ Faced with the increasing personal tempo demanded by the soul, it propels the personality forward regardless of its tendency to attach, accumulate and cling.
 - ❖ The soul must destroy what the personality (for its own selfish sake) seeks to preserve.
- The R2 personality discovers that it can no longer preserve *all* its cherished comforts
 - ❖ Only retaining those which conform to Divine Purpose.
 - ❖ The good opinion of others must be sacrificed; pain of wrenching detachment endured.
 - ❖ An agreeable but spiritually useless personal softness/sensitivity can no longer remain.
 - ❖ A new spiritual hardness must enter the life so dynamic soul will can be accomplished.

Integration Formulae for Rays 1 and 2: *Centralized Inclusion*



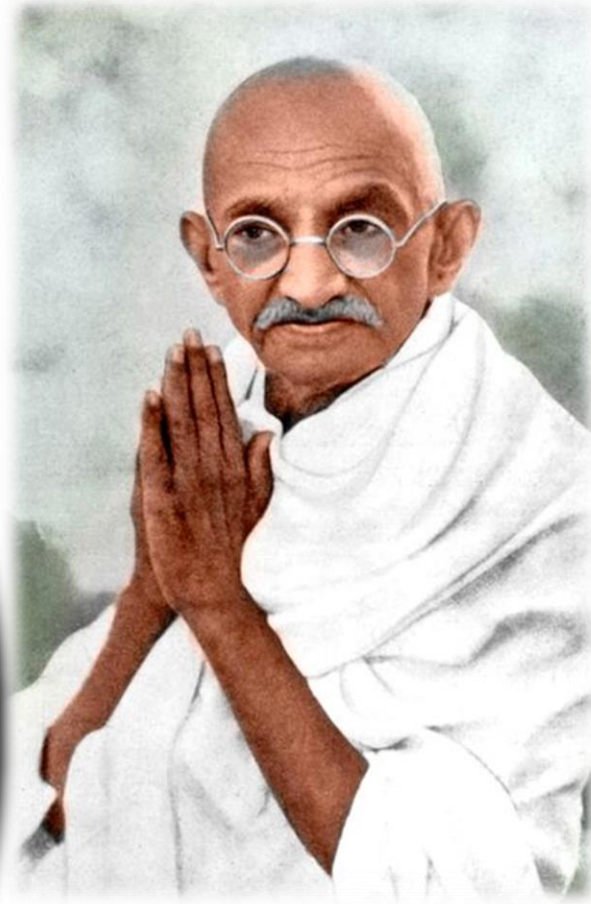
Inclusiveness is the Ray 1 formula;
Centralization is the Ray 2 formula.
The composite effect for soul and
personality integration is the centered
attitude of the outer man which
complements the attitude of
inclusiveness (which it is the will of the
inner man to cultivate).

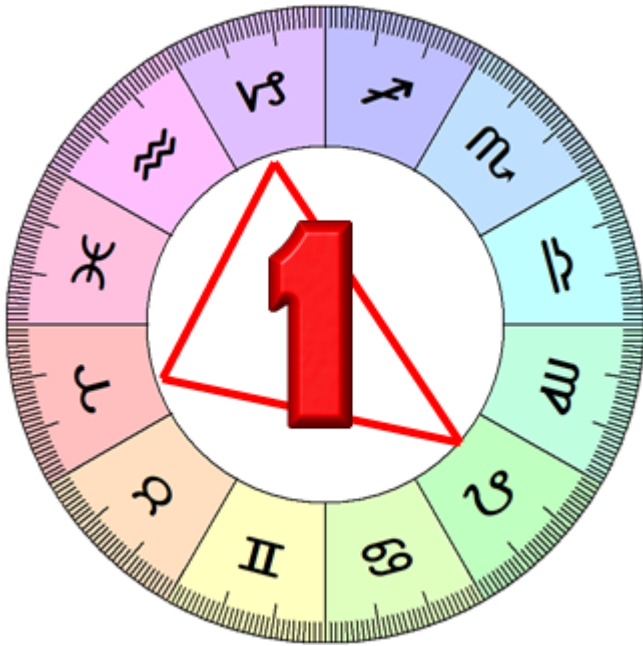
*A spiritual portrait of Assagioli
by Olga Fröbe-Kapteyn*

Ideal Expression of a R1 Soul and R2 Personality

- Ideally, dynamic spiritual will is expressed lovingly, with wise understanding.
 - ❖ The tendency towards detachment masters the tendency towards attachment, and yet, attachment is used effectively.
 - ❖ The law always prevails but is mercifully applied.
 - ❖ Truth is never compromised but is expressed with tact.
 - ❖ The individual can have a strong attitude of impersonality and yet be well-endowed with the personal touch—this is the art of being impersonally personal.
 - ❖ The iron fist in the velvet glove.

Ray 1 Soul, Ray 2 Personality Examples





It's a struggle between the Ray 1 Soul's intention to uphold the highest principles/values . . . counteracted by the Ray 3 Personality's materialistic and intellectual distortion of those principles/values and misuse of human intelligence.



Spiritual Will/Being vs Personal Doing/Intelligence

Realization of the oneness of spirit vs preoccupation the many-ness of form

Direct perception through straight knowledge vs entrapment in the convoluted, reasoning mind

Spontaneous, exuberant selfless action vs calculated, premeditated action for personal profit

Power to focus with dynamic intensity vs difficulty achieving focus due to distracted diversification

Great capacity for spiritual abstraction vs debilitating complexity and paralysis of too many perspectives

Ray 1 Soul/Ray 3 Personality Integration

- It's the task of the R1 Soul to straighten out the devious, complicated maneuvering common to the R3 personality.
 - ❖ The soul seeks to impose its firm spiritual intention on a very mobile personality which has many plans and pursuits of its own.
 - ❖ Guiding this personality in a straight line, preventing sidetracking, unnecessary diversification will be the soul's formidable concern.
 - ❖ It must force the personality to act in accordance with spiritual will, to recognize the singleness of soul purpose, and to avoid the scattering of its energies.
 - ❖ The soul must impose deliberate sacrifice and grounded commitment upon a personality highly adept at evading such requirements.
- For integration to be successful, the personality must learn to give up *its* plans, *its* schemes, *its* many lines of interest and activity.
 - ❖ Under the pressure of the soul, the personality learns that its customary busy, peripheral excursions must be severely curtailed.
 - ❖ A new clarity, straightness and simplicity must enter the life.

Integration Formulae for Rays 1 and 3: *Still Inclusion*

Inclusiveness is the Ray 1 formula; *Stillness* is the Ray 3 formula. The composite effect for soul and personality integration provides the stillness which fosters the inclusive attitude

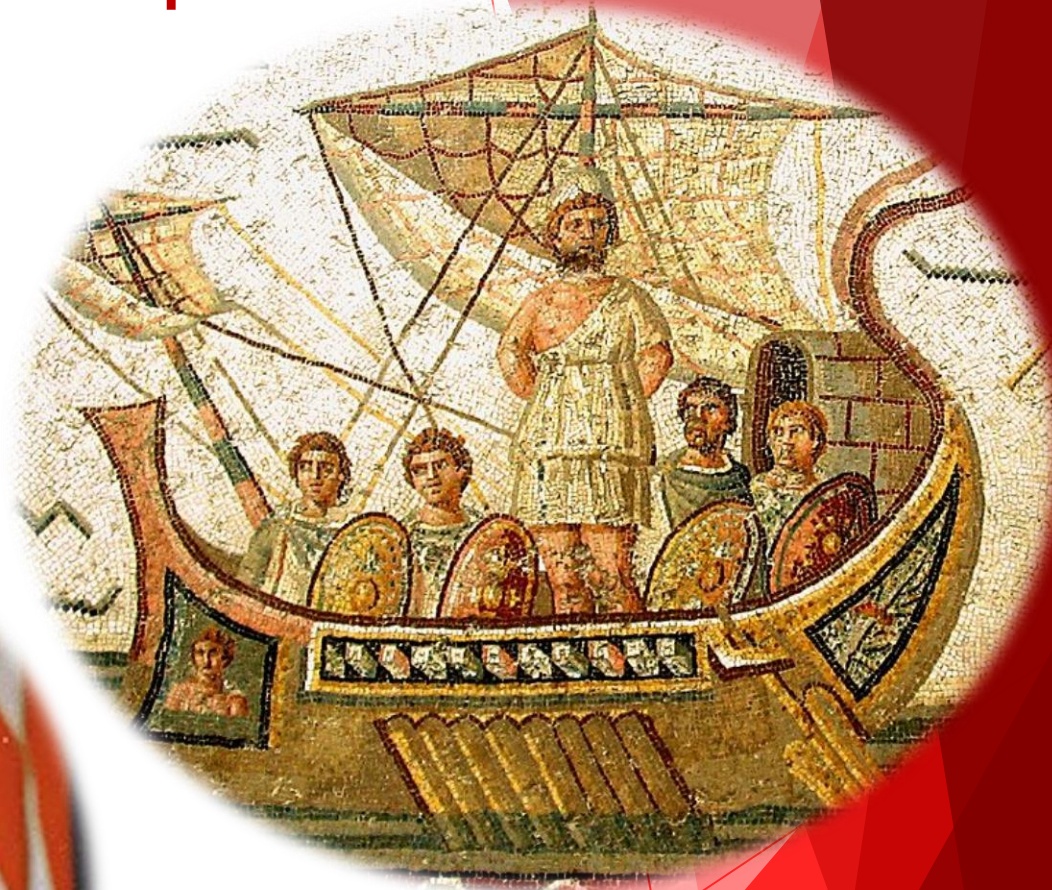
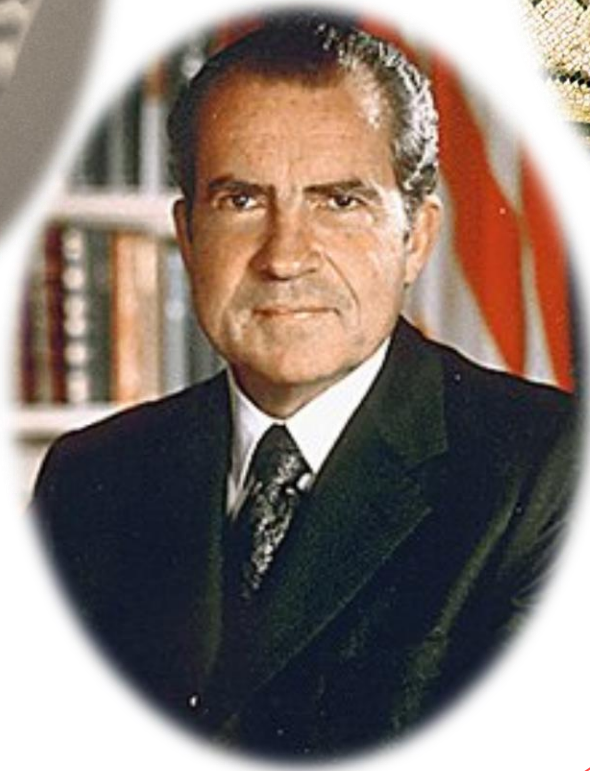
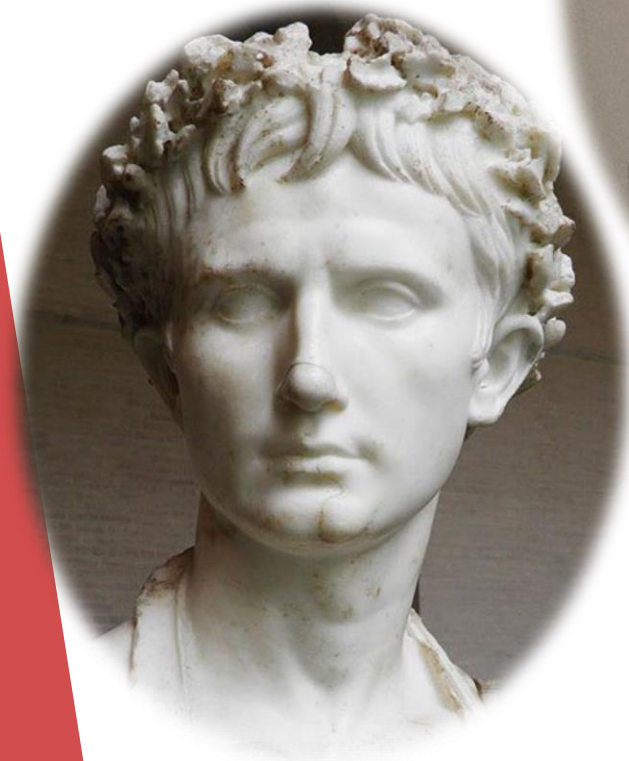


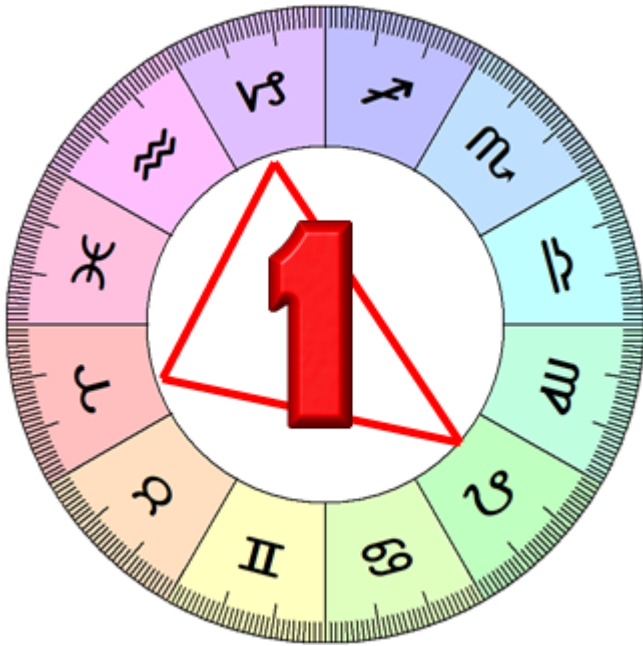
The Divine Breath
by Olga Fröbe-Kapteyn

Ideal Expression of a R1 Soul and R3 Personality

- Ideally, dynamic spiritual will is expressed with creative intelligence/adaptability.
 - ❖ The purposive attitude masters the tendency towards dispersion/busyness/diffusion
 - ❖ Yet becomes all the more effective through versatility and expression through many lines of activity.
 - ❖ Powerful intentions are executed adroitly, with strategic skill.
 - ❖ The preservation of power is served by the ability to plan.
 - ❖ Survival and victory are achieved through intelligent change.

Ray 1 Soul, Ray 3 Personality Examples





It's a struggle between the Ray 1 Soul's refusal to compromise on spiritual principle . . . counteracted by the Ray 4 Personality's over-eagerness for compromise of a weak/vacillating nature that can't hold to principles in the face of strenuous opposition.



Spiritual unity vs personal duality

Firm decisiveness/unwavering spiritual intent vs indecisiveness/debilitating vacillation

Self-confidence/firm sense of identity vs lack of self-confidence/constantly shifting psychological attitudes

Power to take sides for preservation of spiritual values vs refusal to take sides, thus avoiding spiritual commitment

Complete freedom from worry vs tendency to worry, fret and chafe

Ray 1 Soul/Ray 4 Personality Integration

- It's the task of the R1 Soul to desensitize the over-responsive, reactive R4 personality.
 - ❖ Soul seeks to impose its peaceful, silent will upon a personality embroiled in turmoil.
 - ❖ The soul has firm resolution and must stem the personality's tendency to vacillation.
 - ❖ Because very little will be accomplished otherwise, the soul must step in and settle what are often self-destructive, self-defeating personality conflicts.
 - ❖ Then it can direct the personality to steadfast achievement of soul objectives.
- The soul can and must bring *stability* to this most unstable of personality types.
 - ❖ When the personality is purposelessly conflicted, the soul must restore balance and peace.
 - ❖ When the personality accommodates itself too readily, the soul must instigate disruption, destroying equilibrium because pleasing tranquility serves no evolutionary purpose
- The R4 personality will be forced to take a stand, and not always a pleasant one.
 - ❖ This person is used to sitting on the fence—but soul insists the personality go all the way.
 - ❖ Forced off the fence, personality learns that right is right even if personal feelings get hurt.

Integration Formulae for Rays 1 and 4: *Steadfast Inclusion*



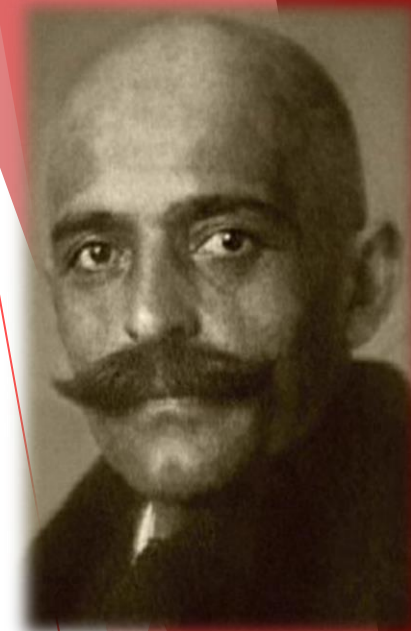
Meditation
by Olga Fröbe-Kapteyn

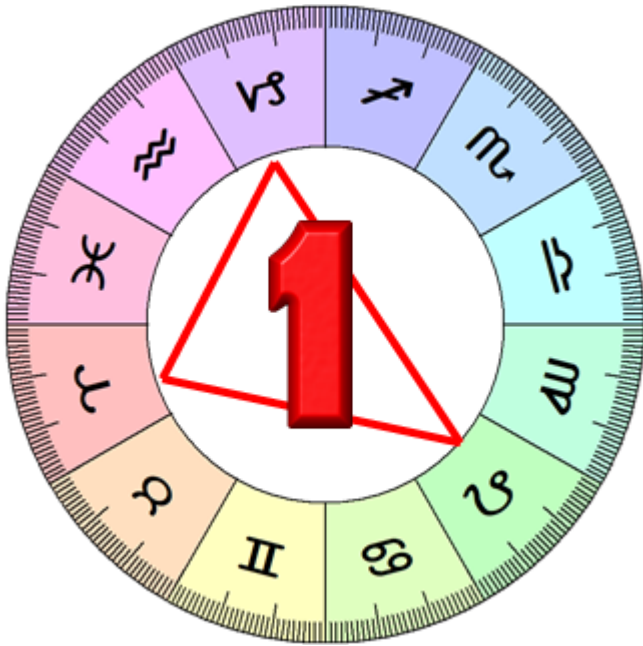
Inclusiveness is the Ray 1 formula;
Steadfastness is the Ray 4 formula.
The composite effect for soul and
personality integration is the
steadfastness of the personal
consciousness which fosters spiritual
inclusiveness.

Ideal Expression of a R1 Soul and R4 Personality

- Ideally, dynamic will is expressed harmoniously.
 - ❖ A firm attitude masters the tendency to compromise for the sake of comfort.
 - ❖ Purposeful self-discipline controls the tendency to waste energy in purposeless combat.
 - ❖ The achievement of unwavering intentions is furthered by the ability to establish rapport, relate effectively and compromise when needed.
 - ❖ But spiritual purpose is always preserved, and principles are not compromised or weakened.
 - ❖ This combination expresses the union of power and aesthetic sensibility: for instance—the ruler who is a patron of the arts.
 - ❖ The peace-maker.

Ray 1 Soul, Ray 4 Personality Examples





It's a struggle between the Ray 1 Soul's vision of synthesis based on identification with the One Life . . . counteracted by the Ray 5 Personality's determination to divide the great synthesis through mental process of analysis where the subject/object remain forever distinct.



Ray 1 Soul and a Ray 5 Personality

Spiritual synthesis vs preoccupation with concrete analysis (little capacity for perceiving wholeness)

Vision in vast spiritual wholes vs focus on disconnected parts

Overcoming of all divisions vs inability to see beyond the illusory separations and cleavages

Emphasis on great spiritual essentials vs engrossed in the details and minutiae of the world of matter

Irresistible spiritual dynamism vs plodding, linear activity

Ray 1 Soul/Ray 5 Personality Integration

- It's the task of the R1 soul to broaden the R5 personality and bring it to the point where it can see things in a broader perspective.
 - ❖ Soul wishes to press forward according to its keen sense of purpose, but the personality is caught up in the examination of its narrow field of study.
- Soul exerts its will dynamically, but personality prefers a slow, cautious approach.
 - ❖ The soul mobilizes to prevent the personality from becoming overly-fascinated with what is irrelevant to soul intention.
 - ❖ The soul urges the personality forward, forcing a disengagement from a too time-consuming preoccupation with the examination of form.
- Under the impress of the soul, the personality begins to realize that a strictly mental, dispassionate, experimental approach will have to be modified and expanded.
 - ❖ Only then can the inner demand be met and the integration with Higher Self succeed.
 - ❖ This type of personality will have to learn to actually *embody* that which its mind *knows*.

Integration Formulae for Rays 1 and 5:

Detached Inclusion

Inclusiveness is the Ray 1 formula;
Detachment is the Ray 5 formula.
The composite effect for soul and
personality integration is the
detachment of the outer man from
the interest in material form,
contributing to the development of
spiritual inclusiveness in the
consciousness of the inner man.

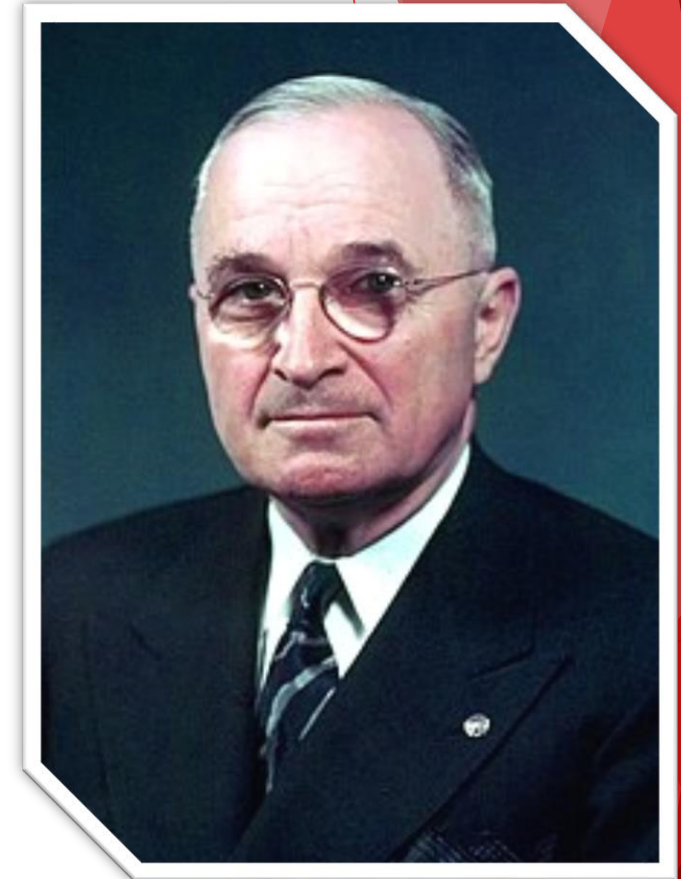
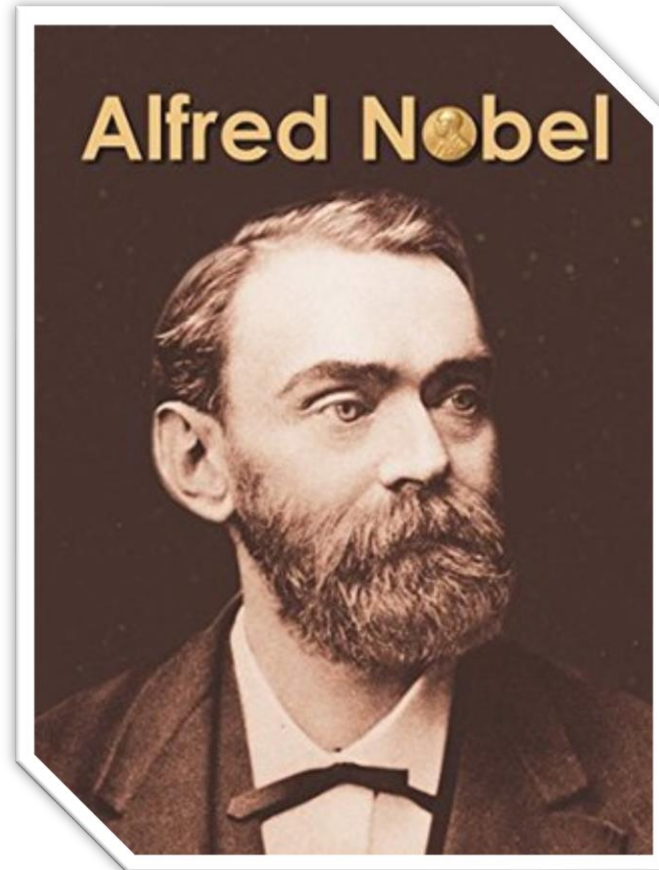
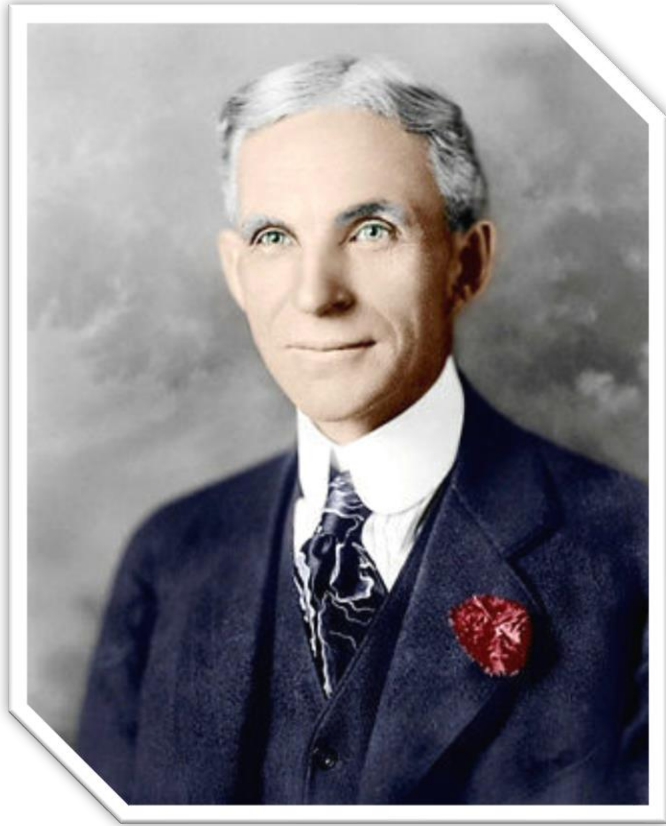


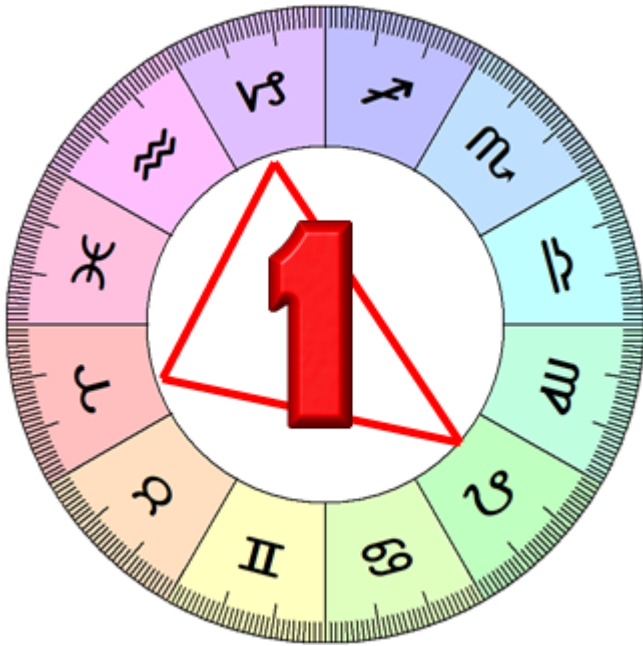
The Mystery of Life
by Olga Fröbe-Kapteyn

Ideal Expression of a R1 Soul and R5 Personality

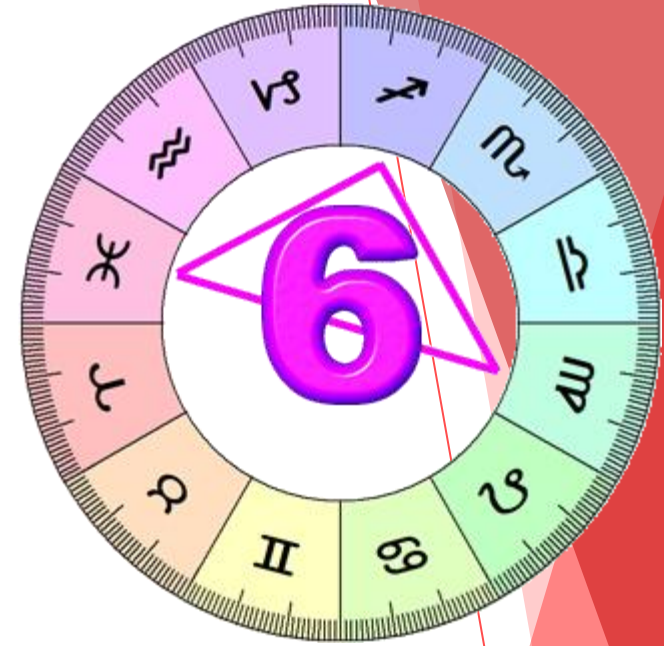
- Dynamic will is expressed through a mastery of concrete fact, and a practical command of material energies.
 - ❖ The ability to rule and govern is served by an utterly clear comprehension of technical details, so that the most well-informed decisions can be made.
 - ❖ The leader with true common sense.
 - ❖ The urge toward power is served by technology.
 - ❖ Ability to see the big picture masters the tendency to specialize and get bogged down in the details of form.

Ray 1 Soul, Ray 5 Personality Examples





It's a struggle between the Ray 1 Soul's firm, unemotional spiritual will to uphold divine law . . . counteracted by the Ray 6 Personality's passionately emotional pursuit of fanatical personal desire

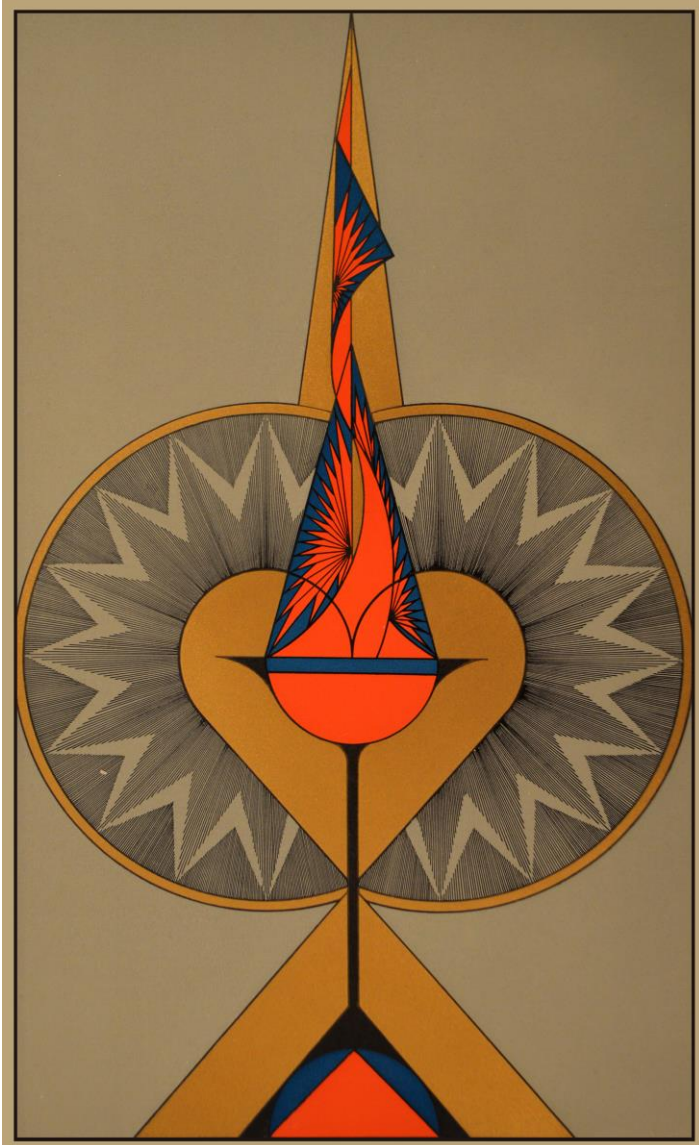


Spiritual will vs personal desire
The soul-inspired leader vs the personally excited follower
Spiritual strength/self-reliance vs personal dependency/overly reliant on others
Divine indifference vs anxiety and over-concern because of personal fears/attachments
Wide, synthetic breadth of vision vs a passionately narrow vision

Ray 1 Soul/Ray 6 Personality Integration

- It's the task of the soul to strengthen the sense of centralization in the personality.
 - ❖ The first ray soul knows *itself* as the source of unfailing strength, whereas the personality almost invariably relies upon others (human or divine) for its strength.
 - ❖ The problem centers upon the contrast between being inner-directed (R1), or outer-directed (R6)—being self-directed (R1), or other-directed (R6).
- Soul must discipline the emotional excesses of personality, widen its point of view.
 - ❖ The soul imposes a severe form of self-control, teaching the personality that it must function according to impartial law rather than emotional preference.
 - ❖ A vision of the big picture and the true spiritual values is imposed by the soul.
 - ❖ This is meant to overcome the narrow, fanatical adherence to limited devotion/ideals.
- Larger issues/responsibilities as understood by the soul begin to dawn.
 - ❖ It seeks to look to *itself* as a source of power and energy, and not only to others upon whom it has mistakenly projected the essence of its own strength.
 - ❖ It seeks to dedicate itself only to that which is truly important for the welfare of the whole and for the execution of the Divine Will (not to that which is merely exciting).
 - ❖ Personality, beginning to fuse with soul, *devotes itself* to the greatest good.

Integration Formulae for Rays 1 and 6: *Restrained Inclusion*



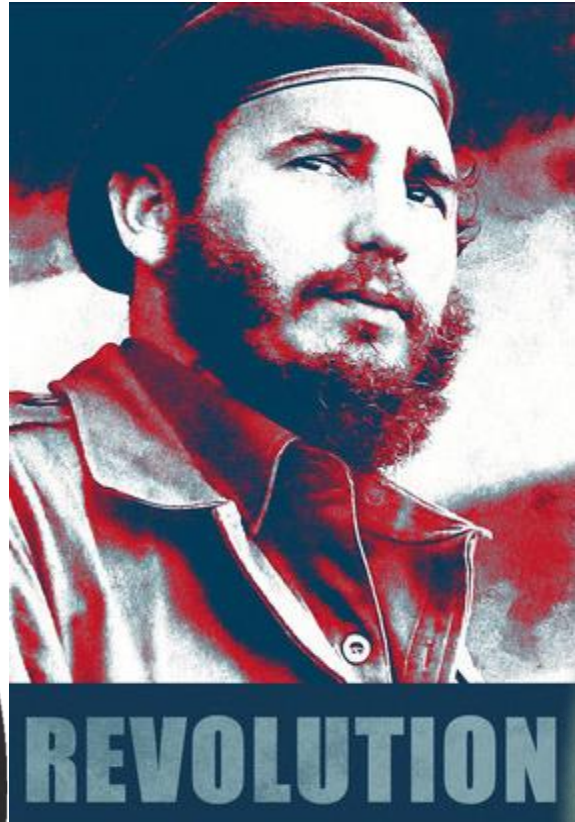
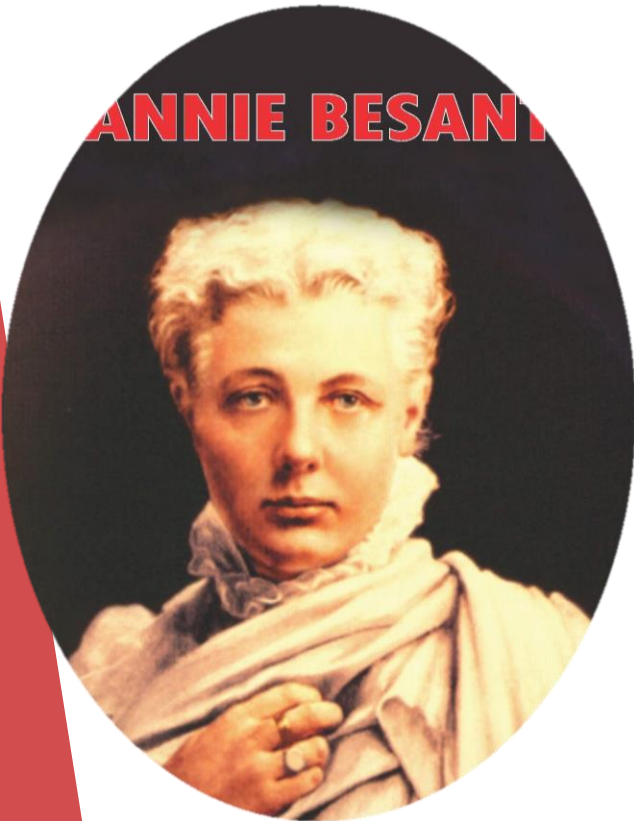
The Chalice in the Heart
by Olga Fröbe-Kapteyn

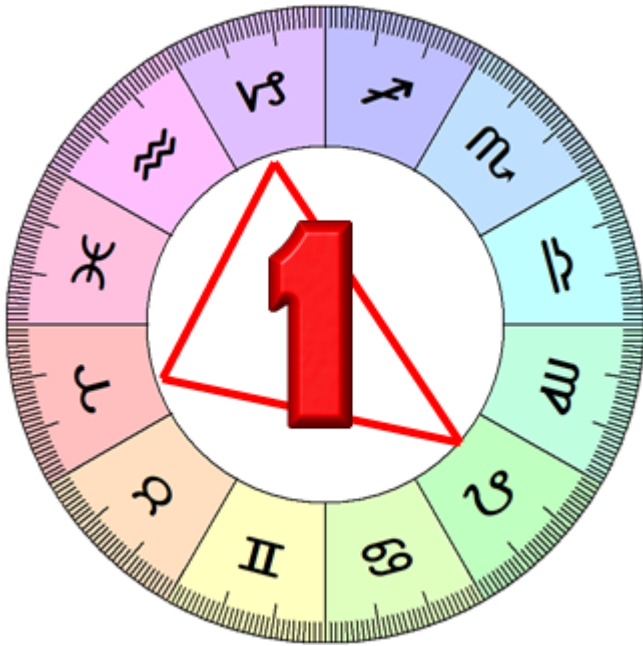
Inclusiveness is the Ray 1 formula;
Restraint is the Ray 6 formula.
The composite effect for soul and
personality integration is the
quality of peacefully standing still
at the Center; the personal
restraint that fosters spiritual
inclusiveness.

Ideal Expression of a R1 Soul and R6 Personality

- Ideally, dynamic will is expressed with one-pointed ardor and fervent devotion.
 - ❖ Firmness, coolness and absolute self-control, master the tendency towards emotionalism and excessive zeal.
 - ❖ The highest purpose is upheld with no thought of compromise.
 - ❖ High-minded conviction is sustained with unshakable faith.
 - ❖ The goal is achieved at all costs. Impersonal self-sacrifice is ardently pursued.

Ray 1 Soul, Ray 6 Personality Examples





It's a struggle between the Ray 1 Soul's inherent freedom of spirit . . . counteracted by the Ray 7 Personality's subservience of the spirit to form



Unimpeachable spiritual authenticity vs loss of self through slavery to social conditioning
Soul-inspired liberation from form vs imprisonment within form/formalities
Dynamic spiritual initiatives vs overly cautious reliance on precedent
Commitment to spiritual essentials vs self-limiting concern for outer appearances
Shattering the prison of the spirit vs carefully building the prison of the spirit

Ray 1 Soul/Ray 7 Personality Integration

- It's the task of the R1 soul to shatter the many forms and patterns holding the R7 personality prisoner.
 - ❖ The soul seeks to impose a sweeping sense of divine freedom and unfettered individual will upon a personality which is habitually over-regulated, over-scheduled, overparticular, and over-attentive to the thousand-and-one petty details which distract it from the realization that form is essentially illusory.
- Rapid, direct action is a quality of the soul, but it is frustrated by the difficulty of breaking the well-established, self-protective rhythms of the personality.
 - ❖ The soul dares to renounce form and be free; the personality preserves its routines, saving itself from the terror of spontaneity and horror of an unconditioned act of will.
- At length the R7 personality (as it becomes a subray of the R1 soul) learns that there is no safety in form.
 - ❖ That its creations and constructs are meant to house or embody formless principles.
 - ❖ A well-ordered world designed strictly for personal safety and comfort, gives way to a well-ordered world designed to reflect, symbolize and contain Divine Purpose.

Integration Formulae for Rays 1 and 7: *Oriented Inclusion*

Inclusiveness is the Ray 1 formula;
Orientation is the Ray 7 formula.
The composite effect for soul and
personality integration the attentive
spiritual orientation that fosters an
understanding of the part which
everyone is to play within the
Divine Plan, as well as the loving,
synthetic will to embrace or include
the other players.

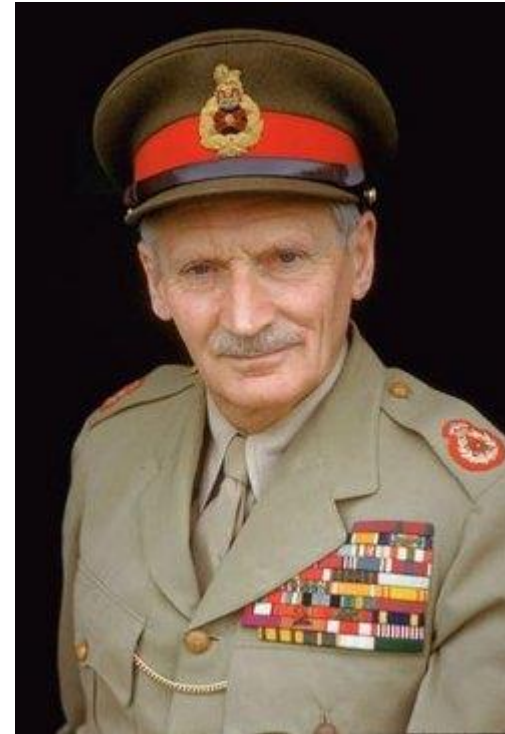
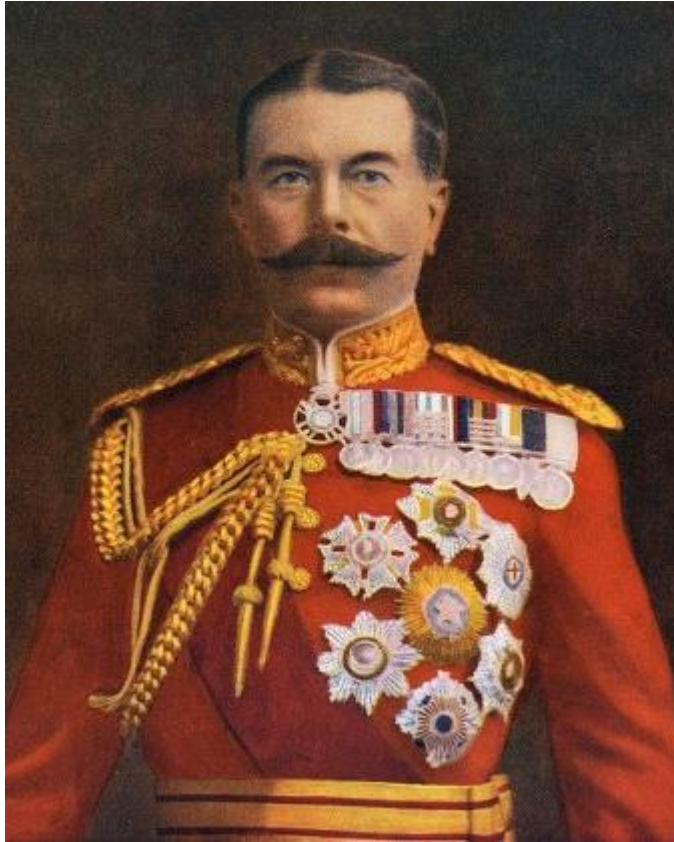


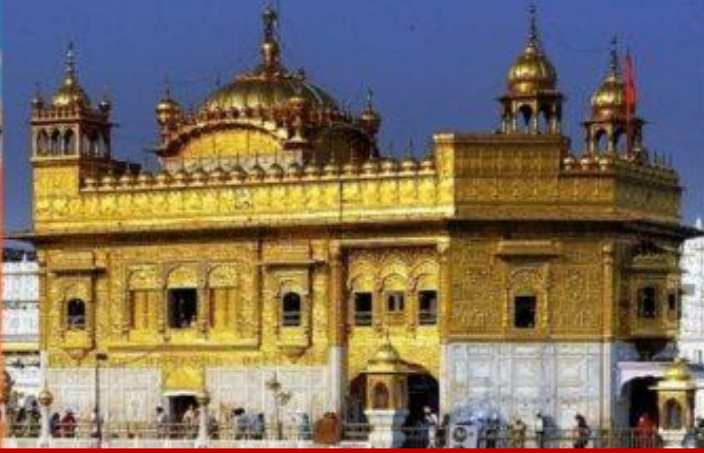
The Light of the Soul
by Olga Fröbe-Kapteyn

Ideal Expression of a R1 Soul and R7 Personality

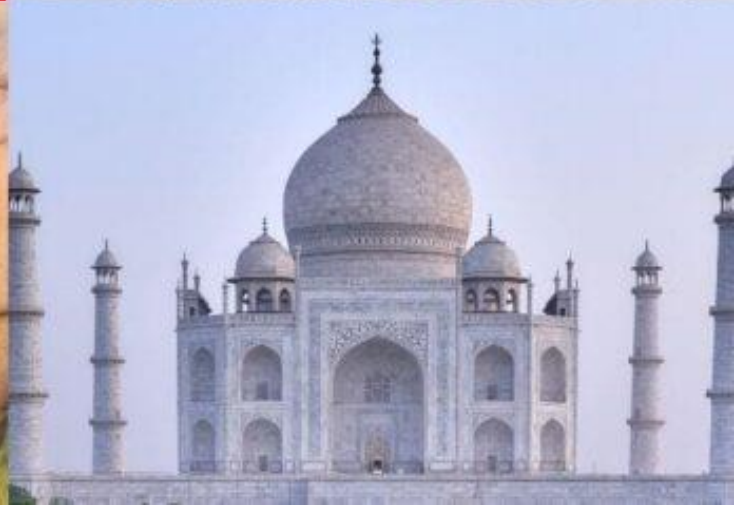
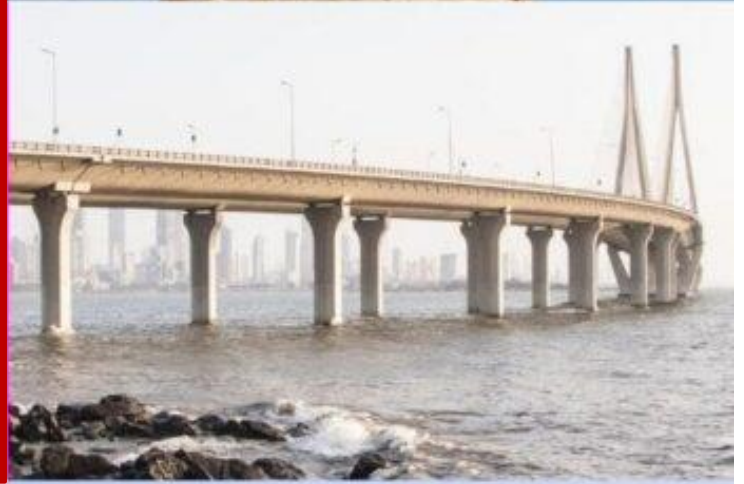
- Ideally, dynamic will is expressed rhythmically and appropriately, with complete regard for laws, rules and social conventions, and with exquisite timing.
 - ❖ The freedom and spontaneity of spirit master the tendency towards formalism and the habitual following of precedent.
 - ❖ Powerful intentions are perfectly and practically executed. Sweeping changes are skillfully administrated.
 - ❖ Pioneering initiatives are resourcefully structured and excellently organized.
 - ❖ The reformer; the practical revolutionary.


R1 Soul, Ray 7 Personality Examples





India





Our ability to reach unity in
diversity will be the beauty and
the test of our civilisation.

Mahatma Gandhi