

Ray 2 Soul/Personality Expressions

Ray 2 Soul, Ray 1 Personality

Ray 2 Soul, Ray 3 Personality

Ray 2 Soul, Ray 4 Personality

Ray 2 Soul, Ray 5 Personality

Ray 2 Soul, Ray 6 Personality

Ray 2 Soul, Ray 7 Personality

“When identified as a soul, look at your personality and try to determine what you see.”

Tapestry of the Gods, Vol II, p12



When thinking of the relationship between the soul and Personality Rays:

the soul can be considered the end
and the personality the means

The soul is the subject, quality or energy to be expressed

And the personality is the persona or mask, through which the expression occurs



Conversely, seek also to identify as a personality, and try to determine how you experience the voice of the soul.

What is its quality?

What is your particular manner of accepting or rejecting this voice?



Think about the rays as we discuss their characteristics and the various combinations.

Which rays appeal to you or do you resonate with most?

Which do you think is your soul ray (more selfless) or personality ray (more selfish).

When you begin to develop some clearer ideas regarding your soul and personality ray, focus on the information that describes the *ideal combination*.

Ray 2 – Love - Wisdom



Word of Power: I see the greatest Light.

Ray 2 Type A – Love

Loving-Understanding Emphasized.

This aspect of the second Ray is warm, magnetic, radiant and filled with compassion and loving-understanding.

Works through the power of pure, heart-felt love, healing and teaching through a deep sense of empathy and identification with others.

Associated with the archetype of the “savior.” The Christ is the embodiment of the love aspect of the second Ray.



Ray 2 Type B – Wisdom

Wisdom and Complete Understanding Emphasized.

Places a greater emphasis upon the mind and is more detached and less magnetic than Type A. Insists on complete, dispassionate understanding, may seem much colder than Type A, and may need to cultivate love, just as Type A needs to cultivate wisdom.

Associated with the archetype of the “guru.” The Buddha is the figure most associated with the wisdom aspect of R2..



You Might be a Ray 2 Soul if . . .

You strongly feel spiritual love and wisdom

You are inclined to pursue Divine Wisdom

You are filled with joy and spiritual positivity

You show soul-inspired restraint of passion and exhibit loving impersonality

You have an inner attitude of quiet faithfulness and spiritual loyalty

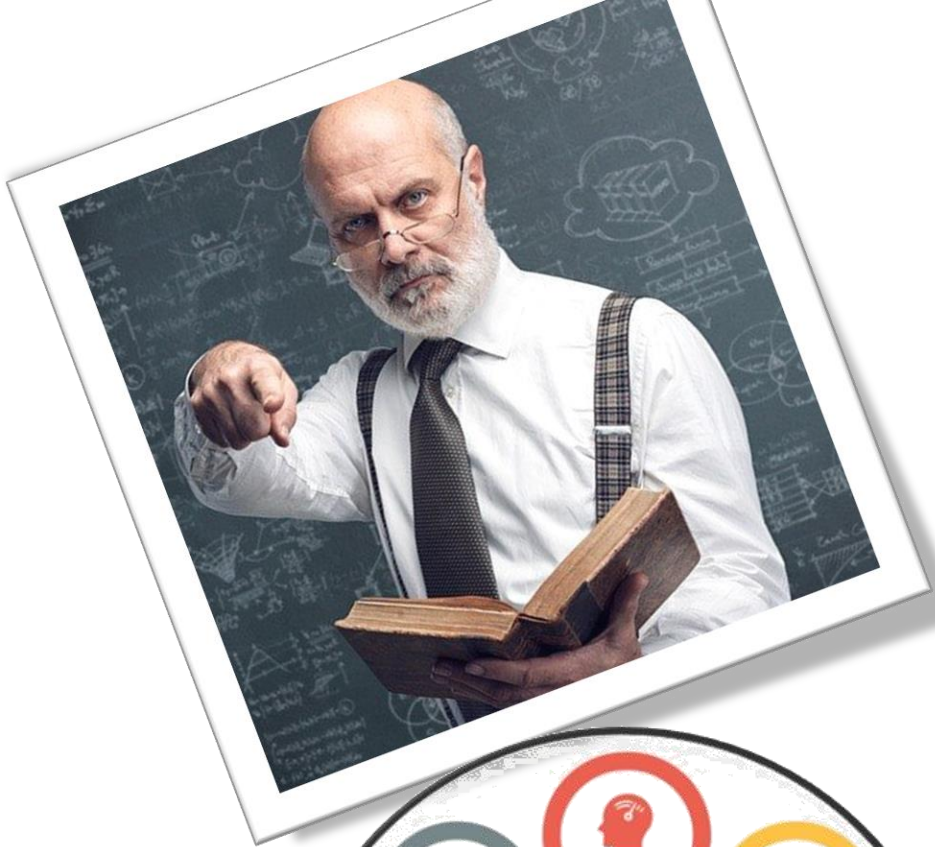
You have deep, empathic understanding; spiritual sensitivity and intuition

You exhibit kindness, long-suffering patience; gentleness and tact

You experience group love and cooperation

You act based on well considered options and profound thought

(the wise use of slow action)



Ray 2 Vocational Indications: Positions where love and a wise understanding of people are required.



Teaching, spiritual work, psychotherapy, human resources development, etc.

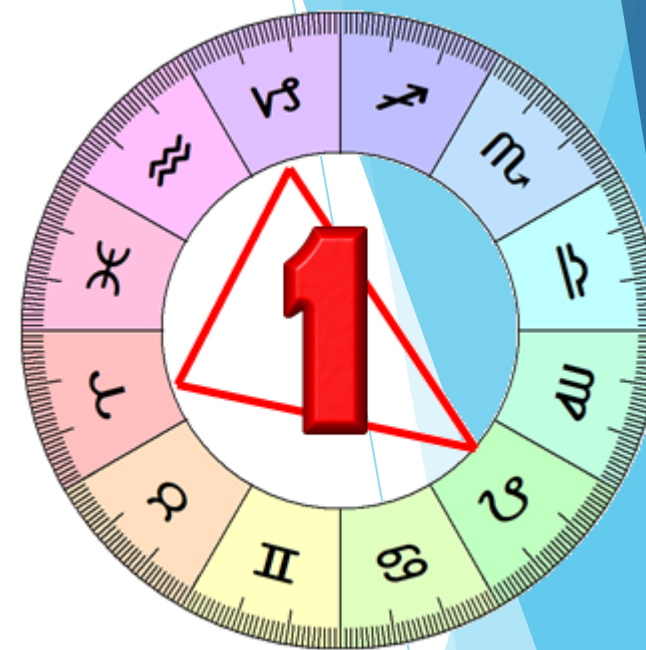


**You must enshrine in your hearts
the spiritual urge towards light
and love, Wisdom and Bliss!**

Sathya Sai Baba



It's a struggle between the Ray 2 Soul's need to express unconditional soul love and wisdom . . . counteracted by the Ray 1 Personality's urge to express personal will, regardless of destructive consequences.



Spiritual love and wisdom versus personal willfulness and aggression

Joy and spiritual positivity versus wrath and anger

Spiritual attachment to heart/soul of others versus cold detachment rebuffing others

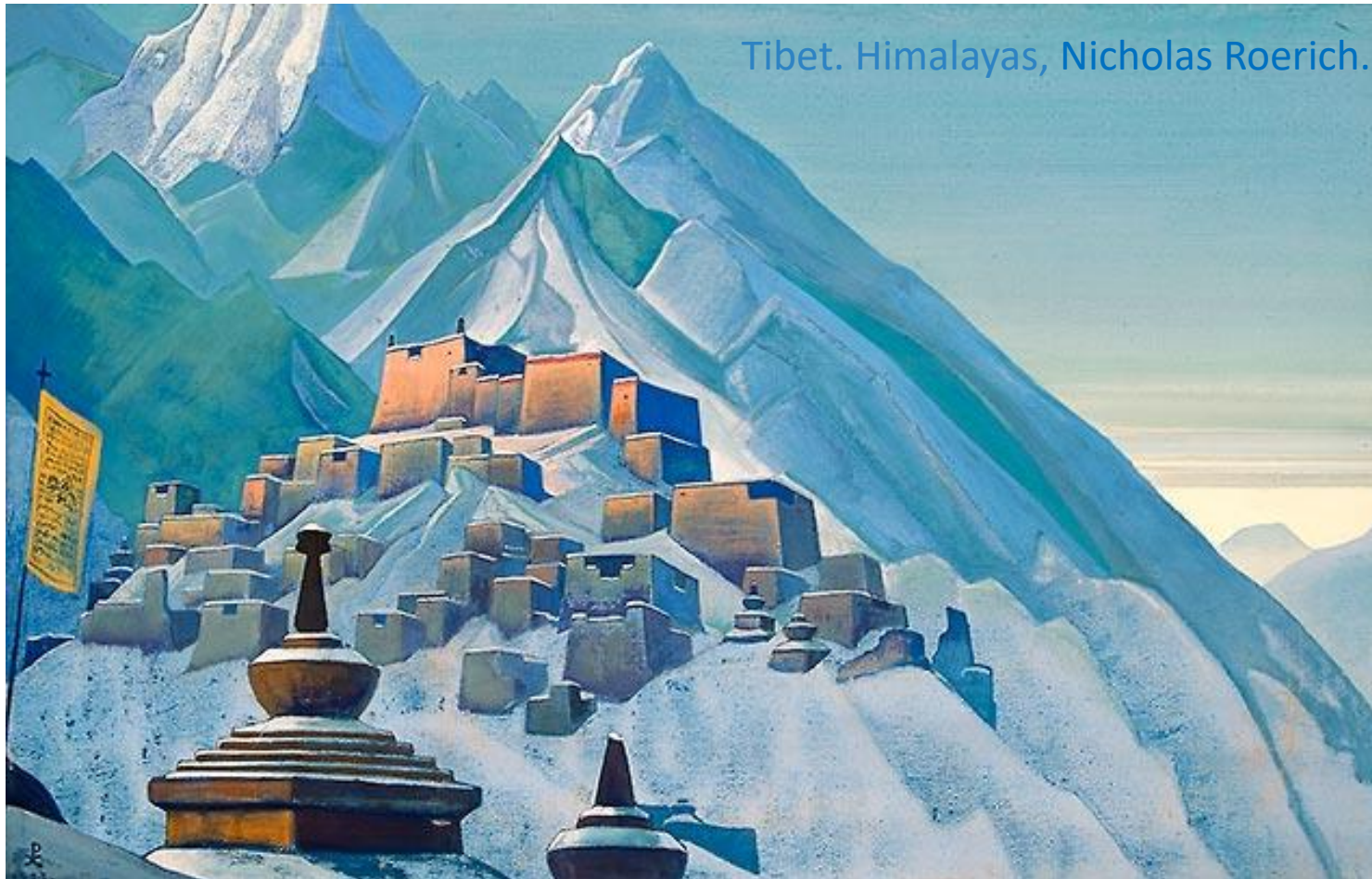
Deep empathic understanding versus inability to get close enough to others to understand them

Gentle tact versus blunt expression of opinion

Ray 2 Soul/Ray 1 Personality Integration

- It's the task of the second ray soul to infuse spiritual love and wisdom into the first ray personality that is instinctively self-centered, self-willed and resistant to altruism.
 - ❖ The soul seeks to impose a broader, and more inclusive perspective, but the personality is innately exclusive, overly-assertive and full of the qualities of isolation and alienation.
 - ❖ The soul works to dissolve the many barriers the personality has built around itself through the steady and consistent radiation of light.
- Slowly, through this constant process, the soul trains the personality to quiet and soften the harshness.
- Enfolding, illuminating, quieting—these are the methods used by the second ray soul brings love and wisdom into the consciousness of a personality which would rather force its way through the world alone.

Integration Formulae for Rays 2 and 1: *Inclusive Centralization*



Centralization is the Ray 2 formula; *Inclusiveness* is the Ray 1 formula. Composite effect for soul and personality integration is an inclusive personal attitude fostering the discovery of one's spiritual center

Ideal Expression of a R2 Soul and R1 Personality

- Loving understanding is expressed with power and firmness
 - ❖ The union of love and will, with love preponderating.
 - ❖ Wise and gentle understanding is conveyed with strength.
 - ❖ Comprehensive studies are relentlessly pursued.
 - ❖ The most benevolent motives are powerfully carried into life experience.
 - ❖ Deep love is expressed without a trace of sentimentality.
 - ❖ The tendency towards attachment masters the tendency towards detachment.
 - ❖ The heart of gold is found beneath an often-distant or somewhat forbidding exterior.

Ray 2 Soul, Ray 1 Personality Examples





It's a struggle between the Ray 2 Soul's deeply subjective attitude characterized by wisdom and loving understanding . . . counteracted by the Ray 3 Personality's far more objective, materialistic attitude based on a determination to face life chiefly through intellectual acuity, resourcefulness and adaptability



Some other Ray 2 Soul qualities versus Ray 3 Personality traits include:

Deep feeling of the heart versus unfeeling thought of self-interests

Profound subjectivity versus blindness to spiritual subtleties

Silent nonverbal understanding versus overly verbal

Sensitive stillness in meditation versus busyness militating against effective meditation

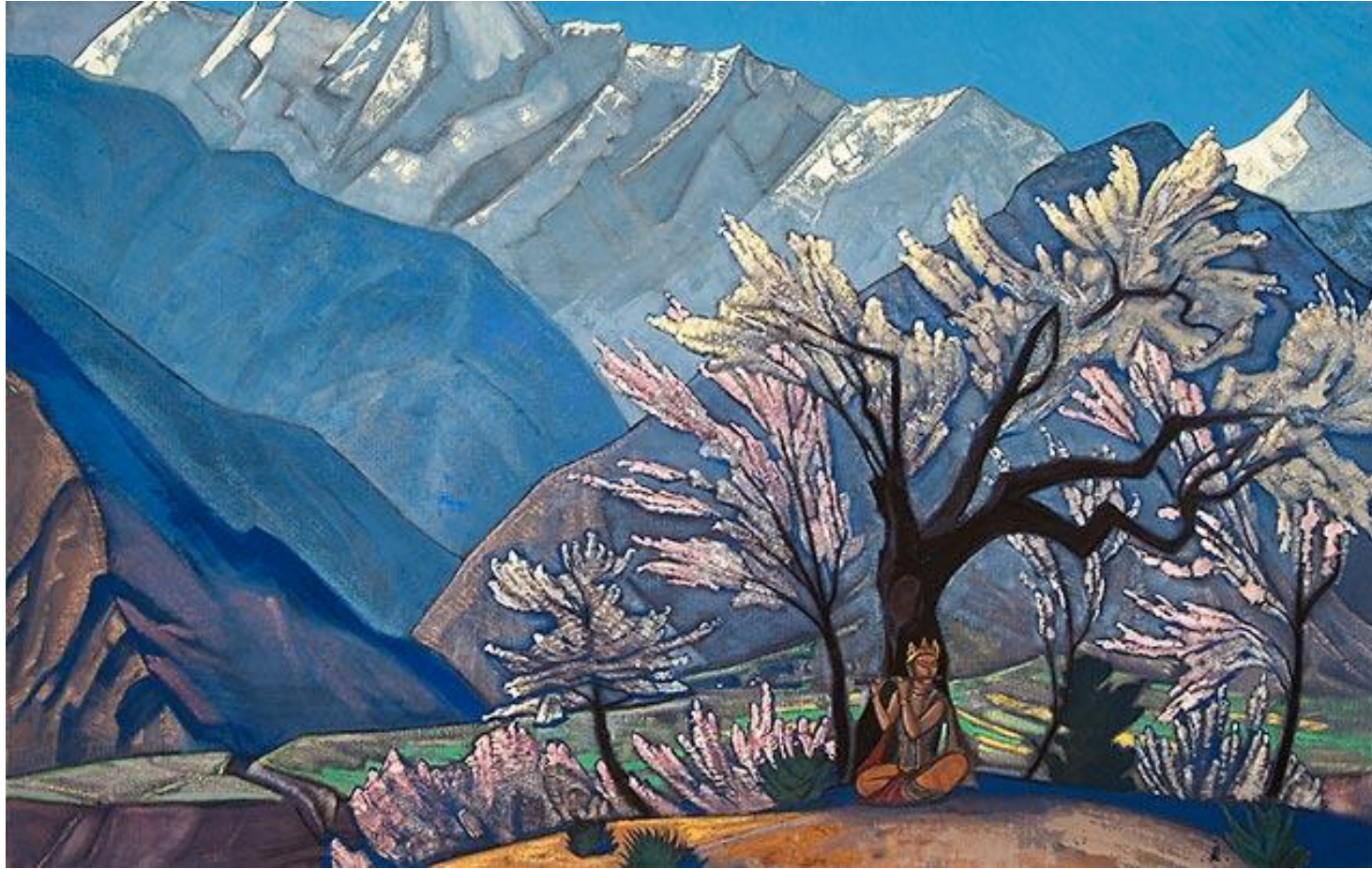
Trust and joyful openness versus wariness and suspicion

Ray 2 Soul/Ray 3 Personality Integration

- It's the task of the second ray soul to quiet the third ray personality.
 - ❖ The personality is overactive, over-talkative and frequently so busy that it “crowds out” the impressions that might be received from others
- Breathing forth calm, silence and stillness, the soul seeks to reveal to the personality the ‘noise’ that the personality so constantly generates
 - ❖ then impresses upon the personality the thought that “less is more”
 - ❖ that it is not always necessary to be manipulative in the affairs of others
- Slowly the soul teach the personality how to trust in love, and to understand that inherent in others is the possibility of their success
 - ❖ They will act, at the right time, of their own accord (manipulation is not necessary)
 - ❖
- The uncompromising illumination of the second ray soul thrown upon the unending stream of third ray plans and activities reveals their futility, and soon convinces the personality that it is useless to weave and maneuver in the dark

Integration Formulae for Rays 2 and 3: *Still Centralization*

Krishna, Nicholas Roerich.



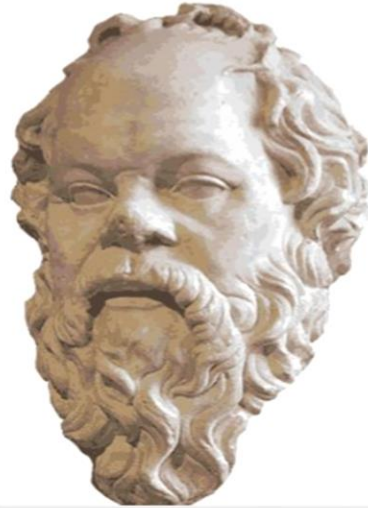
Centralization is the Ray 2 formula; *Stillness* is the Ray 3 formula. Composite effect for soul and personality integration is the personality stillness fostering the ability to find and maintain one's spiritual center

Ideal Expression of a R2 Soul and R3 Personality

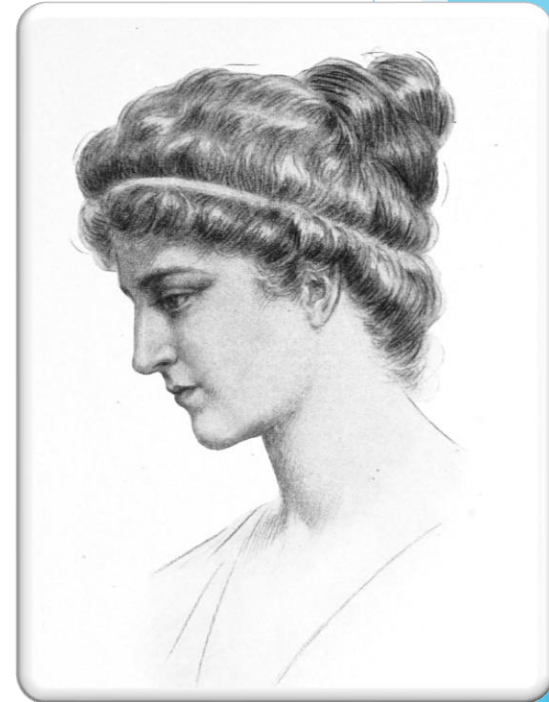
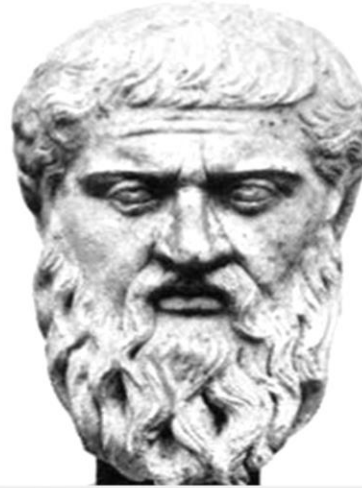
- Love and understanding are expressed with great activity/intellectual resourcefulness.
 - ❖ A multitude of ways are devised to express a deeply-felt humanitarianism.
 - ❖ Wise, intuitive insights are creatively communicated—the versatile educator..
 - ❖ The scholar with a penchant for philosophical expression.
 - ❖ The teacher who possesses the business and financial skills to see that his message is widely distributed.
 - ❖ The wise use of slow action masters the tendency towards excessive activity and wasted motion.
 - ❖ The heart masters the busy intellect.
 - ❖ Benevolence and loving kindness are expressed with ingenuity and polish.

Ray 2 Soul, Ray 3 Personality Examples

Socrates
470-399 B.C.



Plato
428-348 B.C.





It's a struggle between the Ray 2 Soul's need for serene expression of spiritual love-wisdom . . . counteracted by the Ray 4 Personality's dramatic expression of widely-fluctuating states of personal feeling and emotion.



Spiritual love and wisdom versus personal expressiveness

Tranquility based on clear spiritual vision versus moodiness/blind reaction to fluctuations in life

Scholarly pursuit of Divine Wisdom versus rejection of scholarly path in pursuit of life experiences

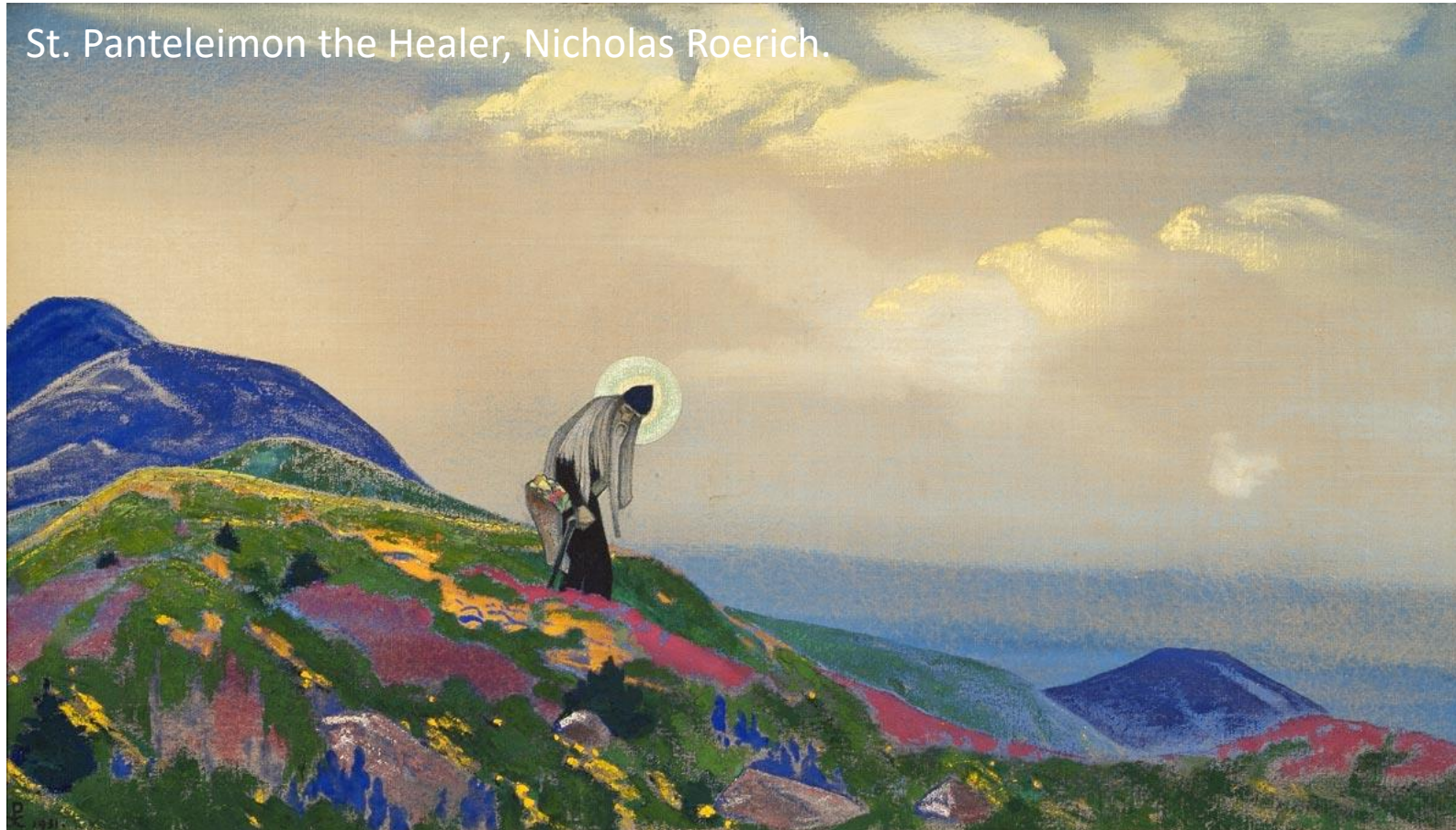
Wise avoidance of extremes versus constant alternation between extremes

Selfless concern for others versus selfish concern with own never-ending problems

Ray 2 Soul/Ray 4 Personality Integration

- It's the task of the soul to bring peace/serenity to the turmoil of the Ray 4 personality.
 - ❖ The soul, endowed with a steady, loving radiance seeks to share this radiance with a personality that is constantly reactive and fluctuating
 - ❖ With an all-embracing sense of inclusiveness, the soul pervades the personal psyche, containing many opposites between which the Ray 4 personality oscillates.
 - ❖ The soul seeks to demonstrate that *both sides* of a conflict must be brought together in unity, for both sides are different aspects of the same thing
- The soul pressure towards integration will be felt by the personality (initially, at least) as diminishing its expressive power, and the quieting and neutralizing of its dramatic flair.
 - ❖ It loves the feeling of poignant contrasts, sudden emotional changes of pace; it loves to be moved by the muse and inspired by spontaneous urges
 - ❖ But after agony and ecstasy have run their course, the personality begins to relinquish its central place on the stage to the rising of a greater star—the soul
 - ❖ Beyond the delights of personal self-expression lies the beauty of love and wisdom

Integration Formulae for Rays 2 and 4: *Steadfast Centralization*

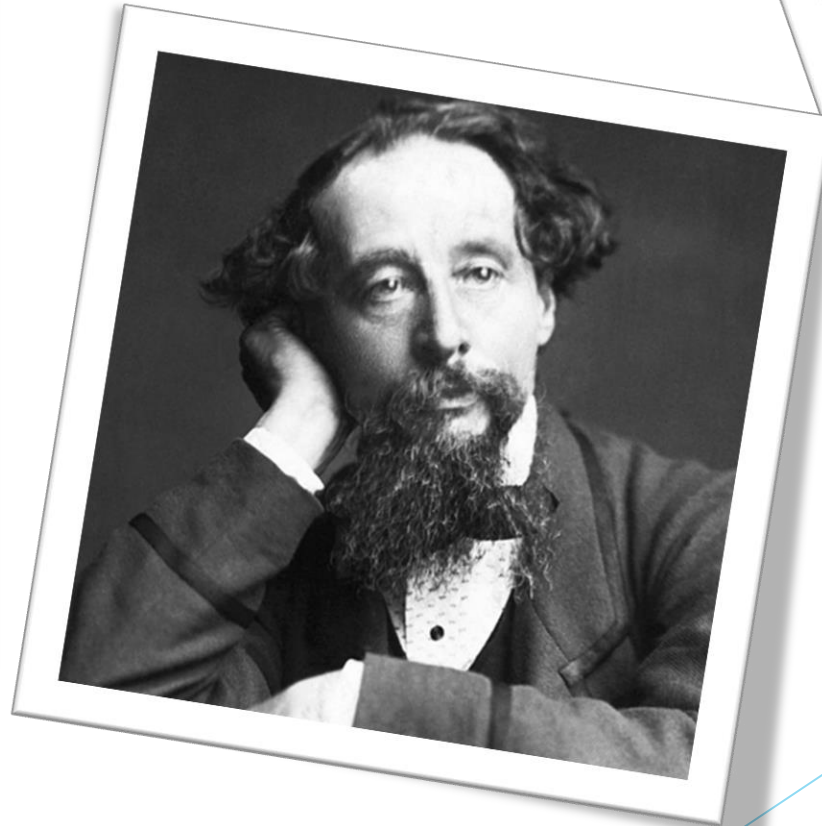
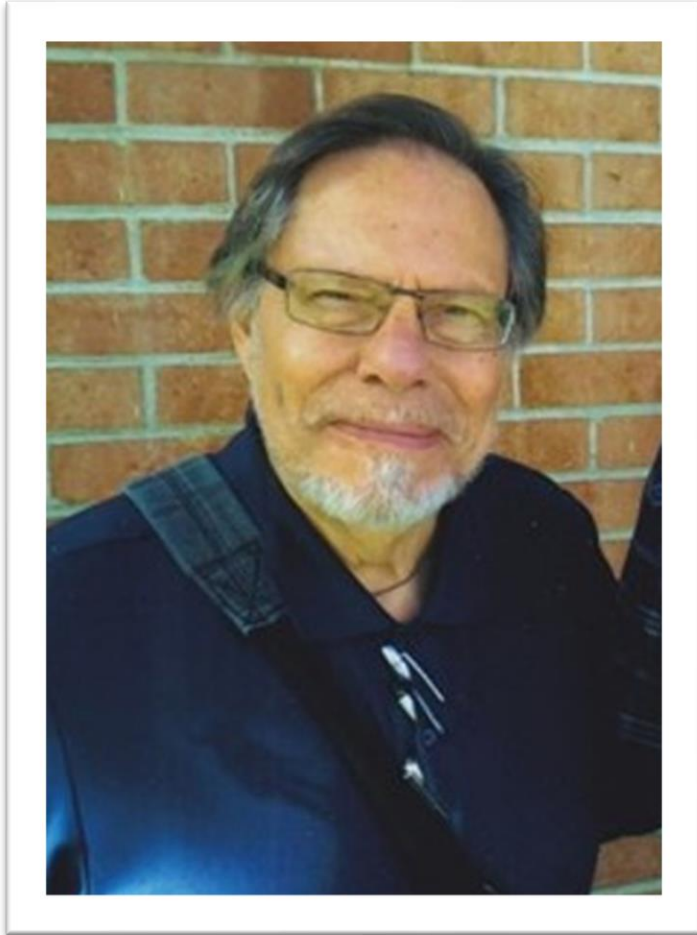


Centralization is the Ray 2 formula; *Steadfastness* is the Ray 4 formula. Composite effect for soul and personality integration is the steadfastness of personality consciousness fostering the ability to find and maintain one's spiritual center

Ideal Expression of a R2 Soul and R4 Personality

- Loving understanding is expressed harmoniously with complete skill-in-action
 - ❖ Radiant serenity/confidence master inner/outer conflict, turmoil, and agony of dissonance.
 - ❖ Many conflicting personal/environmental energies are wisely/gently fused into a whole.
 - ❖ Love is served, and love is expressed through the ability to end conflicts within, and bring peace and equilibrium to, the inner and outer environment.
 - ❖ All things/people are unified into a whole through the power to build bridges of rapport.
 - ❖ The teacher teaches through his aesthetic sensibilities.
 - ❖ A wise understanding of human nature is expressed through through dramatic action.
 - ❖ The one who seeks to save and salvage finds success through his deep understanding of, and identification with, the human predicament.

Ray 2 Soul, Ray 4 Personality Examples





It's a struggle between the Ray 2 Soul's deep, intuitive love of the heart . . . counteracted by the Ray 5 Personality's strictly analytical and rational approach to knowledge – rejecting all that doesn't appeal to common sense.



Soul-inspired love-wisdom versus preoccupation with concrete knowledge/analytical thought

Magnetism of the loving heart versus nonmagnetic personality due to an interfering mind

Wise, inclusive point of view versus narrow, restricted view of the strict specialist

Love of pure, subjective truth versus acceptance of only what is immediately verified

Reverence and deep humility versus irreverence and mental arrogance

Ray 2 Soul/Ray 5 Personality Integration

- It's the task of the soul to broaden understanding of the personality by dissolving the barriers (erected by concrete thought) preventing an acceptance of subtler realities.
 - ❖ The soul's intuition/understanding of spiritual intangibles is faced with a linear, analytical personality who relies on the head, and dismisses the heart as unreliable
 - ❖ The soul, sensitive to wisdom, seeks so to illumine the personal mind so it begins to see the limitations of its preoccupation with narrowly-defined, concrete areas of specialization
- The soul has a remarkable ability to verify truth inwardly, and it is a reliance upon this capacity that it tries to convey to the skeptical, concretely intellectual personality.
 - ❖ The soul, in subtle ways, demonstrates to this mentally self-sufficient personality the many areas in which "the way of the head" is simply inadequate.
 - ❖ Gradually, the mental fixation of the personality is dissolved, the knot of concrete consciousness is loosened, and the broader ways of heart understanding filter in
- The soul pressure towards integration will be felt by the personality as a subtle but persistent devaluation of the all-consuming technical interests pursued
 - ❖ The personality has been engrossed in its specialized fascinations and enthusiasms
 - ❖ These narrowly focused interests have been quite satisfying, but unrelated to the larger picture the soul wishes to expose to the personality

Integration Formulae for Rays 2 and 5: *Detached Centralization*



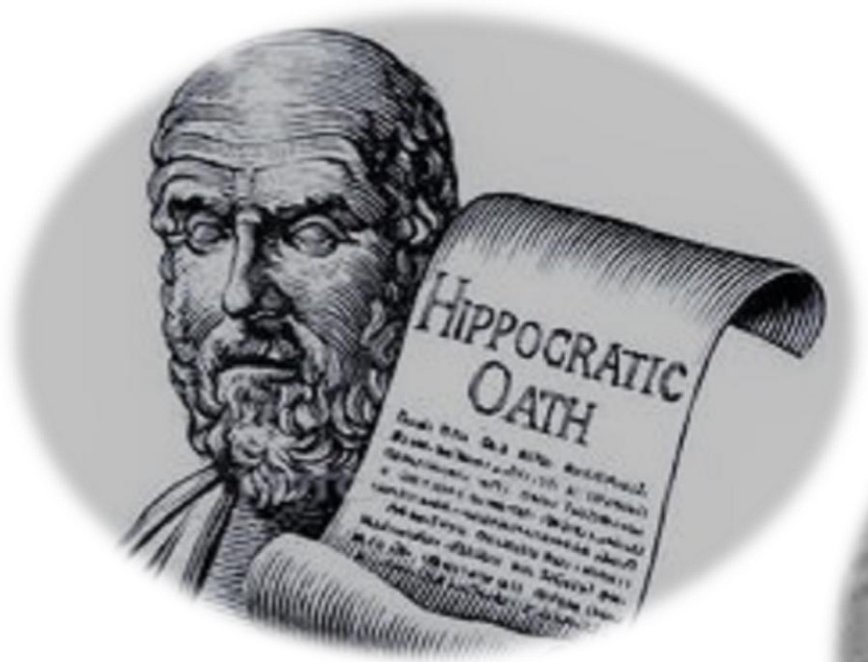
Star of the Hero, Nicholas Roerich.

Centralization is the Ray 2 formula; *Detachment* is the Ray 5 formula. Composite effect for soul/personality integration is the kind of mental detachment fostering the ability to find and maintain one's spiritual center

Ideal Expression of a R2 Soul and R5 Personality

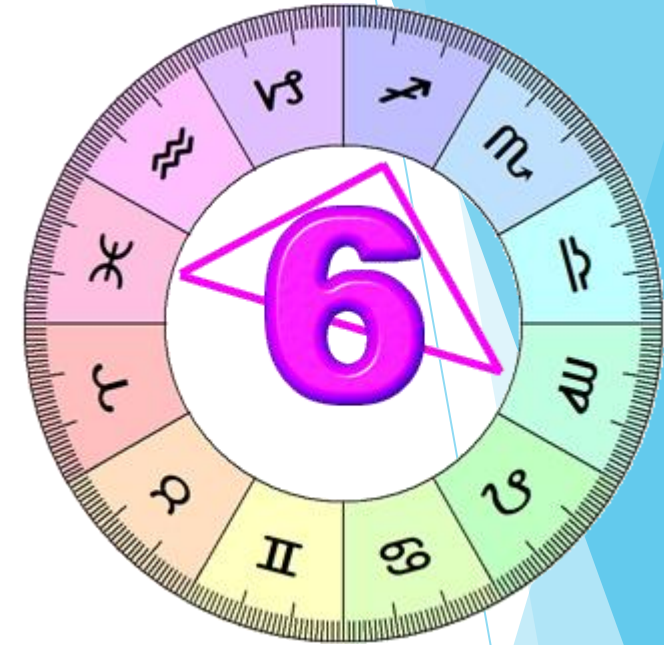
- Ideally, loving understanding of the heart is expressed through the application of scientific knowledge and with solid common sense.
 - ❖ Preoccupation with quality, essence and the subjective reality, masters preoccupation with form.
 - ❖ Seeing the whole pattern, and the multitude of interrelationships, masters the tendency to see just the detail of the part.
 - ❖ Compassion and mercy master the tendency to sit in judgement.
 - ❖ The heart masters the concrete intellect.
 - ❖ Love is expressed through research and discovery.
 - ❖ The way of wisdom and divine understanding is supported by a practical comprehension and technical mastery of the facts.
 - ❖ Humanity's religious and spiritual impulse is shown to be supported by scientific fact and natural law.

Ray 2 Soul, Ray 5 Personality Examples





It's a struggle between the Ray 2 Soul's need to express a broad, unconditional soul love . . . counteracted by the Ray 6 Personality's desire to focus a narrow, devoted, personal love upon an idealized other.



All inclusive spiritual love versus narrow personal devotion

Wisdom to love non-possessively versus extreme possessiveness and jealousy

Experiencing the center of love divine within self versus longing for someone other than self

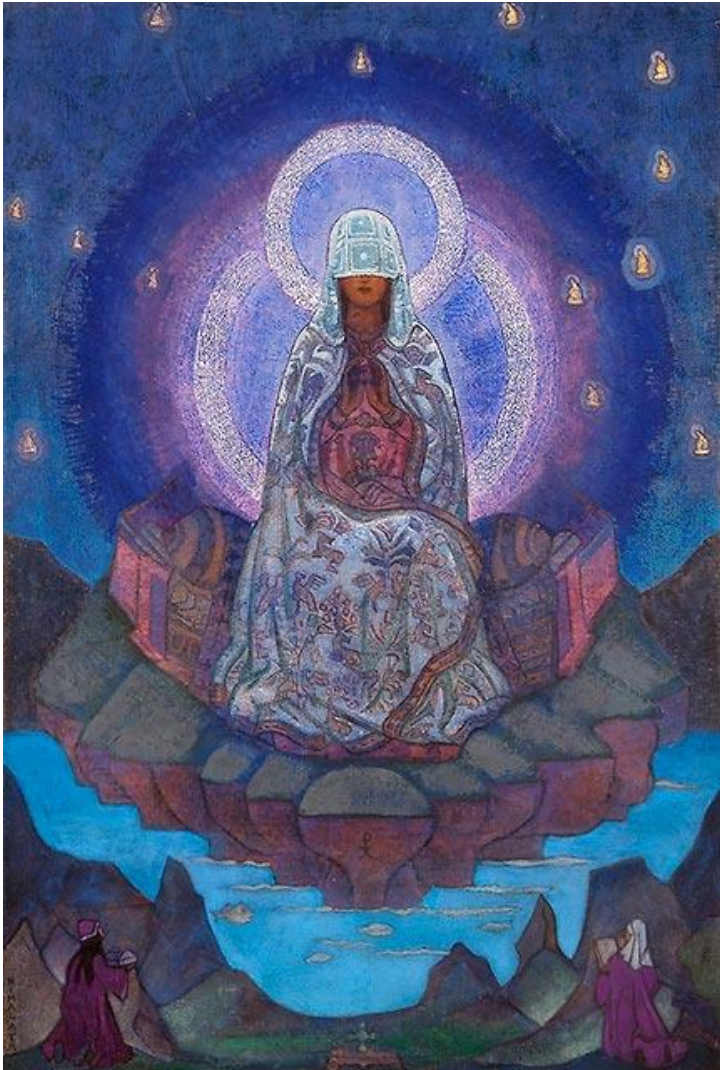
Gentle soul love versus unregulated personal intensity

Teaching through wise and loving evocation versus insistence that others follow your preaching

Ray 2 Soul/Ray 6 Personality Integration

- It's the task of the soul to moderate the extremism of the sixth ray personality, who is always rushing off after an idealized vision.
 - ❖ The soul seeks to present a broad, inclusive, widely tolerant perspective to a personality which is fanatically driven to propel itself towards limited objectives and limited loves
 - ❖ The soul knows those limited objects of devotion will eventually fail to satisfy, and seeks to expand the personality consciousness to a truer sense of values
 - ❖ Armed with the brilliant light of revelation, the soul consistently demonstrates to the impassioned personality the relative worthlessness and insignificance of all it held dear.
 - ❖ Gradually, the soul weakens and dissolves the personality's furious grip upon the inconsequential. Imperceptibly, the soul teaches the personality (after numerous disillusionments) to remove the "blinders" which prevented a vision of the beauty of the Whole—not just the idealized beauty of one or two things within the Whole.
- The personality begins to sense its relative unimportance, one of innumerable others
 - ❖ *All* following their own vision, *all* devoted to their own ideals
 - ❖ Life seems less secure, the path to be trodden less direct, but the world is larger

Integration Formulae for Rays 2 and 6: *Restrained Centralization*



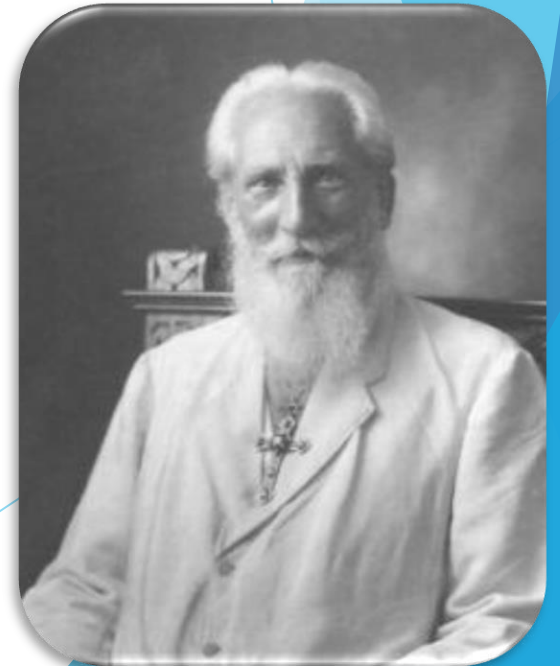
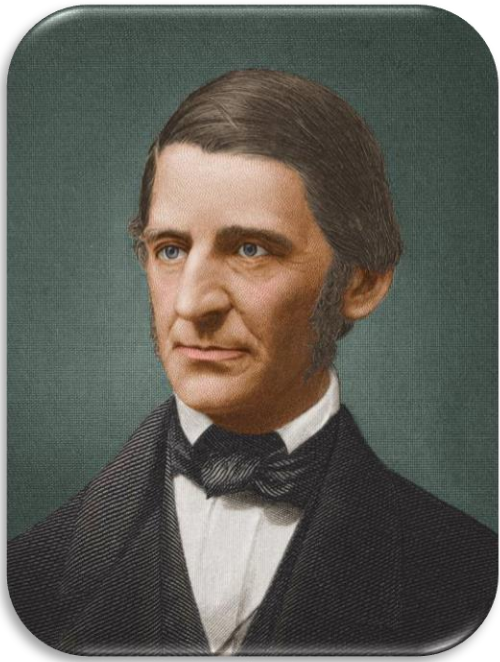
Mother of the World,
Nicholas Roerich.

Centralization is the Ray 2 formula;
Restraint is Ray 6 formula. Composite
effect for soul and personality
integration is emotional and personality
restraint fostering the ability to find and
maintain one's spiritual center

Ideal Expression of a R2 Soul and R6 Personality

- Ideally, loving understanding is expressed with complete devotion and self sacrifice.
 - ❖ Broad inclusive love masters narrow, emotional loyalties and attachments.
 - ❖ The love of the heart masters the emotion of the solar plexus.
 - ❖ Impersonal love prevails but a personal, feeling-sensitivity is still preserved.
 - ❖ The pursuit of wisdom and detailed pattern of pure truth are aided by unflagging zeal.
 - ❖ The expression of love for all becomes a passionately pursued ideal.
 - ❖ Deep humility is supported by a willing, self-abnegation.
 - ❖ There is total emotional commitment to a life of salvage and redemption.

Ray 2 Soul, Ray 6 Personality Examples





It's a struggle between the Ray 2 Soul's intuitive focus on essential quality . . . counteracted by the Ray 7 Personality's preoccupation with the appearance of form

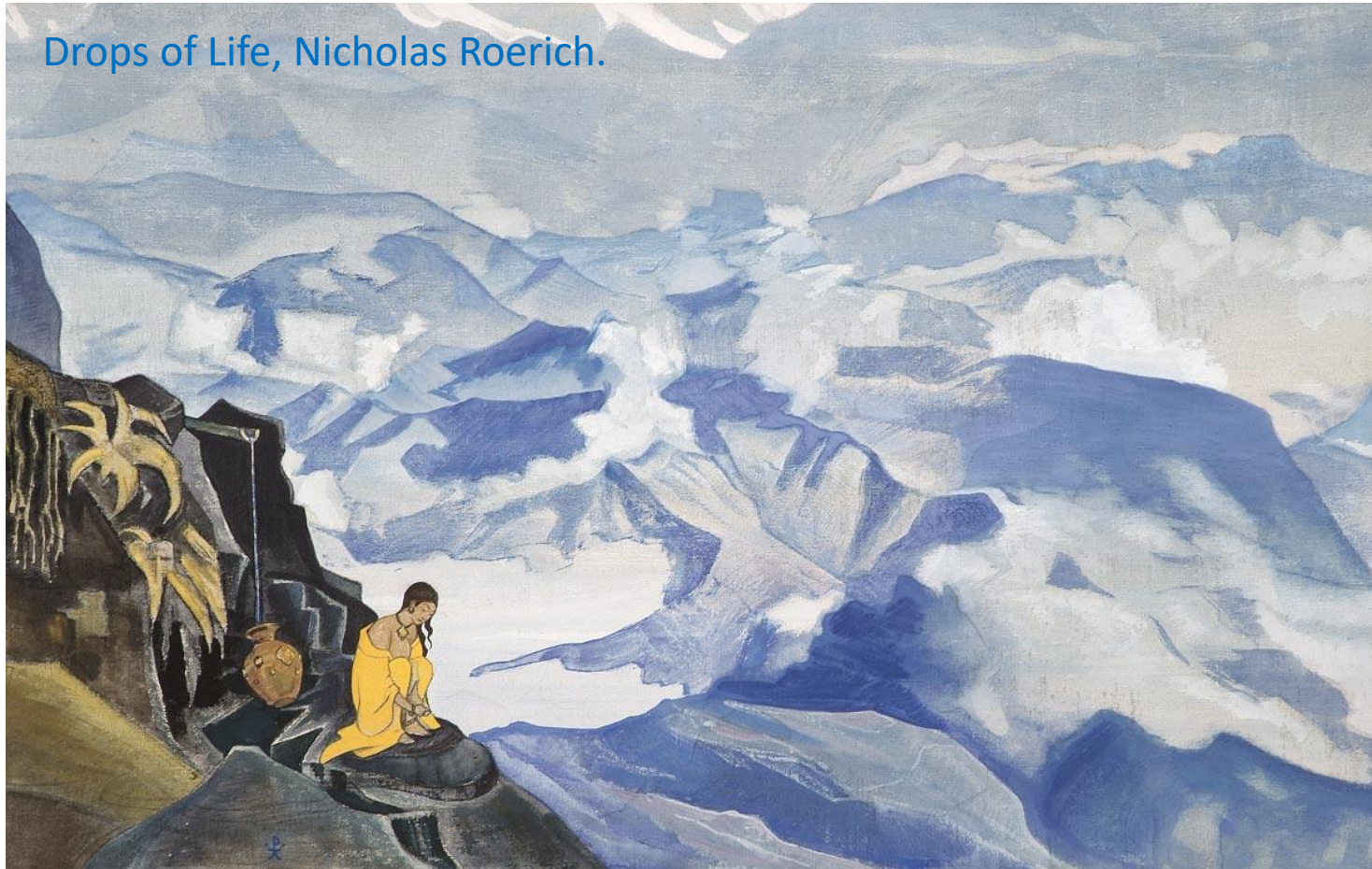


Deep spiritual subjectivity versus preoccupation with pragmatism
Evoking individual identity versus inclination to standardize others
Love of setting people at ease versus rigid/formal attitudes that arouse discomfort in others
Spontaneous mercy and humanitarianism versus pettiness that imposes the letter of the law
Radiant light of the soul versus instinctual life of the form

Ray 2 Soul/Ray 7 Personality Integration

- It's the task of the soul to impress upon the personality the value of subjectivity.
 - ❖ The soul understands the essential *quality* of which all form is an emanation; the Ray 7 personality, however, is usually all too attentive to the form
 - ❖ The soul is sensitive to the heart, seeking to pervade the personal consciousness with a deep, impersonal love to ameliorate the personality's tendency to judge by appearances
 - ❖ Sowing love and wisdom in all experiences, the soul looks for a harvest of right human relations and illumination; while the personality is wedded to other more material values
 - ❖ The soul's task is to influence the personality to release its grip upon the material plane
- The seventh ray personality has the greatest difficulty relinquishing the many forms of conditioning to which it has been subjected
 - ❖ The gradually dawning trust and positivity inspired by the loving soul gradually makes this relinquishment an inevitability.
 - ❖ The personality lets go of the security of established form and is compensated by receiving the surety of spiritual love and wisdom

Integration Formulae for Rays 2 and 7: *Oriented Centralization*



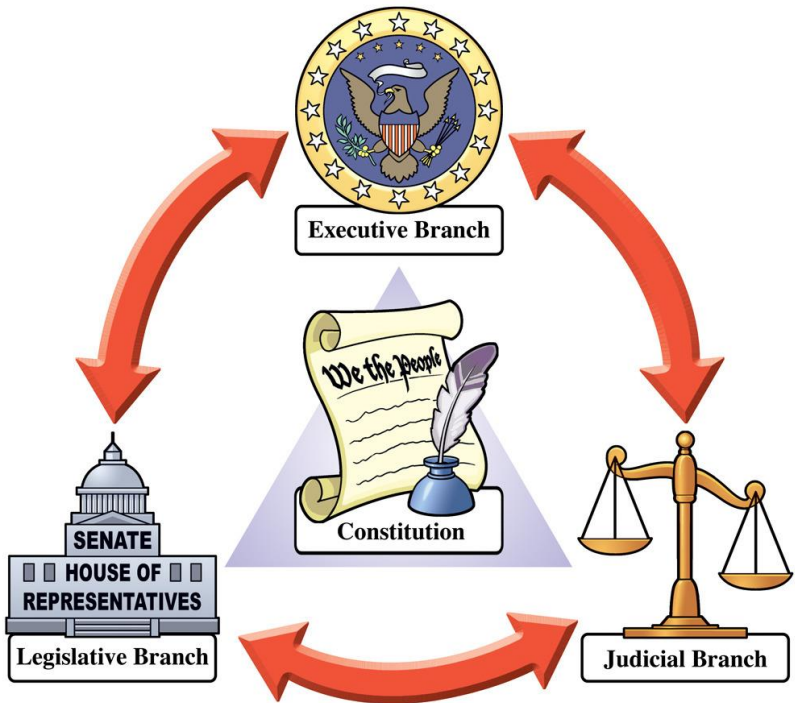
Centralization is the Ray 2 formula; *Orientation* is the Ray 7 formula. Composite effect for soul/personality integration is attentive spiritual orientation of the personality that helps the individual detach from peripheral attachments and find and maintain his spiritual center

Ideal Expression of a R2 Soul and R7 Personality

- Ideally, a deep feeling for human unity is expressed in group movements, thru well-structured programs, with real attention to/understanding of the group spirit.
 - ❖ Loving energies are perfectly instituted through right practice.
 - ❖ The urge to unity is expressed in *action* (appropriate action) upon the physical plane.
 - ❖ The wisdom of the heart masters the supposed rightness of method and outer techniques.
 - ❖ The inner work is seen to be more important than its outer expression.
 - ❖ It's seen that the heart must be in all acts before these acts can embody spirituality, no matter how rightly or perfectly they are executed.
 - ❖ Essential love triumphs over and expresses itself through perfected form.
 - ❖ The love which brings healing is applied with consummate skill.

Ray 2 Soul, Ray 7 Personality Examples





Remember that you are Water.
Cry. Cleanse. Flow. Let Go.

Remember that you are Fire.
Burn. Tame. Adapt. Ignite.

Remember that you are Air.
Observe. Breathe. Focus. Decide.

Remember that you are Earth.
Ground. Give. Build. Heal.

Remember that you are Spirit.
Connect. Listen. Know. Be Still.

