



Ray 3 Soul/Personality Expressions

Ray 3 Soul, Ray 1 Personality

Ray 3 Soul, Ray 2 Personality

Ray 3 Soul, Ray 4 Personality

Ray 3 Soul, Ray 5 Personality

Ray 3 Soul, Ray 6 Personality

Ray 3 Soul, Ray 7 Personality

We Are All Part Of An All-Inclusive Entity



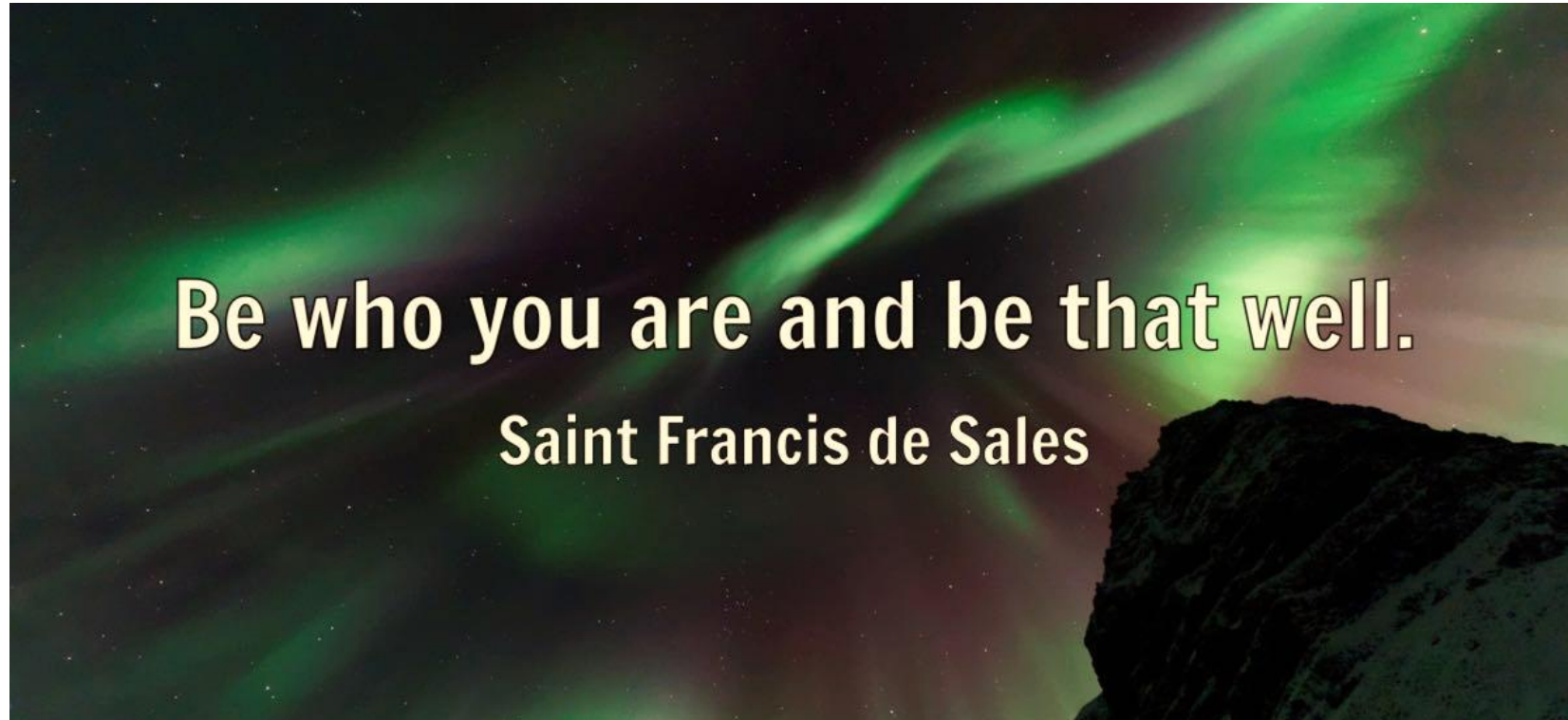
The Beginning by Naomi Walker

We are intended to cooperate in ITS creative purposes by manifesting our archetypal nature.

At our present stage of evolution, it is easy to forget that each of us is a spiritual archetype.

The higher worlds are not easily accessible to the brain-conditioned consciousness, and, even in our most exalted moments, it is easier to think of having a spiritual archetype than of being one.

The Nature of Individual Purpose



Each of us has a unique life purpose. There is something we must be, something we must do, and that is to express that spiritual archetype we are supposed to be expressing this lifetime. This is our true identity.

Nothing But Energy



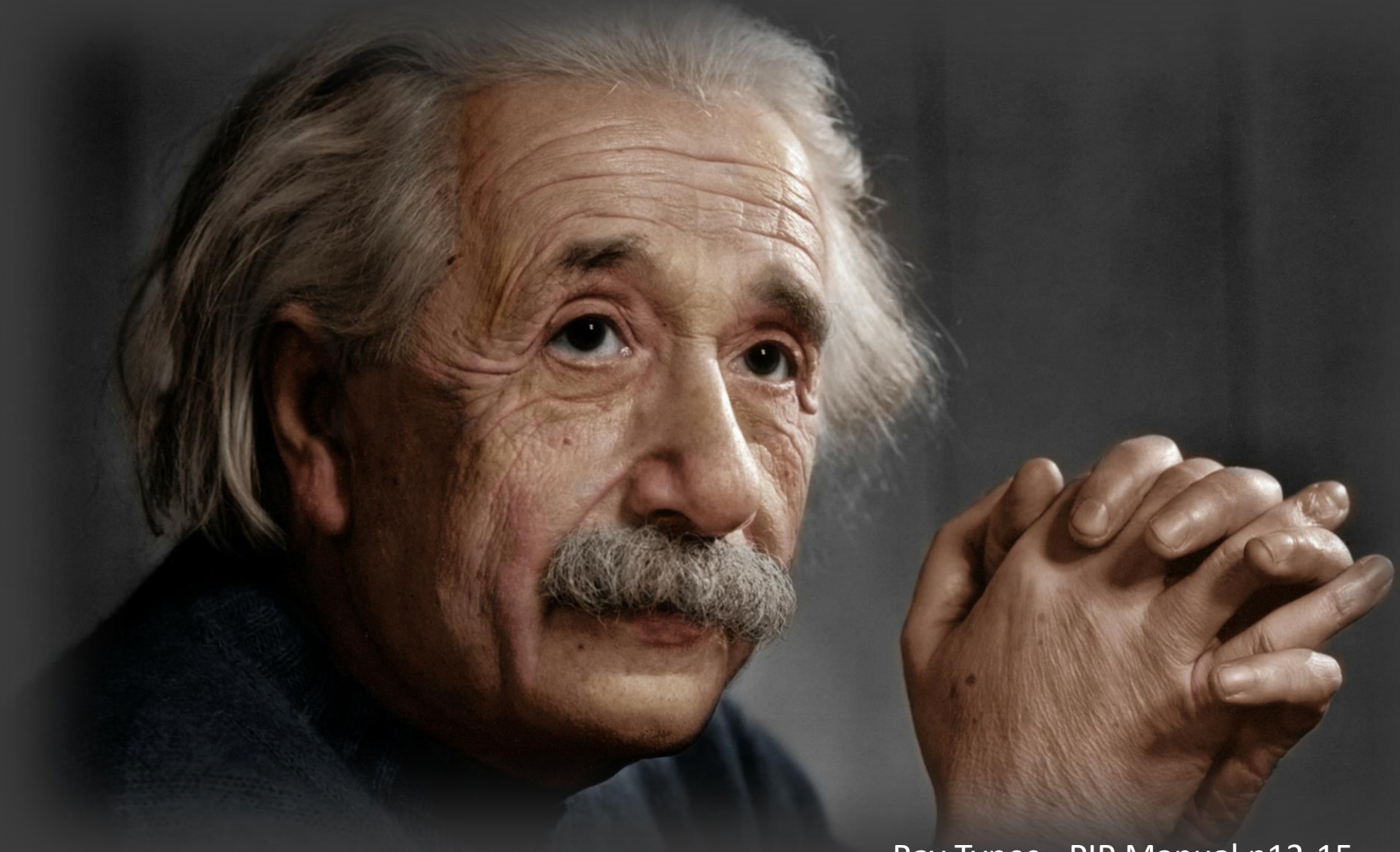
There is nothing but energy, and all things are patterned forms of that energy in its innumerable differentiations and combinations.

Ray 3 – Active Intelligence



Word of Power: Purpose itself am I.

Ray 3 Type A – Intelligence

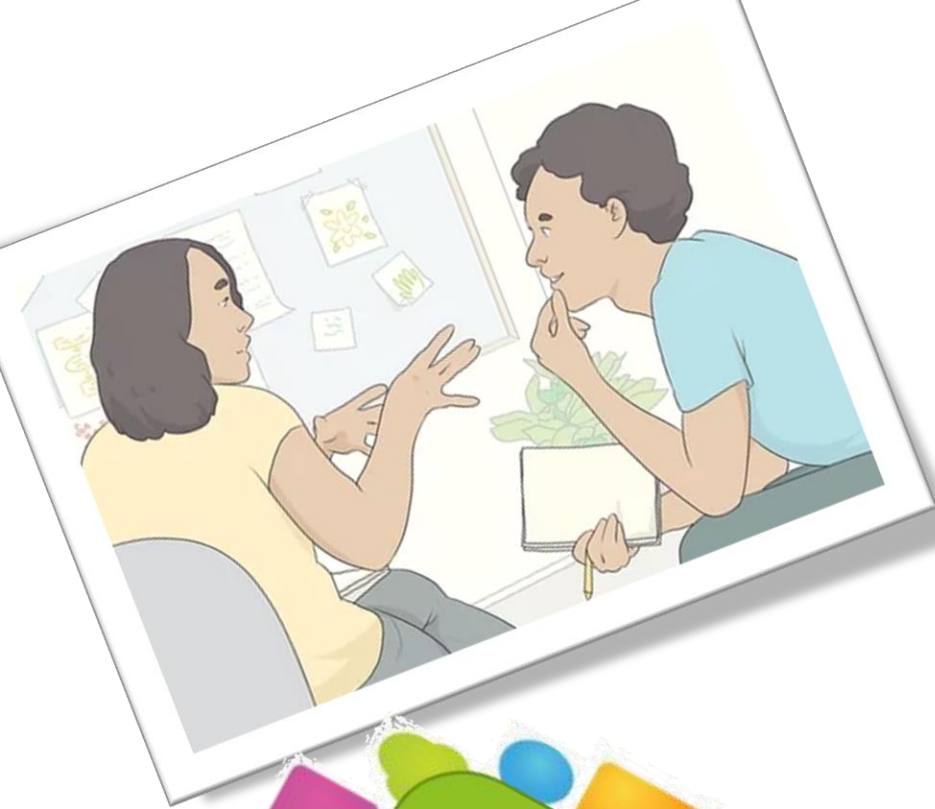


Ray 3 Type B – Activity, Adaptability



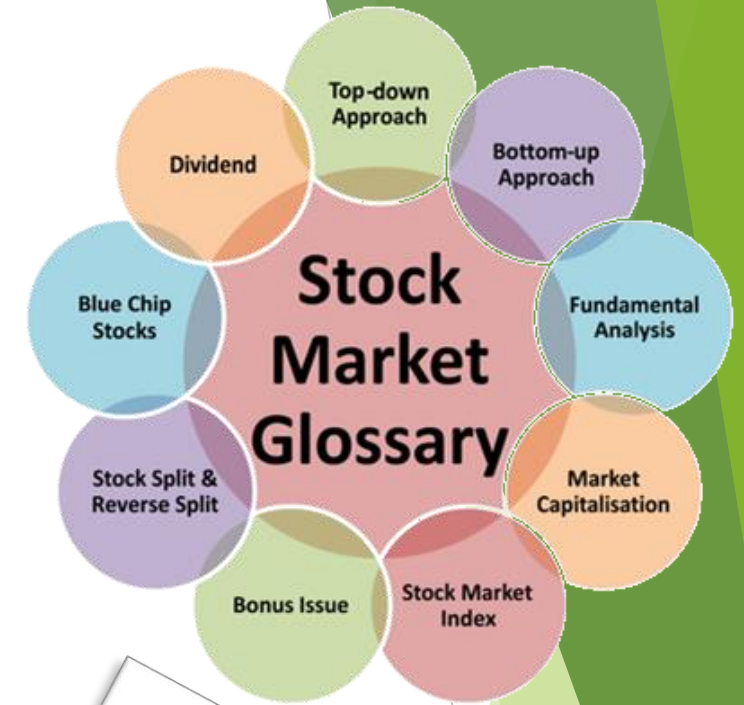
You Might be a Ray 3 Soul if . . .

- You have a capacity for abstract thinking and like to theorize and speculate
- You have wide views and an appreciation of the divine many
- You have the capacity to weave together many diverse lines of thought
- You have the ability to understand/explain complex woven patterns and trends
- Your creative thought and action are keyed to manifesting the Divine Plan
- You have the power to plan, strategize, and manipulate – to make things happen
- You have executive and business aptitudes, and great capacity to network
- You have the ability to understand economy, handle money, be philanthropic
- You have a facility with language and are a soul-inspired communicator
(you have the power to be vocal and render thought into the word)



Vocational Indications:

Positions where considerable intellectual power and resourcefulness are required. Business and finance, academic and theoretical work, creative think-tanks, market speculation, advertising, etc.



Think
Tank

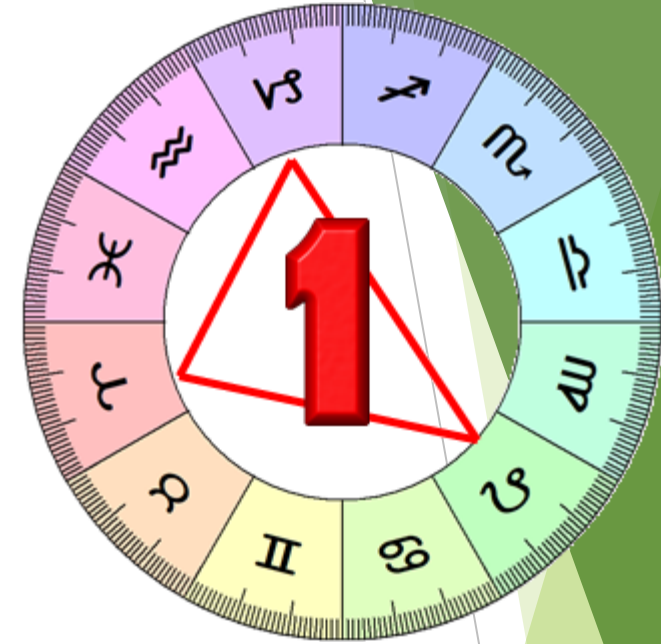


People take different roads seeking fulfillment and happiness. Just because they're not on your road doesn't mean they've gotten lost.

Dalai Lama



It's a struggle between the Ray 3 Soul's need to achieve a wide comprehension of variables . . . counteracted by the Ray 1 Personality's impatient desire to cut right through complex issues in the interest of expeditious action.



Incisive spiritual intelligence vs personal action motivated by love of personal power
 Appreciation of the divine many vs exaltation of the personal ego above all the many
 Creative thought/action to manifest the Divine Plan vs thought/action for personality purposes
 Capacity to network/many channels of communication vs personal isolation and unrelatedness
 Great flexibility/adaptability for spiritually motivated projects vs resistance to demand for adaptability

Ray 3 Soul/Ray 1 Personality Integration

- It's the task of the Soul to render the personality more cautious and circumspect.
 - ❖ The soul-identified consciousness sees widely, whereas the personality has no time for such useless, academic perspectives.
 - ❖ Sensing the possibility of ill-considered, disruptive action from the personality, the soul seeks to impress on the personality the value of the tactical approach.
 - ❖ The soul realizes the extent to which *many* variables have to be taken into simultaneous consideration in order for plans to materialize as intended;
 - ✓ Whereas the personality craves only the simplicity of direct action.
- Gradually, it begins to dawn on the personality that the enjoyment it derives from a feeling of strength must give way to an appreciation of the value of relativity.
 - ❖ Under the pervading influence of the soul, self-assured personal power begins to seem a very small thing compared to the wonders of the Divine Mind.
 - ❖ Self-will, once so eagerly enforced, begins to be seen as an obstacle to the intelligent, adaptable mastery of circumstances.
 - ❖ The personality senses that it's been standing in the way of its own deeper desires for more intelligent living.

Integration Formulae for Rays 3 and 1: *Inclusive Stillness*



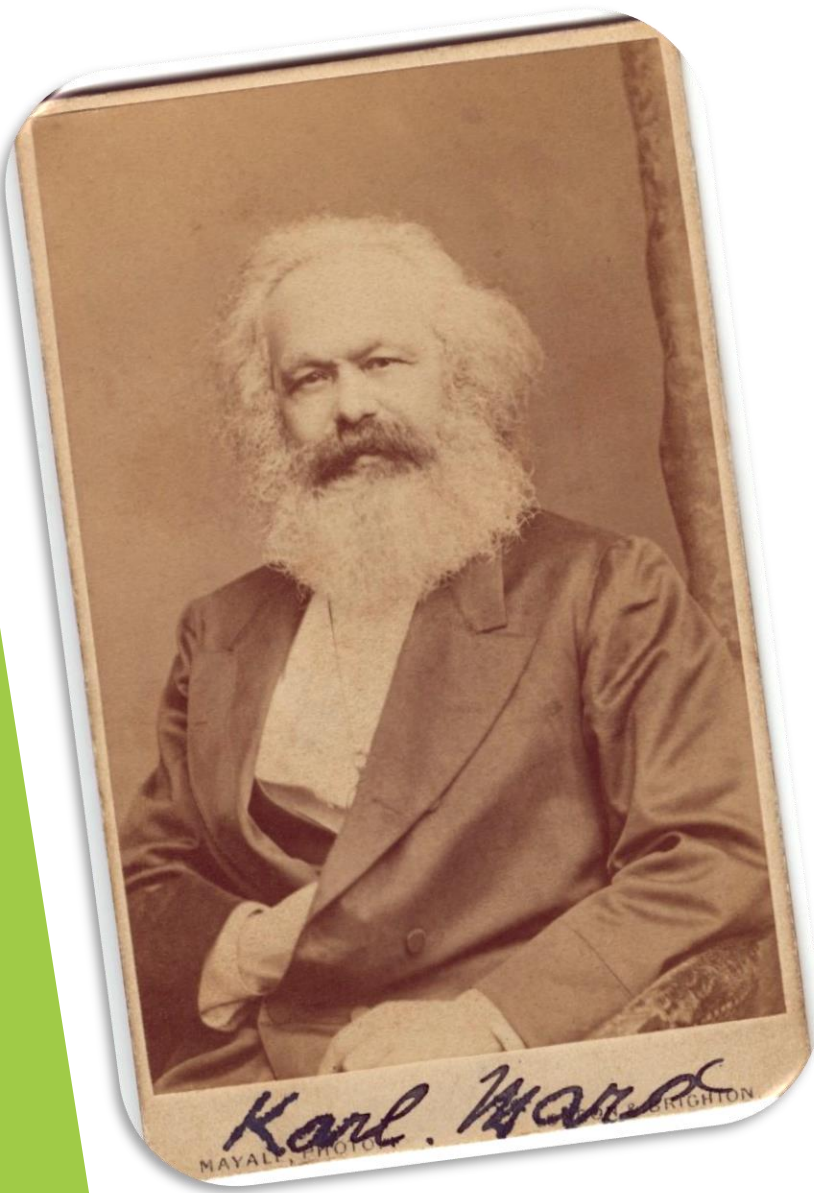
Translation, Agnes Pelton

Stillness is the Ray 3 formula; *Inclusion* is the Ray 1 formula. The composite effect for soul and personality integration is an inclusive attitude towards others, which quiets the conscience, and renders the personal consciousness receptive (in the stillness) to the divinely intelligent ways of serving others that the soul reveals.

Ideal Expression of a R3 Soul and R1 Personality

- Intelligent comprehension and creative activity are expressed with dynamic power.
 - ❖ Creative plans and large projects are executed with unfaltering one-pointedness.
 - ❖ Mobility masters immobility; adaptability overcomes inflexibility.
 - ❖ Intelligent manipulation supersedes willful insistence.
 - ❖ The ability to undertake many things successfully is supported by personal strength.
 - ❖ A person who can be eminently reasonable and forceful at the same time.
 - ❖ The ability to travel and go here and there as needed, masters the tendency to remain firm and immovable at the center.
 - ❖ The love of creative thinking and doing master the love of personal power.
 - ❖ Complexity is executed with simplicity.

Ray 3 Soul, Ray 1 Personality Examples





It's a struggle between the Ray 3 Soul's need to express acute, spiritual intelligence. . . counteracted by the Ray 2 Personality's desire for life where complete satisfaction of personal love is paramount.



Spiritual intelligence/wise head vs personal love/foolish heart
 Good judgment based on mental discrimination vs judgment adversely influenced by desire to maintain friendships
 Pursuit of great thought vs pursuit of a soft and comfortable life
 Power to make things happen vs personal inertia and reticence to act
 Deep and serious thinking vs frivolity and superficial gaiety

Ray 3 Soul/Ray 2 Personality Integration

- It's the task of the R3 soul to activate and intellectualize the R2 personality.
- The highly intelligent soul seeks to acquaint the personality with the acute energy of divine mental perception.
 - ❖ The mentally oriented soul faces difficulty in bringing the personality to relinquish its deep, sensitive attachments to those people and places it loves.
 - ❖ The soul seeks to induce greater mental and physical activity in a personality which is focused upon the quality of its close personal relationships.
 - ❖ The soul seeks to have the personality detach sufficiently to begin manipulating its material environment more effectively and in line with the Plan.
 - ❖ The potential activity of the R3 soul is great, but the R2 personality (still, calm and closely attached) is resistant to the required degree of activation.
- Mental discipline and activity are at length seen as a necessity by a personality that has been loathe to discipline its mind or think in an active, intellectual manner.
 - ❖ The personality begins to glimpse the many things that can be done, given sufficient intelligence and activity.
 - ❖ The personality is forced to learn that only those attachments/relationships working on expanding the intelligence can be sustained without frustrating the will of the soul.

Integration Formulae for Rays 3 and 2: *Centralized Stillness*



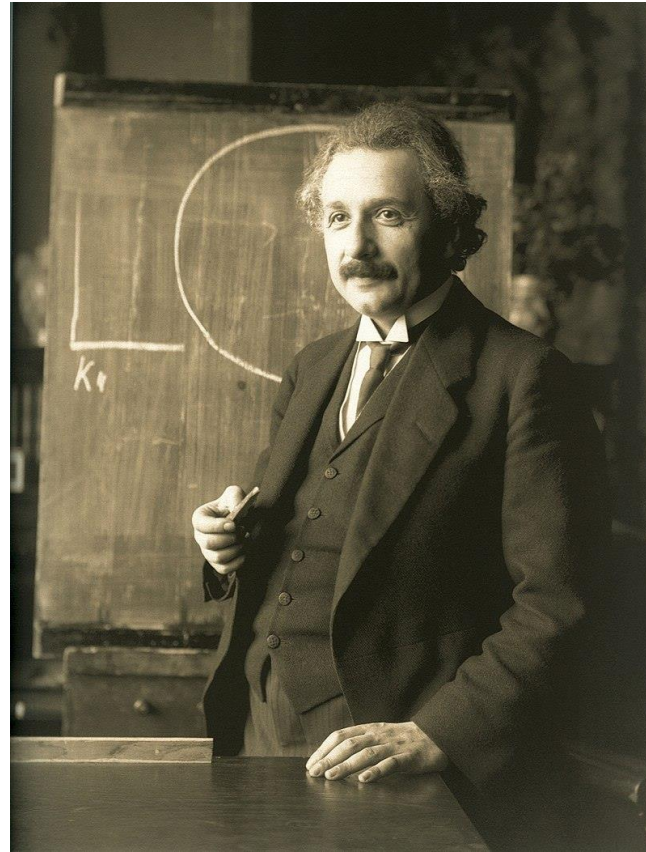
The Voice, Agnes Pelton

Stillness is the Ray 3 formula;
Centralization is the Ray 2 formula.
The composite effect for soul and
personality integration is the personal
centralization that contributes so much
to creating the stillness where spiritual
thought and action can be perceived.

Ideal Expression of a R3 Soul and R2 Personality

- Intelligent comprehension and creative activity are expressed lovingly, sensitively and with heart.
 - ❖ An intelligent comprehension which is detached and objective masters an approach that is too soft and kind to be effective.
 - ❖ A good business head masters a well-meaning but misguided heart.
 - ❖ Speedy execution of responsibilities wins out over slow movement and the love of comfort.
 - ❖ One who has accumulated much money through great financial skill shares it generously and whole-heartedly with others.
 - ❖ An abstract orientation is well-conveyed by someone who has the personal touch and a love of teaching.
 - ❖ While he's nice enough, others often have a hard time following his thought process.
 - ❖ An individual with great creativity and mental resourcefulness, who has the patience and interpersonal skills to make his innovations clearly understandable.

Ray 3 Soul, Ray 2 Personality Examples





It's a struggle between the Ray 3 Soul's spiritually inspired intellectual comprehension/manipulation of energy. . . counteracted by the Ray 4 Personality's mind-obscuring fluctuations and conflicted psychological state.



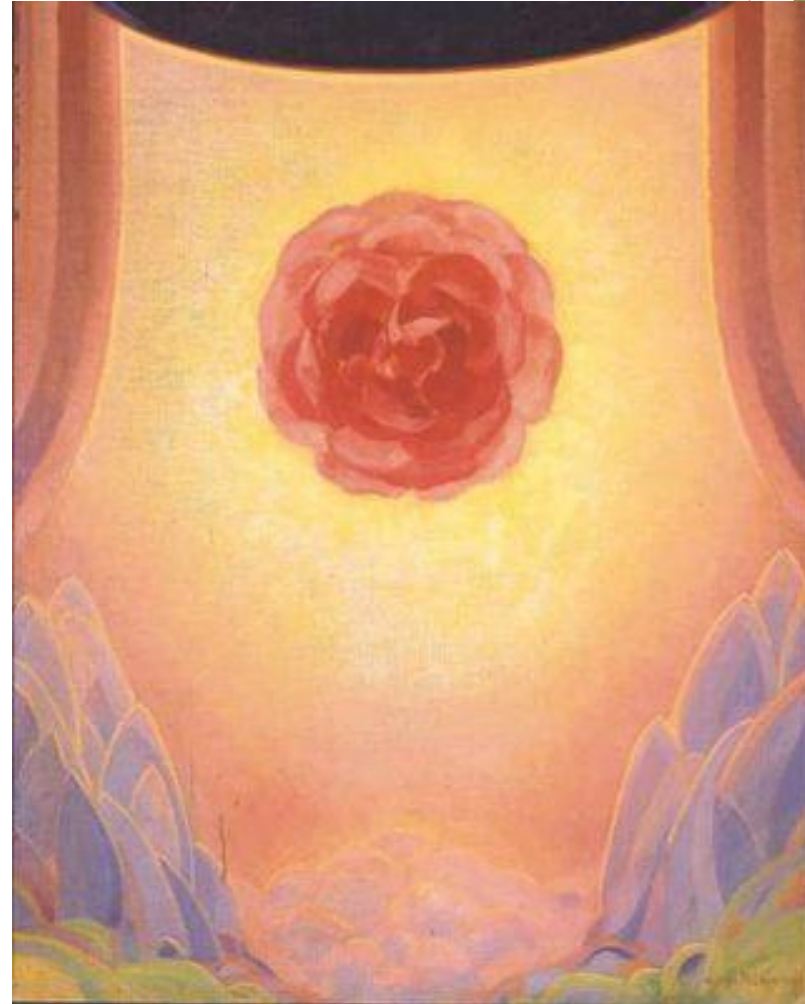
Profound intelligence/powerful abstract thought vs submersion in personal dramatics, moodiness, temperament
 Capacity for exactitude of thought vs loose analogical, free-associative thinking (inaccurate and inexact)
 Abundant energy to execute spiritual enterprises vs spasmodic activity, alternating between activity and inertia
 Natural facility in business/commerce vs self-indulgent artistic temperament unsuited to business/commerce
 Emphasis on essential pattern of thought behind appearance vs preoccupation with personal beauty/appeal

Ray 3 Soul/Ray 4 Personality Integration

- It's the task of the Soul to help the fluctuating personality become more intelligent.
 - ❖ The soul gazes at all life-from a philosophical distance and the constant changes of the personality are not of significant interest.
 - ❖ And yet the soul is frustrated in its attempts to master the world of thought and manipulate various environments of the undependability of the R4 personality.
 - ❖ The soul must teach the personality to conform to reason despite ambivalent feelings.
 - ❖ It must teach the value of logical consistency to a personality which almost prides itself on a temperamental disposition to illogic. A more cautious, provident, farseeing way of living is what is required, and towards this end, the intelligent soul must guide its rebellious, rather unmanageable personality.
- Eventually the personality realizes that moods interfere with mental functioning; that the power to think abstractly broadens the understanding.
 - ❖ Vacillation ends; the personality stands back and begins to take the long-range view.
 - ❖ World understanding begins to dawn on the personality who is beginning to value the mind over the transient pleasures of its own, irresponsible reactivity.

Integration Formulae for Rays 3 and 4: *Steadfast Stillness*

Stillness is the Ray 3 formula;
Steadfastness is the Ray 4 formula.
The composite effect for soul and
personality integration is the
personal steadfastness that
contributes to a quieting and
attuning of all aspects of the
energy system and a subsequent
alignment with Divine Intelligence
as apprehended by the soul.

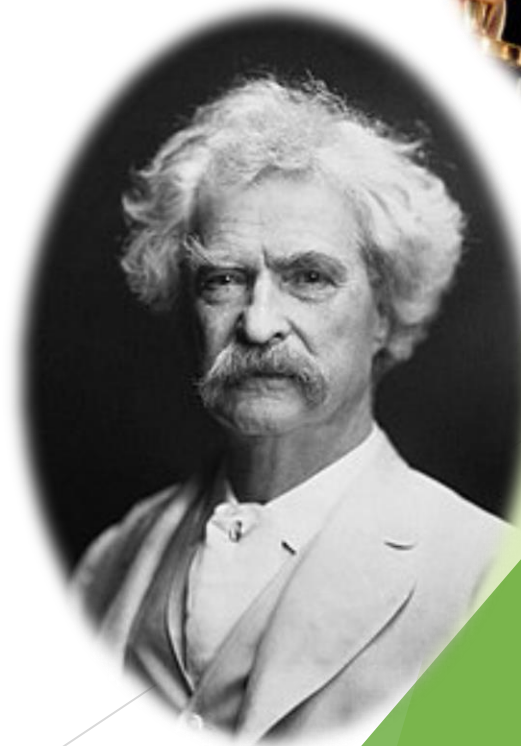


Incarnation, Agnes Pelton

Ideal Expression of a R3 Soul and R4 Personality

- Intelligent comprehension and creativity activity are expressed in the spirit of interplay and compromise.
 - ❖ The elaborately thought-out plan is effectively implemented because of a well-developed ability to give-and-take.
 - ❖ The tactician masters the instability of personal fluctuations.
 - ❖ Many creative abilities are expressed colorfully and in an entertaining manner.
 - ❖ A facility for creative, verbal expression is expressed in an aesthetically pleasing form a very imaginative combination.
 - ❖ The power to stay in motion and act continually masters the tendency towards vacillation and spasmodic, irregular action.
 - ❖ An excellent combination of business and artistic aptitudes.
 - ❖ Philosophical abstractions are presented in a delightful and engaging manner.

Ray 3 Soul, Ray 4 Personality Examples





It's a struggle between the Ray 3 Soul's need to comprehend abstract thoughts related to the divine plan . . . counteracted by the Ray 5 Personality's tendency to confine the mind to narrow, materialistic, concrete thinking.

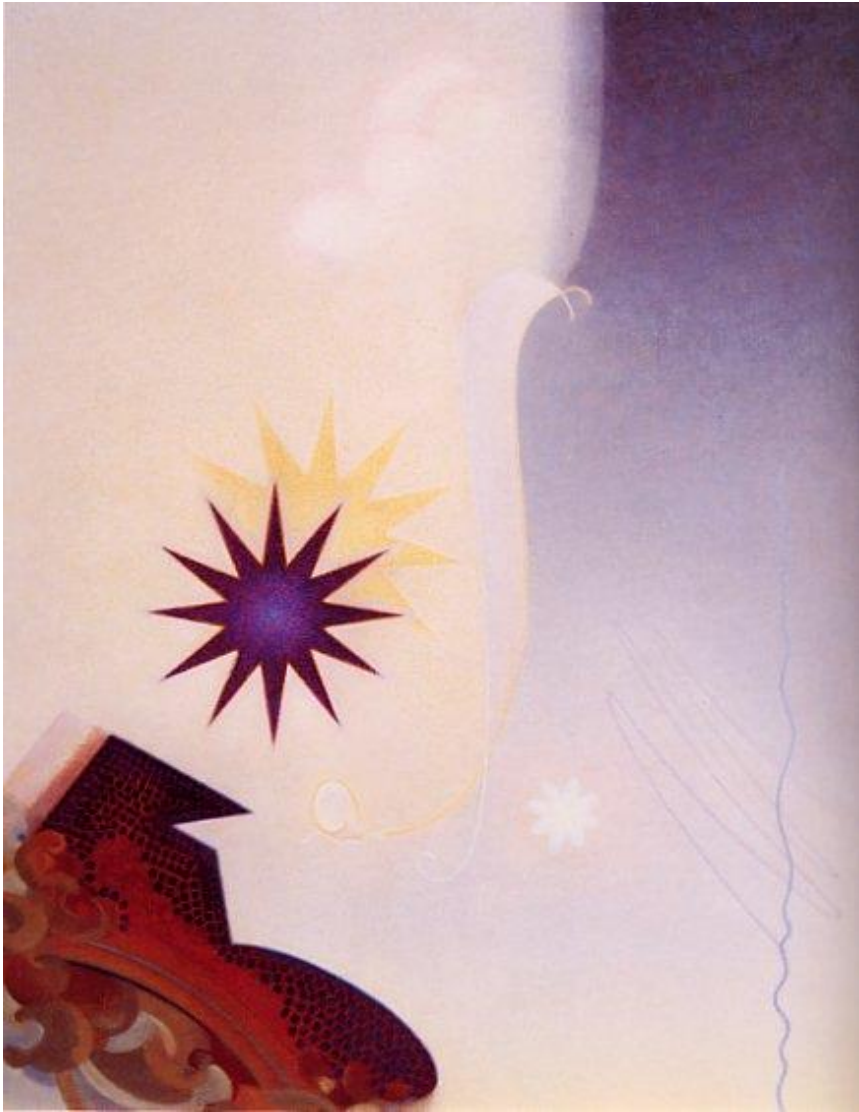


Abstract spiritual thought vs literal, concrete thought
 Powerful philosophical mentality vs nuts and bolts mentality
 Spiritual/intellectual creativity vs noncreative, descriptive/objective approach to thinking
 Capacity to handle intangible complexities vs inability to cope with intangibles
 Capacity to weave together diverse thoughts vs limitations of linear thought/fascination with separateness of things

Ray 3 Soul/Ray 5 Personality Integration

- It's the task of the R3 soul to expand the theoretical horizon of the R5 personality.
 - ❖ The soul seeks the broadest possible abstract comprehension of a wide variety of interrelated variables; the personality prefers to focus strictly and on what lies before it.
 - ❖ The personality insists on a close/concrete approach to particular objects of interest;
 - ❖ The soul, conversely, focuses upon the broad and distant perspectives revealing the general context in which things are placed.
 - ❖ The soul must teach the personality to think in terms of the *abstract meaning* of the knowledge acquired or discovered.
 - ❖ On the highest levels of mind, something akin to the essential truth *can* be discovered; the soul knows this – the concrete-thinking, fifth ray personality does not.
- Gradually it begins to dawn upon the personality that specialized knowledge, isolated from the larger context of variables is a limitation.
 - ❖ At length, the personality abandons its insistence upon exhaustive knowledge, and begins to take delight in the relativistic universe.
 - ❖ It abandons its dread of the large and the general; it accepts a new fluidity, and no longer insists upon absolutely fixed and definite mental outlines.

Integration Formulae for Rays 3 and 5: *Detached Stillness*



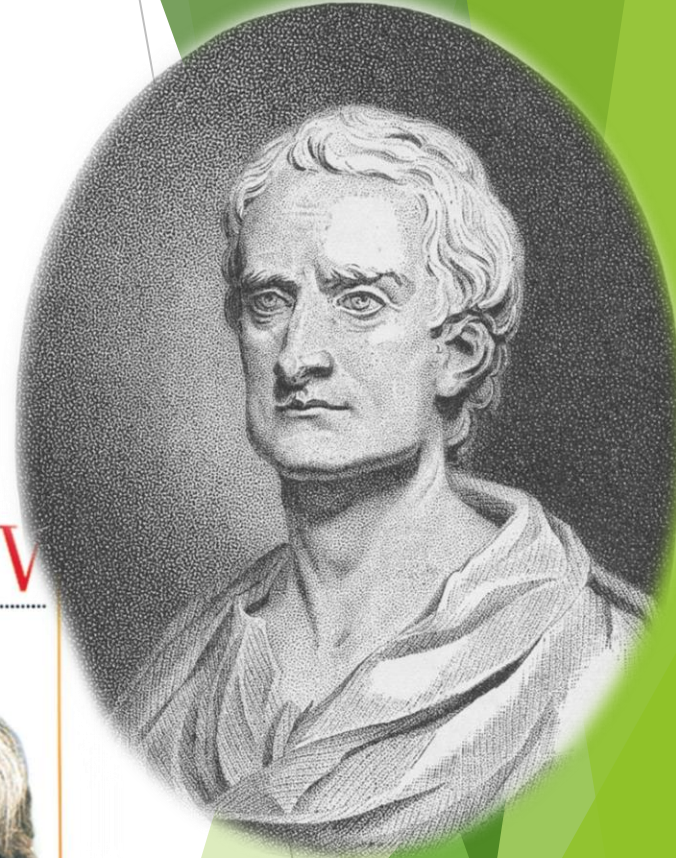
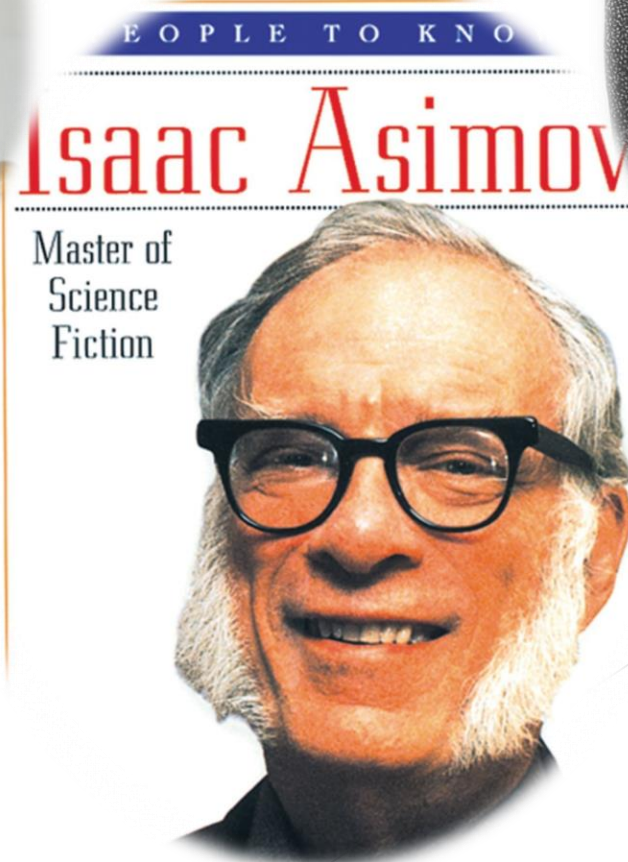
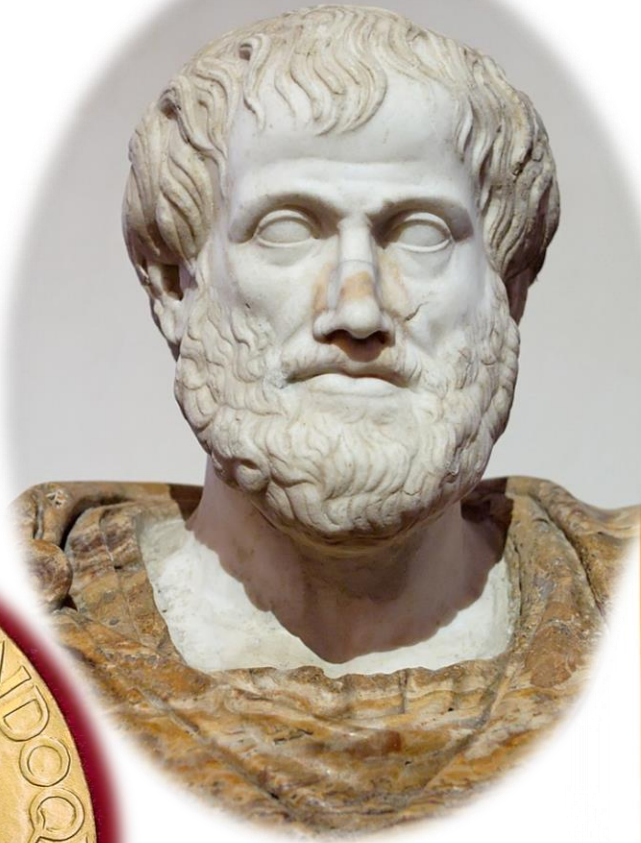
Challenge, Agnes Pelton

Stillness is the Ray 3 formula;
Detachment is the Ray 5 formula.
The composite effect for soul and
personality integration is the
detachment from excessive interest
in the modifications of material
substance that lead to that inner
quietude where the intelligent Plan
of the soul can be registered.

Ideal Expression of a R3 Soul and R5 Personality

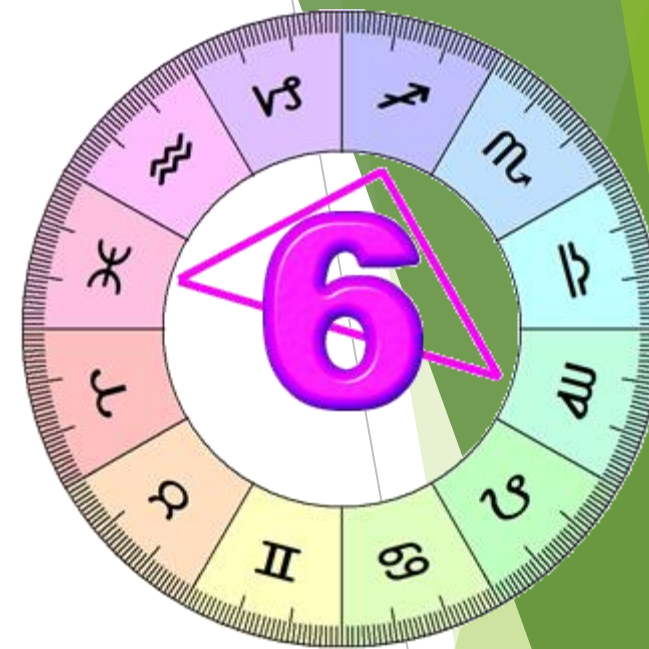
- Intelligent comprehension and creative activity are expressed with complete respect for accuracy; theory is well-supported by fact.
 - ❖ Broad conceptions are reinforced by a mastery of detailed particulars.
 - ❖ Ability to speculate about the future is supported by a head full of reliable data.
 - ❖ The ability to see the abstract blue-prints and significant trends of any issues masters the more narrow, empirical, observational approach.
 - ❖ Ideas for many utilitarian inventions can be made into technically workable actualities.
 - ❖ The power to analyze is exalted.
 - ❖ The extremely versatile and flexible thinker who knows exactly what he's talking about.

Ray 3 Soul, Ray 5 Personality Examples





It's a struggle between the Ray 3 Soul's need to express apply abstract reasoning to understanding/manifesting the plan. . . counteracted by the Ray 6 Personality's irrational personal devotion to desires, ideals and enthusiasm that prevent cooperation with the plan.



Spiritual intelligence vs all-consuming personal desire
 Preservation of intellectual values vs recourse to emotionalism
 Great capacity for abstract reasoning vs emphasis on blind, unreasoning faith
 Breadth of intellectual comprehension vs passionate narrowness
 Wise handling of economic contingencies vs impractical idealism in handling financial affairs

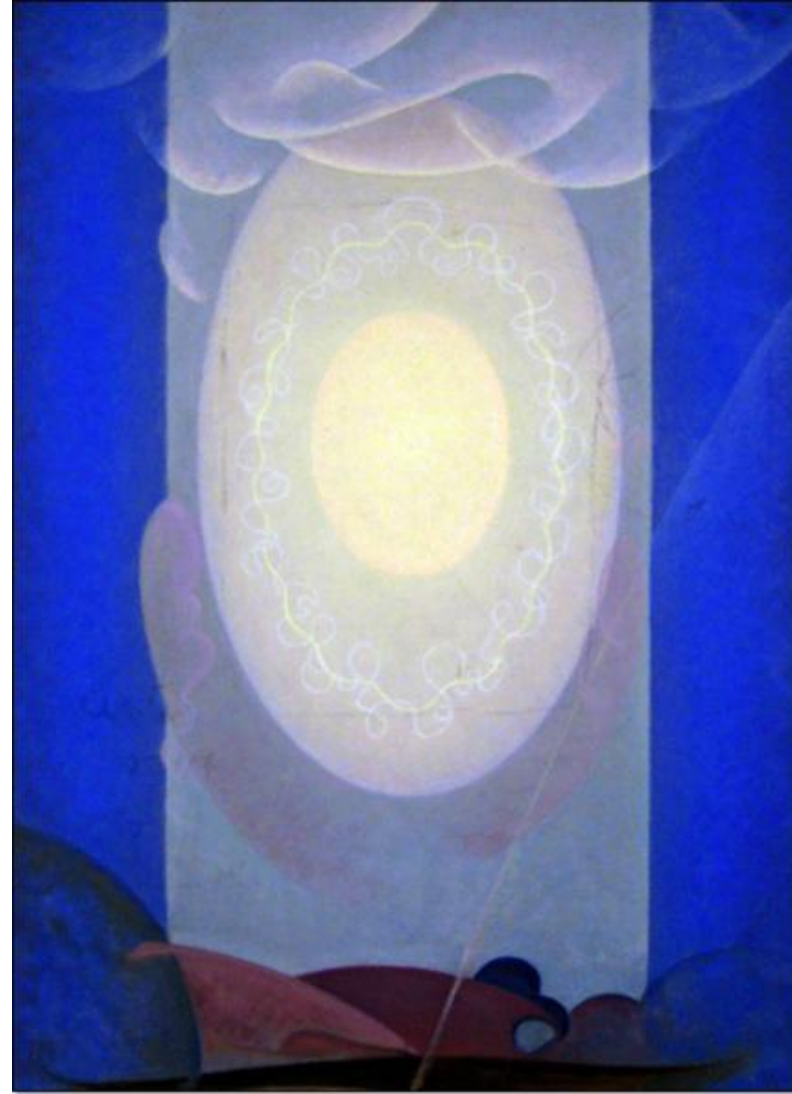
Ray 3 Soul/Ray 6 Personality Integration

- It's the task of the soul to make the personality more thoughtful and reasonable.
 - ❖ The soul with its great capacity for abstract thinking is faced with a personality who often chooses not to think; preferring to remain blinded/bewildered by idealism.
 - ❖ The soul envisions the *many*—the wide variety of interrelated energies and forces which are woven together to create divine manifestation.
 - ❖ The personality sees only the *one*—its obsessive enthusiasm of the moment.
 - ❖ It is the soul's difficult task to teach the personality to release its tenacious grip (physical or psychological) upon its one particular object of all-consuming devotion.
 - ❖ Anything to bring some respect for variety into the monochromatic personality life.
 - ❖ How can soul become the divine manipulator if personality won't release its grip on one thing.
- The personality senses that it has grown rigid through one-pointedness, that it has become *unthinking* because it had believed that all important issues were decided.
 - ❖ New learnings arise; a willingness to reserve judgment until all the variables have been considered, and a recognition of the need to see the broader picture instead of rushing off to idealize one small part of that picture.
 - ❖ The personality sees that it must restrain its zeal and begin to compare the many possible ways and means.

Integration Formulae for Rays 3 and 6:

Restrained Stillness

Stillness is the Ray 3 formula;
Restraint is the Ray 6 formula.
The composite effect for soul
and personality integration is
the personal and emotional
restraint which quiets the
personality field and allows an
intent and *still* focusing upon the
abstract realities of the Divine
Plan as comprehended by the
acutely intelligent soul

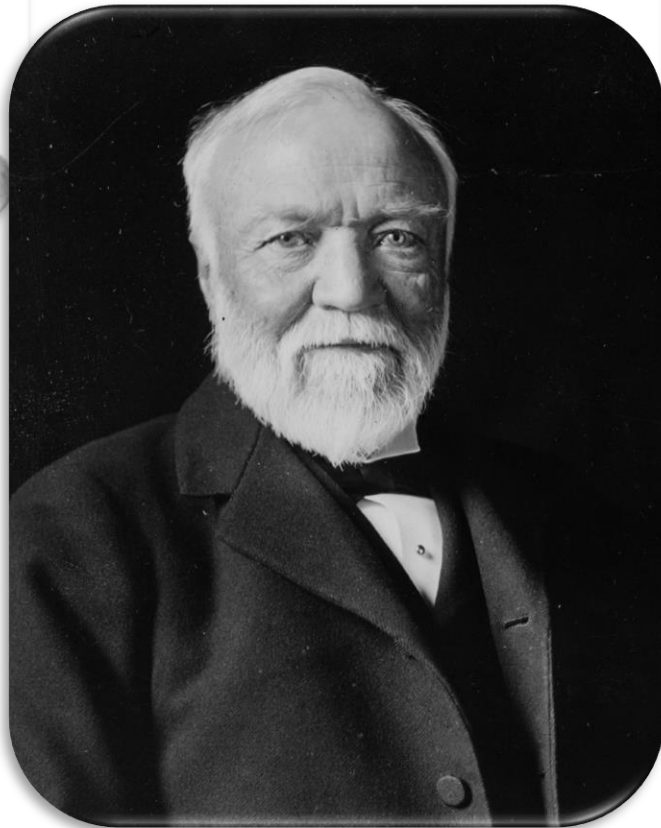


Light Center, Agnes Pelton

Ideal Expression of a R3 Soul and R6 Personality

- Intelligent comprehension, creative activity are expressed zealously.
 - ❖ Intelligence/forethought master ardent devotion, unthinking pursuit of causes.
 - ❖ The rational masters the irrational.
 - ❖ Reasonable approach moderates tendency towards unreasonable loyalties.
 - ❖ Theories and systems are promoted with zeal, with a tendency to believe too completely in one's own ideas.
 - ❖ Theological thinking is supported by great faith.
 - ❖ The wide, complex and sophisticated view masters the narrow, simple-minded view.
 - ❖ Much extroversion is possible with this combination, and a tendency to overtly impress ideas upon others.
 - ❖ This is a tremendous combination for communication.
 - ❖ There is a pronounced ability to project and adapt many ideas in the most convincing (and self-convinced) manner.

Ray 3 Soul, Ray 6 Personality Examples





It's a struggle between the Ray 3 Soul's need understand and lay plans to manifest the abstract spiritual blue prints . . . counteracted by the Ray 7 Personality's desire to build concrete forms purely for own safety/security/stability.



Acute spiritual intelligence vs conventional, personal rituals/routines
 Realization of the many ways vs acceptance of only socially approved/sanctioned ways
 Capacity for abstract/metaphysical thinking vs objective thought/action focused on external patterns
 Emphasis on the intellectual essence behind the form vs over-valuation of the form, captivated by appearances
 Remarkable cleverness and inventiveness vs locked into tradition/precedent, often dull and predictable

Ray 3 Soul/Ray 7 Personality Integration

- It's the soul's task to invest with meaning the many forms created by the personality.
 - ❖ Soul must teach personality to think about what it does, rather than simply perform established routines/rituals.
 - ❖ The consciousness of soul is broad, many things are seen in comparison; relative values emerge in perspective.
 - ❖ The soul must lift personality from its numbing cycle repetition without really knowing what one is doing.
 - ✓ The soul thinks that if there must be rituals, let the rituals be designed for intelligent ends.
 - ❖ The soul sees its personality locked into predictable forms of response and knows that evolution calls for adaptability and flexible responsiveness.
 - ❖ The soul attempts to teach the personality how to awaken to the many changes occurring around it, and how to meet those changes with forms of thought and action that result in progress.
- At length the personality realizes that there are divine patterns and designs which a new flexibility of mind can begin to reveal.
 - ❖ Above all, the personality learns that deep thinking must correct superficial doing in order to transform it into intelligent doing.

Integration Formulae for Rays 3 and 7: *Oriented Stillness*



Ascent, Agnes Pelton

Stillness is the Ray 3 formula;
Orientation is the Ray 7 formula.
The composite effect for soul and
personality integration is the
attentive spiritual orientation of the
personality which promotes an
intent and *still* focusing upon the
abstract realities of the Divine Plan
as comprehended by the soul

Ideal Expression of a R3 Soul and R7 Personality

- Intelligent comprehension/creative activity are expressed in an organized way.
 - ❖ The organization-spirit serves the execution of creatively conceived plans.
 - ❖ Freeform type of creative thinking must master a more rigid/sequential approach.
 - ❖ This is an excellent financial combination.
 - ❖ Most intelligent arrangement is executed with exactitude, excellent timing.
 - ❖ Power of brilliant conception is served by the power to manifest the conception.
 - ❖ Love of the idea itself must master the love of how the idea will appear in form.
 - ❖ Ideally, the intelligent essence of any conception is perfectly expressed in form.
 - ❖ The magical potential of this combination is very great: Ray 3 is often called the magician and Ray 7 the ritualist.

Ray 3 Soul, Ray 7 Personality Examples



Shamballa



Town Hall of the Stone Age



Town Hall of the Bronze Age



Town Hall of Middle Ages



World
Centers



Town Hall of the Industrial Age



Town Hall of the Modern Era

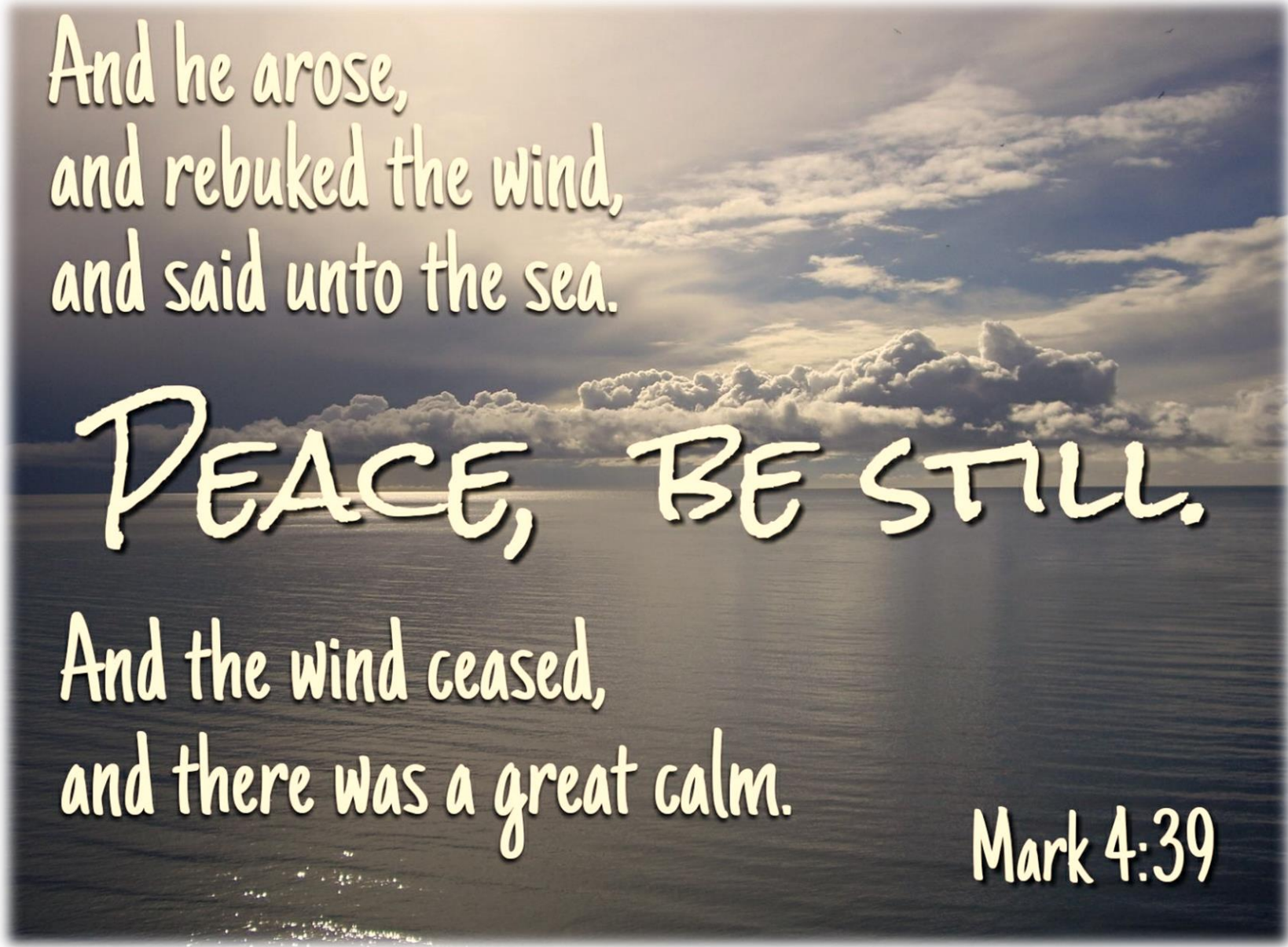


Town Hall of the Future

Humanity

Hierarchy





And he arose,
and rebuked the wind,
and said unto the sea.

PEACE, BE STILL.

And the wind ceased,
and there was a great calm.

Mark 4:39