

Ray 4 Soul/Personality Expressions

Ray 4 Soul, Ray 1 Personality

Ray 4 Soul, Ray 2 Personality

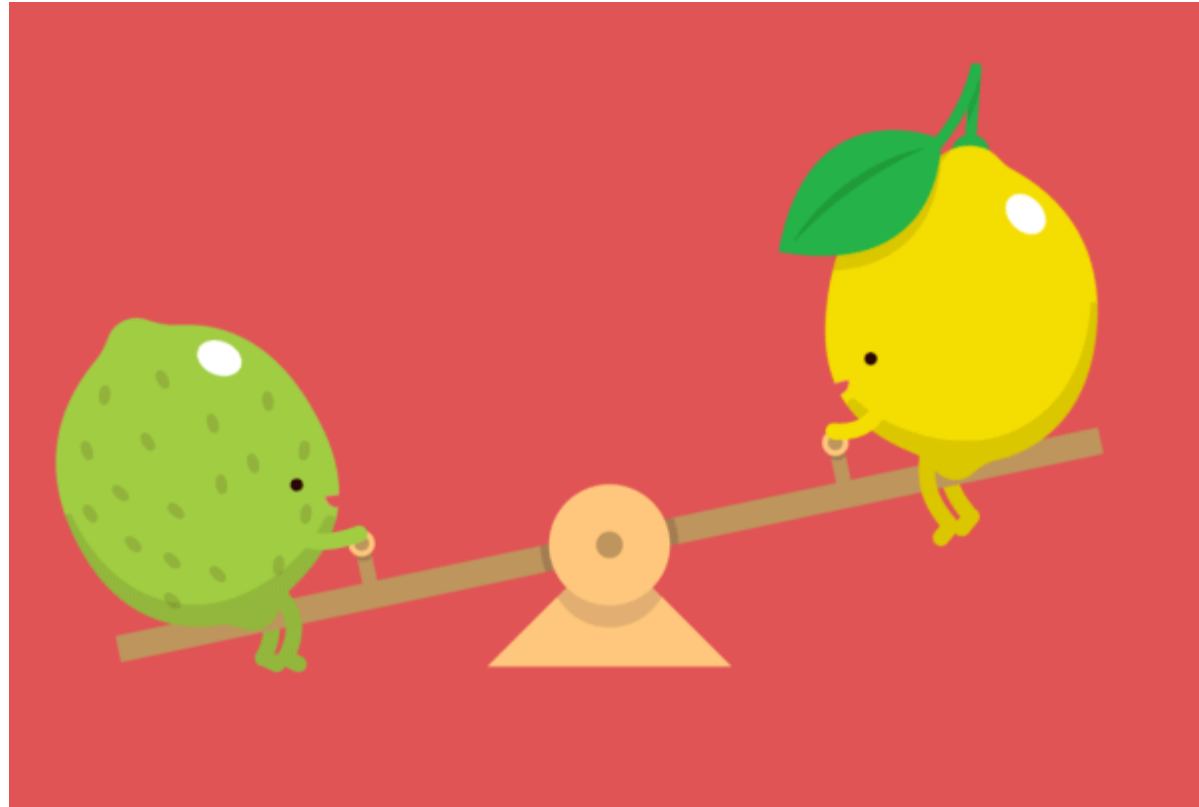
Ray 4 Soul, Ray 3 Personality

Ray 4 Soul, Ray 5 Personality

Ray 4 Soul, Ray 6 Personality

Ray 4 Soul, Ray 7 Personality

Compare and Contrast



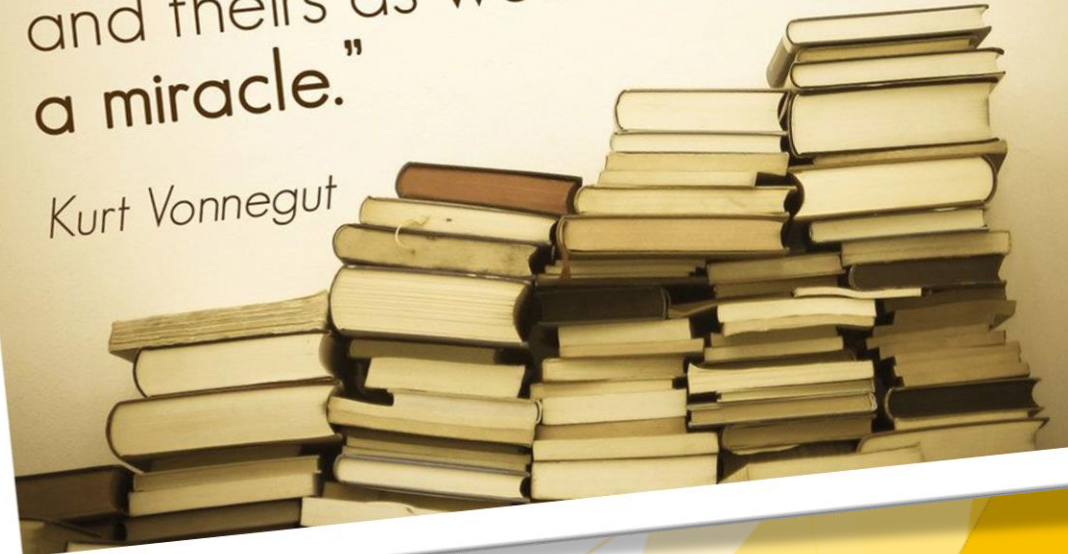
It's always a good thing, when doubts regarding your ray structure arises, to use the various tables in Tapestry of the Gods that compare and contrast the seven rays

Tips on Reading Tapestry of the Gods

- Read Vol I first – it gives the rays and their characteristics
 - ❖ As you study the rays, think of yourself and people you know well (hypothesize what rays they are)
 - ❖ Use the tables of contrasts in Vol I to help narrow down the possibilities
- When you get to Vol II – it gives the soul and personality ray combinations
 - ❖ Use the tables of contrasts in Vol II to help narrow down the soul-personality combinations
 - ❖ Focus on the ideal combination, how to use these energy combinations in the best possible way

“By reading the writings of the most interesting minds in history, we meditate with our own minds and theirs as well. This to me is a miracle.”

Kurt Vonnegut



Use Your Creative Imagination

Try out different possibilities.



Consider also
your Sun, Moon
and Rising Signs
to create an
energy-picture
of your nature.

Figure out how to integrate your soul-personality combination more fully.

Ray 4 – Harmony through Conflict



Word of Power: Two merge with One.

Ray 4 Type A – Harmony



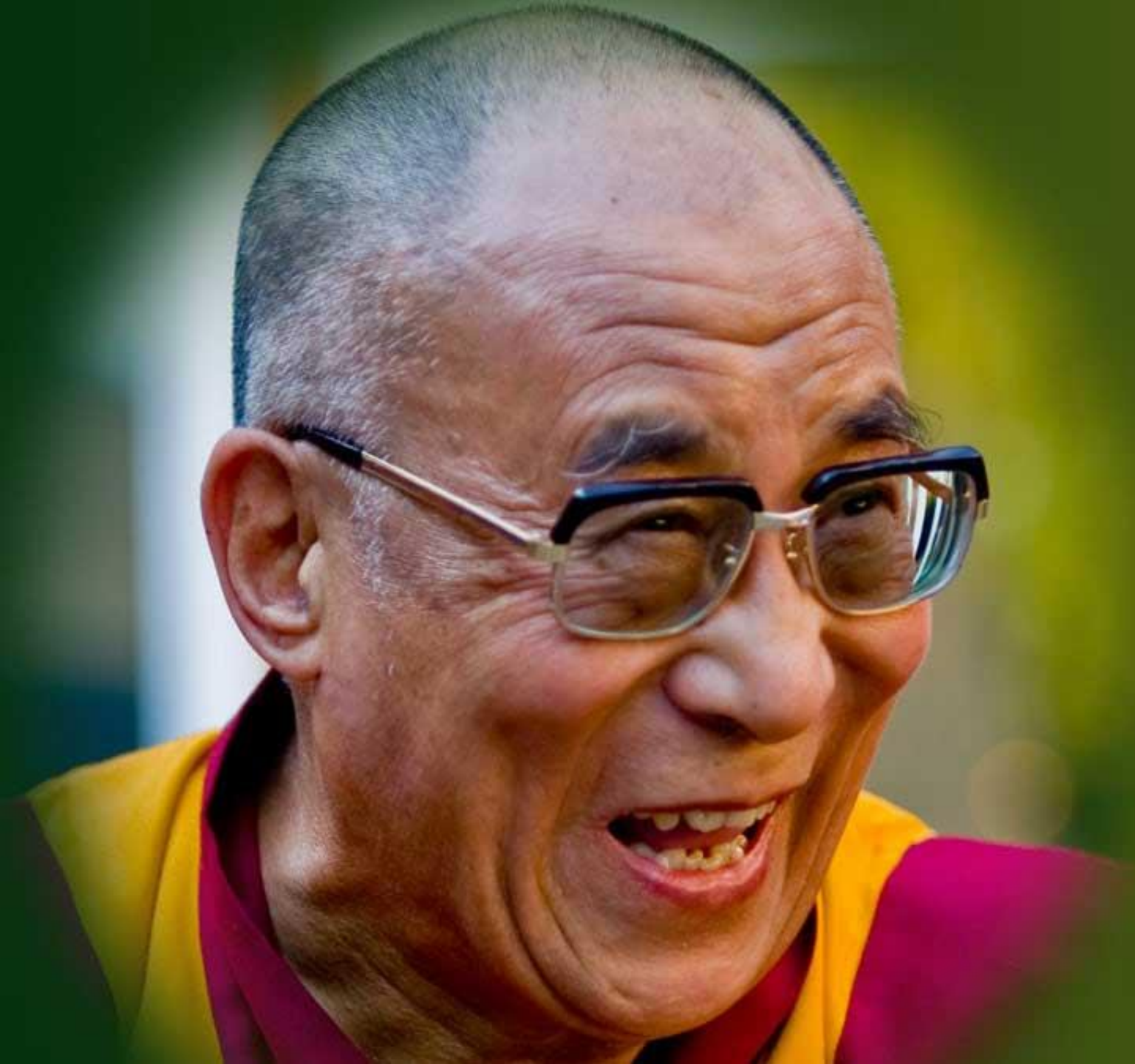
Ray 4 Type B – Conflict



You Might be a Ray 4 Soul if . . .

- You have a fighting spirit and a facility for bringing harmony out of conflict
- You have the capacity to grow spiritually and psychologically through struggle/crisis
- You love creating/expressing beauty; have artistic and aesthetic sensibilities
- You cultivate imagination and intuition as a spiritual faculty to express divinity
- You have a strong sense of drama and the ability to amuse, delight, entertain
- You love spontaneity and improvisation and like to live in the moment
- You have literary abilities via creative imagination
- You recognize beauty is truth/truth is beauty; life as art/art as life

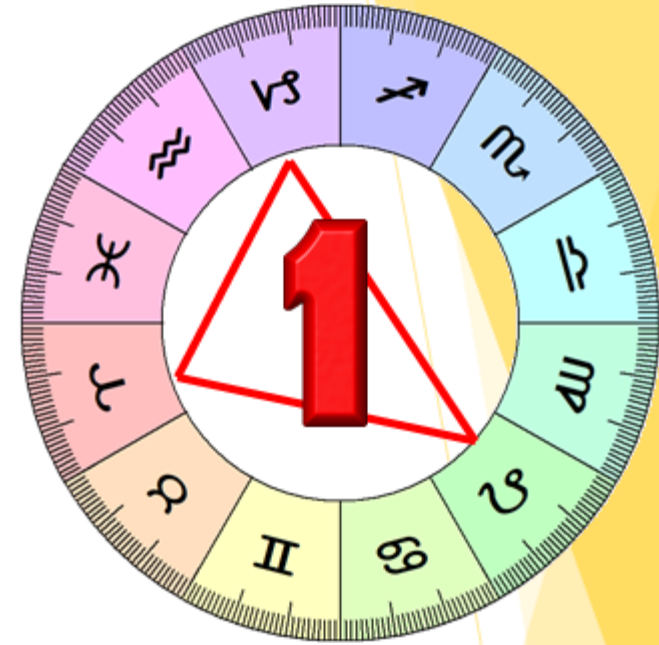
- You have pronounced attunement/rapport with others, promoting reconciliation
(mediation, bridging, making peace, achieving at-one-ment)



We live very close together,
so our prime purpose
in this life
is to help others.
And if you can't help them
at least don't hurt them.



It's a struggle between the Ray 4 Soul's need to create and express beauty/harmony . . . counteracted by the Ray 1 Personality's desire to achieve power/pre-eminence even if it means destroying interpersonal harmony.



Spiritual beauty vs personal power

Capacity for promoting reconciliation vs creation if interpersonal enmity through self-assertiveness

Exquisite sensitivity to color vs ignorance of subtle differences in color/quality

Exaltation of aesthetic creativity vs focus upon survival and self-promotion

Talent for artistic dramatization of soul qualities vs unadorned expression of personal will

Ray 4 Soul/Ray 1 Personality Integration

- It's the task of the soul to refine and sensitize the personality.
 - ❖ The cultured soul is faced with a personality that often hardens itself to fine perceptions, subtle contrasts; for when survival is at stake, power the issue, the love of the beautiful weakens the resolve.
 - ❖ The soul seeks to lift the personality toward a realization of the motivating power that lies in beauty and harmony, slowly pervading the personality with hints of the beautiful, moving inspiration possible.
 - ❖ By subjecting the personality to constant contrasts, the soul breaks down crystallized insensitivity.
 - ❖ Gradually the soul wears away the preoccupied focus upon the separated self, and the personality is lured away from its stubborn refusal to experience aesthetic loveliness.
- From another perspective, soul must teach the personality compromise is not capitulation.
 - ❖ The soul understands the value of both sides of the warring pairs of opposites; the soul triumphs when both sides win. Personality isolation is gradually overcome, and bridging become possible.
 - ❖ The soul succeeds in showing the personality that each enemy is but an aspect of its very self, and that at length (for the sake of wholeness), the enemy, too, must share in the victory.
- Through beauty, the strength of love and harmony pervade the personality—a strength arising from perfectly adjusted/harmonious) relationship.
 - ❖ The personality sees that personal isolation and self-accentuation bestowed only the illusion of power, but that there was only powerlessness.
 - ❖ Personality proceeds to dedicate its strength to the expression of beauty and harmony in all relationships.

Integration Formulae for Rays 4 and 1: *Inclusive Steadfastness*



Steadfastness is the Ray 4 formula; *Inclusion* is the Ray 1 formula. The composite effect for soul and personality integration is the inclusive personality attitude which promotes peace on the outer planes, and a steadfast and harmoniously balanced spiritual orientation upon the inner

Ideal Expression of a R4 Soul and R1 Personality

- The urge to create harmony and beauty is expressed forcefully and, frequently, may be imposed.
 - ❖ The individual desires peace so much that he may try to make it happen by the force of his personal will.
 - ❖ This is potentially a very temperamental combination—the temperamental artist who egoistically insists upon his own means of expression.
 - ❖ The urge to seek a righteous compromise eventually masters the tendency to impose the will.
 - ❖ Strength and steadfastness serve the task of revealing beauty and creating loveliness.
 - ❖ The strong individual is able to endure and persist in his soul-appointed task of creating harmonious linkages between diverse individuals.
 - ❖ The linkages may be within the psyche as well, and much personal strength will also be required if the task is to be completed.

Ray 4 Soul, Ray 1 Personality Examples





It's a struggle between the Ray 4 Soul's need to express the vibrancy of divine beauty . . . counteracted by the Ray 2 Personality's desire to avoid any kind of disturbance in hope of sustaining a comforting calm.



Spiritual beauty vs personal love

Life as art and art as life vs fearful avoidance of extremes that artistic living demand

Spirituality of artistic passion vs a calm, too tranquil, too unexcitable disposition

Quick, highly imaginative psyche vs tendency towards quiet inertia

Courage to confront opposition in cause of peace vs personal timidity and fear of confrontation

Ray 4 Soul/Ray 2 Personality Integration

- It's the task of the soul to enliven the personality, rendering it more vibrant and exciting.
 - ❖ The soul is thrilled by the great color and contrast of the divine spectacle, and animated by a love for expressing the omnipresent beauty it perceives. The interior life of the soul is filled with the tensions of contrasting polarities, and he must resolve these tensions through self-expression.
- The personality, however, is often deliberately unresponsive; it does not wish to respond to the soul's call for an interior struggle which leads to the expression of beauty.
 - ❖ The personality does not wish to bear the pain of revelation. It becomes necessary, then, for the soul to find ways to disrupt the stultifying serenity in which the personality hides.
 - ❖ The soul seeks to guide the personality into a state of willing vulnerability to life's dynamic polarities, so that the joy and pain of the drama of the spiritual form can be expressed.
- The issue arises: shall life be calm and comfortable, or a thrilling, yet agonizing, experience of bringing painful dissonance into harmony?
 - ❖ Increasingly, the calm and easy-going way is seen as the shallow way. The unity of an unruffled calm gives way to the promise of a new unity of harmonized polarities—a unity filled with beauty.

Integration Formulae for Rays 4 and 2: *Centralized Steadfastness*

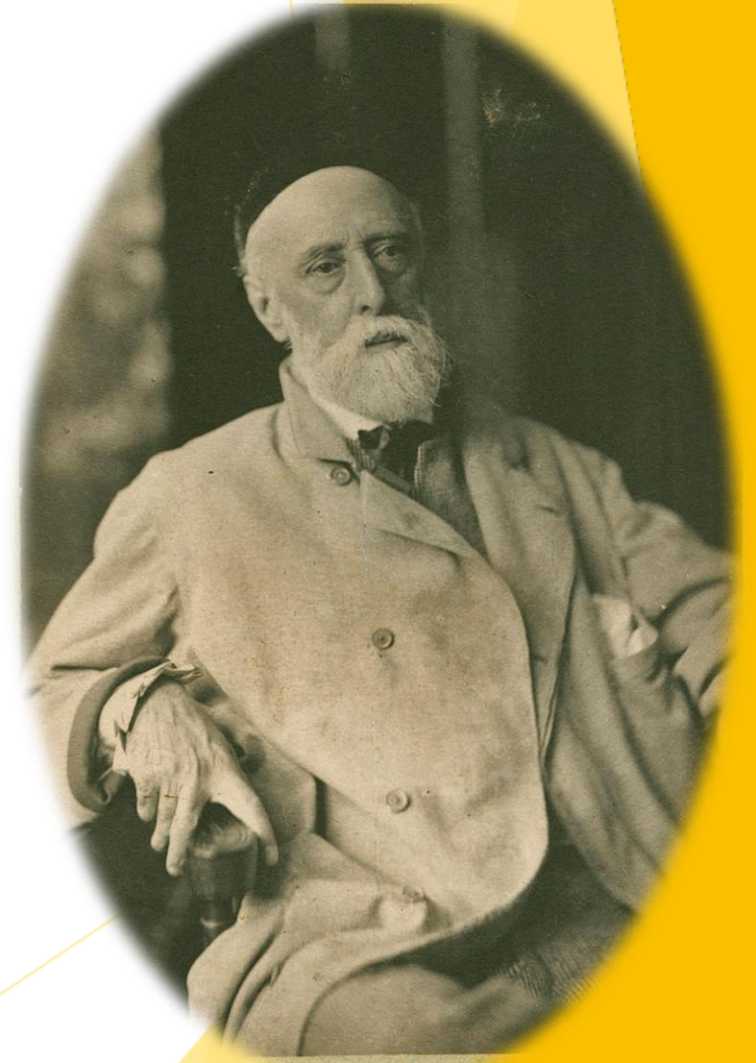


Steadfastness is the Ray 4 formula; *Centralization* is the Ray 2 formula. The composite effect for soul and personality integration is the centered personality attitude which helps the inner man achieve a steadfast, harmoniously balanced spiritual orientation

Ideal Expression of a R4 Soul and R2 Personality

- Ideally, The urge to harmony and beauty is expressed serenely and lovingly.
 - ❖ The struggle, stress and strain incident to the process of harmonizing situations and relationships prevail over the tendency to be nice
 - ✓ A tendency stemming from the motive of the love of being loved.
 - ❖ Friction is endured, if friction is the only way to achieve peace, unity and true interplay.
 - ❖ The give-and-take involved in the process of equilibrating masters a pleasant contentedness.
 - ❖ Kindness, and personal pleasantness serve the at-oneing process.
 - ❖ Magnetism serves a refined aestheticism.

Ray 4 Soul, Ray 2 Personality Examples





It's a struggle between the Ray 4 Soul's need to remain open to intuitive inspiration . . . counteracted by the Ray 3 Personality's cynical determination to calculate all possible moves, leaving no room for higher inspiration.



Spiritual beauty vs personality-centered intellectualism
Profound aesthetic expressivity vs intelligence used as a tool of trivial expediency
Celebrating life as a great drama vs cloaking the drama of life with over-intellectualization
Embodiment of aesthetic elegance vs crude commercialism and refinement
Finesse in harmonizing people vs manipulating people due to lack of understanding of interpersonal harmony

Ray 4 Soul/Ray 3 Personality Integration

- It's the task of the soul to render the personality sensitive to beauty and to intuition.
 - ❖ The soul knows the limitations of intellect; this personality doesn't, relying overmuch on it.
 - ❖ The soul, which ever seeks to remain open to artistic inspiration, is faced with a personality which can easily desensitize itself to beauty through excessive thought and overactivity.
 - ❖ The soul, ever intent on cultivating refinement and expressivity, seeks to redirect an intellect which rarely, if ever, pauses to appreciate any form of loveliness.
- The soul is on intimate terms with beauty; the personality manipulates the mental, emotional and physical contents of life—moving them around according to self-interest.
 - ❖ Not really pausing to contemplate the beauty or essential quality of that being rearranged.
 - ❖ Only in moments of attentive stillness can it be realized that a thing of beauty is a joy forever; the soul tries to teach its restless personality to take those moments.
- Personal activities gradually evaluated and refined, and the intellect is rendered up as the servant of the urge to beautification and harmonization.
 - ❖ The personality turns inward, and when aesthetic impressions are received, they are rendered intelligently vocal or translated into a variety of expressions.
 - ❖ The new life is one of greater risks and spontaneity and fewer manipulative controls, but it is a *vibrant* life, engaging *all* human faculties in a vitally expressive outpouring.

Integration Formulae for Rays 4 and 3: *Still Steadfastness*



Steadfastness is the Ray 4 formula; *Stillness* is the Ray 3 formula. The composite effect for soul and personality integration is the stillness of the personal consciousness which contributes to a centering of the inner consciousness steadfastly between the warring pairs of opposites

Ideal Expression of a R4 Soul and R3 Personality

- The urge to harmony and beauty is expressed with creative intelligence and adaptability.
 - ❖ This combination yields the artist who can express himself along a great diversity of channels.
 - ❖ Righteous compromise masters manipulateness and slyness.
 - ❖ The urge to create beauty masters the tendency towards economy, expediency, efficiency and mere utilitarianism.
 - ❖ The task of linking many elements can be achieved innovatively, and in a great variety of ways.
 - ❖ The love of beauty masters the love of business, and then uses business abilities to further aesthetic aims.
 - ❖ The ability to devise many stratagems serves the urge to achieve conflict resolution.

Ray 4 Soul, Ray 3 Personality Examples





It's a struggle between the Ray 4 Soul's intuition revealing the mystery, synthesis of beauty . . . counteracted by the Ray 5 Personality's separative, common-sensical intellect focusing on the fragmentary and the ordinary.



Spiritual beauty vs concrete knowledge

Divine incentive to harmonize/synthesize vs tendency to create cleavages through over-analysis

Vivid realization/expression of the divinity of play vs harsh criticism of everything that seems foolish or nonsensical

Great magnetic charm vs flat, non-magnetic personality radiation

Highly refined intuitive apprehension vs skepticism/disbelief that limits the function of the intuition

Ray 4 Soul/Ray 5 Personality Integration

- It's the task of the soul to animate personality by loosening its rational-analytical position.
 - ❖ The flexible and harmonizing soul is faced with a personality in the grip of an inflexible, concrete-minded thought process. The soul seeks to teach the personality the art of at-one-ing through bridging, fusing and unifying, but this is difficult, because the personality's aim is to determine the distinctness of things, and to keep that distinctness clearly in mind.
- Intuition is the psychospiritual organ which eradicates the notion of essential difference, but the rational/analytical personality discounts intuition as imprecise and unreliable.
 - ❖ Soul begins to radiate an influence, gradually alerting personality to life's polarities; this starts to change a colorless/monotonous quality of consciousness into something far more vibrant.
 - ❖ Intuition begets to master intellect.
 - ❖ The sense of drama gradually overcomes flat, unresponsive affect.
 - ❖ The realization and expression of beauty enlivens the ordinariness of the personality's prosaic, matter-of-fact approach.
- As the personality relaxes its mental grip, and allows itself to be surprised by loveliness, the poverty of its narrow, erstwhile perspective is seen for what it is.
 - ❖ The personality, now increasingly soul-infused, begins to know, or rather intuit and express, the beauty which is transcendently inaccessible to strictly rational processes.

Integration Formulae for Rays 4 and 5: *Detached Steadfastness*

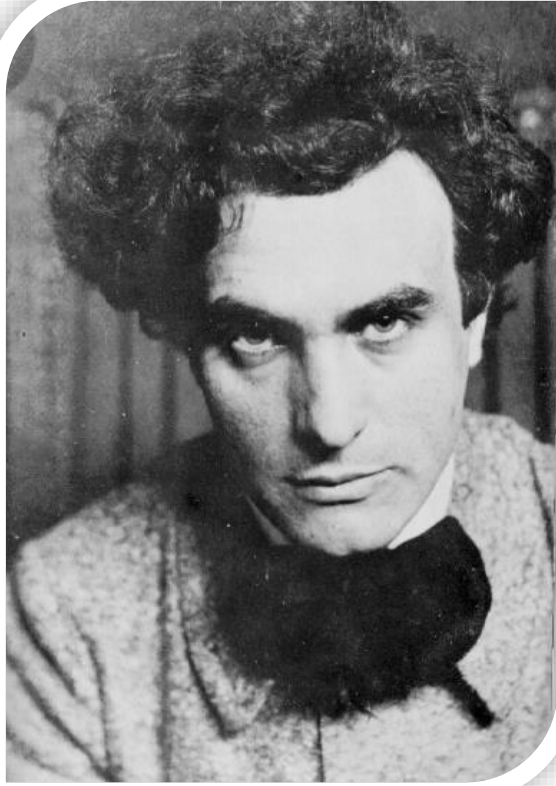


Steadfastness is the Ray 4 formula; *Detachment* is the Ray 5 formula. The composite effect for soul and personality integration is achieving detachment from a preoccupation with the modifications of matter, helping bring peace, steadiness, balance and harmony to a tumultuous psyche

Ideal Expression of a R4 Soul and R5 Personality

- The urge to harmony/beauty is expressed with considerable technical know-how.
 - ❖ The sense of drama masters matter-of-factness.
 - ❖ Perfect knowledge of the technical means of expression serves to enhance the quality of that which is expressed.
 - ❖ Technology serves art. Art and machine are united.
 - ❖ Peace, harmony and mutual interplay are served by the fruits of scientific inquiry and technical innovation.
 - ❖ Intuitive, buddhic consciousness is supported by hard-headed, rational-mindedness.

Ray 4 Soul, Ray 5 Personality Examples





It's a struggle between the Ray 4 Soul's need for the realization and expression of divine proportion . . . counteracted by the Ray 6 Personality's fanatical, desire-driven over-emphasis that destroys all balance and proportion.



Expression of spiritual beauty vs fanaticism and the ugliness of excess

Mastery of the art of righteous compromise vs ardent, emotionally-motivated refusal to compromise

Wise recognition that man is human as well as divine vs idealistic denunciation of man's human, fallible nature

Joyful expression of humor/playfulness of the divine child vs inability to laugh at oneself and to play

Perfected creative living through skill-in-action vs one-pointed focus on living normally rather than creatively

Ray 4 Soul/Ray 6 Personality Integration

- It's the task of the soul to bring moderation, balance and beauty to the personality.
 - ❖ Soul seeks to demonstrate to personality that there are two sides to every issue in this world of contrasting polarities, but personality sees only one (and pursues it with undue emphasis).
 - ❖ The soul must teach the personality alternation—a periodic relaxation of its focused intensity, so that a reciprocal give-and-take relationship with life can be established.
- Every stick has two ends; the personality, however, ignores polarities, especially the lower pole (which is often repudiated), and this unbalances the psyche.
 - ❖ The soul seeks to transform a soaring, vertical line into a four-quartered mandala, thus bringing the various opposites” into a holistic relationship with each other.
 - ❖ The personality, however, must be convinced of the beauty of contrast before this rounding out can be achieved.
- At length personality looks around and sees the presence of beauty everywhere.
 - ❖ It relaxes its tension and simply appreciates the present loveliness. The personality broadens through the devotion to omnipresent beauty.

Integration Formulae for Rays 4 and 6: *Restrained Steadfastness*

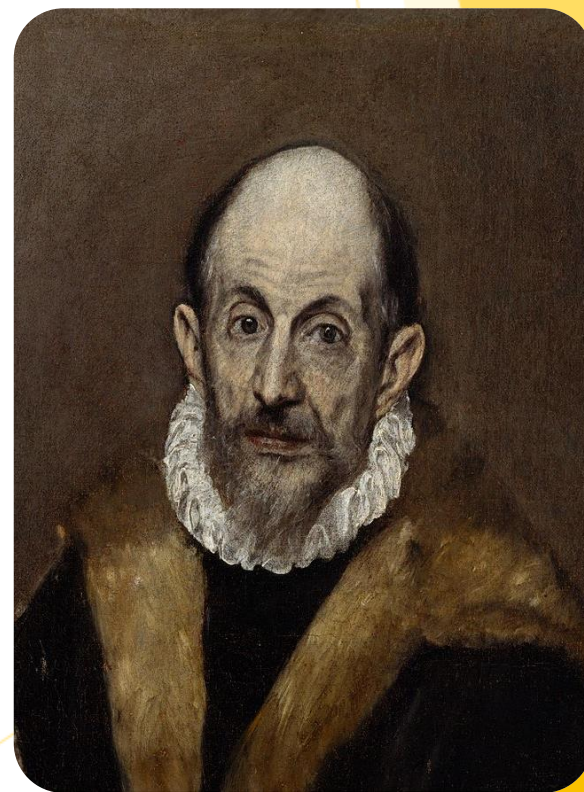
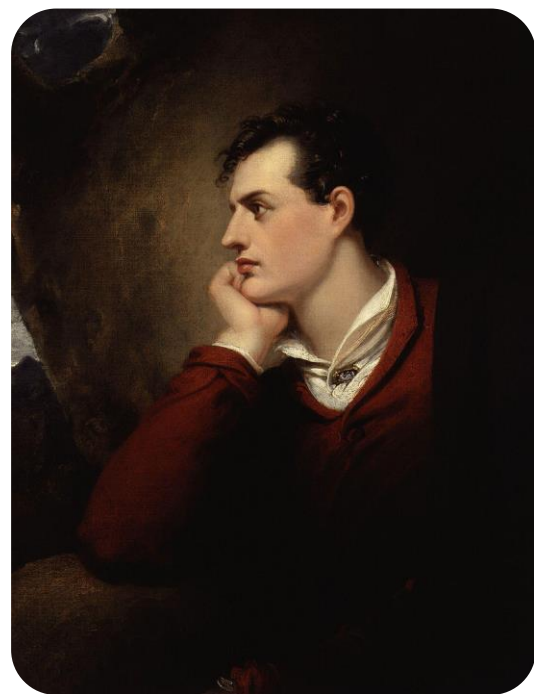


Steadfastness is the Ray 4 formula; *Restraint* is the Ray 6 formula. The composite effect for soul and personality integration is the restraint of personal desire and aspiration which promotes a harmoniously balanced and steadfast orientation within the inner psyche

Ideal Expression of a R4 Soul and R6 Personality

- The urge to harmony and beauty is expressed fervently and zealously.
 - ❖ The expression of beauty becomes one's greatest ideal.
 - ❖ The artistic urge expresses itself through religious themes.
 - ❖ Aesthetic pursuits become a passion.
 - ❖ The spirit of accommodation for the sake of harmony masters one-pointed, conflict-producing narrowness.
 - ❖ Ability to compromise and see the other's point of view supersedes separative emotional loyalties.
 - ❖ The ability to be bi-partisan prevails over partisan devotions.
 - ❖ Everything is given or sacrificed to serve one's art, or one's conception of beauty.
 - ❖ The devoted person who becomes a martyr in the cause of peace.

Ray 4 Soul, Ray 6 Personality Examples





It's a struggle between the Ray 4 Soul's need for improvisation and spontaneity in order to harmonize dissonance . . . counteracted by the Ray 7 Personality's desire to think and behave in established ways leading to predictability and security.



Spiritual beauty vs strict personal order

Soul-inspired spontaneity vs personal rigidity and fear of spontaneity

Highly imaginative vs imagination limited by established forms and conditioned responses

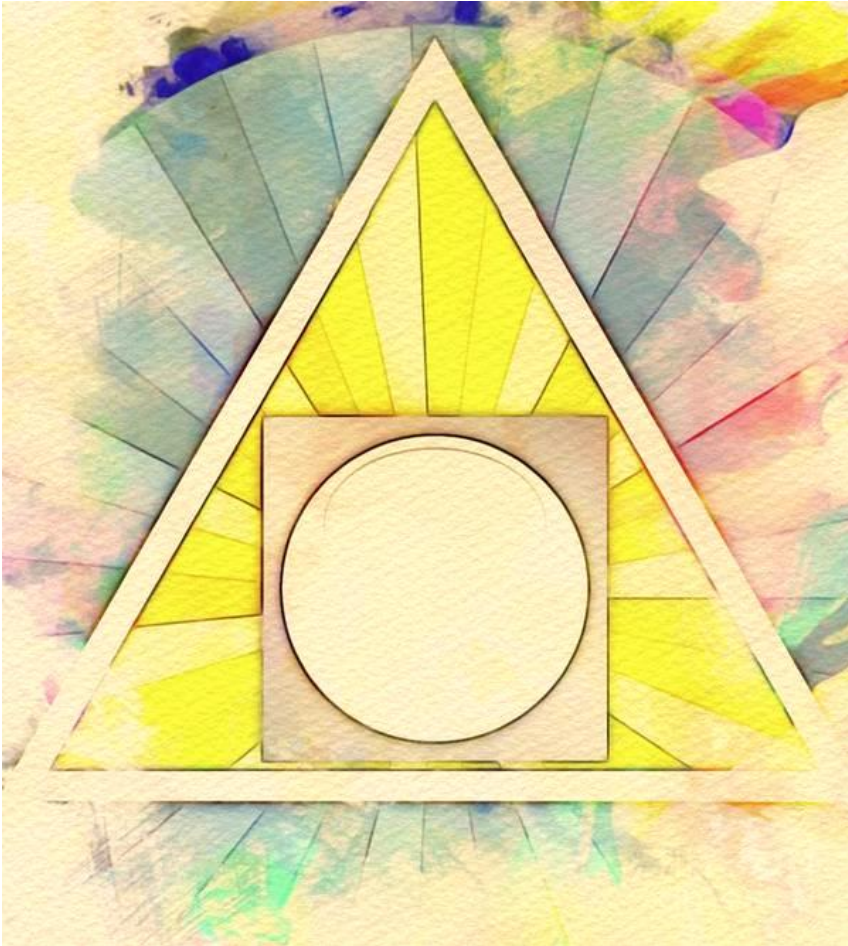
Easily accesses intuitive inspiration vs follows convention/precedent rather than trust inner sources

Freely interactive with others vs controlling/standardizing own behavior or that of others

Ray 4 Soul/Ray 7 Personality Integration

- It's the task of the soul to create a willingness to experiment with new experiences.
 - ❖ The soul remains open to the muse, does not systematically plan, and awaits the descent of intuitive gifts which present new ways of revealing divinity.
 - ❖ Personality, however, attempts to leave nothing to chance. The soul lives open to revelation; the personality creates a closed system in which everything is under control.
 - ❖ The soul, knowing that divine gifts often arrive as a surprise, is frustrated by the personality's refusal to remain creatively unorganized.
- Slowly the soul infiltrates the personality with contrasting currents of thought which demand an unexpected response, a change of pace.
 - ❖ The soul seeks to challenge the regularity of the personality with elements of unpredictability.
 - ❖ Stress/strain experienced as the personality tries to cope with life's contrasting, bipolar energies will disrupt the self-protective routine.
 - ❖ From soul perspective, if the personality continues to experience business as usual, it is not spiritually alive, and is no fit vehicle to receive startling impressions of divine beauty.
 - ❖ Personality gradually discovers that things may work out even better if they are not exactly and rigidly arranged in advance; experiencing the dread of not knowing how things will work out is the price to be paid by the personality as it seeks to approach the mystery of divine beauty.

Integration Formulae for Rays 4 and 7: *Oriented Steadfastness*



Steadfastness is the Ray 4 formula; *Orientation* is the Ray 7 formula. The composite effect for soul and personality integration is the attentive, spiritual orientation of the personality which reinforces the steadfast and harmoniously balanced perspective of the inner man.

Ideal Expression of a R4 Soul and R7 Personality

- The urge to harmony and beauty is expressed through an exquisite sense of form.
 - ❖ The love of color masters the love of structure. Beauty is expressed in perfect form—art in excelsis.
 - ❖ Peace is made manifest and is perfectly instituted and administered.
 - ❖ This combination brings perfected interplay, rhythmically and harmoniously manifested.
 - ❖ The understanding of beauty-in-relationships is expressed in concrete symbols.

Ray 4 Soul, Ray 7 Personality Examples







The steadfast love of
the LORD never
ceases; His mercies
never come to an
end; they are
new every
morning; great is
Your faithfulness.
Lamentations 3:22,23