

Ray 5 Soul/Personality Expressions

Ray 5 Soul, Ray 1 Personality

Ray 5 Soul, Ray 2 Personality

Ray 5 Soul, Ray 3 Personality

Ray 5 Soul, Ray 4 Personality

Ray 5 Soul, Ray 6 Personality

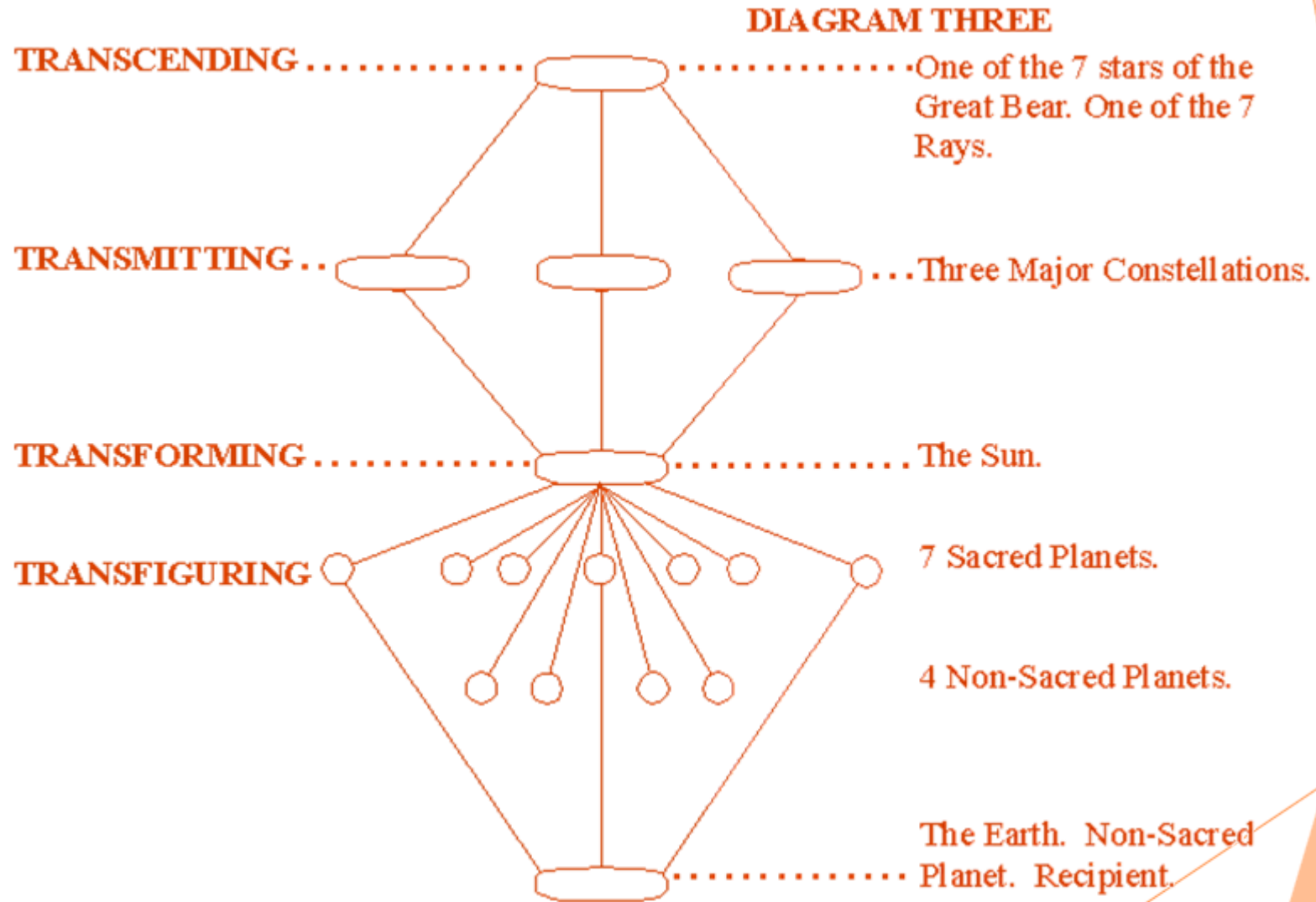
Ray 5 Soul, Ray 7 Personality

Ursa Major is the Source of the Seven Rays



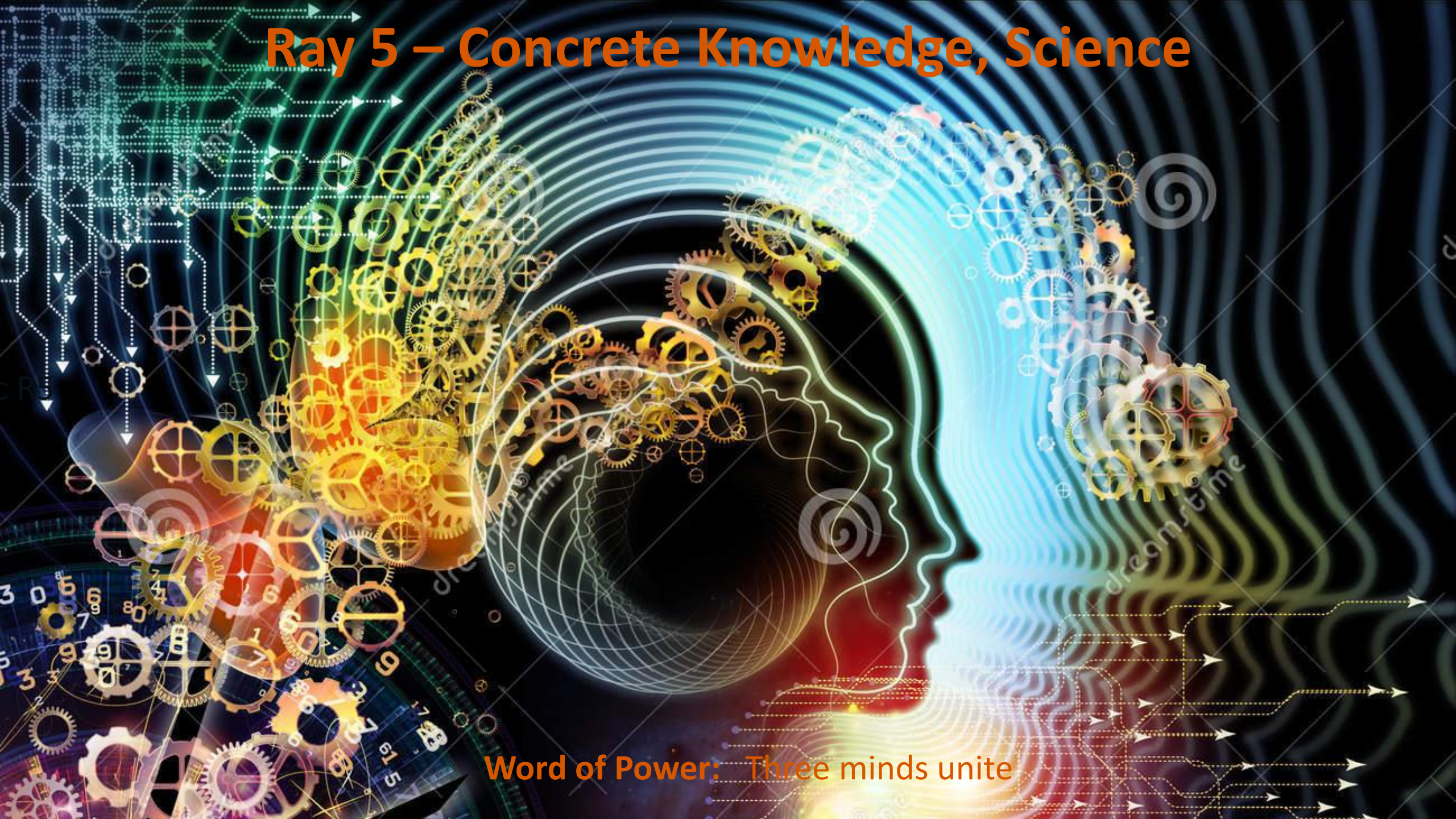
“There is nothing in the whole solar system, at whatever stage of evolution it may stand, which does not belong and has not always belonged to one or other of the seven rays.”

Cosmic Energies and Transformation





Ray 5 – Concrete Knowledge, Science



Word of Power: Three minds unite

Ray 5 Type A – Concrete Knowledge



Ray 5 Type B – Science

Chemically, DNA consists of two long polymers of simple units called nucleotides, with phosphates made of sugars and phosphate groups joined by ester bonds. These two strands run in opposite directions to each other and are therefore anti-parallel. Attached to each sugar is one of four types of molecules called bases. It is the sequence of these four bases along the backbone that encodes information. This information is read using the genetic code, which specifies the sequence of the amino acids within proteins. The code is read by copying stretches of DNA into the related messenger RNA in a process called transcription.

Within cells, DNA is organized into long structures called chromosomes. These chromosomes are duplicated before cells divide, in a process called DNA replication. Eukaryotic organisms (animals, plants, fungi, and protists) store most of their DNA inside the nucleus and some of their DNA is organized, as mitochondria or chloroplasts. It is organized, as mitochondria or chloroplasts. It is organized, as mitochondria or chloroplasts. It is organized, as mitochondria or chloroplasts.

When the chromosomes are duplicated, the DNA is organized into long structures called chromosomes. These chromosomes are duplicated before cells divide, in a process called DNA replication. Eukaryotic organisms (animals, plants, fungi, and protists) store most of their DNA inside the nucleus and some of their DNA is organized, as mitochondria or chloroplasts. It is organized, as mitochondria or chloroplasts. It is organized, as mitochondria or chloroplasts.

DNA is a long molecule that is made up of two strands. The strands are made of a sugar-phosphate backbone and nitrogenous bases. The strands are held together by hydrogen bonds between the bases. The bases are adenine, thymine, guanine, and cytosine. Adenine pairs with thymine and guanine pairs with cytosine. The sequence of the bases along the strands is the genetic code.

The structure of DNA is a double helix. The two strands are twisted around each other. The bases are attached to the strands and are held together by hydrogen bonds. The structure is called a double helix because it looks like a twisted ladder.

The DNA molecule is made of two strands. The strands are made of a sugar-phosphate backbone and nitrogenous bases. The strands are held together by hydrogen bonds between the bases. The bases are adenine, thymine, guanine, and cytosine. Adenine pairs with thymine and guanine pairs with cytosine. The sequence of the bases along the strands is the genetic code.

DNA exists in many possible conformations that include A-DNA, B-DNA, and Z-DNA forms, although only B-DNA and Z-DNA have been directly observed in functional organisms [10]. The conformation that DNA adopts depends on the location level, DNA sequence, solvent conditions, and direction of supercoiling. Chemical structure of the bases, the type and concentration of metal ions, as well as the presence of proteins, all affect the conformation [21].

The first published reports of A-DNA X-ray diffraction patterns—and also B-DNA used analysis based on Patterson transforms that provided only a limited amount of structural information for several years of DNA [22]. An alternate analysis was provided by Wilkins et al. in 1953, for the 1953 Nobel Prize in Chemistry. The X-ray diffraction pattern of DNA is a double helix [7].

Although the B-DNA form is most common under the conditions found in cells, it is not a well-defined conformation but a family of related DNA conformations [23] that occur at the high hydration levels present in living cells. Their corresponding X-ray diffraction and scattering patterns are characteristic of molecular assemblies with a significant degree of flexibility [23].

random | plasmid

You Might be a Ray 5 Soul if . . .

You are relentless in scientific pursuit of pure truth

You have a highly developed power of investigation, analysis, discrimination

You have a keen and focused intellect and meticulous attention to detail

You have a thorough understanding of cause-and-effect relationships

You have the facility for mathematical calculation or mechanical ability

You are steadfast concentration and undivided mental focus

You insist on preserving the objective point of view; are fair-minded and un-biased

Spiritual power to unite 3 minds (lower mind, son of mind, higher mind)

You search constantly for scientific improvements in methods and procedures

(realization of the broader spiritual implications of scientific discovery)



Vocational Indicators: Positions where great accuracy and a factual, technical and objective point of view are required. Science, research, engineering, mechanics, accounting, all kind of technical specialties, etc.



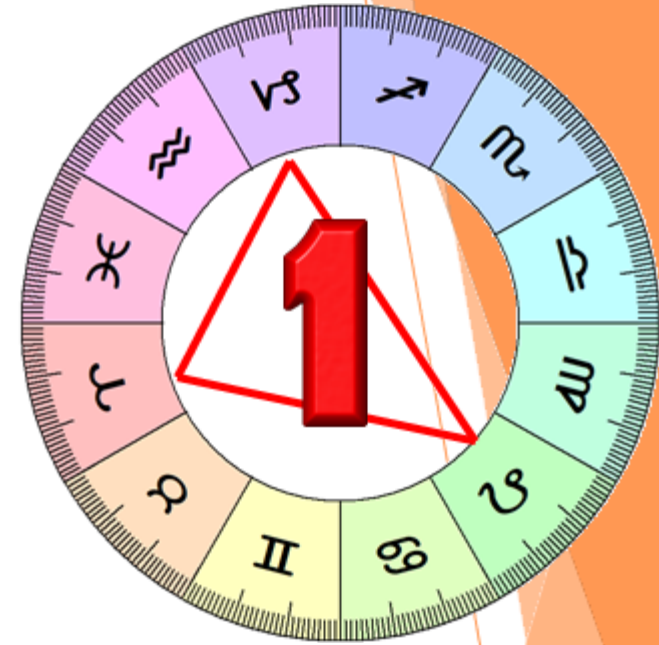
Those who really seek the path to enlightenment dictate terms to their mind. Then they proceed with strong determination.

Buddha





It's a struggle between the Ray 5 Soul's need to know . . . counteracted by the Ray 1 Personality's selfish desire for personal power.



Search for exact knowledge vs love of personal power

Dedication to science and pure research vs dedication to assertive self-advancement

Modesty in the face of endlessness of knowledge vs arrogance based on excessive self-emphasis

Meticulous attention to knowledge in detail vs careless dismissal of detailed approach

Insistence on scientific verification vs assertion of personal opinion as truth w/o verification

Ray 5 Soul/Ray 1 Personality Integration

- It's the task of the soul to convey to the personality a love of knowledge for its own sake, and not for the power and advancement it can bring.
 - ❖ soul is truly fascinated with the world and takes great delight in understanding how things *are*, and how things *work*, whether or not the personality benefits materially from such knowledge.
 - ❖ The soul is faced with a personality which is often engulfed in egotism—feeling that all people and all things are to be used for its own aggrandizement.
 - ❖ The soul is naturally frustrated because the personality refuses to see things as they are, to observe with disinterestedness, to keep *self* from distorting the understanding of what is seen.
- It will be the soul's difficult responsibility to guide personality towards detachment, creating a new perspective in consciousness leading to illumined knowledge of the garment of God.
- Gradually the personality realizes an unsettling perception of its own ignorance.
 - ❖ It is realized that power without knowledge is useless.
 - ❖ The vision of an endlessly fascinating world awaiting discovery enters the consciousness, along with the realization of the counter-productivity of impetuous, benighted blundering.
 - ❖ A new and important learning begins to grow—that knowledge is good in its own right, and that knowledge is power.

Integration Formulae for Rays 5 and 1:

Inclusive Detachment

Detachment is the Ray 5 formula;
Inclusion is the Ray 1 formula.
The composite effect for soul
and personality integration is the
magnetic, inclusive and
accepting attitude within the
personal consciousness which
facilitates, within the inner
psyche, a detachment from
matter, and an attachment to the
subjective reality which unifies
all things

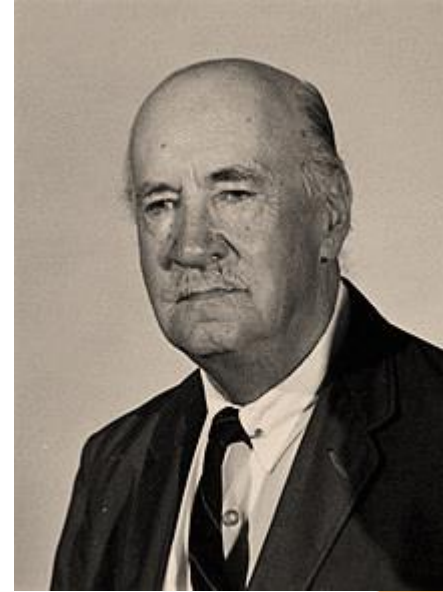
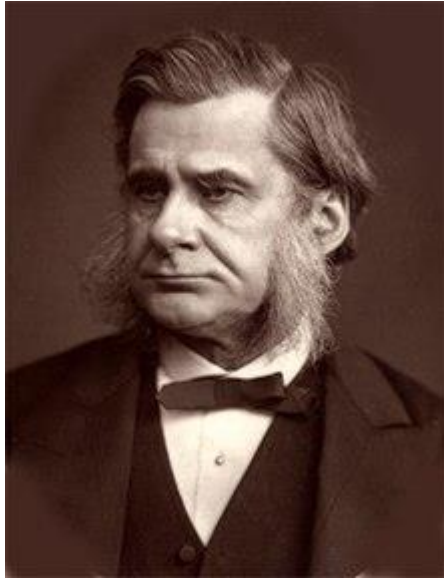
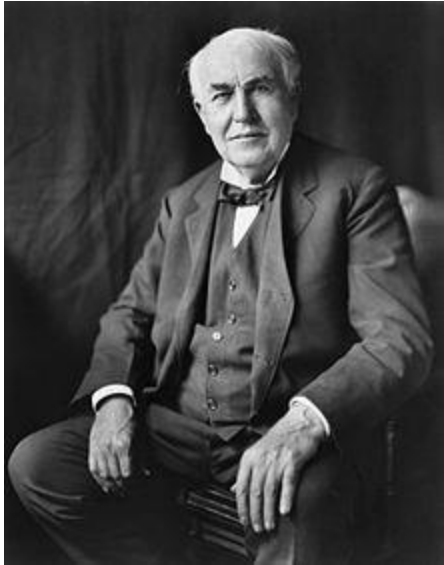


The Mystery of Life
by Olga Fröbe-Kapteyn

Ideal Expression of a R5 Soul and R1 Personality

- The pursuit and application of concrete knowledge are expressed with power and endurance— relentless research supported by personal strength.
 - ❖ Fortitude and one-pointed, willful, persistence serve selfless scientific inquiry and the urge to discover.
 - ❖ The urge towards specific, focused research masters the sense of focused self-importance.
 - ❖ A keen particularity supersedes the desire to see only the big picture.
 - ❖ Love of knowledge and its concrete applications become more important than the emphasis upon one's identity.
 - ❖ Knowledge becomes greater than power.

R5 Soul, Ray 1 Personality Examples





It's a struggle between the Ray 5 Soul's need to discover/apply true knowledge at all costs . . . counteracted by the Ray 2 Personality's desire to do nothing and know nothing that would disrupt cherished relationships or comfortable circumstances.



- Scientific pursuit of pure truth vs preoccupation with demands of personal love/affection
- Relentless, painstaking investigation vs aversion to effort that disrupts ease/comfort
- Scientifically applied spiritual detachment/clear perception vs personal attachment blurring the perception of reality
- Independent self-verification of accuracy vs too likely to be swayed by opinions of friends
- Willing to make sacrifices in pursuit of knowledge vs too much love of fun and enjoyment

Ray 5 Soul/Ray 2 Personality Integration

- It's the task of the soul to infuse personality with the urge to know (even if truth hurts).
 - ❖ The soul is forever asking questions, searching/investigating, seeking the true nature of matter.
 - ❖ Faced with a personality which is often disinclined to use the mind in a strictly rational manner, the soul must find a way to awaken it to a genuine and purely mental interest in things.
 - ✓ Beyond the interest in things and people to which it is closely attached.
- The soul is frustrated that the personality will not truly observe, but tends to overestimate whatever it loves, and, especially, the people it loves.
 - ❖ The soul seeks to have the personality stand back and look on with unbiased disinterest, no matter what the heart and feelings may say to the contrary.
 - ❖ Only in this way will the truth be revealed and well-meaning distortions of the truth relinquished.
- The personality learns, at length, that it cannot tolerate a state of comfortable darkness, no matter how unflattering and disconcerting the truth may be.
 - ❖ The glare of the harsh light of knowledge is better than the blindness of a comfortable mole.

Integration Formulae for Rays 5 and 2: *Centralized Detachment*

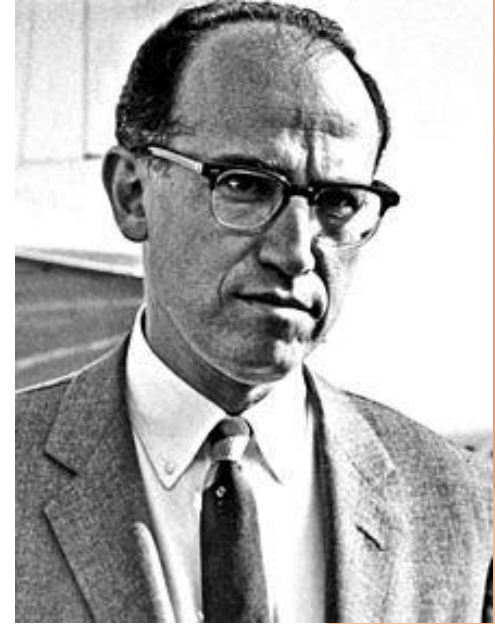
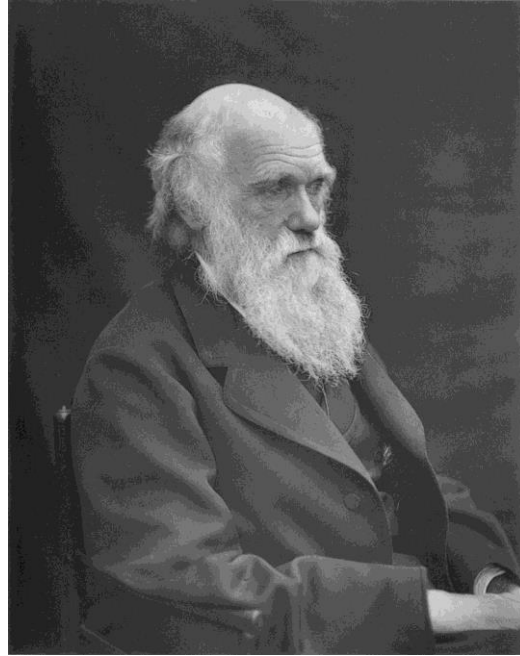
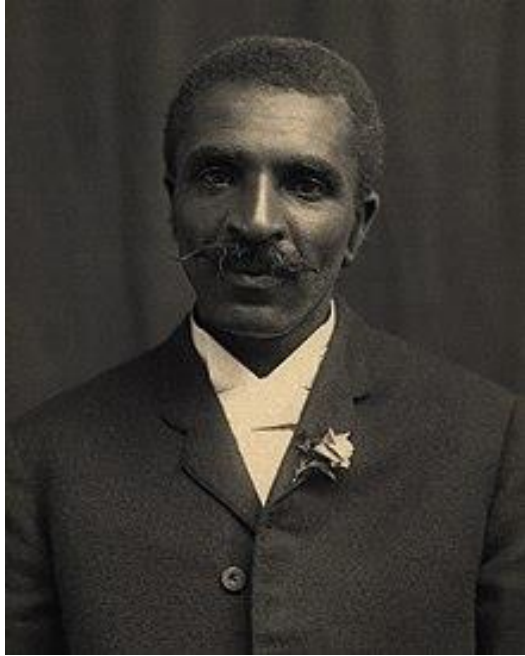
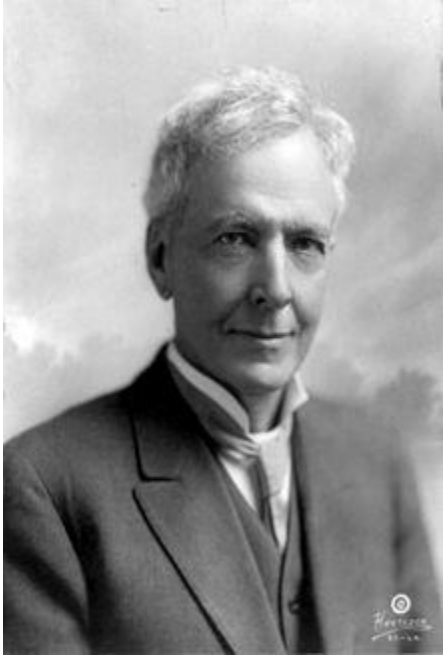


Detachment is the Ray 5 formula; *Centralization* is the Ray 2 formula. The composite effect for soul and personality integration is the attainment of a centered personality (loving, yet detached) which complements the will of the inner man to detach from what might be called the mystification of matter.

Ideal Expression of a R5 Soul and R2 Personality

- The pursuit/application of concrete knowledge are expressed resolutely and lovingly, with great attention to the human impact of that which is discovered.
 - ❖ The practice of pure research masters the love of personal comfort and ease.
 - ❖ One who must know the truth no matter how he feels about it, personally.
 - ❖ Broad humanitarianism furthers the applications of specialized knowledge for the advancement of the race.
 - ❖ A high-powered scientific mind dwells in a gracious person.
 - ❖ An expert who knows all the particulars of his field has the tact and loving patience to do an admirable job of teaching what he knows.

Ray 5 Soul, Ray 2 Personality Examples





It's a struggle between the Ray 5 Soul's need to know and verify the truth . . . counteracted by the Ray 3 Personality's desire to manipulate knowledge, people, and circumstances for selfish benefit (almost always at the expense of the truth).

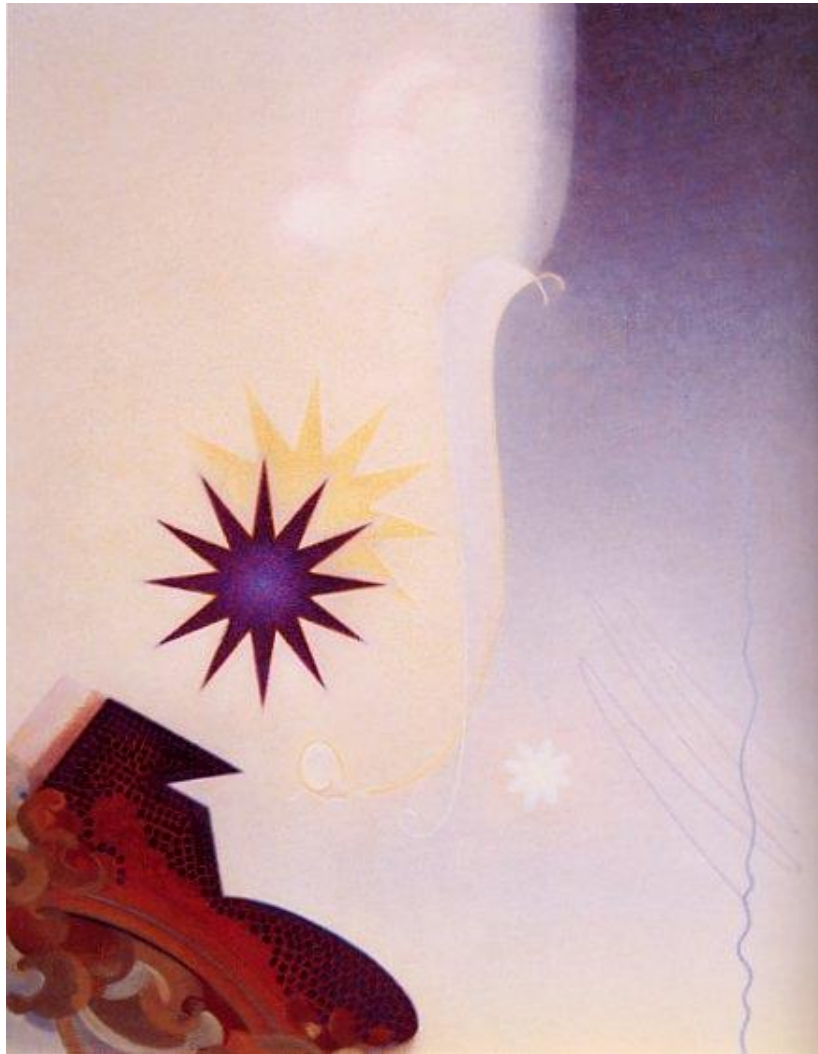


Spiritual science vs personal business
Conscientious experimentation and verification vs loose speculation and theorization
Spiritual pragmatism and common sense vs impractical big ideas
Directed, purposeful activity in pursuit of truth vs purposeless over-activity
Serious, economical, purposeful use of words vs over-verbalization

Ray 5 Soul/Ray 3 Personality Integration

- It's the task of the soul to focus the scattered, ill-directed forces of the personality.
 - ❖ The soul seeks precise knowledge and its concrete application, whereas the personality prefers to dabble with many thoughts and many activities, often leading to confusion and ineffectuality.
 - ❖ Soul pursues a highly focused line of enquiry which yields definite revelation.
 - ❖ The soul seeks to prevent the personality from diffusing energy, for the personality frequently refuses to settle down to the task at hand.
- Faced with a personality easily deflected from singleness of purpose, easily taking flight into inaccurate generalization, soul seeks to induce focused concentration on the issues.
 - ❖ Soul must guide personality from the many to the one; from the indefinite to the definite; from divergency to convergency; from talk to concrete action. The far-away look of the personality is transformed into the sharp, observant gaze, alert to every detail.
- Gradually, there dawns the realization that hyperactivity (whether mental or physical) leads away from knowledge and truth, and that things as they actually are, are far more interesting than things as one would have them be.

Integration Formulae for Rays 5 and 3: *Still Detachment*



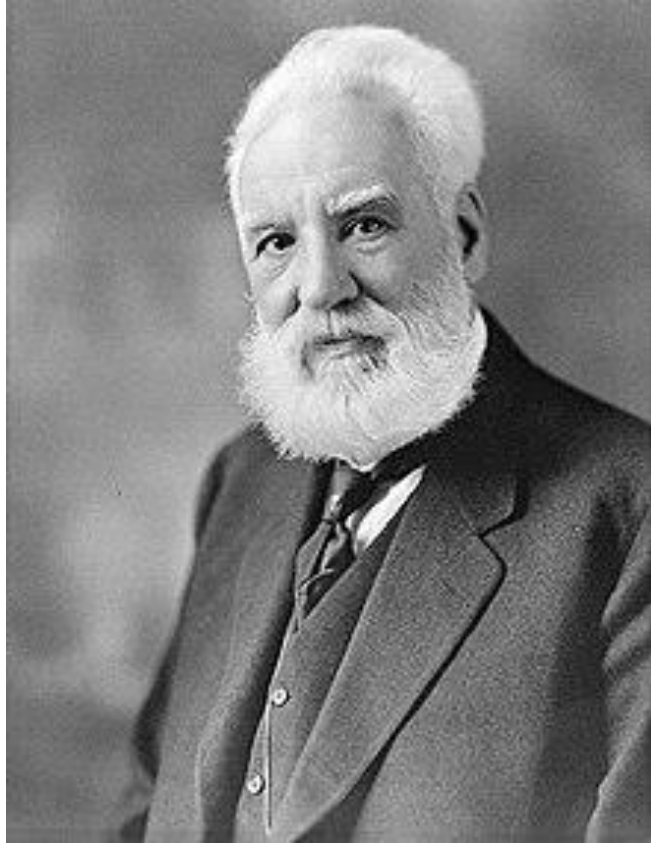
Challenge, Agnes Pelton

Detachment is the Ray 5 formula; *Stillness* is the Ray 3 formula. The composite effect for soul and personality integration is a still and quiet disposition of the “outer man” which complements the intention of the inner man to achieve detachment from a mental preoccupation with matter and form.

Ideal Expression of a R5 Soul and R3 Personality

- The pursuit and application of concrete knowledge is expressed with an innovative understanding of its diverse possibilities.
 - ❖ One-hundred-and-one uses are found for the products of pure research.
 - ❖ The researcher with great resourcefulness.
 - ❖ Research is valued more than commercial or business pursuits.
 - ❖ Discovery becomes more important than utility.
 - ❖ Accuracy becomes more important than expediency.
 - ❖ Knowledge is valued more than money and business success, or a business sense serves the implementation of scientific discoveries.
 - ❖ The love of verified fact masters the tendency to theorize/speculate but not confirm.

Ray 5 Soul, Ray 3 Personality Examples





It's a struggle between the Ray 5 Soul's need acquire exact knowledge at all costs . . . counteracted by the Ray 4 Personality's desire to reduce tension and preserve harmony, even if it means compromising the search for knowledge.



- Scientific pursuit of pure knowledge vs pursuit of personal expressivity
- Innate common sense vs abandonment of common sense in favor of fantasy/play/foolishness
- Ultra-realism and factuality/nonfictionalism vs over-emphasis on fictional thought/imagination
- Keen ability to analyze the quantitative basis of reality vs repudiation of analysis/quantification as dull and boring
- Constant recourse to cause-and-effect thinking vs pronounced distaste for linear, sequential thinking

Ray 5 Soul/Ray 4 Personality Integration

- It's the task of the soul to bring keen observation and detached, mental stability to an emotionally impressionable, fluctuating personality.
 - ❖ The soul values factual knowledge above things, whereas the personality is invested in its own expressivity, often to the detriment of mental concentration.
 - ❖ The soul seeks to evoke a passion for exactitude from a personality which has little use for particulars.
 - ❖ The soul must guide the personality to seek a steadfast, centralized position, where it is unlikely to be pulled off balance.
- It is the soul's intent to persevere in its focused enquiry until the light of knowledge dawns.
 - ❖ The soul must stabilize the personality before it can possibly persist throughout the lengthy time-spans required to complete all significant research efforts.
- Gradually new learnings are accepted and integrated within the personality consciousness;
 - ❖ Especially the learning that knowledge of reality is beautiful, and that factual understanding contributes to the significance of the expressivity/creativity which the personality values.

Integration Formulae for Rays 5 and 4: *Steadfast Detachment*

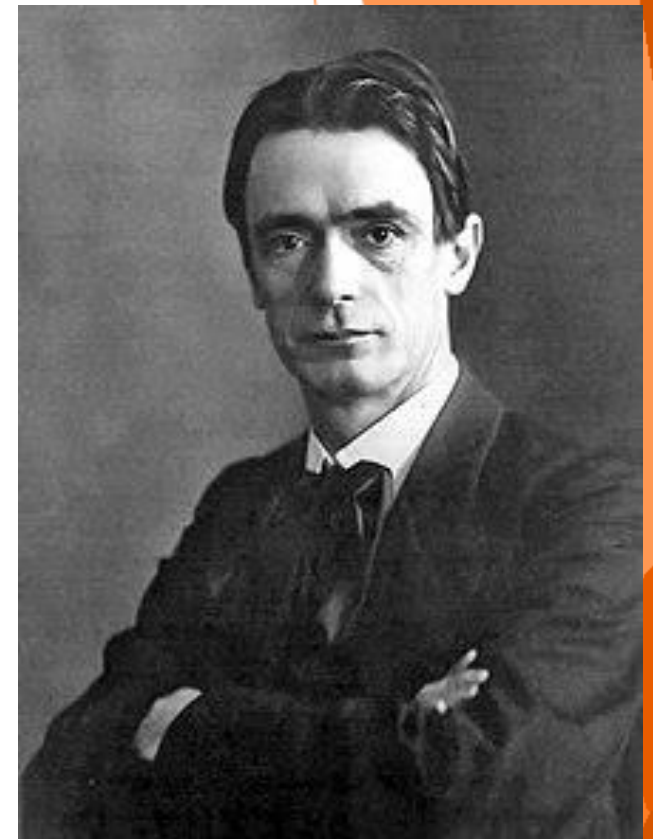


Detachment is the Ray 5 formula; *Steadfastness* is the Ray 4 formula. The composite effect for soul/personality integration is the development of a steadfast personality attitude complementing/fortifying determination of the inner man to detach from his obsession with the material aspect of reality.

Ideal Expression of a R5 Soul and R4 Personality

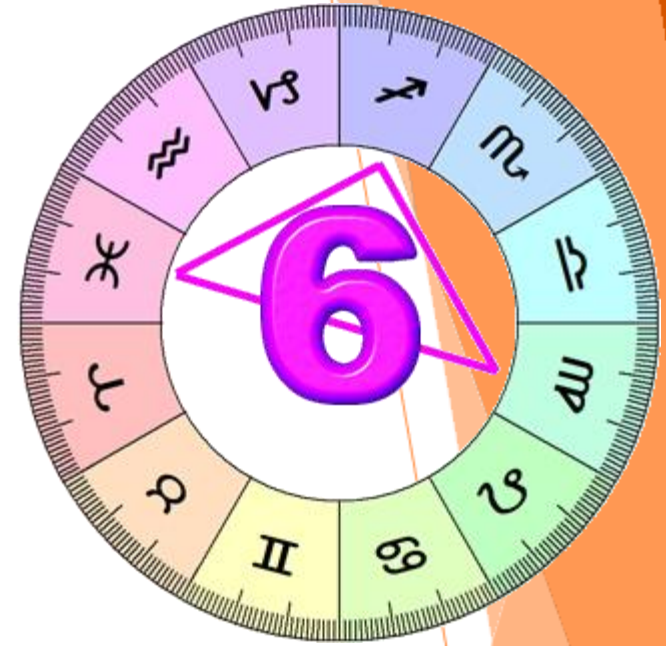
- The pursuit and application of concrete knowledge is expressed in a colorful, entertaining manner.
 - ❖ The artist begins to investigate his medium; learning all about the technical means becomes more important than what is to be expressed.
 - ❖ Science masters art.
 - ❖ The strictly rational, observant attitude stabilizes a tendency towards emotional turmoil and mood swings.
 - ❖ The ability to establish rapport with diverse people furthers the interests of scientific research.
 - ❖ Scientific findings are beautifully, colorfully, appealingly expressed.
 - ❖ One who can present the beauty of scientific fact.
 - ❖ One who can dramatize the story of science—the romance of the quest for knowledge.

Ray 5 Soul, Ray 4 Personality Examples





It's a struggle between the Ray 5 Soul's need for exact knowledge . . . counteracted by the Ray 6 Personality's desire for intense devotional attachment to some person/cause/ideal, despite the fact it may inhibit/distort progress toward knowledge.



Spiritual science vs inflexible personal belief
Earnest pursuit of accurate knowledge vs passionate adherence to cherished convictions
Unwavering mental discipline vs heated passions that overcome rational thought
Healthy, soul-inspired skepticism vs foolish credulity
Independence of thought/action vs debilitating personal dependency

Ray 5 Soul/Ray 6 Personality Integration

- It's the task of the soul to inspire the personality with an appreciation for rationality.
 - ❖ The soul faces a personality given to emotionality/irrationality. The soul's demand of the personality is more light, less heat (for personality is generically motivated by the heat of desire).
 - ❖ The mental and emotional fields are two of the great pairs of opposites, and with this particular ray combination, these opposites are very much at odds. The soul seeks to impose the regime of the mind upon a personality whose emotional/aspirational intensity is often difficult to restrain.
- The soul is frustrated by a personality which rejects mental values and prefers to submerge itself in sentiency and sentimentality.
 - ❖ The soul seeks to have the personality learn the value of proof.
 - ❖ The soul must lead the personality to the point where it can envision the pursuit and application of knowledge as an ideal end worthy of its devotion.
- The personality must begin to open its eyes; it eventually learns that it is gratifyingly possible to become just as intensely devoted to the pursuit of the ideal of scientific knowledge, as it was to lesser objects of devotion.

Integration Formulae for Rays 5 and 6: *Restrained Detachment*



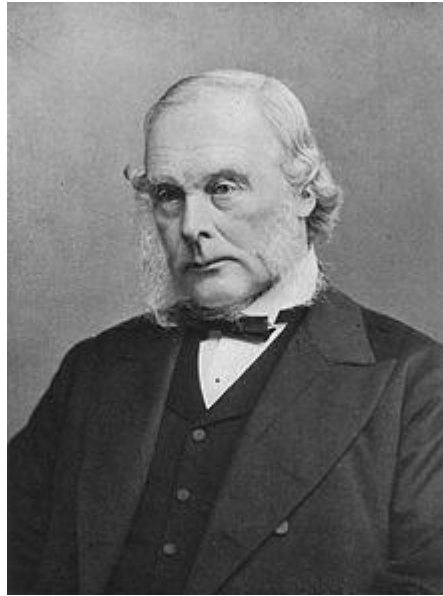
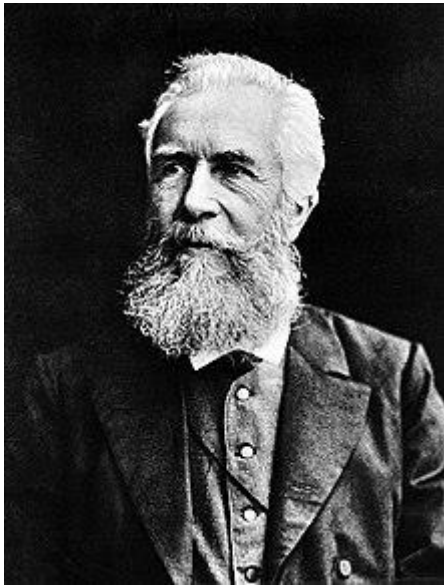
From Beyond, Nicholas Roerich.

Detachment is the Ray 5 formula; *Restraint* is the Ray 6 formula. The composite effect for soul and personality integration is the restraint of the outer man/personality which complements the inner man's intent to detach his consciousness from a preoccupation and false identification with the many forms of matter.

Ideal Expression of a R5 Soul and R6 Personality

- The pursuit and application of concrete knowledge is expressed ardently, one-pointedly, and with complete devotion.
 - ❖ This individual believes in science pursued to the exclusion of all else.
 - ❖ A narrow area of technical inquiry is pursued passionately.
 - ❖ The need to know masters the need to believe; knowledge masters faith; realism masters idealism.
 - ❖ This is an individual who would sacrifice all to achieve the discovery upon which he or she is intent.
 - ❖ An individual who has great faith in scientific discoveries and who will promote and defend their value tirelessly and without thought of himself.
 - ❖ Science has become his god.

Ray 5 Soul, Ray 6 Personality Examples





It's a struggle between the Ray 5 Soul's need to inquire until exact knowledge is achieved . . . counteracted by the Ray 7 Personality's desire to conform to some pattern (new or old), even if it inhibits the progress of meaningful enquiry.



- Independent research into the nature of reality vs dependency on patterns of social conditioning
- Dedication to pure knowledge vs dedication to maintaining appearances
- Innate truthfulness vs the polite disguising of the truth
- Intellectual detachment from biological rhythms/compulsions vs susceptibility to biological compulsions
- Research and development of true science of spirituality vs easily deceived by superstitious magical practices

Ray 5 Soul/Ray 7 Personality Integration

- It's the task of the soul to lead the personality towards a love of knowledge and away from an excessive love of form.
 - ❖ The soul seeks to see things exactly as they are—to know the truth no matter how disillusioning.
 - ❖ The soul, however, is faced with a personality who seeks comfort in rhythms, and allays its anxieties through the creation of order and routine.
- Soul must lead personality to the point where it understands exactly what it is really doing.
 - ❖ Stability, security and the feeling of reassurance evoked by sameness and routine must not be allowed to interfere with the endless quest for knowledge.
- The personality will eventually find repetitive action (no matter how well-performed) distasteful, and the unquestioning conformity to long-programmed patterns (religious, national, ethnic, civic, bureaucratic, modish, etc.) will end.
 - ❖ The personality comes to learn that exact knowledge makes possible the creation of patterns which are truly magical, rational and, hence, spiritually effective.

Integration Formulae for Rays 5 and 7: *Oriented Detachment*

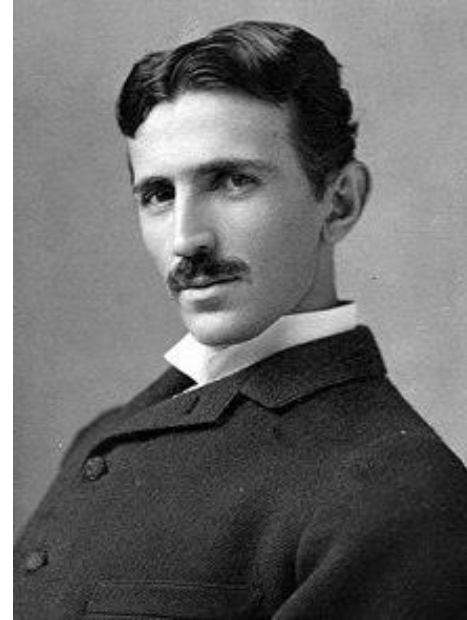
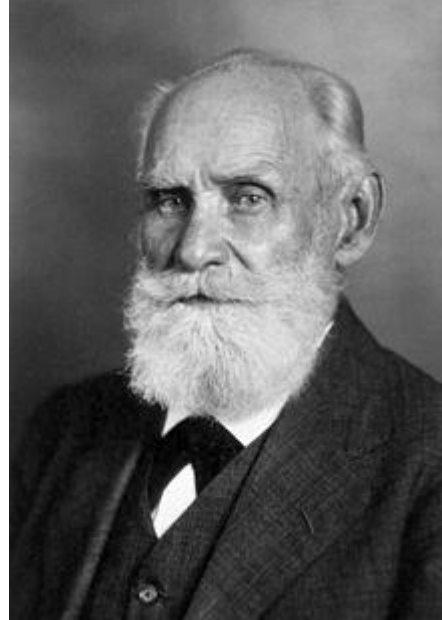
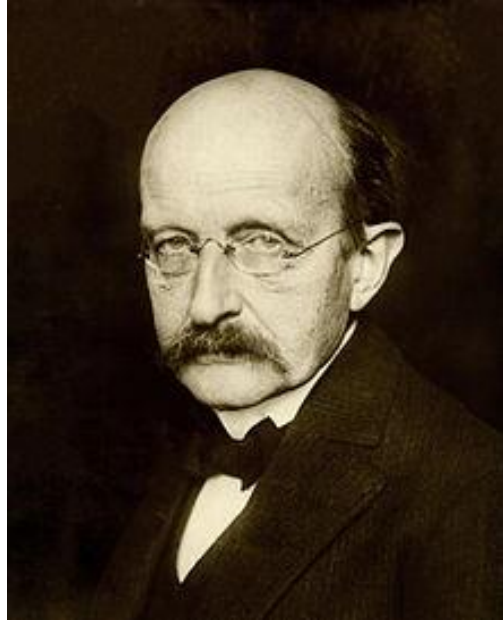


Detachment is the Ray 5 formula; *Orientation* is the Ray 7 formula. The composite effect for soul and personality integration is the outer man's orientation towards the inner Light which complements the inner man's will to detach from the light-concealing, illusory reality of the many forms of matter.

Ideal Expression of a R5 Soul and R7 Personality

- The pursuit and application of concrete knowledge is expressed systematically, methodically, and with great organizational skill.
 - ❖ Right procedure and exactitude of method and measurement serve scientific inquiry.
 - ❖ Innovative research masters reliance upon habitual methods.
 - ❖ Discovery and the revelation of what is, overcomes reliance upon custom and customary procedures.
 - ❖ The researcher who designs the programs of action needed for the most well-organized applications of his research results.
 - ❖ This combination gives the capacity for the perfect material implementation of scientific discovery— consummate engineering skill.
 - ❖ The facts and truth—no matter what—must master the attempt to keep up appearances.

Ray 5 Soul, Ray 7 Personality Examples



Notre Dame



The Sun King: Louis XIV

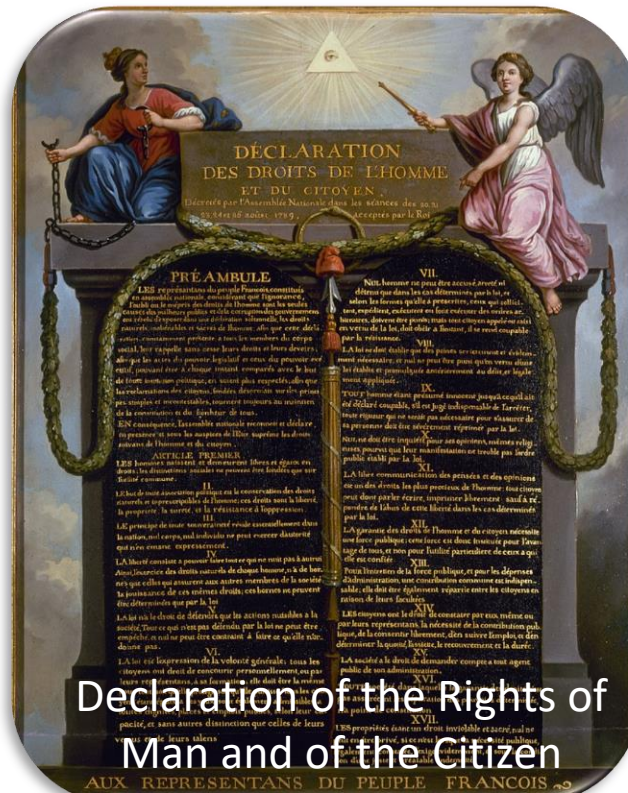


MARIE-ANTOINETTE AT VERSAILLES

CÉCILE BERLY



Storming the Bastille



Declaration of the Rights of Man and of the Citizen



Napoleon Bonaparte

Detachment

*is only sacred
to the degree it fosters
humility, respect and love.*

