

Ray 6 Soul/Personality Expressions

Ray 6 Soul, Ray 1 Personality

Ray 6 Soul, Ray 2 Personality

Ray 6 Soul, Ray 3 Personality

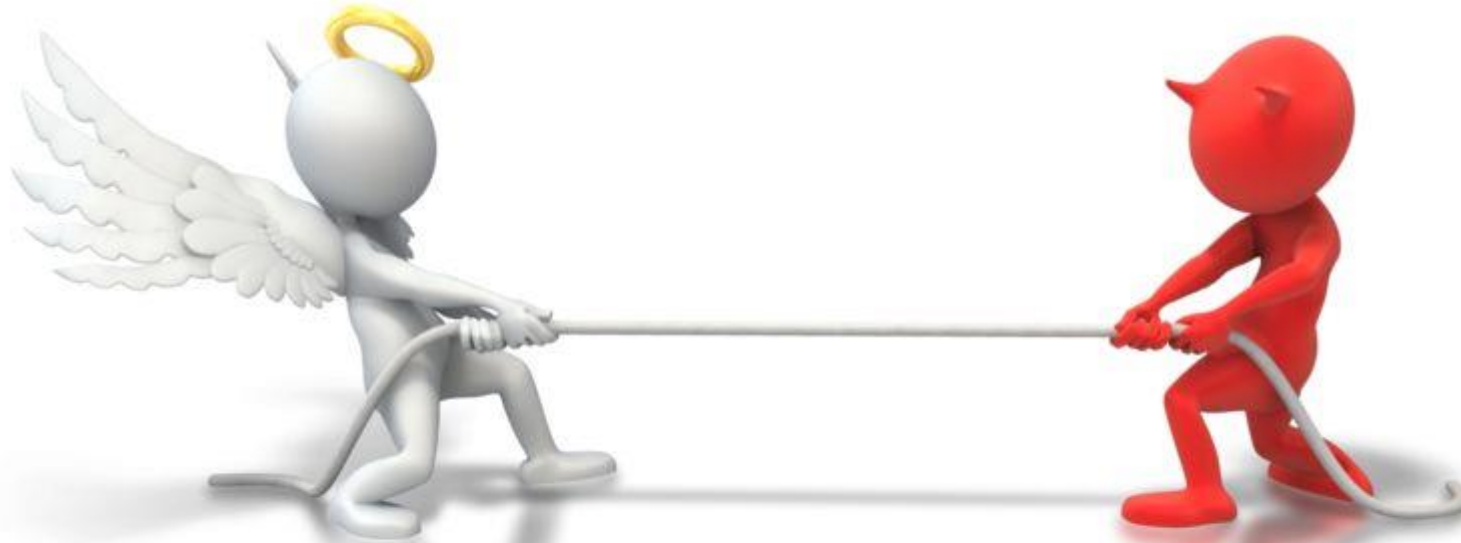
Ray 6 Soul, Ray 4 Personality

Ray 6 Soul, Ray 5 Personality

Ray 6 Soul, Ray 7 Personality

The Personality and Soul Ray must, at length, adjust to one another

In the life of the spiritually minded person, there is a long period when these two Rays are locked in conflict and do not function on a cooperative basis.



What we want to do is look at the ideal, where the Soul and Personality Ray cooperate in full harmony – the Personality Ray subordinating itself to the Soul Ray

Once the Soul Ray is in control, the Personality Ray becomes a sub-ray of the Soul Ray

Simply knowing your soul and personality ray is not enough – you must know how to *use* those energies in the best possible way.



Often, through the use of the creative imagination, ideal methods for expressing your ray qualities can be discovered.

Apply them to your life situations, observe how they are working.

Determine where you have succeeded in applying them, and where you have failed.

The Sons of God

- Hercules, the Buddha, and the Christ all had the sixth and the second rays as controlling factors – in Them, idealism, love-wisdom and an indomitable Ray 1 Will stood forth in all their divine power.
 - ❖ *Hercules, the Sun-God*, had a first ray soul, a second ray personality and a sixth ray astral body. These potencies and energies sufficed to carry Him through all the trials and the labors of the disciple
 - ❖ *The Buddha* had a second ray soul, a first ray personality and a sixth ray mind — a very rare phenomenon
 - ❖ *The Christ* had a second ray soul, a sixth ray personality (which accounted for His close relationship with the Master Jesus), plus a first ray mind
- They all embodied the essences of the spiritual life and all of Them were enabled to set Their seal upon history and upon the hearts of men, largely through the potency of Their sixth ray expression
- All of Them embodied also the new spiritual impulse which Their day and age required
 - ❖ All of Them for centuries — by the strength of Their living love and power — brought the vision and the aspiration of humanity back to those spiritual essentials whereby men must live
- All of Them were part of the directing group of Lives Who are working out the plans of God, founded upon the love of God.
 - ❖ The Buddha and the Christ are still closely connected with, and working in cooperation with the Hierarchy
 - ❖ Hercules has gone over into the Shamballa center, still working in association with the Buddha Who is one of the Forces linking Shamballa and the Hierarchy

Ray 6 – Devotion Idealism



Word of Power: The highest Light controls.

Ray 6 Type A – Devotion

Devotion and Passive Openness to Guidance Emphasized.

This type of the sixth Ray is quite passive, tranquil and receptive. It regards itself as a recipient, and open to the influence that flows from the object of its devotion.

There is a pronounced “waiting to be filled,” and the attitude is more quiet than aggressive.

There is much about this Type that suggests the second Ray of Love-Wisdom, except that the focus will be narrower and more specific.

It is, over all, a very gentle influence, and characterizes those who devotedly cherish someone or something.

Ray 6 Type B – Idealism

Fiery Aspiration and Militant Idealism Emphasized. Type B is fiery; Type A is watery.

The emphasis is on “going for” what one wants, rather than waiting for it to arrive.

There is still plenty of devotion, but there is also a fiery zeal that keeps the individual of this Type constantly, and one-pointedly, striving to attain his highest ideal or the object of his devotion.

Type B is altogether less quiet, and is far more violent and aggressive.



“A strong man must be militant as well as moderate. He must be a realist as well as an idealist.”

Martin Luther King Jr.

You Might be a Ray 6 Soul if . . .

You strongly feel spiritual idealism and ardor

You have profound mysticism and sensitivity to higher worlds

You feel exquisite sensitivity to transcendent ideals

You exhibit a consummate tenderness toward objects of devotion

You have the tendency to reject all but the highest values

You are inspired to follow a chosen leader

You are impelled to engage in battle for worthy causes or ideals

You exhibit unalterable loyalty and irrepressible faith

Your devotion to a cause transcends your personal interests

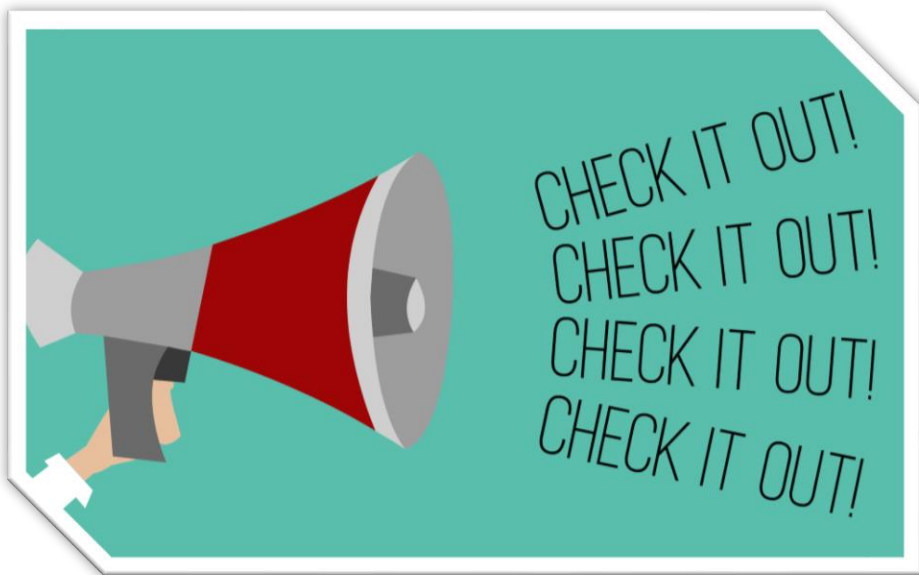
You have a one-pointed focus leading to spiritual accomplishment
(and the power to destroy anything preventing that realization)



Ray 6 Vocational Indications: Positions where one must “totally believe in” what one is doing.



Religious work, all forms of promotion, causes or activism, charity work, etc.

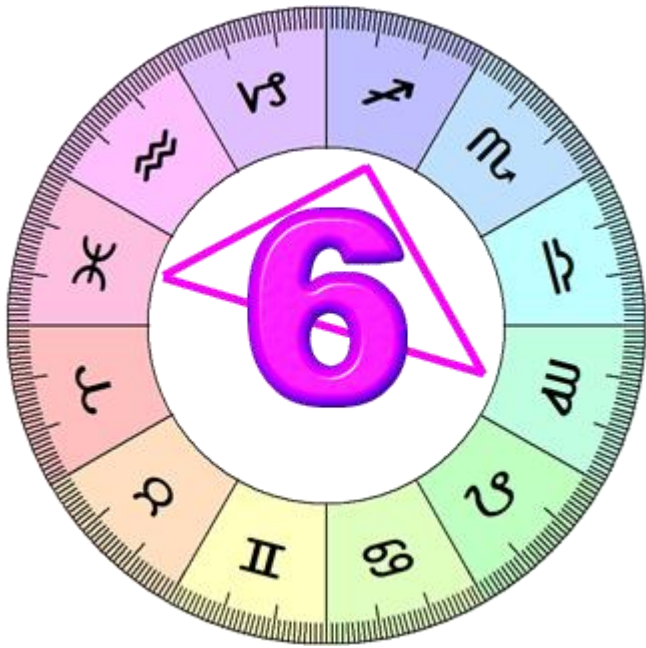


“In the practice of tolerance,
one's enemy is the best teacher.”

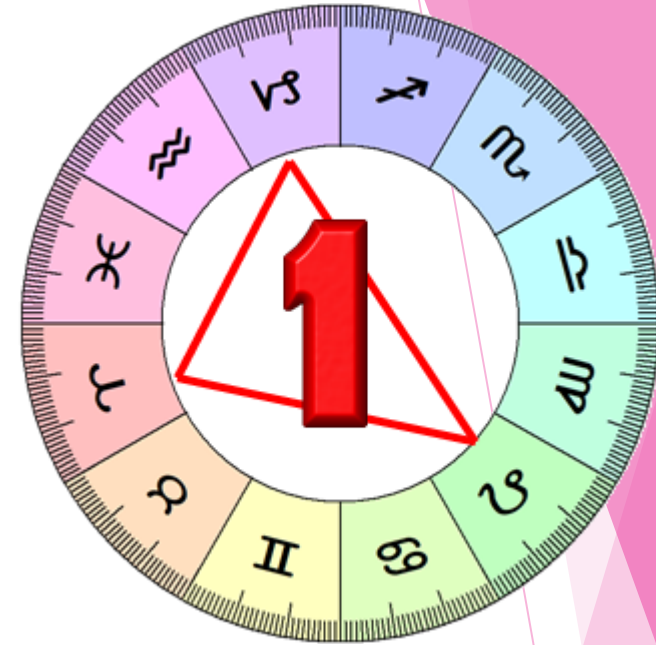
Dalai Lama

www.GodWallpaper.in





It's a struggle between the Ray 6 Soul's spiritual need to sacrifice oneself, totally, devotedly and without reservation, for one's highest ideals. . . counteracted by the Ray 1 Personality's inclination to view oneself as the world's most important person, who must survive and have his own way at any cost— including the sacrifice of his highest ideals.

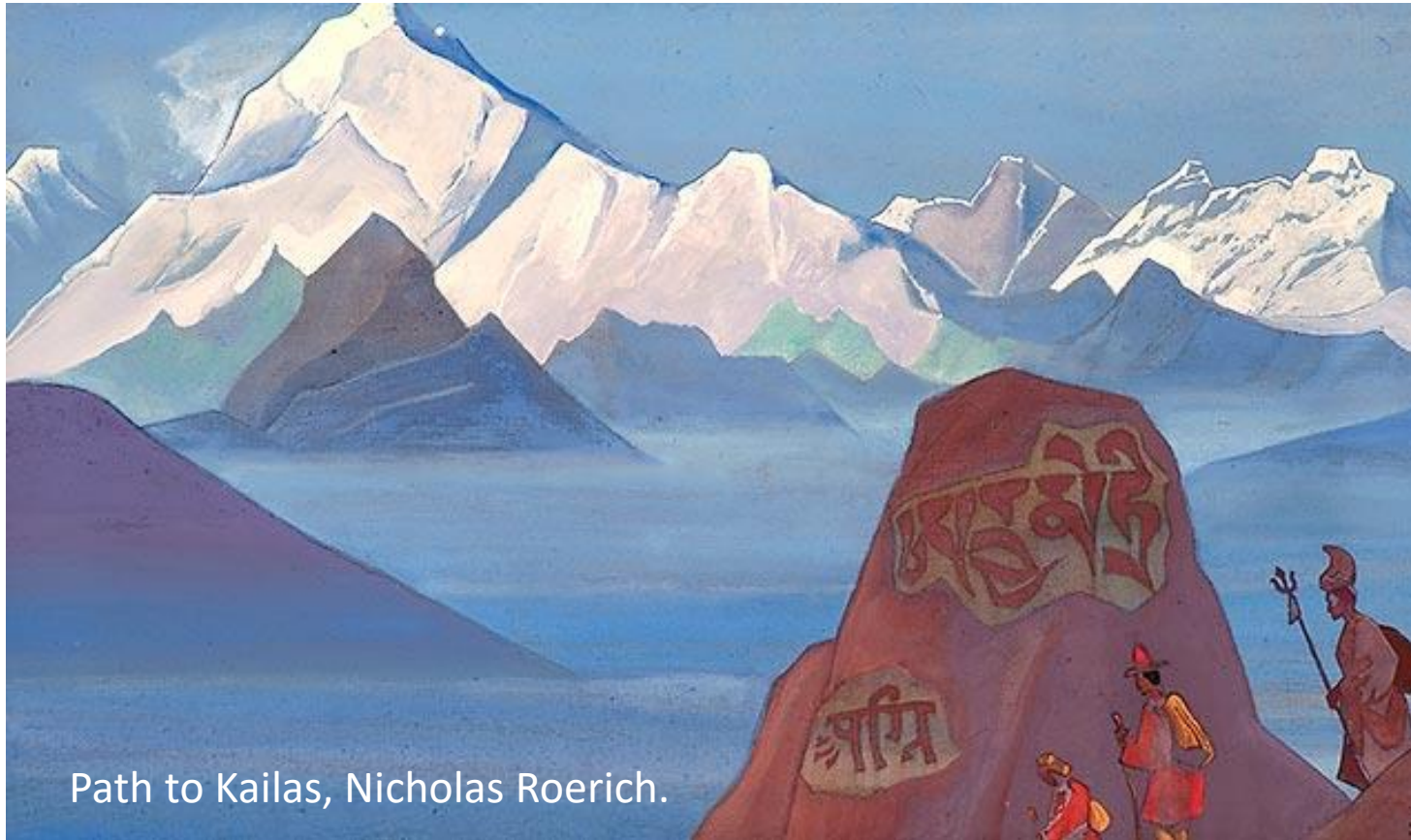


- Spiritual idealism versus the love of personal power
- Divine dualism; attitude that one is the only one in the world
- Passionate yearning for the divine; proud self-satisfaction
- Divinely inspired enthusiasm; repressive self-containment
- Unalterable loyalty; arrogant expectation of loyalty from others

Ray 6 Soul/Ray 1 Personality Integration

- It's the task of the R6 soul to induce humility and self-sacrifice in the consciousness of the R1 personality.
 - ❖ The soul has a truer sense of perspective, understanding the nature of greatness
 - ❖ It comprehends the vastness of the plan and tininess of the personality's role
 - ❖ The personality sees things egotistically, trying to preserve its sovereign prerogatives
- The soul tries to inspire the personality to see that each entity revolves around a still greater entity; to lift his gaze toward that higher center
 - ❖ The personality remains stubbornly self-centered
 - ❖ While the soul projects a vision of the Path of Spiritual Development as a distant goal
 - ❖ The soul seeks to teach the personality to relinquish its inflated opinion of self and to aspire to something greater
- At length, the personality learns the meaning of humility
 - ❖ The greatness so much craved can only be achieved when the gaze is turned upward
 - ❖ It must recognize its place in something much bigger than the isolated self, it must feel the yearning for that wholeness in order to find the transcendent Greatness

Integration Formulae for Rays 6 and 1: *Inclusive Restraint*



Path to Kailas, Nicholas Roerich.

Restraint is the Ray 6 formula; *Inclusiveness* is the Ray 1 formula. Composite effect for soul and personality integration is the loving and inclusive attitude of the outer man which complements the will of the inner man to restrain himself from all aimless quests, and instead quest only after the essence— that which is of supreme value, *Divine Love*

Ideal Expression of a R6 Soul and R1 Personality

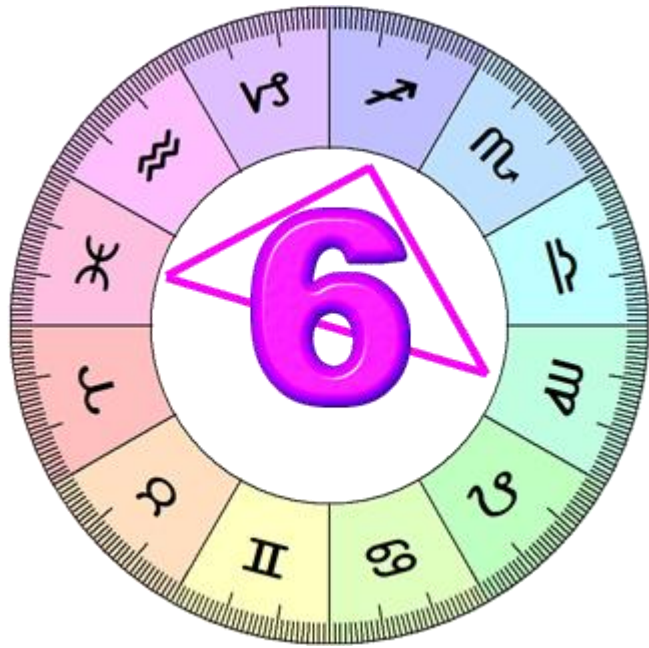
- Idealism/devotion are expressed with great strength and endurance, fearlessly.
 - ❖ Personal fortitude serves the achievement of passionately held convictions and ideals.
 - ❖ Self-surrender and self-sacrifice master the tendency to self-aggrandizement.
 - ❖ Self-abnegation masters personal pride.
 - ❖ The soul suffuses the often resistant personality with devoted love.
 - ❖ Utter devotion to a cause masters self-importance.
 - ❖ Devoted attachment is seen to be more important than aloofness and detachment.
 - ❖ The ideal is seen to be more important than the one who achieves it.
 - ❖ The ideal is the joyous and spontaneous sacrifice of the powerful, personal self to that which is greater than itself.

Ray 6 Soul, Ray 1 Personality Examples:

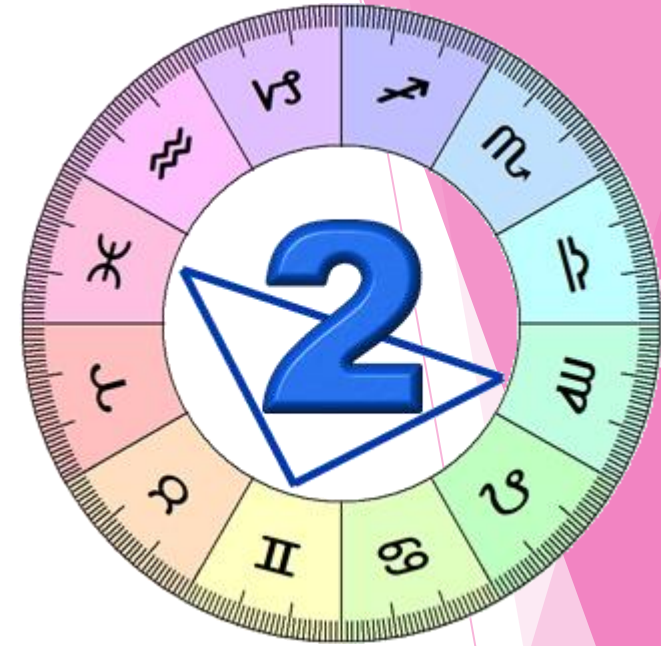
"I have a dream"

Martin Luther King Jr.
MARTIN LUTHER KING JR.





It's a struggle between the Ray 6 Soul's struggle between the spiritual need to be devoted to high ideals at any cost . . . and the Ray 2 Personality's desire for the warm comforts of love and learning, often achieved at the expense of high and demanding ideals.



Spiritual ardor versus personal ease and comfort

Intensity of love, broad, pleasant superficial affection

Ardent spiritual discipline; avoids all strenuous application of force

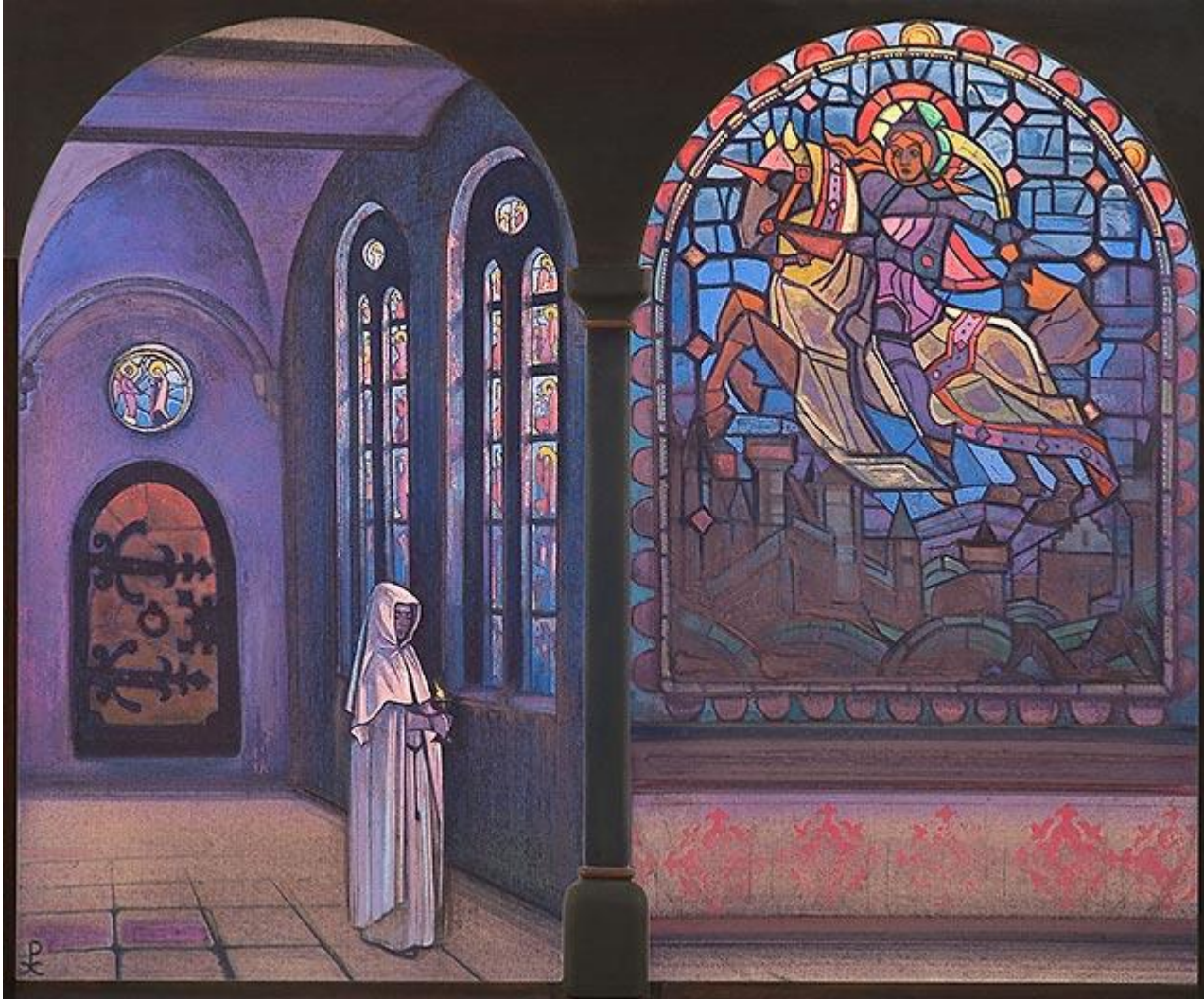
The power to detach violently; difficulty with all detachments

Instant mobilization for necessary action; overly absorbed in study and loathe to take action

Ray 6 Soul/Ray 2 Personality Integration

- It's the task of the R6 soul to arouse the R2 personality to more strenuous effort in the cause of attainment
 - ❖ The soul is motivated by spiritual extremism; the personality dislikes stress
 - ❖ The urging soul faces a personality who would rather take it easy, proceed gradually, and above all else, doesn't want to disrupt its warm and close attachments
 - ❖ The soul needs to persuade the personality that lethargy and overattachment are preventing it from realizing and attaining higher things
 - ❖ Slowly the soul infuses the personality with a glorious vision of a Path leading to heights that can only be attained if the personality bestirs itself and lets go of the near and dear
- At length, there is no choice but to forsake lesser things for the greater
 - ❖ The alternative is suffocation in one's own personal satisfactions
 - ❖ The influence of the soul prevails, one love – a love more ideal and more transcendent – now replaces the lesser loves
 - ❖ To that One Love the individual becomes devoted

Integration Formulae for Rays 6 and 2: *Centralized Restraint*



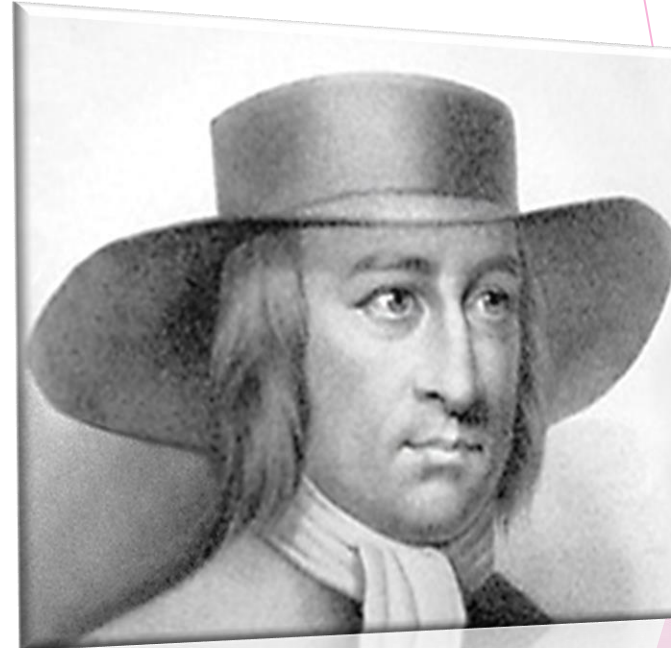
Glory to the Hero, Nicholas Roerich.

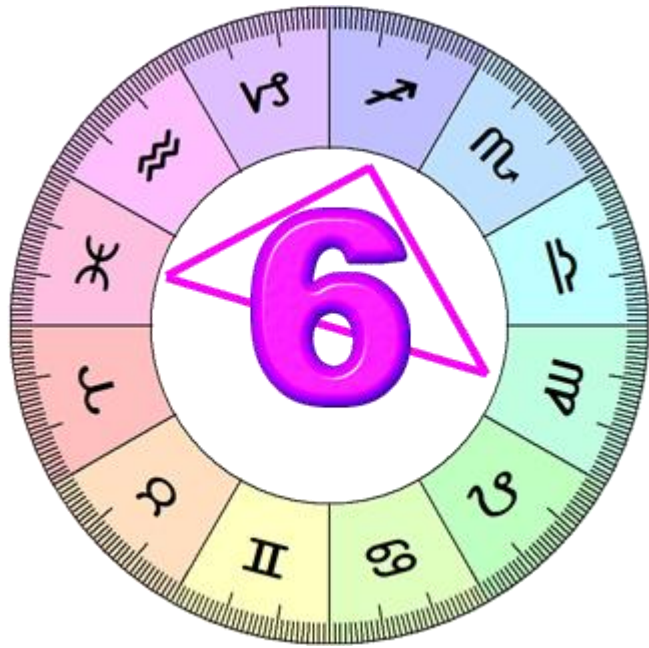
Restraint is the Ray 6 formula; *Centralization* is the Ray 2 formula. Composite effect for soul and personality integration is the quiet and peaceful centralization of the personal consciousness which complements the determination of the inner man to restrain himself from pursuing anything but that which is of the highest spiritual value

Ideal Expression of a R6 Soul and R2 Personality

- Idealism and devotion are expressed slowly, considerately, in a sweet manner
 - ❖ Intensity of belief and conviction master the desire not to push others, the desire to be loved, and the desire for personal comfort.
 - ❖ Personal kindness and serenity, the considerate go-slow approach serve the fulfillment of cherished ideals.
 - ❖ Passion for the right, masters a well-meaning, but ill-advised, indiscriminate tolerance.
 - ❖ A passion for the ideal comes first, but there is a real feeling for people and a wish to see them not suffer even though the fulfillment of the ideal may require suffering.

Ray 6 Soul, Ray 2 Personality Examples





It's a struggle between the Ray 6 Soul's spiritual need for a transcendent union with divinity achieved through faith and ardent aspiration . . . and the Ray 3 Personality's desire to manipulate the three worlds of human evolution through the power of intellectual reasoning, almost invariably at the expense of the mystical life.



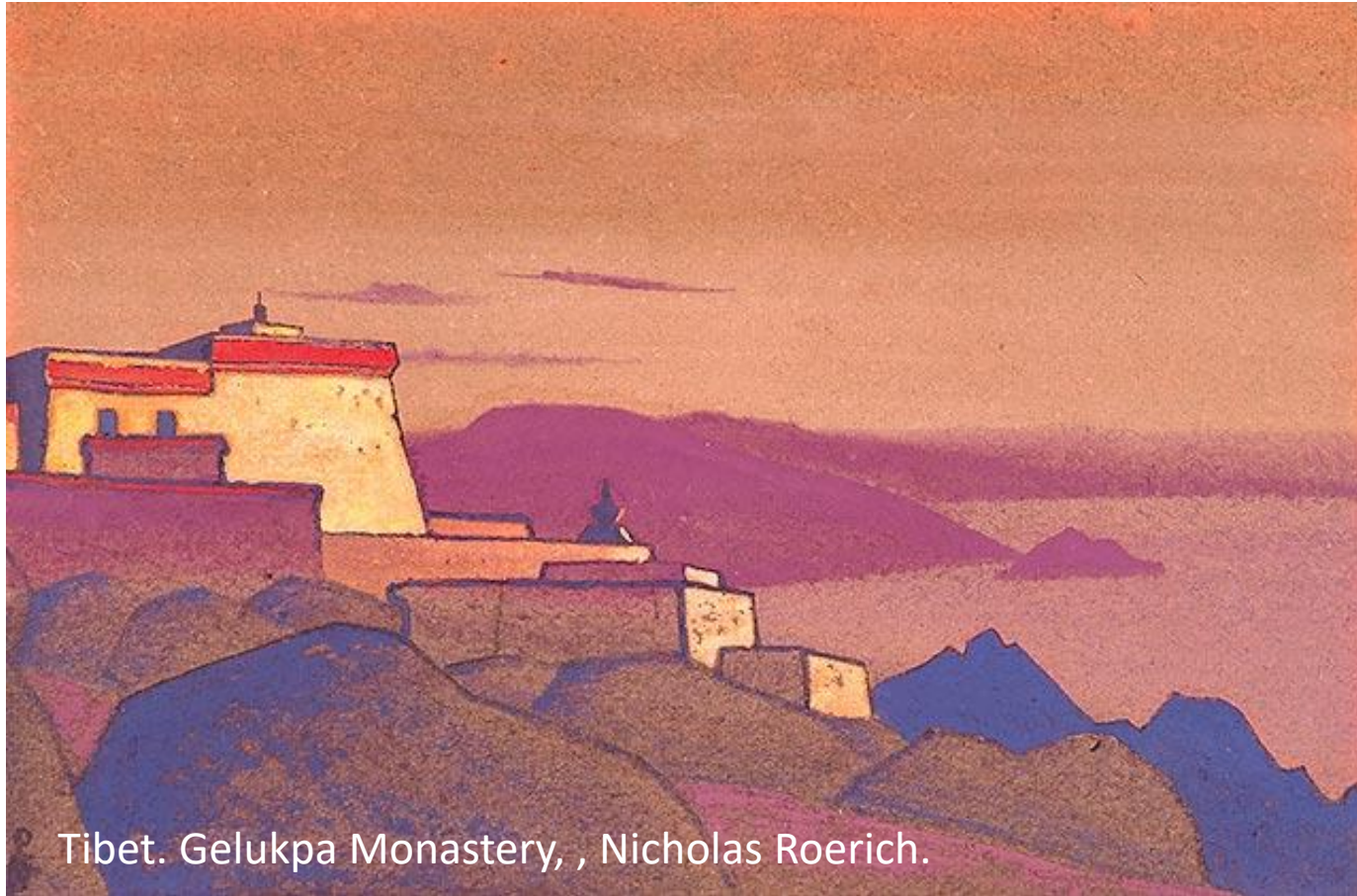
Spiritual earnestness versus calculated and premeditated insincerity
Faith that touches reality; intellectual reasoning within the veils of maya
Uncompromising idealism; non-dualistic expediency
High-minded honesty; devious manipulation for personal advantage

One-pointed focus leading to spiritual accomplishment; scattered thought/activities dissipating energy

Ray 6 Soul/Ray 3 Personality Integration

- It's the task of the R6 soul to show the R3 personality the limitations of reasoning
 - ❖ When consciousness is identified with the soul, it is possessed by an unquenchable aspiration for the ecstasy of mystical transcendence
 - ❖ With this combination of rays, the soul is faced with a personality who is preoccupied with mental processes – as long as it's absorbed in hyperactive thinking/doing, it will not be able to participate in mystical exaltation (only achieved through prayer/meditation)
- The soul seeks to impress the personality with the need to cease the incessant activities long enough to catch a glimpse of the transcendent vision
 - ❖ There are higher opportunities the personality can't make for itself
 - ❖ It needs to learn an attitude of stillness and upward gazing
- Gradually the lure of the transcendent heights begin to lift the personality out of its intellectual convolutions
 - ❖ It realizes its many activities are getting nowhere; it's missing far higher goals
 - ❖ Though difficult, the R3 personality learns to simplify its life and begins to walk the straight and narrow in pursuit of **one** objective, the transcendent vision as presented by the soul

Integration Formulae for Rays 6 and 3: *Still Restraint*



Tibet. Gelukpa Monastery, , Nicholas Roerich.

Restraint is the Ray 6 formula; *Inclusiveness* is Ray 3 formula. Composite effect for soul and personality integration is the stillness of the outer man which complements the determination of the inner man to restrain himself from pursuing anything but that which is of the highest spiritual value

Ideal Expression of a R6 Soul and R3 Personality

- Idealism/one-pointed devotion are expressed intelligently, resourcefully, cleverly.
 - ❖ The sense of righteousness and the purity of motive master expediency and moral insouciance or irresponsibility.
 - ❖ The ability to plan, and actively execute plans, serve the ideal to which one is devoted.
 - ❖ Sincerity and simplicity master deviousness and complexity.
 - ❖ The love of religion masters the love of business.
 - ❖ One who can find endless reasons to justify his faith, but faith comes first and reason second.
 - ❖ This individual may be the businessman who lays his proceeds upon the altar of his church.
 - ❖ An individual capable of finding a multitude of ingenious ways to promote his beliefs and convictions.

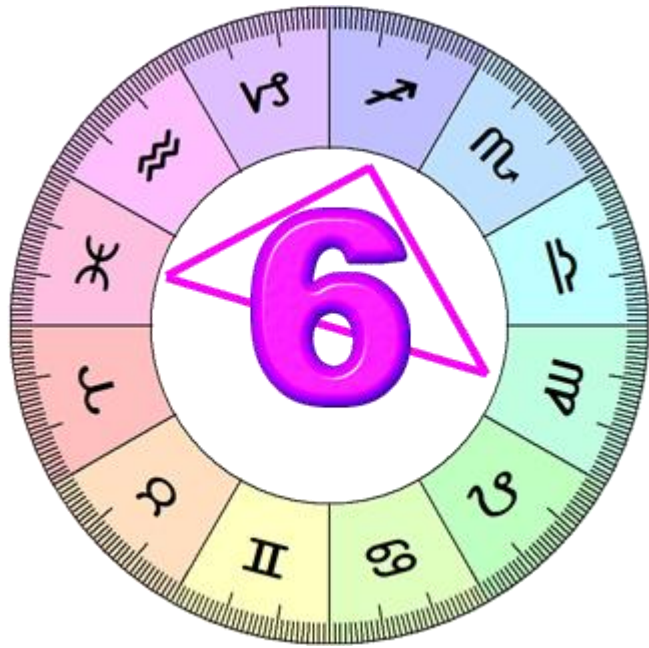
Ray 6 Soul, Ray 3 Personality Examples



"People often say that **motivation** doesn't last.
Well, neither does **bathing** - that's why
we recommend it **daily**."

Zig Ziglar





It's a struggle between the Ray 6 Soul's spiritual need to follow one's highest ideal with unswerving devotion . . . and the Ray 4 Personality's desire to achieve peace and harmony at all costs, even if one's ideals must be compromised.



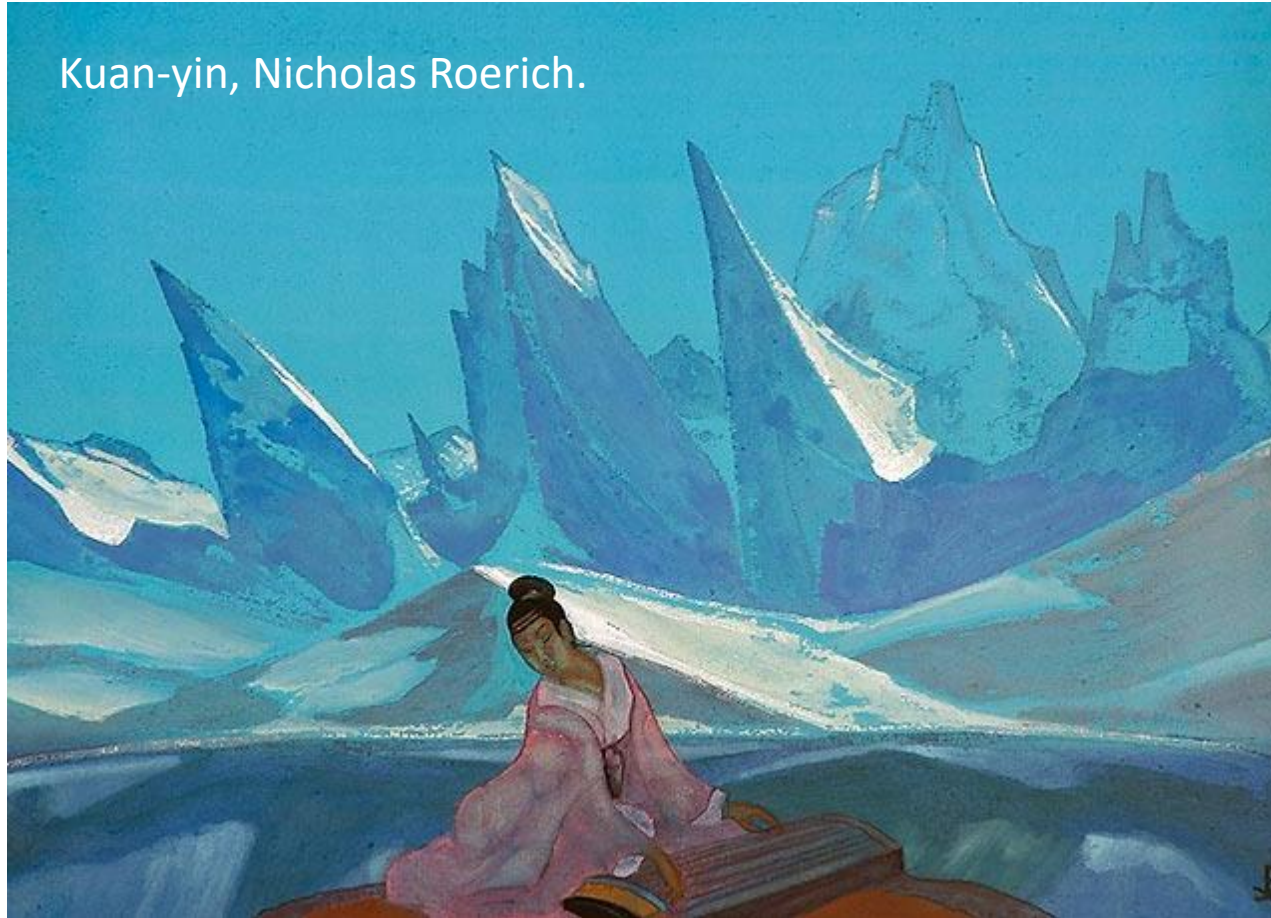
Rising above limitations of the form versus swinging helplessly between the pairs of opposites
Soul inspired loyalty to lofty causes; divided loyalties and inconstancy
Serenity of assured faith; constant personal turmoil and crises
Utter reliability; unreliability of a self-conflicted person
Single-minded fulfillment of duty; capriciousness and irresponsibility

Ray 6 Soul/Ray 4 Personality Integration

- It's the task of the Ray 6 soul to assist the Ray 4 personality to end its perpetual internal/external ambivalences and focus its aspiration on a single, magnetic point.
 - ❖ For soul, there is always one thing of greatest worth (person/cause/ideal/great being)
 - ❖ But the personality can rarely decide to pursue one thing single-mindedly
 - ❖ When it does decide, it shortly reverses itself with a contradictory decision
- Soul wants to hurry the process, but is faced with a personality who is embroiled in crises and conflict and can't move forward, finding it difficult to hold any commitment
 - ❖ The soul's greatest weapon is the capacity to inspire enthusiasm so the personality becomes enamored of new/lofty possibilities and stops wasting energy in useless conflict
 - ❖ The personality needs to harmonize its energies so it can move forward with keen aspiration
- Eventually the personality realizes the futility of living (no matter how vibrant, exiting, and colorful) when it has no sense of what is possible
 - ❖ The image of the ideal human, living in an ideal environment becomes stronger
 - ❖ It dawns on the personality that it's impossible to aspire to greater heights without recognizing with reverence those who are already ideal humans, willing to assist
 - ❖ The value of idealism and devotion becomes evident to the personality, who with ardor and aspiration, begins to transcend the futility of a preoccupation with a strictly human state

Integration Formulae for Rays 6 and 4: *Steadfast Restraint*

Kuan-yin, Nicholas Roerich.

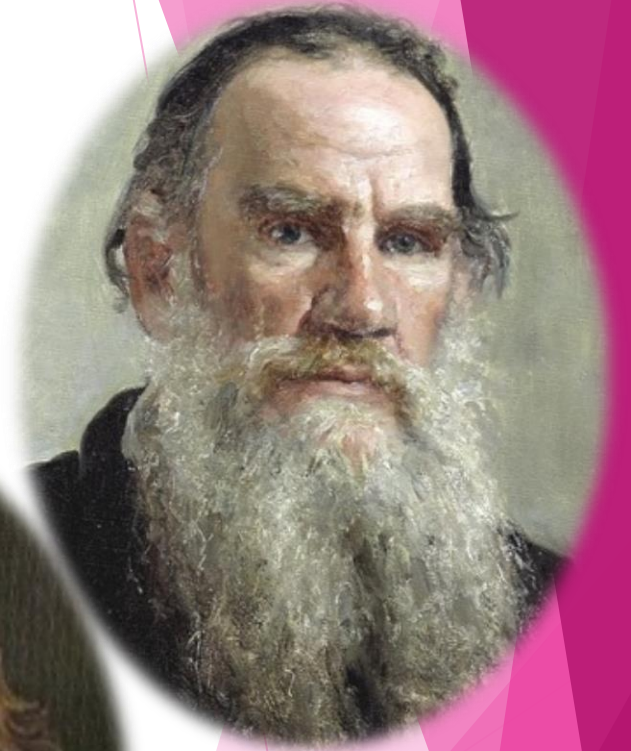


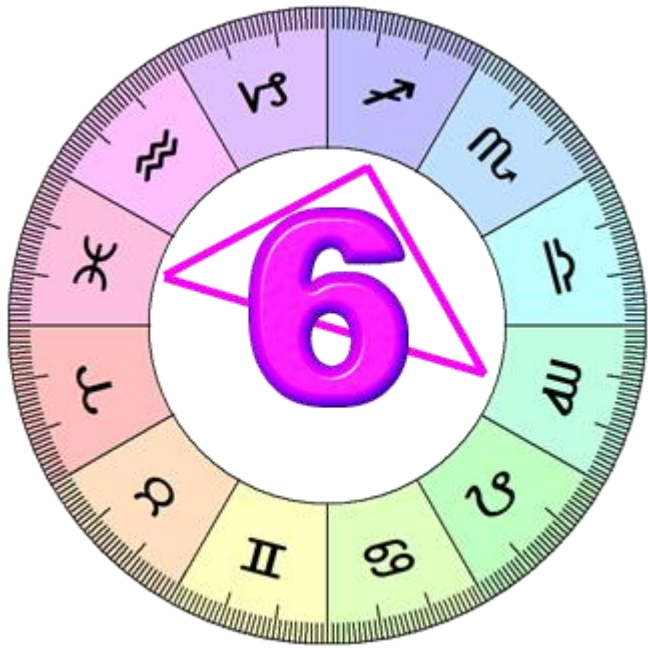
Restraint is the Ray 6 formula; *Inclusiveness* is Ray 1 formula. Composite effect for soul and personality integration is the steadfast attitude of the outer man which complements the determination of the inner man to restrain himself from pursuing anything but that which is of the highest spiritual value

Ideal Expression of a R6 Soul and R4 Personality

- Idealism and one-pointed devotion are expressed beautifully and harmoniously
 - ❖ Idealism and one-pointed devotion are expressed beautifully and harmoniously.
 - ❖ Unyielding devotion and commitment to an ideal master vacillation and pliability.
 - ❖ Sincerity and one-pointed loyalty master ambivalence and divided loyalties.
 - ❖ Faith and optimism prevail over personal ambivalences, moods and negativity.
 - ❖ Perceptive steadiness overcomes personal instabilities.
 - ❖ There is often a strong tendency for one to fight to defend his ideals.
 - ❖ Once personal combativeness is subdued and transformed into harmony, the ability to function harmoniously with others serves the realization of one's greatest dreams.
 - ❖ One's highest ideals and yearnings are expressed through creative living and artistic expression, but the ideas are primary, and art is the form of expression.

R6 Soul, Ray 4 Personality Examples





It's a struggle between the Ray 6 Soul's spiritual need to rise towards mystical union through prayer, aspiration and faith . . . and the Ray 5 Personality's desire to achieve knowledge exclusively by means of the sense-conditioned concrete mind—a skeptical and doubting attitude which challenges the very existence of those spiritual realities the soul-inspired consciousness pursues.



Earnest spiritual aspiration versus pursuit of worldly knowledge

Abiding faith in nonmaterial realities; contempt for irrational concept of nonmaterial realities

High-minded morality; amorality of the inquisitive, obsessively interested mind

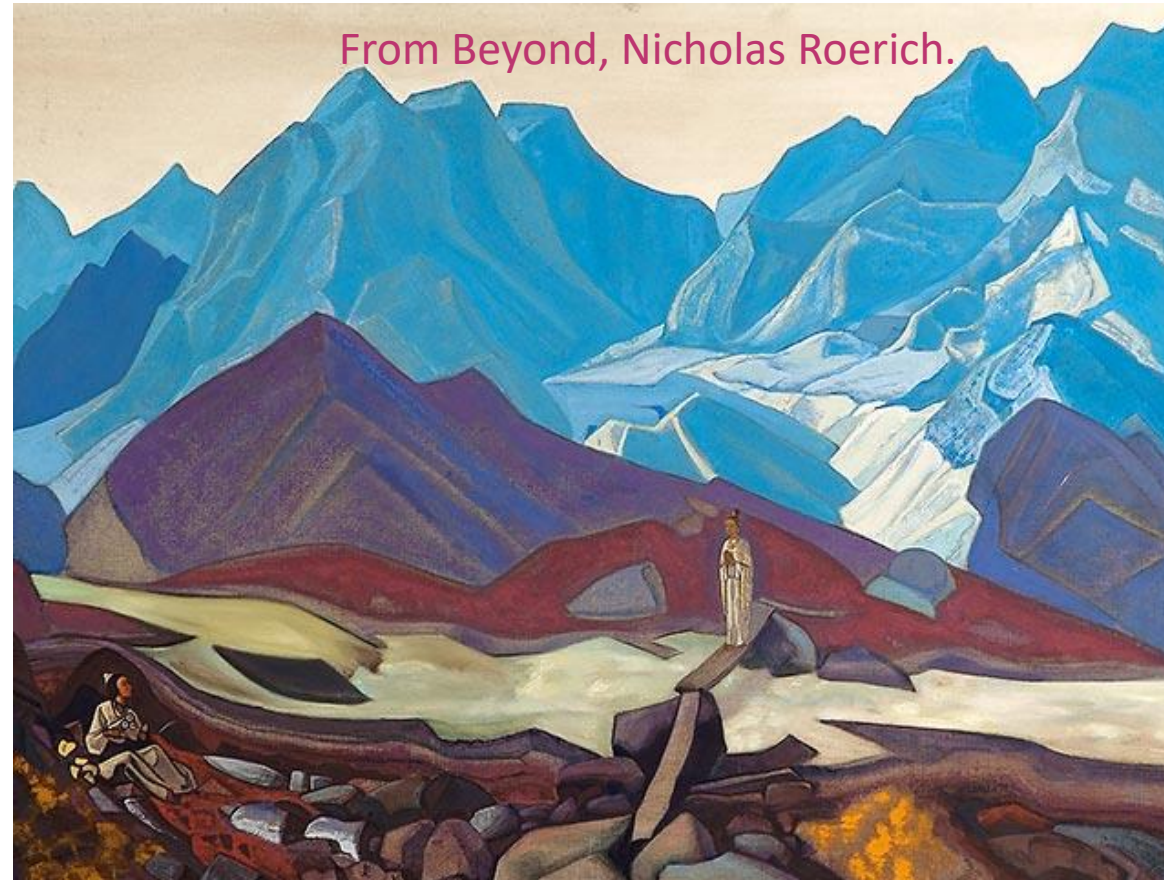
Unbounded spiritual enthusiasm; a cool, mental attitude

Born along on waves of aspiration/inspiration; plodding, step-by-step approach to living

Ray 6 Soul/Ray 5 Personality Integration

- It's the task of the Ray 6 soul to inspire the Ray 5 personality with respect for the intangible – for that which faith reveals
 - ❖ When soul controls it aspires to the heights, to achieve quality of vision, to inspire the inaccessible personality's mind who is bent on understanding/manipulating concrete things
 - ❖ Personality doubts/rejects the possibility of abstract, intangible or mystical states
 - ❖ To the personality, these are illusions; the soul aspires to soar but personality won't take flight
- The soul seeks to have the personality take a leap of faith, but the common-sense personality views this as the ultimate foolishness
 - ❖ Soul must persuade the mentally self-assured personality it doesn't know as much as it thinks, and there is more to life than the mind; it does this by presenting magnetic/inspiring ideals
- There gradually arises from deep within a vision of transcendent possibilities that can't be reached through linear, analytical mental processes
 - ❖ Longings come with the visions, resisting all rational explanation; the personality tries to hold on to rationality, resisting what it perceives as nonsense
 - ❖ But the vision proves too alluring, the ordinary life of the personality too insipid; feeling, aspiration assert themselves and overwhelm the concrete mind
 - ❖ He becomes motivated to ascend toward the ideal; the mind becomes the servant of his idealism

Integration Formulae for Rays 6 and 5: *Detached Restraint*

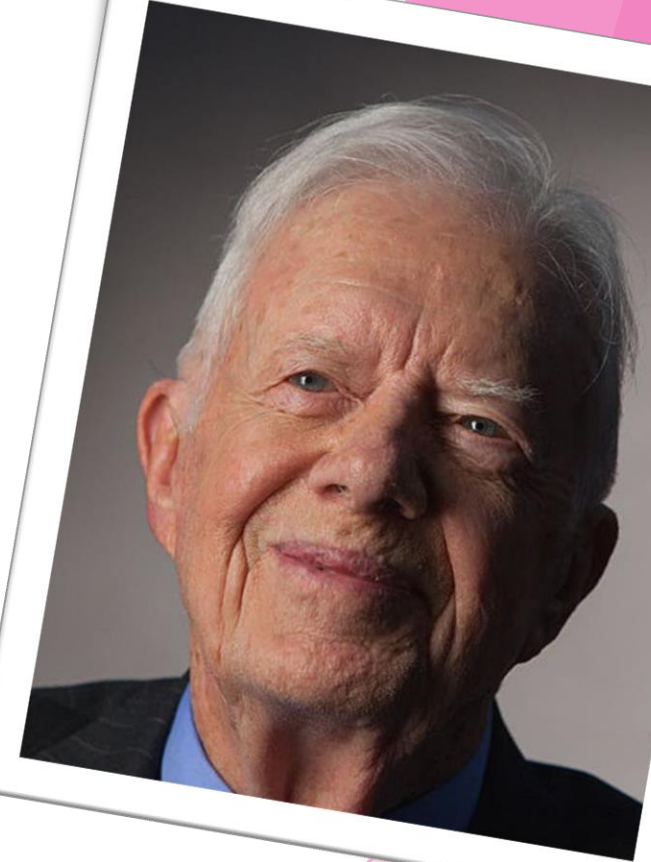


Restraint is the Ray 6 formula; *Inclusiveness* is Ray 5 formula. Composite effect for soul and personality integration is the detachment of the outer man from his exclusive concern with superficial, material phenomena—a detachment which complements the determination of the inner man to restrain himself from pursuing anything but that which is of the highest spiritual value.

Ideal Expression of a R6 Soul and R5 Personality

- Idealism and one-pointed devotion are expressed thru science and technology
 - ❖ One's personal, technological expertise is made available to fulfill one's highest dreams.
 - ❖ One accomplishes or fulfills those dreams through technical abilities.
 - ❖ Utopia is to be achieved through science, but the vision is more important than the scientific application of the vision.
 - ❖ Faith becomes more important than verification.
 - ❖ Faith masters skepticism; belief masters doubt.
 - ❖ This individual believes before he knows, but may be inclined to use his scientific abilities to prove what he already accepts on faith.
 - ❖ This is one of the theological combinations.

R6 Soul, Ray 5 Personality Examples





It's a struggle between the Ray 6 Soul's spiritual need to escape from the confines of form . . . and the Ray 7 Personality's love of form, formalism and formality.

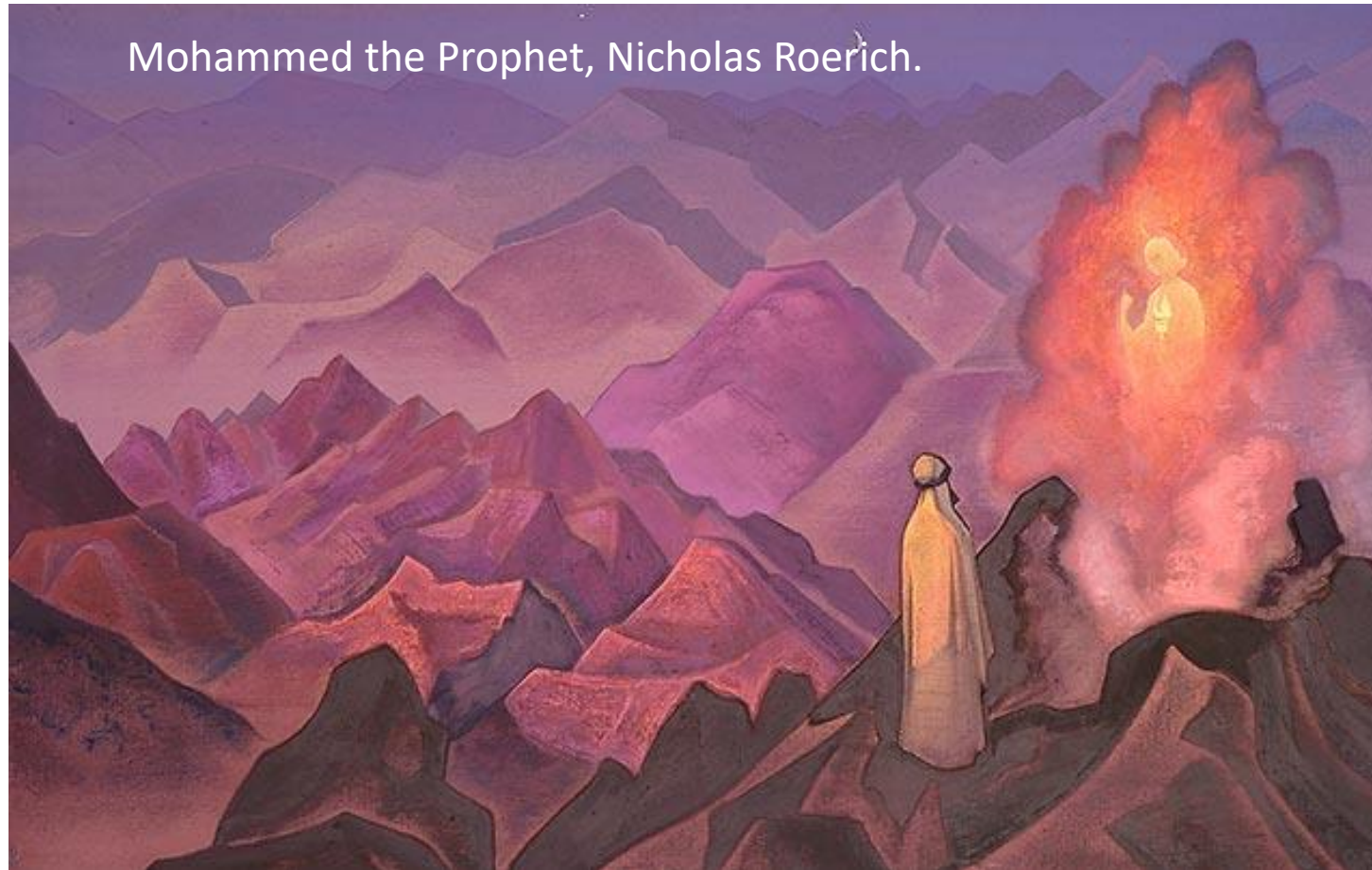


- Ardent spiritual aspiration versus over-attentiveness to the normal sphere of activity
- Ability to rise far above the concerns of the physical body; excessive consciousness of the body
- One-pointed passionate pursuit of ideals; uninspired/moderate, dislikes breaking established rhythms
- Ability to reject all but the highest ideals; encumbered by unnecessary social observations
- Easily moved by spiritual ardor; over-ritualization of life activities

Ray 6 Soul/Ray 7 Personality Integration

- It's the task of the Ray 6 soul to teach the Ray 7 personality to detach from the physical form and ascend into formless and abstract realms
 - ❖ Soul soars to heights/seek to attach to states of awareness with on outlines in 3 lower worlds
 - ❖ Personality loves form, the more tangible the better; it wants patterned behavior, becoming preoccupied with maintaining those things (patterns, rituals, routines)
- Soul demands freedom from those patterns, hoping to demonstrate they are prisons
 - ❖ When soul influences, it can be moving, inspiring to fly towards the source of higher influences
 - ❖ But personality is confined by unvarying patterns/actions, compulsive fixation upon what to do next
 - ❖ Soul must convince personality that the stability/predictability are holding it pinned to earth and thus separated from mystical experiences within higher dimensions of consciousness
- At length, the personality will rebel against the uncertainty of the faith-inspired way of life required by the soul, and may try to become more compulsive/safe/secure
 - ❖ But this security/repetition becomes a prison, until the personality reaches a point of surrender and the attraction toward a transcendent/mystical vision becomes irresistible
 - ❖ Then, with aspirational longing, the personality reaches away from its earthly anchorage towards the higher, formless, abstract dimensions of consciousness.

Integration Formulae for Rays 6 and 7: *Oriented Restraint*

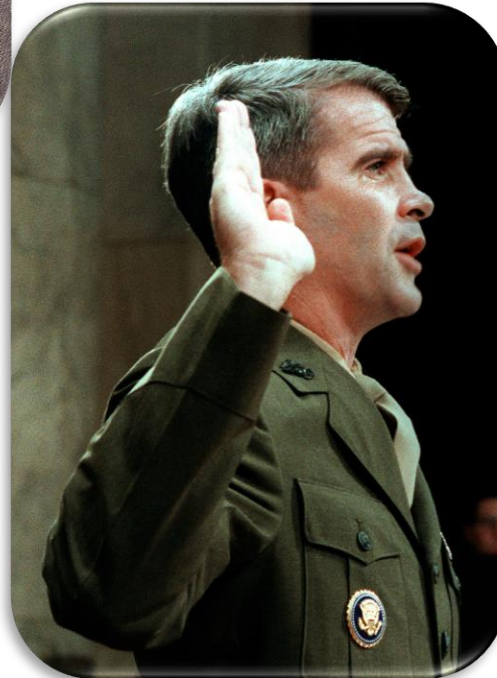
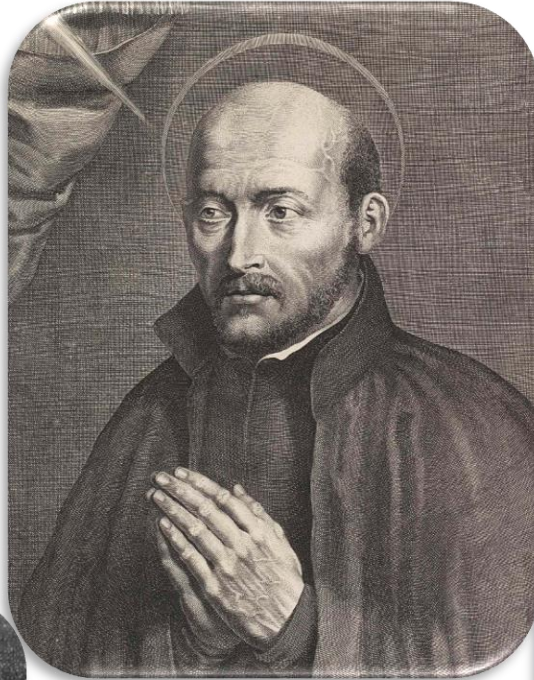


Restraint is the Ray 6 formula; *Inclusiveness* is Ray 7 formula. Composite effect for soul and personality integration is the outer man's orientation to the inner Light which complements the determination of the inner man to restrain himself from pursuing anything but that which is of the highest spiritual value

Ideal Expression of a R6 Soul and R7 Personality

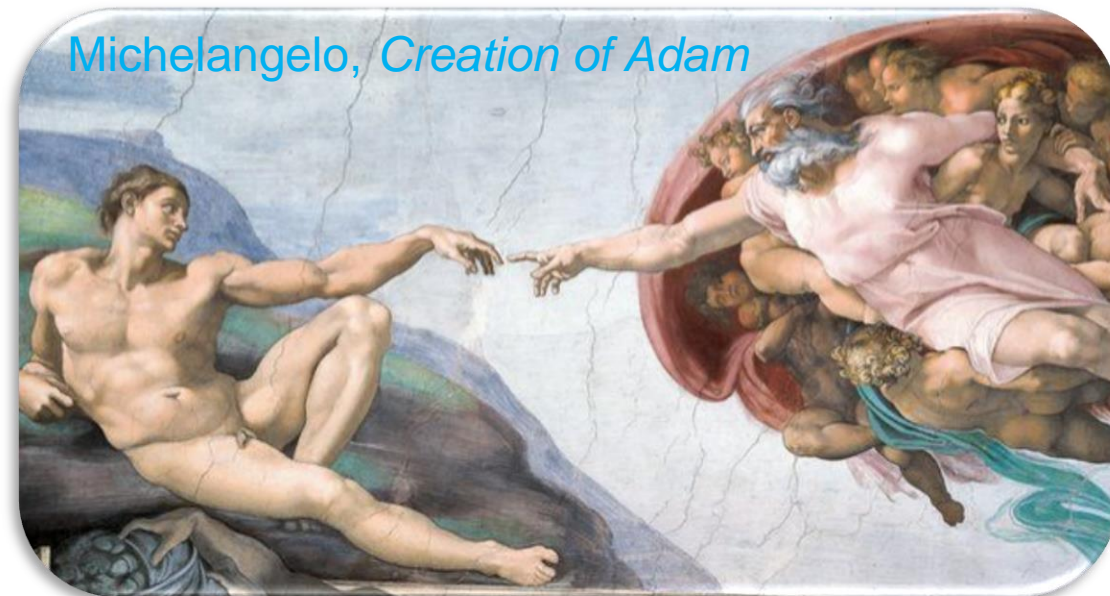
- Idealism and one-pointed devotion are expressed practically, thru organizations
 - ❖ Ideals are perfectly manifested. Idealism (the spirit of the thing) masters materialism.
 - ❖ The love of abstract perfection becomes more important than any concrete expression of that perfection, but the ability to express the abstract ideal is pronounced.
 - ❖ Administrative and managerial abilities serve the complete actualization of the causes to which one is passionately devoted.
 - ❖ A fine sense of form and organization ground and precipitate ideals which might otherwise tend to remain abstract.

Ray 6 Soul, Ray 7 Personality Examples





Leonardo Da Vinci, *The Last Supper*



Michelangelo, *Creation of Adam*



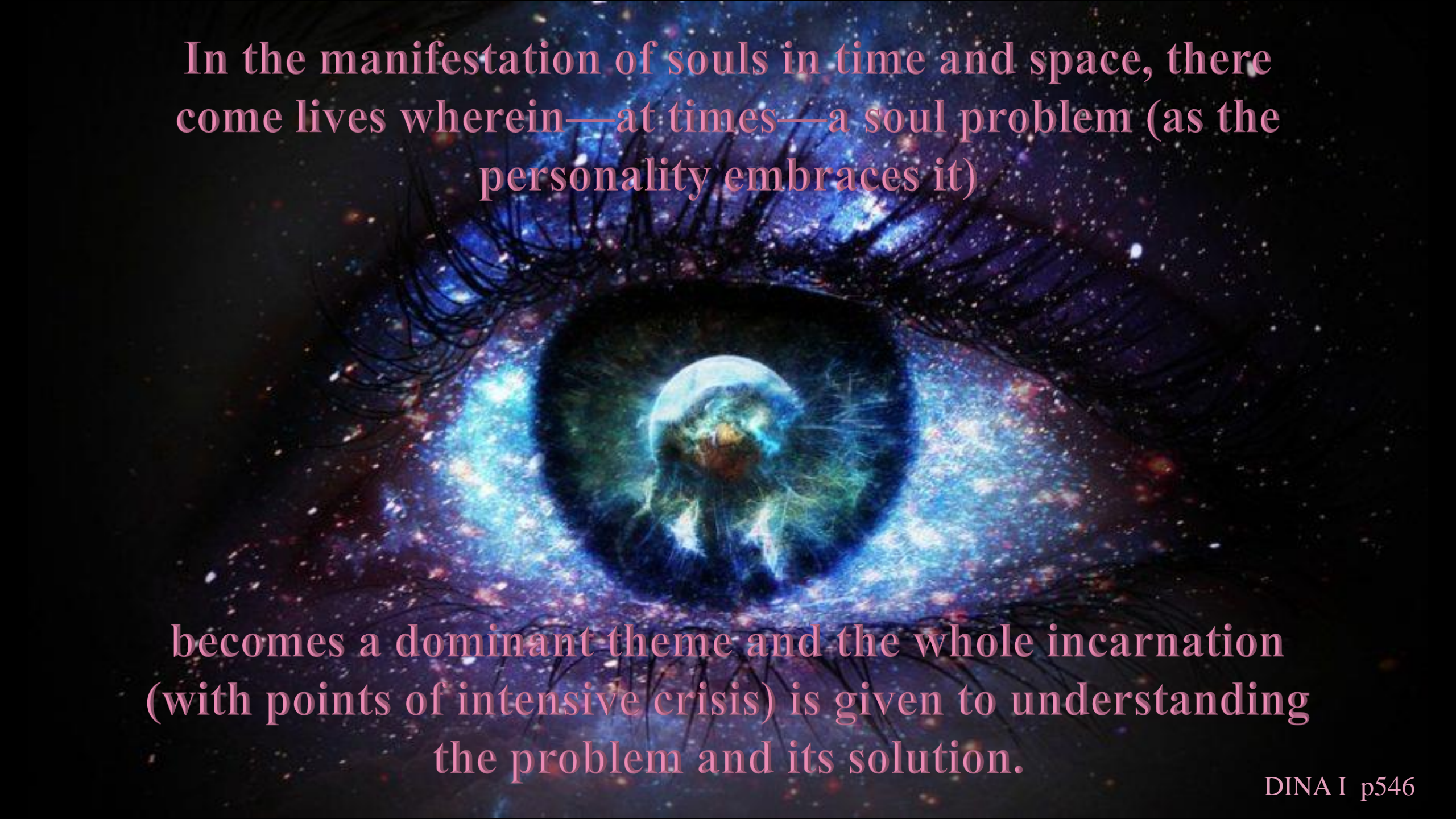
Giulio Clovio, *Crucifixion*



Sandro Botticelli, *Madonna with Lilies and Eight Angels*



Raphael, *The School of Athens*

A large, glowing eye with a galaxy as its iris, set against a starry night sky. The eye is the central focus, with its iris being a vibrant, multi-colored galaxy. The surrounding space is filled with stars and nebulae, creating a cosmic atmosphere. The text is overlaid on this image in a pink, serif font.

In the manifestation of souls in time and space, there come lives wherein—at times—a soul problem (as the personality embraces it)

becomes a dominant theme and the whole incarnation (with points of intensive crisis) is given to understanding the problem and its solution.